

Montgomery County Early Learning Center FAQ



When will the Center open?

Plans are to open the Center in the Spring of 2024. Construction of the new facility is expected to begin in the Spring of 2023. This timeline is an estimate and subject to many variables.

Who will operate the facility?

The Montgomery County Community Foundation will own the facility and we will partner with a high-quality provider to operate the facility. An advisory board, made up of representatives of the key funders, will provide strategic oversight and direction for the facility.

How is this being funded?

The estimated cost to build the facility is \$3.7 million. Nearly \$3 million has been pledged from businesses and individuals; additional funding is still needed.

How can I contribute and become a partner?

Donations can be made through the Montgomery County Community Foundation at PO Box 334, Crawfordsville or visit www.mccf-in.org to donate online and choose the Montgomery County Early Learning Center Fund. To learn more, contact Kelly Taylor at MCCF, 765-362-1267 or kelly@mccf-in.org

Where can I get updates?

More detailed information and updates about the proposed Early Learning Center can be found at www.mccf-in.org, and our social media pages on Facebook, Twitter, and Instagram.

How many children will the Center accommodate?

The new facility will provide approximately 125 child care seats.

What ages of children?

The new facility will provide for infants through age five.

Where is the facility located?

The site of the new facility is 110 W. South Boulevard in the former County building.

For more information on this project, please contact:
Kelly Taylor, Montgomery County Community Foundation
kelly@mccf-in.org - 765-362-1267

The Case for Early Childhood Education in Montgomery County



In 2019 the Montgomery County Community Foundation partnered with the City of Crawfordsville to conduct a community-wide needs assessment to understand the needs around early childhood education and child care.

A task force was formed comprised of individuals representing local government, employers, providers, parents, schools and nonprofit organizations to address this concern.

We found that Montgomery County is considered a child care desert for child care seats, with only 6.5% of our children under the age of five enrolled in recognized high-quality programs.

From the data collected, the task force developed a five-year strategic plan to address specific areas of need. An Early Childhood Coalition launched in 2020 and provides a comprehensive and coordinated network of services to enhance outcomes for children, families, employers and providers.


The strategic plan identifies five key goal areas:

- Increase Community and Parent Education
- Improve Accessibility
- Increase Program Quality
- Improve Affordability
- Strengthen Program Supports

A key goal of our strategic plan was to employ an Early Learning Director to lead this initiative. In June 2021, Lisa Walter was hired for this position.

While much time and effort has been spent on the key initiatives to increase program quality and strengthen program supports, we have identified that Montgomery County lacks high-quality seats especially for infants and toddlers.

This impacts our community greatly as parents have few options for care and the lack of seats ultimately affects employers as working parents are unable to secure high-quality, affordable care.



We have a unique opportunity to partner with businesses, government and individuals to design and build a high-quality early learning center for Montgomery County families and provide an additional 125 seats for our community.

For more information on this project, please contact:
Kelly Taylor, Montgomery County Community Foundation
kelly@mccf-in.org - 765-362-1267

The Need

Child care is an economic driver for rural communities and we are facing a shortage of high-quality child care in Montgomery County.

	Children under 6 years old	Children under 6 years old in need of care	Children under 6 years old enrolled in known programs	Children under 6 years old enrolled in high-quality programs
2018	2,834	1,587 (56%)	719 (45%)	49 (3%)
2019	2,770	1,845 (67%)	520 (28%)	44 (2%)*
2021		2,000		130 (6.5%)

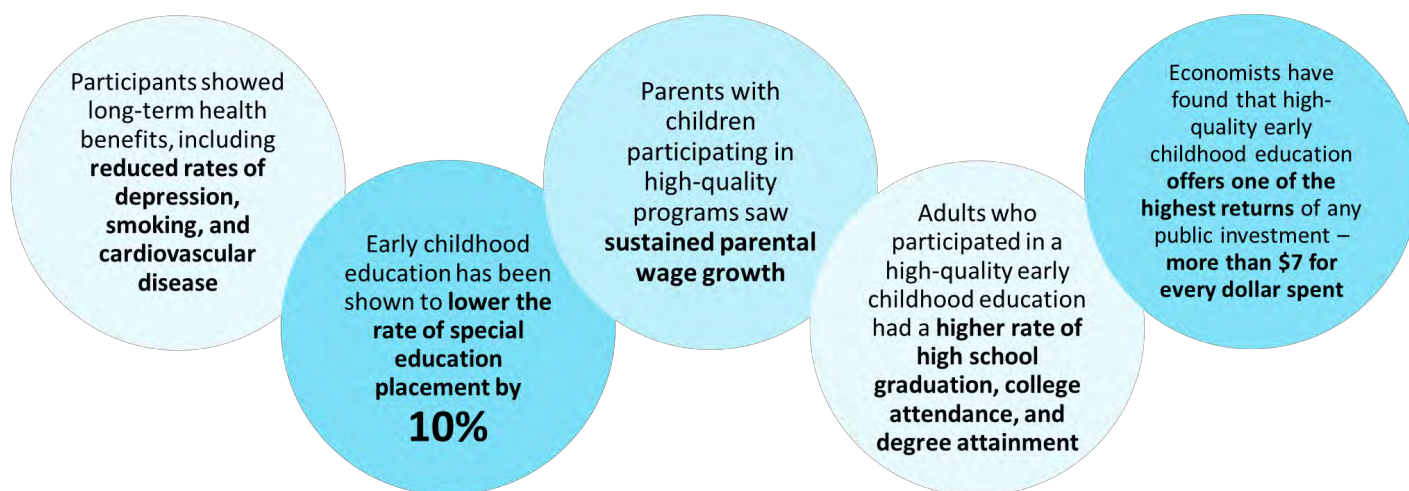
*Montgomery County is ranked 81st out of 92 counties in this area

Montgomery County has about **2,000 children under the age of six that need care**. With our current early childhood providers, we are able to serve **6.5%** of these children with high-quality care. Because high-quality care is a challenging business that is typically not revenue producing, **more seats and centers are not being opened**.

	Impact on Indiana Businesses	Impact on the Economy	Impact on Tax Revenue
Montgomery County	-\$7.9 million	-\$4.9 million	-\$808,000
Indiana	-\$1.8 billion	-\$1.1 billion	-\$118.8 million

Benefits of Investing in Early Childhood Education

The positive effects of early childhood interventions are evident even after participants reach adulthood



Key Takeaways:

- Partnerships must be established to create a long-term, sustainable solution for our community
- Partnerships must include government, business and nonprofits
- If we don't have safe, high-quality child care, how will we attract families to our community?

Our Plan

Now is the time to build a child care system that works.

As we began to look for opportunities to expand child care seats in our community, we wanted to focus on innovative and creative solutions. With the County moving to a new location, we became aware that the County building located on South Boulevard would be available. The Montgomery County Community Foundation met with the Commissioners to discuss the building being adapted for a child care facility and they were unanimously in favor of pursuing this opportunity.

In February 2022, the Montgomery County Community Foundation engaged Halstead Architects to conduct a feasibility study of the South Boulevard building to determine its fit for a child care center. As the building and need for child care was analyzed, the feasibility study included renovation of the existing 6,670 SF and a new addition of 8000 SF to provide 125 child care seats for infant through school-age children. The estimated cost to build this facility is \$3.7 million.

The Montgomery County Community Foundation, the Montgomery County Commissioners and the City of Crawfordsville are seeking additional partnerships to build the high-quality early learning center for our community.

The Montgomery County Community Foundation will own the facility and we will partner with a high-quality provider to operate the facility. An advisory board, made up of representatives of the key funders, will provide strategic oversight and direction for the facility.



Partnership Benefits

- Priority seating, which means your employees receive priority in classroom openings.
- The opportunity to purchase seats and hold them for your employees.
- A seat on the advisory board

Employer Recruitment Advantage

- Offering a child care benefit to your employees that is not available through other employers in Montgomery County.
- Assistance for your company and employees with establishing dependent care accounts* to help with the cost of child care.

**Dependent care accounts allow employees to fund their child care expenses with pretax dollars. Employees may contribute up to \$5,000 for the plan year.*

Community Benefits

- Parents can work or go back to school
- Children will be ready for school
- Children will be in a safe and educational environment
- Healthier families
- Strong future workforce

The Results

- An engaged, productive workforce with access to high-quality child care.
- A model for other rural communities.
- A transformational project for our community, children and businesses!

