

Special Education includes specially designed instruction to meet the child's unique educational needs and related services to support the child's educational services, all provided at no cost to the parent.

Examples of special education and related services include:

- **Extra assistance, accommodations or adaptations for the child in the classroom**
- **Extra assistance or instruction in a special classroom**
- **Speech Therapy**
- **Occupational Therapy**
- **Physical Therapy**

If you have any questions or need more information, contact your child's teacher, school counselor, or building administrator.



For further information, please contact us at :

East Central Indiana Special Services

107 South Layman Street, Suite A

Liberty, Indiana 47353

(765) 458-0263

1-888-219-0004

A Guide to Accessing Special Education Services

East Central Indiana Special Services



Member Corporations:

- **Franklin County Community School Corporation**
- **Union County/College Corner Joint School District**
- **Western Wayne Schools**
- **Northeastern Wayne Schools**

Referral Process

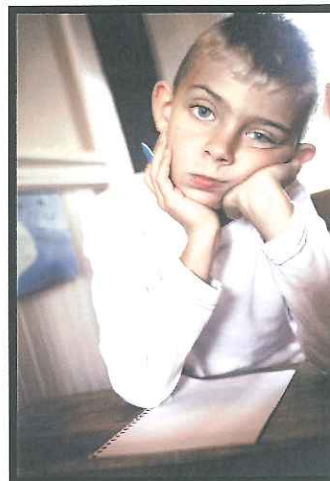
“How do I get my child tested?”

- You need to notify your child’s teacher, school counselor, or building administrator that you’d like your child tested for special education services.
- School personnel will discuss your concerns with you and will review all applicable educational data for your child.
- If testing for special education services is determined to be an appropriate next step for your child, you will be asked to provide written consent before the school can begin the evaluation process.
- Once you provide written consent for testing, the school must evaluate your child and hold a case conference committee meeting within 50 school days.

Testing Process

“What happens next, and what kind of testing will be done?”

- Testing will be done by school personnel, and may look at your child’s hearing, vision, general intelligence, academic achievement skills, communication skills, fine and gross motor skills, and social/behavior skills.
- You will be asked to provide information about your child as part of the evaluation process.



Case Conference Committee Process

“What happens after the testing is done?”

- The case conference committee, made up of you and school personnel, will meet to talk about the evaluation results and to determine if your child has a disability.
- If your child has a disability, the case conference committee will identify your child’s educational needs and develop an individualized education program (IEP) of the types of services your child will receive.

