

Indiana Rural Health Association
2018 Election of Officers and Board Members

Please vote by checking the appropriate boxes and signing and dating the ballot. There is only one person running for each of the open officer positions. The President-elect must be a current or former member of the Board. The Treasurer and Secretary are chosen from the members. Please vote for each officer nominee and vote for up to four (4) of the Board of Director nominees. Election results will be announced at the General Membership meeting on Tuesday, June 26, at 5:00 p.m.

Voting on smart devices will occur at the Annual Conference and is preferred.

Please Print Your Name Here

Signature

Date

The Board encourages its members to seek out nominees before voting and ask them why they are seeking election and what they hope to accomplish in their term.

Indiana Rural Health Association - 2018 Official Ballot

Please see voting instructions on cover sheet.

Please vote for each office. If elected, each officer will serve a one-year term.

Officer Nominees:

President-Elect

___ MARK VONDERHEIT (current IRHA Board member seeking President-Elect position)

Secretary

___ TARA HATFIELD, RN, BSN, MHA (current IRHA Board member seeking Secretary position)

Treasurer

___ TRAVIS CLAPP, ACHE (current IRHA Board member seeking Treasurer position)

Board of Directors Nominees

Please cast up to **FOUR** votes from among the nominees listed below.

The elected Board members will serve a three-(3) year term.

___ MEREDITH ADDISON, RN, MSN, CEN, FAEN (current IRHA Board member seeking second full term)

___ BAILI CAMPBELL, DNP, RN (current IRHA member seeking first full term)

___ TRISH DEVINE, PharmD, RPh (current IRHA Treasurer and Board member seeking second full term)

___ CHRISTOPHER KERN, MBA (current IRHA member seeking first full term)

___ TARA WILLIAMS, RN, MSN (current IRHA member seeking first full term)

Indiana Rural Health Association Officer Nominees 2018

President-Elect

MARK VONDERHEIT (current IRHA Board member seeking President-Elect position)

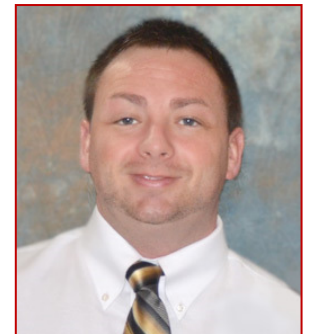
is Director, Provider Services for Managed Health Services. He has been a member of the Indiana Rural Health Association for four years and has enjoyed serving on the IRHA Board of Directors during his first 3-year term. Vonderheit has attended many of the educational programs offered through the Public Policy Forums, Spring Into Quality Symposiums, Annual Conferences, Fall Forums, and Leadership Seminars. He has also attended some Lunch and Learn programs and enjoy supporting IRHA's telehealth program. Additionally, he has had the pleasure of serving on the Board of Directors for WhiteBark and witnessing the current activities' success. Previously, thorough his work experiences with MHS, Anthem, IPHCA, and the Office of Medicaid Policy and Planning, he has been introduced to rural health issues in our state. It has brought to him the attention needed in rural counties with regard to behavioral health, dental, and overall access to primary care services. He was able to promote telehealth services as he worked with several FQHCs by providing funding to the centers. He stated that it has been a pleasure serving on the Board for IRHA. The dedication and commitment of the staff to the concerns affecting rural health are the drivers of its success. The health and welfare of rural and urban residents have a great impact on the health and economic viability of our state. IRHA is keenly aware of these issues and is proactive to addressing these concerns. Examples include the opioid crisis, increasing health access, and offering various forums for education and collaboration.



Treasurer

TRAVIS CLAPP, ACHE (current IRHA Board member seeking Treasurer position),

is the Director of Community Relations for Rehabilitation & Performance Institute (RPI). He has been a member of the IRHA since 2012 and has served on the Annual Conference planning committee since 2013 and served as co-chair the past 2 years. He has also served as a Board member since 2014. Clapp was born and raised in southeastern Indiana in a little farming town in Clark County called Marysville. He developed a passion for healthcare early in life as an athlete who was a frequent flyer in the ER, Ortho office, and Physical Therapy clinic. He received his college education from the University of Evansville. After graduation, Clapp began his career with a company who managed Physical and Occupational therapy for hospitals across the nation, particularly in rural communities. This allowed him the opportunity to get to see the various problems facing rural patients in varying states, but he quickly came to the realization that the problems that people in rural Indiana face are the same problems that people experience in rural areas all across the country. In his current role, he works for a Physical Therapy organization, which serves patients in rural communities in Kentucky, Indiana, and Illinois. Clapp lives, works, and plays in rural America and brings a first-hand experience for what it is like to truly grow up and live in a rural community. He understands the struggles that people living in rural areas face. He speaks with patients every day in the clinic to continue to understand what we can do as healthcare providers to provide exceptional care to those we serve and understand the struggles that those outside the healthcare world face. Clapp currently resides on his farm with his wife, 4-year-old daughter and 1-year-old son. They care for their dogs, cats, horses, cattle, and chickens. He wants to ensure that his children have the opportunity to be raised in rural America but still receive quality healthcare. He would love to continue his work with the IRHA, wants to continue to improve the lives of those people living in rural America, and continue to improve the delivery of healthcare to those living in the rural areas. After all, those are his family and friends.



Secretary

TARA HATFIELD, RN, BSN, MHA (current IRHA Board member seeking Secretary

position), is Managing Advisor/Practice Transformation Clinical Lead for Purdue Healthcare Advisors. She has been a member of Indiana Rural Health Association for five years and has been a member of the Board of Directors for the past three years, serving on the Annual Conference and Membership Committees for one year. She has worked as an RN in rural Indiana her entire nursing career beginning in 2004 in Jackson, Scott, Jennings, and Bartholomew counties. She has provided quality reporting assistance to many rural counties, particularly those in southern Indiana. Her focus outside of her clinical experience has been both with urban and rural counties, but the majority of her experiences has been in the rural setting. Hatfield has enjoyed the experiences of being a Board member for the last three years and have made valuable connections with and through IRHA staff and membership. I have been given the opportunity to live anywhere in the state, and yet I choose to stay in rural Indiana. Therefore, rural issues, rural health issues, and policies that affect healthcare where I live is important to me. I want the rural communities in our state to be viable options for workforce development and community growth.

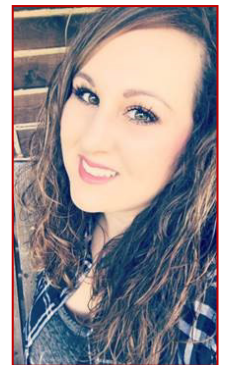


Board of Directors Nominees

MEREDITH ADDISON, RN, MSN, CEN, FAEN (current IRHA Board member seeking second full term), is an Emergency Department staff nurse at Regional Hospital in Terre Haute, a clinical instructor at Indiana State University School of Nursing, a Board member of the Indiana Rural Health Association, and a volunteer with Indiana State Council Emergency Nurses Association. She has been a member of IRHA since 2005, much more actively since 2008, and has brought the Indiana State Council of the Emergency Nurses Association booth to the IRHA Annual Conference since that time both organizations (IRHA and ENA) have flourished and remained in closer and closer connection. Addison was both at Community Hospital in downtown Indianapolis, where her papa worked as a dock laborer for Eli Lilly and Company. When he decided to move his six-person family out of the downtown Indianapolis area, the family ended up living on a Hoosier Historic Farmstead belonging to Albert Buisking of Gem, Indiana; and she has been RURAL ever since! Her papa was raised on a farm in Farmersburg, Indiana; and his Hoosier Roots run very deep, despite the fact that his papa was well educated with fluent Greek and Latin. Addison believes that we, at the literal grassroots level, can personally see the needs, which have been written up at the local to global level throughout all of the most prestigious universities and colleges statewide and worldwide. We are personally and intimately involved with the investments in human capital, which result in global improvements. If we could only make closer and more consistent connections and communication, everyone would be amazed at the changes for the better, which leave the status quo behind. Addison is a lifetime member of the Emergency Nurses Association, a Member of the Indiana State and American Nurses Association, Sigma Theta Tau Global Honor Society of Nurses and Volunteer.



BAILI CAMPBELL, DNP, RN (current IRHA member seeking first full term), is an OB, Med-Surge, Infusion, and House Supervisor Nurse Manager at IU Health Paoli Hospital. She has been a member of the IRHA for four years and has participated in the Quality Committee for the Southern Region and has participated in IRHA Annual Conferences in French Lick. Campbell has been involved in rural health for six years, primarily through her association with IU Health Paoli Hospital. As the obstetric and medical surgical manager, she has dealt with rural health disparities and policies regularly based on IU Health Paoli Hospital's rural access location. Campbell would love to serve on the IRHA Board as an obstetric representative to ensure critical access healthcare remains a priority, particularly with maternal and fetal care. There is a huge gap currently with access to healthcare in Orange and Crawford counties, and a strong voice is needed to represent our disparities. I would love to represent our Southern region as a patient advocate to help reduce infant mortality and to put emphasis on maternal and newborn care.



TRISH DEVINE, PharmD, RPh (current IRHA Treasurer and Board member seeking second full term), is Associate Professor and Director of Campus-based Experiential Education at Butler University. She has been a Board member of the Indiana Rural Health Association for six years and has been an Executive Board member and served on the Membership Committee for four years. She was also on the Strategic Planning Task Force in 2016. Devine has attended most IRHA's Annual Conferences, Fall Forums, Spring Into Quality Symposiums, and Leadership Seminars for the past five years. She was a speaker at the 2016 Annual Conference. She is a co-founder and actively involved in the Indianapolis IRHA student chapter. Devine grew up in a farming community of 2,200 and worked in a rural pharmacy from the age of nine years old through college. She serves on the Hendricks County Medical Reserve Corps. She currently works at Butler University and brings the focus of rural health policy to the pharmacy and physician assistant students. She feels she can make a difference by bringing rural health concerns to Indiana's elected officials, and one voice through advocacy can make a difference in rural healthcare. Devine would like to serve on the IRHA Board to continue to enhance her knowledge in rural healthcare, to bring her pharmacy expertise to the organization, and facilitate student involvement. Health wellness and education are key to improving Indiana's health statistics. She would like to help IRHA increase student involvement in advocating healthy lifestyles and the health of rural communities; and, in return, IRHA is helping develop our future healthcare leaders.



CHRISTOPHER KERN, MBA (current IRHA member seeking first full term), has been Director of Managed Care at Kindred Healthcare for 1 ½ years. He has been a member of Indiana Rural Health Association for one year and attended the 2018 IRHA Public Policy Forum. Kern has been involved in rural health for about 20 years, primarily via provider and through health plan experience as Director of Provider Relations and Director of Network Development. Kern has experience in provider network development, telemedicine promotion and advocacy, post-acute care provider marketing, claims education/resolution, and provider billing in addition to determining eligibility for food stamps, Medicaid, and TANF. He has been a foster parent for five years. Kern feels he can bring a well-rounded (education and business) healthcare experience to the table. He has an interest in furthering the use of telemedicine to connect rural residents via primary care offices to a variety of quality specialty healthcare providers. He is also knowledgeable and an advocate for the availability and connection of acute care provider (i.e. SNF, LTAC, HHA, and Hospice) to rural populations statewide in Indiana.



TARA WILLIAMS, RN, MSN (current IRHA member seeking first full term), has been Director of Ancillary and Support Services at IU Health Bedford Hospital since 2015 and was Director of Information Systems from 2010 to 2015. Through IU Health Bedford Hospital's organizational membership as a Critical Access Hospital (CAH), Williams has been a member of Indiana Rural Health Association for 18 years. Her taskforce and activities of participation include telehealth (including information management) 2009-2018, CAH-Flex 2005-2018, and Quality 2005-2018. She has been involved in rural health experiences for 18 years through IU Health Bedford Hospital. Previously, Williams served IU Health Bedford Hospital in the following capacities: Clinical Informatics 2009 to 2010; Quality and Compliance 2005 to 2009; Registered Nurse 1999 to 2005; and direct experience in interpretation of The JC, ISDH, and CMS standards for operations in a CAH. She also served on the IHA Information Management Council. Williams states that Indiana is far from first place in many areas surrounding health and well-being. A few areas for great focus and improvement are drug overdose prevention, tobacco cessation, obesity, and infant mortality. In rural communities, all of the above-mentioned areas are of great concern. However, we must not also lose focus on access to care and chronic disease management. Without access to care, all of the items mentioned will not see marked improvement.

