

THE BRIEF

CONNECTING PEOPLE WHO CARE
WITH CAUSES THAT MATTER

MAY 2025 NEWSLETTER

IMPORTANT DATES

YOUTH SERVING
PROGRAMS GRANT
APPLICATION
DEADLINE
May 2, 2025 by 4pm

COLOR THE COUNTY
MURAL SUBMISSIONS
DEADLINE
May 28, 2025

RENEWAL
SCHOLARSHIPS
APPLICATION
DEADLINE
May 31, 2025

UNRESTRICTED
COMMUNITY NEEDS
GRANT APPLICATION
OPENS
July 11, 2025

UNRESTRICTED
COMMUNITY NEEDS
GRANT APPLICATION
DEADLINE
Aug 1, 2025 by 4pm

Email malloryc@jccf.org
to join our e-newsletter
list.



*Mural
Submissions
Due by May
28th*

COMMUNITY AT
HEART

Because at the core of everything we do,
it's the **love for this community that unites us all.**



Whiteland Tornado Disaster Relief Fund Marks Two Years of Community Support

Next month marks the second anniversary of the devastating tornado that struck Whiteland, leaving destruction in its wake. As the community began to recover from the damage, a sense of unity and resilience emerged. Local residents, eager to help their neighbors rebuild their lives, came together to support those affected by the disaster. The Johnson County Community Foundation (JCCF) stepped up to organize the Whiteland Tornado Disaster Relief Fund, providing vital resources to help residents restore their homes and recover from the trauma caused by the storm.

The fund was designed to address a variety of needs, offering both immediate assistance and long-term support. Thanks to the generosity of donors and the tireless work of community volunteers, the fund was able to assist residents with several crucial aspects of the recovery process.

Partnering with MIBOR

The Southside MIBOR organization held their 2024 Spring Into Action day of service, during which they provided free landscaping to seven homes that were heavily impacted by the 2023 tornadoes. As a result, the Johnson County Long Term Recovery Group stepped in to offer Lowe's gift cards to eight additional homes that the Spring Into Action project was unable to reach on their service day.

Preparing for the Future: Generators for Whiteland

Looking beyond the immediate recovery needs, the Johnson County Long Term Recovery Group also recognized the importance of preparing for future disasters. Part of the Whiteland Tornado Disaster Relief Fund was used to purchase generators for the town of Whiteland, ensuring that the community would be better equipped to respond to future tornadoes or other emergencies. These generators are a crucial resource, providing power to critical infrastructure in the event of power outages caused by severe storms.

A Lasting Impact

As the second anniversary of the tornado approaches, the Whiteland community has made significant strides in its recovery, thanks in large part to the outpouring of support from local residents and donors. The JCCF's Whiteland Tornado Disaster Relief Fund has played a pivotal role in helping residents rebuild their homes, their lives, and their sense of community. While the memory of that fateful day remains, the strength and unity demonstrated by the people of Whiteland serves as a reminder of the power of coming together in times of crisis.

WHAT THE TORNADO DISASTER RELIEF FUND HELPED WITH:

- ▶ **Roof Repair:** One of the most common needs after a tornado is the repair of damaged roofs. The relief fund provided financial assistance for roof repairs, helping families ensure their homes were safe and secure.
- ▶ **Landscaping Assistance:** Tornadoes often uproot trees and leave yards and landscapes in disarray. The fund provided resources for landscaping assistance, allowing homeowners to restore their property's curb appeal and functionality.
- ▶ **Fence Repair:** Many residents experienced damage to fences, which are crucial for both safety and privacy. The relief fund helped cover the cost of repairing or replacing damaged fences, helping families reclaim their outdoor spaces.
- ▶ **External and Internal Home Damages:** From shattered windows to destroyed walls, tornadoes cause significant structural damage. The fund supported the repair of both external and internal damage to homes, allowing residents to make their houses livable again.
- ▶ **Moving Costs and Storage Assistance:** For many residents, the tornado forced them to temporarily relocate while their homes were being repaired. The relief fund assisted with moving costs and storage fees, alleviating the burden of displacement during the rebuilding process.
- ▶ **FEMA Assistance:** In addition to the resources provided by the relief fund, the JCCF also helped residents navigate the complex process of applying for FEMA assistance, ensuring they had access to the full range of federal aid available.

▶ RESERVE YOUR SPOT NOW! ◀

GOLF OUTING

JCCF'S 5TH ANNUAL GOLF OUTING

FOR MORE INFO, PLEASE CONTACT STEPHANIE MARTEN AT STEPHANIEW@JCCF.ORG

SEPT 25, 2025
@ HILLVIEW COUNTRY CLUB





Kim Kasting
President & CEO of JCCF

I am both humbled and deeply grateful to announce a monumental milestone for the Johnson County Community Foundation. Thanks to the incredible generosity of James (Jim) Kocher, we have received the largest living donor contribution in our history—an extraordinary gift of over \$1 million before he passed away on March 20, 2025. This remarkable donation established the James R. Kocher and Evelyn J. Kocher Fund, an endowment fund dedicated to supporting seniors, addressing food insecurity, and assisting veterans' organizations.

This transformative gift will have a profound impact on our community. Together, we can build a stronger, more resilient community, and we are incredibly thankful to Jim Kocher for his enduring dedication to making that vision a reality.

If you'd like to explore ways to give back to your community, please give us a call. We are happy to help you on your planned giving journey.

Color The County Mural Program Call For Entries!

We are looking for local artists, emerging artists, art students and creative community members interested in submitting mural designs for this year's program. No previous experience is necessary! ***This year's mural will be painted on Taxman Brewery in Bargersville.***

JCCF is seeking ***one mural design and will award \$3500 for the winning design***, along with mural materials and the instruction needed to prepare for an outdoor mural installation. Selected winner will be responsible for coordinating efforts with the Foundation to complete the community mural in summer of 2025. This includes, but is not limited to, mural prep work leading to the community painting day then mural touch-ups and completion afterwards.

Design Criteria

Design Content: Successful designs are bright, colorful and appealing to both pedestrians and viewers in vehicles. To be classified as artwork and to avoid inadvertently violating signage ordinances, design should not include logos, phrases or branding for any business, product, good, activity, service or private interest. Since location is public and visible to viewers of all ages, ethnicities and cultural backgrounds, designs must not include nudity, suggestive poses, hate speech or imagery that any group might find obscene, offensive or morally shocking. Political, religious or memorial artwork is also unacceptable.

Entry Fee: No entry fee is required. If you wish to make a donation to JCCF's Color the County Fund, we appreciate all contributions.

Entrant Information: Each entry must be accompanied by a separate entry form available at www.jccf.org/mural-program/.

Submission Location: You may hand deliver, mail or email your submission(s).

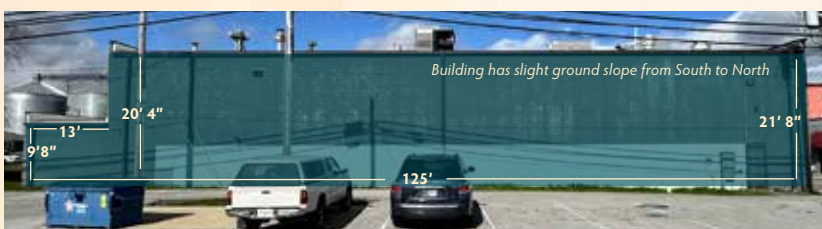
- ▶ Hard copies must be hand delivered or mailed to: *Attention: Mural Design
Johnson County Community Foundation
398 South Main St. / P.O. Box 217
Franklin, IN 46131*
- ▶ Digital copies must be sent to Joe Morris: joem@jccf.org

Design Selection

The Judging Panel is composed of volunteer community members and JCCF partners. Panelists will review the entries and select the finalists based on the following considerations:

- ▶ Artistic quality and strength of concept
- ▶ Contemporary relevance and appropriateness for our time
- ▶ Architectural, geographical, socio-cultural and historical context
- ▶ Originality and uniqueness
- ▶ Suitability to the surrounding neighborhood

Submission Details | Deadline: No later than 4:00 p.m. on **Wednesday, May 28, 2025**



MORE DETAILS

STAFF

Kim Kasting | kimm@jccf.org
President & CEO

Stephanie Marten | stephaniew@jccf.org
VP of Development

Sharon Barnard | sharonb@jccf.org
Chief Financial Officer

Stephanie Fox | stephanief@jccf.org
Director of Grants and Scholarships

Mallory Carnes | malloryc@jccf.org
Communications Manager

Joe Morris | joem@jccf.org
Executive Coordinator



CONNECTING PEOPLE WHO CARE
WITH CAUSES THAT MATTER

P.O. Box 217 | 398 South Main Street
Franklin, IN 46131

PHONE: 317-738-2213

FAX: 317-738-9113

WEB: jccf.org |    

NONPROFIT ORG
U.S. Postage
PAID
Indianapolis IN
Permit #5677

COMMUNITY PARTNERS

DIAMOND



PLATINUM



Photo Credit: imhnt.org

For more information about the Masonic Arch Preservation Fund or to learn more about the Johnson County Community Foundation, please contact Stephanie Marren, VP of Development at stephaniew@jccf.org or (317) 738-2213.

The Indiana Masonic Home arches have long been a beloved symbol in the community, and local residents are showing strong support for their preservation. The community is encouraged to contribute to this historic cause. To donate online to the Masonic Arch Preservation Fund, please visit www.jccf.org/give and select "Masonic Arch Preservation Fund." Please mail checks to the Johnson County Community Foundation at 398 S. Main Street, Franklin, Indiana. Every donation will help ensure the continued care and restoration of the arches for years to come.

The Masonic Arch Preservation Fund is officially open at the Foundation, aimed at restoring the historic arches at the Indiana Masonic Home, also known as Compass Park.

Impact Stories

FEATURED FUND: Masonic Arch Preservation Fund

BOARD OF DIRECTORS

EXECUTIVE COMMITTEE

Tom Sprague | Chair
Evan Meade | Vice Chair
Jeff Gilmer | Treasurer
Anne Young | Secretary
Dan Nicoson | Past Chair

BOARD MEMBERS

Lee Ann Abercrombie-Logan
Bryan Epperson
Wesley Klutts
Michelle Mastowski
Dana Monson
Vicki Noblitt
Nicole Otte
David Payne
Joe Paulson
Susie Qualls
Amanda Rubadue
Steve Spencer

