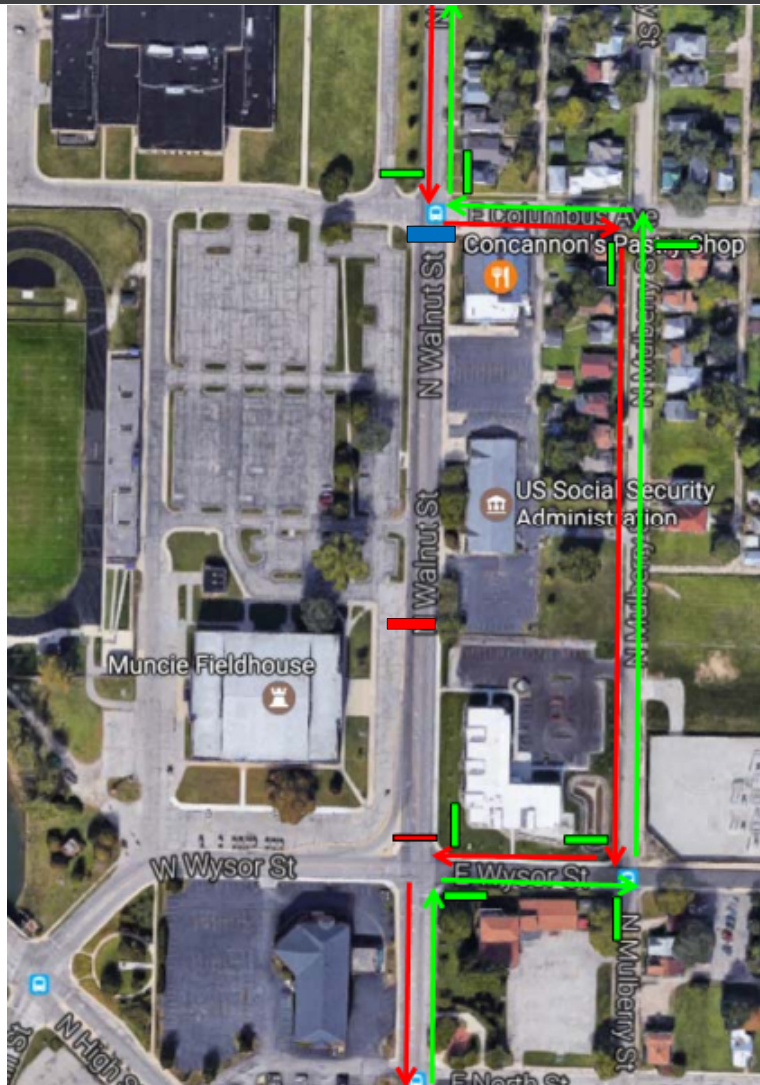


Line 1-E Traffic Control



CSO 028 AREA 1



Line:

- 1-E

Street(s) Closed:

- N Walnut St between W Wysor & E Columbus with staggered barricades for access to Businesses
- Detour as Illustrated

Duration:

- Tentatively 7 Working Days

Buses Affected:

- Yes

Note:

- Use of Sidewalk Closed Signs will be Utilized, as Required. After completion of Line 1-E final asphalt restoration will take place, requiring moving closures.

| Legend: | |
|---------------------------------|---------------|
| Detour Signage | Green arrow |
| Hard Road Closure Signage | Red bar |
| Road Closed Ahead Signage | Blue bar |
| Lane Merger Signage | Orange bar |
| Construction Barrels | Orange circle |
| Detour Route #1 | Green arrow |
| Detour Route #2 | Red arrow |
| Detour Route #3 | Blue arrow |