

# Special Education Update

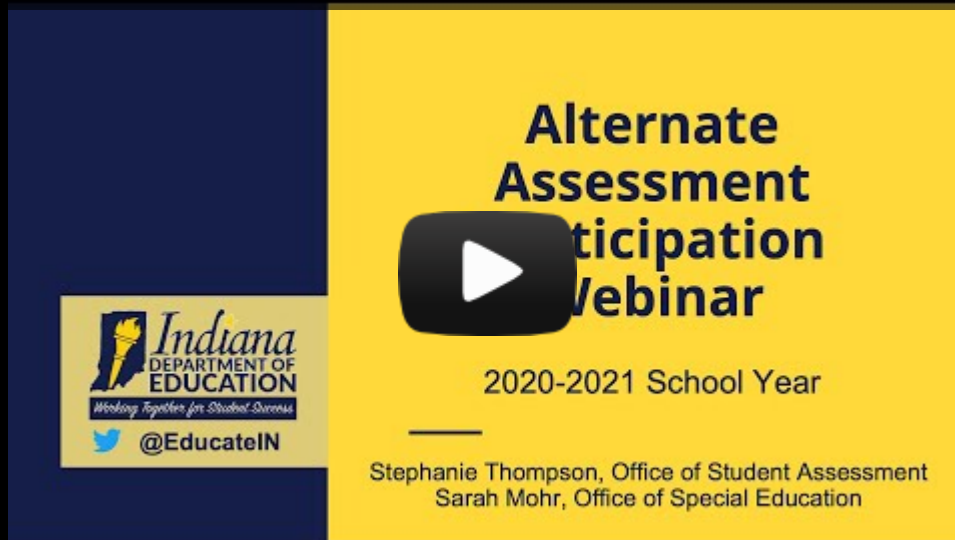
East Central Indiana Special Services.....December 15, 2020

## **REQUIRED TRAINING For ALL Special Education Teachers and Administrators Regarding the Alternate Assessment**

Please review the following three documents and video. Once you have done so, please complete the Google form so that I can document your participation in these training activities. I am in hopes that you can complete this required training before leaving for break, but please do so no later than January 8, 2021.

1. Criteria for Determining Participation in the Alternate Assessment in Lieu of the General Education Assessment Participation Guidelines <https://www.doe.in.gov/sites/default/files/assessment/indiana-participation-guidance-updated-091219.pdf>
2. Alternate Assessment Participation Decision Flowchart <https://www.doe.in.gov/sites/default/files/assessment/indiana-alternate-assessment-participation-decision-flowchart-final-3-28-18.pdf>
3. Participation Decision for Indiana's Alternate Assessment Frequently Asked Questions <https://www.doe.in.gov/sites/default/files/assessment/indiana-alternate-assessment-participation-guidance-faq-final-6-22-2020.pdf>
4. 2020-2021 Alternate Assessment Participation Webinar 2020-2021 [video](#)
- 5 Google Form to document you have completed these requirements <https://forms.gle/nwxwffjSnJF3joyd6>

## Alternate Assessment Participation Webinar 1%



### What's All the Fuss about Alternate Assessment?

There is a 1% cap on the number of students in each corporation that may participate in the alternate assessment. If a corporation exceeds the 1% cap in a given year, then that corporation is found to be out of compliance for this indicator.

Due to state assessments not occurring last spring due to COVID, the data used to make this determination for the 2019-2020 school year was based upon the number of students with the alternate assessment listed in their IEP last spring. This data is as follows:

Franklin County - ELA 1.03%, Math 1.03%, Science .97%  
Union County - ELA .86%, Math .86%, Science .36%  
Western Wayne - ELA 2.13%, Math 2.13%, Science 1.51%  
Northeastern - ELA .13 %, Math .13%. Science 0%

Based on this information, Franklin County and Western Wayne were found to be out of compliance for the 2019-2020 school year as they exceeded the 1% cap in one or more areas. As corrective action, these corporations are REQUIRED to provide professional development to staff involved in determining student placement on the alternate assessment. They are also required to provide information to the DOE no later than this Friday on whether or not they anticipate being out of compliance for the current year and, if so, provide justification for continued noncompliance with this indicator.

### Guidance Regarding Moving a Student to the Alternate Assessment

1. Avoid making this decision too early for a student. Unless there a significant reason for doing so, postpone moving a student to the alternate assessment until middle school or later.

2. Seek a reevaluation if the case conference determines there is need to consider moving a student to the alternate assessment. Use the new evaluation data when determining whether or not a student

meets the criteria for participation on the alternate assessment. A member of the school psychology team should participate in this reevaluation review meeting to provide information about the student's evaluation results.

3. In addition, invite Mort, Lisa, or Liza to participate in the case conference to guide the committee through the process for determining whether or not the student meets the criteria for the alternate assessment.

4. Make certain to follow the guidance provided by the DOE in making this determination for a student.

5. Participate in annual training regarding the alternate assessment, whether required by the DOE or not, to ensure that all staff are aware of the processes and procedures required in making this decision for a student.

## Virtual Co-Teaching Tips

<https://www.understood.org/en/school-learning/for-educators/universal-design-for-learning/co-teaching-during-distance-learning-tips-for-partnering-virtually>

## FREE Virtual Focus on Inclusion Conference - GREAT OPPORTUNITY! DON'T MISS THIS!

The Indiana IEP Resource Center is holding a free WEEK of professional learning at the virtual Focus on Inclusion Conference from February 1 – 5, 2021. Virtual sessions will be offered daily with national and state presenters sharing their expertise on the most timely topics in education. For more information and to register, visit [www.indianaieprc.org/foi2021](http://www.indianaieprc.org/foi2021). We look forward to your participation.

## Keep Breathing!

### Breath Series Episode 7 Paced Breathing



## PATINS Offers Refurbished Technology

All technology is distributed at no cost to public Indiana schools through the online application request. This service is intended to fill educational gaps for individual students based on their unique need, not to satisfy infrastructure requests for entire classrooms or buildings.

Click here to make your request: [Request Refurbished Technology](#).

### Eligibility:

Indiana public school administrators, special education directors, teachers of record, and other school personnel working with students receiving special education services are eligible to apply for refurbished technology to be used by individual students in need, in the classroom and/or home.

### Disclaimers:

A limit of **ten** requests per school, per year is our policy. Special needs above this must be approved in writing by the PATINS Project State Director, [Daniel McNulty](#).

Applications are filled on a first-come first-served basis when the appropriate equipment becomes available. Due to the large volume of requests, each request will be evaluated, and potentially filled, based on the justification provided to support Indiana public K-12 students in gaining meaningful educational access and participation.

Technology is distributed on an AS-IS basis. PATINS does not provide technical support for the technology once delivered.