

GIFTS *that keep* GIVING



**Montgomery County Community Foundation
2024 Annual Report**

Table of Contents

From the CEO	3
Grants	4-9
Early Childhood Coalition	10-11
Scholarship Story	12-13
Scholarships	14-17
New Funds	18-21
Giving Tools	22
Nonprofit Loan Program	23
MCCF Funds	24-30
Types of Funds	31
Memorial Gifts	32-39
Honor Gifts	39-40
Bequest Information	41
Women's Legacy Fund	42
Volunteer of the Year Awards	43
Financials	44
Giving to MCCF	45
MCCF Board of Directors	46
MCCF Staff	47



Dear Friends,

As we look back on this remarkable year, I am filled with gratitude as we share with you a glimpse of what has truly been a groundbreaking year for the Montgomery County Community Foundation. Together, we have achieved significant milestones, supported countless initiatives, and continued to build a future that reflects the values of generosity, leadership and serving our community.

Reflecting on Our Impact

This year, our foundation has made strides in furthering its mission of creating lasting, positive change within our community. Thanks to the unwavering support of our donors, partners, and volunteers, we were able to fund over 161 projects that have touched the lives of thousands. Whether it was expanding access to child care, improving education, supporting local arts and history, or providing essential services for those in need, the impact has been felt far and wide. We distributed a over of \$2 million in grants, supporting 74 nonprofit organizations.

A Year of Growth and Innovation

This year has also been one of transformation. We embraced new technologies, refined our programs, and explored innovative approaches to community development. Our new Montgomery County Early Learning Center is a shining example of how our community comes together to address the greatest needs by investing in early childhood education and the future of our community.

Thank You

I want to express my deepest thanks to each and every one of you. Your belief in our mission and dedication to our community has made all the difference. I am excited for what we will accomplish together in the year ahead.

A handwritten signature in black ink that reads "Kelly S. Taylor".

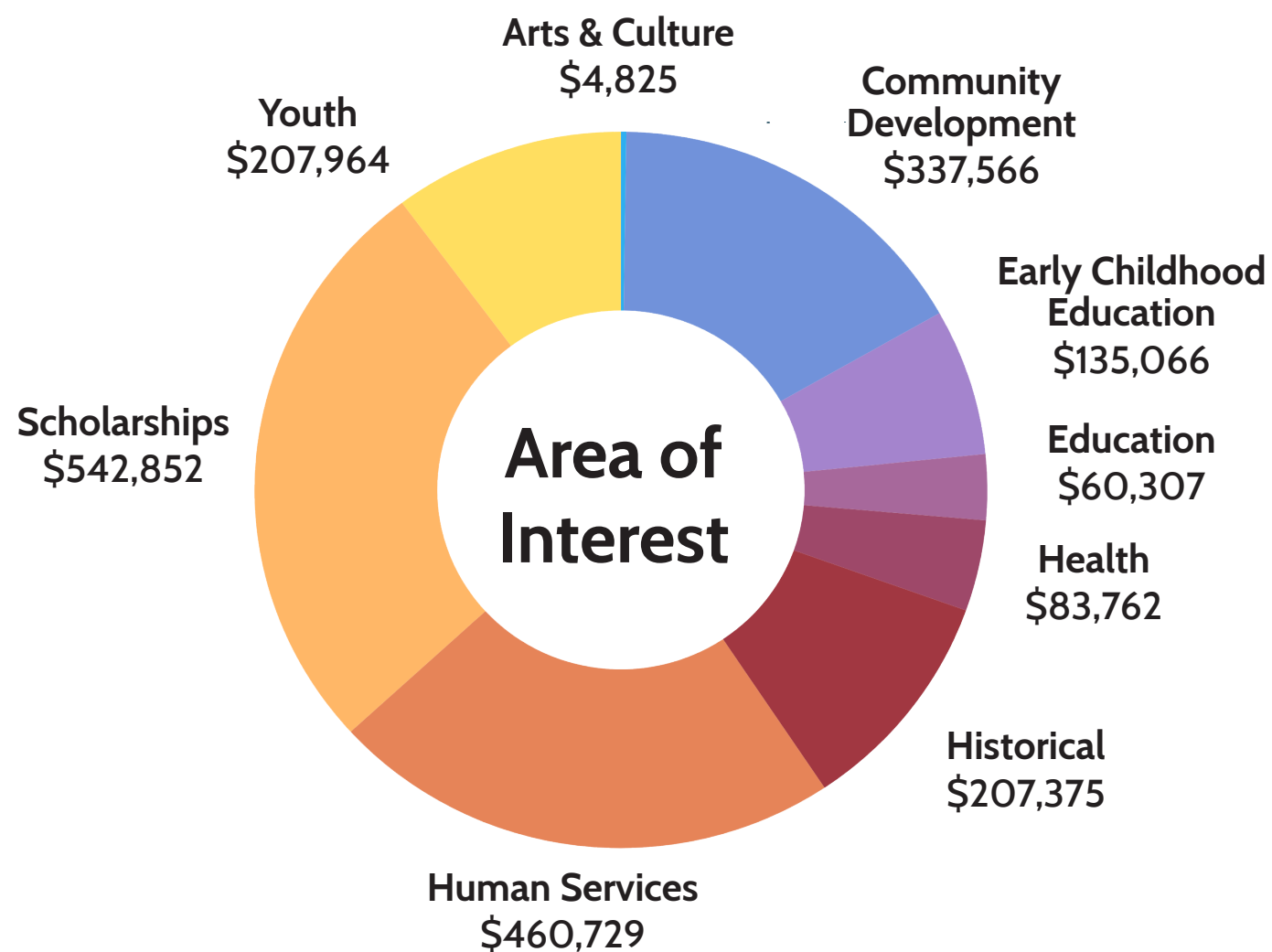
Kelly S. Taylor
Chief Executive Officer

Looking forward.

Giving back.

2024 MCCF Grants by the Numbers

\$2,040,446



For nearly 40 years, **Trinity Life Ministry** has been dedicated to transforming lives affected by addiction. Their mission is to empower men to break free from their struggles by walking with them on their journey. The organization began their “Unswerving Commitment” fundraising challenge after recognizing the struggles that participants face after completing the one year program. Finding transportation and housing, paying for insurance, court fees, child support, and utilities are just a few of the issues that quickly arise.



To help ease the transition, they started to explore the possibility of offering low-cost housing to men who complete their program, along with an additional 1-2 years of continued training and discipleship. Capacity constraints limited this expansion, until their prayers were answered in the form of a 10,000 square foot building in Linden, gifted to the organization in 2022. The new space would allow Trinity to provide housing for an additional 20 men while they work to save and find a job/vocation that pays a living wage.

Much of the building is unfinished or in need of remodeling to make it all work. Trinity is hoping to raise \$500,000 to complete the expansion. The MCCF funds will not only contribute to their overall goal, but will also help meet requirements for additional matching grant opportunities.



In March, **FISH Food Pantry** received a brand new Dodge Cargo Van, thanks to an anonymous gift given through MCCF. Its flashy new wrap makes it easy to spot! Historically, FISH has relied on the goodness of volunteers using their personal vehicles to transport food. While it has certainly been appreciated, most personal vehicles cannot accommodate large quantities of food, often packed on pallets.



Consequently, they miss out on food that is deeply discounted and sometimes free. The new van will allow them to better, and more economically, stock the pantry and therefore, better meet the needs of their clients.

Need for the pantry has increased tremendously since 1969. According to their 1996 annual report, in 1995, the pantry served 885 families for the year, a 50% increase over the previous year. Today, FISH reports it serves nearly 450 clients per month. The need has far outpaced the county’s population growth of just 11% since the 1970 census. The new FISH van brings a valuable service to many Montgomery County families.



Honoring All Veterans

What a joy it was to be a part of the dedication of the new **Veterans Memorial Park** in September! The park is a tribute to the service and sacrifice of local veterans and is located on South Washington Street between the American Legion and the National Guard Armory. The project has truly been a community effort with donations from countless individuals, organizations, and businesses. We are proud to have been a small part of this big effort by awarding two grants totaling \$22,000.

The park features monuments, the American flag and the Indiana State flag, along with flags representing each branch of the US military. Various military vehicles and equipment are also displayed, including a 1969 Huey helicopter. Inscribed bricks purchased by supporters pave the sidewalk circling the park.

The gifts were made possible by the DeVon W. and Mary Jane Flaningam Fund. The couple established the fund to serve two purposes, to benefit veterans and to benefit youth.



Lt. Col. DeVon Flaningam was in the Army Air Corps in WWII and served in the Air Corps Reserve from 1946 – 1976.

Although DeVon and Mary Jane have both passed, they continue to give back to the community they deeply cared about through a bequest with MCCF. We are grateful for their gift and proud to help honor those who have served on their behalf.

Tools of the Trade

Crawfordsville Main Street knows the number of skilled tradespersons qualified to work on historic properties is dwindling. That’s why they are working to develop the next generation of historic preservationists through “Heritage Trades Workshops,” funded with a portion of their \$31,280 MCCF grant awarded in 2024. The first workshop was held in June and welcomed anyone with an interest in historic property restoration. Using the historic wood floors and masonry of the Masonic Cornerstone Grand Hall and Event Center, seasoned artisans led a group of 16 local property owners through restoration and repair techniques. The workshop provided a chance for participants to build confidence before completing their own projects.

The second workshop was a special partnership with West Central Technical & Career Education. Nineteen high school students in the Construction Trades program were able to tour the Ben Hur Building to see the renovations taking place. Built in 1911, the downtown Crawfordsville landmark is in the midst of being restored to its former glory after sitting vacant since 2006. Students heard from developers about the need for skilled trades and possible internships. The group then returned to the Masonic Cornerstone, where they took part in two different hands-on learning experiences in historic masonry and plaster.

According to Todd Zeiger of Indiana Landmarks, the knowledge base required to work in the field is being lost at an alarming rate. “In the age where it’s faster and cheaper to do everything new, we

have few people to do the work and even fewer able to train in those areas.” Zeiger added that contractors qualified to work on historic buildings have an added layer of job security.

It is the hope of Crawfordsville Main Street that these workshop opportunities will help spark an interest in preservation among the next generations.

Photos courtesy of Crawfordsville Main Street



Arts & Culture

Art League: \$1,025
Support from designated fund

Athens Arts Gallery: \$500
Sign removal at former location

Sugar Creek Players: \$3,300
Support from designated fund, Volunteer of the Year Award honoring Nate Baldwin

Community Development

Animal Welfare League: \$17,423
New HVAC system and computers for office staff, support from designated funds

Bethel AME Church: \$375
Support from designated fund

Brian Bowman VFW 1431: \$273
Support from designated fund for Veteran's Day Lunch

Crawfordsville District Public Library: \$25,250
Support from designated funds

Crawfordsville Main Street: \$113,006
Heritage Trades workshops, outdoor furnishings, resource guide, office furniture and equipment, tree at Pike Place, Canine Plaza fountain, and support from designated funds

Crawfordsville Park & Rec: \$760
Support for Kathy Steele Park from designated fund

Crawfordsville Police Dept: \$1,220
Support from designated funds

Darlington Forever, Inc: \$7,350
Support from designated funds

Friends of Sugar Creek: \$185
Support from designated fund

Habitat for Humanity: \$430
Support from designated fund

Journal Review: \$2,500
Christmas Lights contest

Mace Cemetery: \$350
Support from designated fund

Milligan's Flowers: \$154
Cemetery flowers from designated funds

Sugar Creek Players: \$25,000
Architectural study; curb to stage improvements

Sugar Creek Township Trustee: \$890
Support from designated fund

Town of Ladoga: \$74,425
Ladoga Elementary playground project

Town of New Richmond: \$150
Support from designated fund

Town of Waveland: \$840
Support from designated fund

Town of Wingate, Parks & Rec Dept: \$300
Support from designated fund

Veterans Memorial Park: \$10,000
Purchase of Humvee for new park

Wabash Avenue Presbyterian Church: \$2,860
Support from designated funds

Wabash College: \$320
Support from designated fund

Waynetown United Methodist Church: \$2,935
Support from designated fund

Early Childhood Education

Fuzzy Bear Preschool: \$22,315
New doors and equipment for infant room

Hand in Hand Learning Center: \$2,314
Women's Legacy Fund grant for supplies and professional development

MCCF Bridge: \$75,000
Montgomery County Early Learning Center project

Montgomery County Extension Homemakers: \$450
Women's Legacy Fund grant for Head Start Reading

New Hope Christian Church Preschool: \$8,141
Equipment for gross motor skills area

North Montgomery School Corporation: \$19,833
Expansion of Early Learning Academy program

Putnam County Family Support Services: \$1,500
Women's Legacy Fund grant for Operation Brain Build

Rainbows & Rhymes Preschool: \$2,559
Professional development for staff

Southmont Schools- Little Mounties Preschool: \$600
Support from designated fund

United Way in Montgomery County: \$2,354
Women's Legacy Fund grant for Dolly Parton Imagination Library

Education

Crawfordsville Adult Resource Academy: \$13,800
Testing materials, smart board, Rise to the Top program

Crawfordsville Community School Corporation: \$8,813
Support from designated funds

Montgomery County Educational Foundation: \$32,900
Teacher grants, support from designated funds

North Montgomery High School FFA: \$240
Support from designated fund

Sommer Elementary School: \$160
Support from designated fund

Southmont Schools - Fire & Rescue CTE Program: \$220
Support from designated fund

South Montgomery Schools- HS Choir Programs: \$190
Support from designated fund

Tri Kappa Sorority: \$590
Support from designated fund

Health

American Lung Association: \$1,063
Support from designated fund

Crawfordsville Community Schools: \$10,000
Student health and welfare

Montgomery County Free Clinic: \$35,544
Women's health program, support from designated funds

North Montgomery School Corporation: \$7,935
Student health and welfare

Psi Iota Xi: \$1,640
Speech and hearing services

Riley Children's Foundation: \$3,680
Support from designated funds

South Montgomery School Corporation: \$10,000
Student health and welfare

Historical

Carnegie Museum of Montgomery County: \$7,000
Materials for new exhibit

Montgomery County Cultural Foundation: \$56,666
Support from designated fund

Historic Ladoga: \$14,110
Support from designated funds

Montgomery County Historical Society: \$45,824
Roof repair and tree removal; support from designated funds

Low Wallace Preservation Society: \$83,775
Carriage House restoration; support from designated funds

Human Services

Abilities Services, Inc: \$7,005
Parking lot lighting; support from designated funds

City of Crawfordsville: \$94,270
Mobile Integrated Health training; Early Years Initiative grant

Crawfordsville Fire Department: \$1,274
Disaster assistance

Family Crisis Shelter: \$11,130
Support from designated fund

First United Methodist Church: \$20,000
MontCares work

FISH Food Pantry: \$69,971
New van and purchase of food

Food Finders Food Bank: \$5,000
Food purchases

Grace & Mercy Food Pantry: \$10,000
Purchase of equipment and food

Isaiah 117 House: \$600
Support from donor advised fund

Montgomery County Treasurer: \$5,411
Drug Court, Family Recovery Court, Veteran's Treatment Court

Mountie Mission: \$7,600
Supplies for Back to School program

Recovery Coalition: \$35,002
Kitchen renovation

Sunshine Vans: \$21,930
Matching funds for new van purchase

Sylvia's Child Advocacy Center: \$1,429
Child abuse disclosure and prevention education

Through the Gate: \$19,000
New roof

Trinity Mission: \$109,166
New van; Unswerving Commitment campaign

United Way in Montgomery County: \$35,825
Support from designated funds

Volunteers for Mental Health: \$1,000
Youth Volunteer of the Year Award Honoring Jessica Bradley

Wabash Center for MAGS (Montgomery Adult Guardian Services): \$3,725
Support from designated fund

Women's Resource Center: \$15,290
Medical supplies and program assistance, support from designated funds

Youth

Boys & Girls Club of Montgomery County: \$127,953
Academic success program, support from designated funds

Camp Rotary: \$430
Support from designated fund

Crawfordsville Park & Rec: \$5,361
Camp Milligan Intern

Montgomery County 4-H: \$3,195
Support from designated funds

New Hope Christian Church: \$1,982
Women's Legacy Fund grant for Hope Camp

Sugar Creek Swim Club: \$410
Support from designated fund

United Way in Montgomery County: \$5,000
Women's Legacy Fund grant for Dolly Parton Imagination Library

Volunteers for Mental Health: \$450
Women's Legacy Fund grant for Youth Summit

Youth Service Bureau: \$63,183
Funding for programs and operations; support from designated funds



Breaking New Ground

A groundbreaking ceremony was held in April to kick off the construction and renovation of the new **Montgomery County Early Learning Center**. Located in the former county government building at 110 W South Boulevard in Crawfordsville, this state-of-the-art facility will provide 124 high-quality childcare seats for infants through age five.

The new center is the result of a \$5 million investment made possible through a unique partnership of businesses, government, and philanthropy. Investors in this project include: Acuity Brands, City of Crawfordsville, DES Engineering, Early Learning Indiana, Hoosier Heartland State Bank, Lakeside Book Company, Montgomery County Community Foundation, Montgomery County, Indiana Government, North Central Health Services, Nucor Indiana, Penguin Random House, State of Indiana, Tempur Sealy, Tipmont, Tri-County Bank & Trust, and Wabash College.

KinderCare Learning Centers will operate the new facility, which will open in the Spring of 2025. Their company has more than 55 years of experience providing early childhood care and education, combined with expertise in child development and research-based curriculum. KinderCare also has the most nationally accredited early learning centers of any private provider in the country.

This transformative community project comes at an opportune time as Montgomery County sees new growth. Access to reliable child care is often a deciding factor for parents when considering where to live and work. By investing in child care infrastructure and programs, Montgomery County is laying the groundwork for long-term economic prosperity.

The youngest patrons of the Crawfordsville District Public Library decorated hard hats for the celebration.



The Montgomery County Early Childhood Coalition (MCECC) had another busy year! The **Professional Learning Series** for local educators returned in the spring, offering four sessions on a variety of topics including reading to children, incorporating STEAM activities in classrooms, and healthy brain development.

It also included the **4th Annual Early Learning Expo**, where we welcomed 60 educators to the Masonic Cornerstone. Guests enjoyed breakfast, had time to visit with 16 vendors, learned about opportunities within the field of early childhood education, and went home with plenty of swag for their classrooms!



The first-ever **Family Fun Day** was also on the books for the MCECC. Daniel Tiger himself made a special appearance! This free event was hosted at Crawfordsville High School on April 20. Over 200 families enjoyed snacks, games and activities, touch-a-truck, and story and music time.

This was also a great opportunity for families with little ones to connect with local resources. Nearly 30 local organizations were on hand to provide information on early learning programs, child care, car seat safety, and much more.

Camp Milligan was back for its third summer at the Crawfordsville Community Center. Camp counselors welcomed 40 full-time campers on May 28. Ten weeks of fun flew by, full of adventure, learning, and plenty of field trips! Each week held a different theme such as Chef Academy, Totally Tye-Dye, and Camp Olympics. Field trips included local museums, water parks, and even an Indiana Fever game!

Camp Holly Jolly Days held its second winter session during the first week in January. Parents welcomed the opportunity for their children to participate in fun activities while school was out during Christmas break. Forty children attended and enjoyed field trips to the CHS Aquatic Center and Plaza Lanes Bowling. In addition, they joined in STEAM lab activities, arts and crafts, and burned some energy during open gym.





Back Home Again

There's no place like home for Calli (Deedrick) Mayotte, a former MCCF scholarship recipient. Now back in Montgomery County, she's making a difference with the City of Crawfordsville's Mobile Integrated Health Program.

Calli, a 2010 graduate of Southmont High School, majored in Elementary Education at Franklin College. She began her career in Greenwood teaching preschool, then moved into 2nd and 5th grades. Wanting to be closer to family, she and husband Richard, along with sons Cooper and Reid, moved back to Montgomery County in 2017.

Calli began working for Valley Oaks Health and the Indiana Department of Child Services. She saw firsthand the heartbreaking challenges local parents and children face as a Family Case Manager. When an opportunity to join Project Swaddle, a division of the City of Crawfordsville's Mobile Integrated Health came up, Calli jumped at the chance to share her skills with a new client base.

Project Swaddle is a home-visiting program that provides a community paramedic and RN/BSN as physician extenders to reduce poor maternal and infant health outcomes. The physician extenders deliver wrap-around care for perinatal mothers, infants, and their families who face any number of health, social, and environmental challenges.

In 2023, MCCF partnered with Mobile Integrated Health to write a grant for the Early Years Initiative, a state-wide competitive grant focused on ensuring that infants and toddlers develop foundational knowledge and skills that support their future learning and development. Our proposal included the addition of a social worker to help Project Swaddle participants as their children grow.

The job opening for an Early Learning and Family Support Specialist was a perfect fit for Calli. She has worked to create Foundations, an extension of Project Swaddle.

Calli recently finished training and has begun meeting with 13 families, providing home visits on a bi-weekly basis and helping connect them with any necessary resources. "Empowering parents and reassuring them that they're doing the right things is so important," Calli said. The overall goal of the program is to meet the needs of vulnerable, at-risk populations in an effort to strengthen the family unit.

She is thankful for her education, which has proven to be a solid base to build her career. While in college, Calli received the Florence and Lee Servies Scholarship for students pursuing careers in education.



Calli with husband Richard and sons Cooper and Reid

"Having scholarships lessened the financial burden and allowed me to focus on my degree. Now I'm able to use my education background to plan literacy and child development activities for families. It's rewarding to be able to meet them where they are and work from there."

Although still fairly new, Calli is seeing progress and is excited for the future of the program. She hopes it continues to grow and expand outreach to parents all over the community. For now she is enjoying the early stages, adding that "coming home was definitely the right choice for us."

Harriet Taylor Allen Scholarship

Elizabeth Jeffries

William and Louise Allen Scholarship

Megan Andrews
Cassandra Bone

Arvin-McCord Scholarship

Catherine Martin

Linda Beshaw Memorial Scholarship

Samantha Rohr

Edith V. Botts Nursing Scholarship

Ashlynn Anderson
Bailey Barker
Olivia Biddle
Kaydence Brost
Elizabeth Cain
Ashley Coffing
Paige Corbin
Sydney Cox
Carlie DeSmet
Halle Elliott
Ella Fritzen
Mary Go
Lily Gobel
Elle Gray
Olivia Gray
Hailey Hester
Paige Hudson
Devan Johnson
Lilly Klingbeil
Abbie Lain
Madison Livesay
Hanna Long

Harmonee Margison
Liddy McCarty
Lily McDorman
Reese Minnette
Emma Mitchell
Bailey Mittal
Jaydelyn Phillips
Megan Raff
Cadence Richmond
Jayda Roach
Kennady Sanders
Frances Shaw
Hannah Sheetz
Skylah Strawser
Gabrielle Warren
Madison Welch
Amy Weliver
Emily Weliver
Madison Willhite
Avery Williams

Brian Bowman Scholarship

Gabrielle Warren

Walter C. Bridgewater Scholarship

Brooklyn Hamm

Dr. Robert Brower Educational Scholarship

Sydney Neideffer

Fred and Ina Clark Scholarship

Justin Bachmann
Olivia Biddle
Cassandra Bone
Emily Bost
Elizabeth Bowling
Hadley Broadwater

Megan Buser
Alexander Chapman
Patrick Corado
Miranda Crowe
Joy Davis
Tiffany Dittmer
Kelsey Donovan
Rylan Dowell
Brooke Ellenberger
Abigail Eutsler
Olivia Fichter
Frances Fuller
Tyson Fuller
Lauren Hale
Ian Hensley
Hailey Hester
Landon Hurt
Brett Keller
Cameron King
Madison Livesay
Catherine Martin
Aidan Mason
Lily McDorman
Hannah McLean
Maggie Michael
Reese Minnette
Bailey Mittal
Samantha Mooday
William Myers
Sydney Neideffer
John "Drew" Norman
Prachi Patel
Kaden Patton
Zoe Petit
Cailin Phillips
Benjamin Pietsch
Eli Reeves
Abigail Saylor
Megan Scheidler
Chaney Scott



North Montgomery High School scholarship recipients

Fred and Ina Clark Scholarship

(continued)

Krista Sixberry
Stella Snook
Haley Sommer
Gabrielle Warren
Dara Watson
Madison Welch

Community House for Women and Girls Scholarship

Gabrielle Warren

Pauline W. Conover Scholarship

Ashlynn Anderson
Annabel Anderson
Nancy Blanchard
William Campbell
Addison Charles
Paige Corbin
Natalie Dossett
Claire Edwards
Rachel Fedor
Mateo Flores
Ella Fritzen
Nina Gable
Mary Go
Elle Gray
Alexander Hernandez
Azaria Howard McGregory
Kela Johnson
Micah Korhorn
Brooklyn Kruse
Logan Link
Amaya Moore
Espan Moreno
Alexis Murphy
James Murphy
Logan Oppy

Karlie Pfladderer
Jacob Pike
Samantha Rohr
Eva Rose
Gabrien Smith
Clayton Tyo
Margaret Yeager

Durham Home Inc. Scholarship

Gabrielle Warren

Durham Home Inc. Scholarship in Honor of Shirley O'Neall

Heaven Smith

Raelyn Earley Memorial Softball Scholarship

Megan Raff

William H. Earley Scholarship

Madelyn Bower

Madonna Everhart and Betty Howard Nursing Scholarship

Dillan Lauy
Madison Livesay
Hailey Hester
Hanna Long
Olivia Powell
Frances Shaw
Seth Tolliver

Nancy Gibson Memorial Scholarship

Kaidence Bullock

Frances E. Gray Scholarship

Claire Bonwell
Alison Brown

Elizabeth Cain
Alexander Chapman
Kion Cornelius
Tiffany Dittmer
Kelsey Donovan
Breanna Dulin
Halle Elliott
Xavier Essex
Nina Gable
Mary Go
Olivia Gray
Jacob Hughes
Landon Hurt
Alex Kellerman
Brady Largent
Paul Lueking
Grace McClaskey
Hannah McLean
Jada Moore
Mallory Murphy
Lillie Odom
Abigail Saylor
Hannah Sheetz
Lauren Tricker
Gabrielle Warren
Emily Weliver
Wyatt Woodall

Jim and Bev Harpel Basketball Scholarship

Tyson Fuller

Hoosier Heartland State Bank Scholarship

Nolan Boyer
Alison Brown
William Campbell
Alexander Chapman
Lauren Hale

Crawfordsville High School scholarship recipients



Hoosier Heartland State Bank Scholarship *(continued)*
 Kearston Hutchens
 Grace McClaskey
 James Murphy
 John "Drew" Norman
 Ryan Reimondo
 Stella Snook

John and Ruth Isaacs Scholarship
 Nancy Blanchard
 Carson Chadd
 Abigail Eutsler
 Rachel Fedor
 Gerald Hutson
 Brett Keller
 Vidushi Kiran
 Samuel Sheetz
 Hayden Turner

Max W. Johnson Scholarship
 Porter Bennett
 Levi Brush
 Cascie Keller
 Sophia Morris

Van Johnson Scholarship
 Courtlyn Carpenter

Cory Knecht Memorial Scholarship
 Emily Weliver

Payton Kobel Scholarship
 Alexander Chapman

Lilly Endowment Community Scholarship
 Sidney Campbell
 Marshall Horton
 Gabriel Little
 Madison Moseley

Jim and Kim McBee Family Scholarship
 Paige Hudson

MCCF Community Scholarship
 Paul Lueking

MCCF Initiative Scholarship
 Thomas Bowling

Jeff McClaskey Student Athlete Scholarship
 Jessica Bradley
 Paul Lueking
 Ryan Miller

Mike McCord Scholarship
 Miranda Crowe

Connie Meek Scholarship
 Mikaylin Figg

Thelma Biddle Nolte Scholarship
 Paige Hudson
 Elizabeth Jeffries
 Johnna Miller
 Brie-Ann Million
 Emily Powell
 Shayna Ratcliff

Brent Runyan
 Nivek Witt

Myron and Patsy Pattison Scholarship
 Heaven Smith
 Clayton Tyo

James C. Patton Instrumental Music Scholarship
 Zurisadai Santana Roldan

James and Patti Pearson Scholarship
 Brie-Ann Million

Cole Petty Scholarship
 Jenna Bushong

Prudence Kimball Phillips Chemistry Award
 Tyson Fuller
 Whitman Horton

Ted and Betty Ratcliff Scholarship
 Paige Hudson

Ernest and Diana Rhoads Scholarship
 Harmonee Margison
 Cailee Wilson

Wayne Rush Scholarship
 John "Drew" Norman

Florence and Lee Servies Scholarship
 Olivia Bobenmoyer
 Adam Cox
 Kela Johnson
 Brady Largent
 Brie-Ann Million

Joseph and Clara Smith Scholarship
 Jessica Bradley

Amber Powers Sparks Scholarship
 Hanna Long

Fred D. and Anna Faye Stevenson Scholarship
 Samantha Rohr

Fred D. Stevenson Golf Scholarship
 Shayna Ratcliff

Debra Kay Stonebraker Memorial Scholarship
 Nivek Witt

Sheri Switzer Memorial Scholarship
 Sydney Neideffer

Bob J. Tandy Scholarship
 Hayden Hess

Martha Fudge Vance Award
 Aleyah Jones

Jerry and Dorothy Servies Vaughn Scholarship
 Wyatt Woodall

Homer C. Warren Family Scholarship
 Gavin Berry
 Claire Bonwell
 Brecken Hardy
 Rylie Koopman
 Grace McClaskey
 Sophia Morris
 Grace Runyan
 Hayden Turner

David C. Wells Science Award
 Whitman Horton



Southmont High School scholarship recipients



"I am tremendously fortunate to be named this year's Lilly Endowment Community Scholar. I am extremely thankful to the Montgomery County Community Foundation and Lilly Endowment for believing in me and investing in my education."

This scholarship is an incredible opportunity and I am grateful for the opportunities in my life that it will open. It is the highest honor to be named this scholar in such a great community. I aspire to use this further education to bring positive change back to Montgomery County."

-Campbell Mason
 2024 Lilly Endowment Community Scholar



The Rose Mary Duncan Barragree Fund



Amy Barragree describes her mother, Rose, as a kind and loving soul who welcomed the opportunity to help anyone in need. Rose was a helping hand, a strong shoulder, and a listening ear for generations of friends and family. She volunteered for many years at the Wesley Thrift Shop, and that same spirit of philanthropy lives on in her daughter and grandchildren. Rose maintained a quiet and steadfast faith in Christ throughout her life, and her greatest joy was being a mom and a grandma. She was a talented oil and watercolor artist and her beautiful artwork is a treasure for friends and family. When Rose passed away, Amy desired to honor her mother in a meaningful way and established this designated fund in her memory. It will provide support to Cats Limited in Montgomery County whose purpose is to reduce the suffering and proliferation of homeless cats in our community.

The Catherine Stevenson Beemer Graduate Scholarship

Catherine Stevenson Beemer has strong ties to Montgomery County. Her parents were residents here for many years, as well as several relatives. Growing up in Crawfordsville, Catherine received a terrific foundation for her life, and she is grateful for the values she learned here that has carried her through life. Her parents, Fred and Anna Faye Stevenson, were exceptional in their work ethic and generosity, and their example contributed greatly in shaping the person Catherine is today. Her father, Fred, established a MCCF scholarship fund years ago and now Catherine is following his example. As a former educator and one who is passionate about helping others further their education, Catherine established this fund to assist graduate students continuing their education in the areas of special education, mental health, and school administration.



The Rusty and Kathy Carter Family Fund

Crawfordsville has been home to Rusty and Kathy Carter since 1977 when they purchased New Ross Grain. After owning and operating that business for several years, they sold it and then both began careers in real estate. Those careers spanned 35 years and they felt blessed by the loyal support of this community, and by the joy of working with the great people that live and work here. In addition to their careers and raising three children, they found time to volunteer in many areas of community service through their church and other organizations. Their desire is to leave a legacy that will continue to give back for years to come and help this community thrive. Because education has been so important to the Carter family, Rusty and Kathy wanted to contribute in a way that would further educational opportunities for others. They established this Field of Interest fund that will provide support in the areas of education throughout our community.



The James and Linda Cherry Fund

The arrival of three grandchildren was all the motivation Jim and Linda Cherry needed to move from Connecticut to Crawfordsville in 2012. Prior to retirement, both had careers in education; James taught high school chemistry, and Linda taught art, and served in school administration. Jim and Linda quickly became active in our community through their church and serving on local boards and committees. Linda is an active member of the local Art League, and past president of FISH. After Jim's death in 2020, Linda felt the time was right to establish this fund in honor of their service in the community. An additional incentive to start this fund came through the Lilly GIFT VIII matching gift program that offered a \$2:\$1 on unrestricted funds. As a Rotary member, and as a Lutheran, Linda believes in the "service above self" approach to life. She has put that belief into practice, as this unrestricted fund will provide support to areas of greatest need in our community for many years to come.



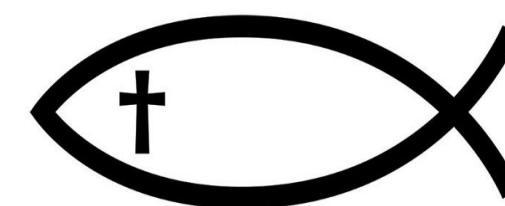
The Crawfordsville Main Street Fund



Since its establishment in 2002, Crawfordsville Main Street has been working to preserve and showcase the special history, beauty and character of the Crawfordsville Commercial Historic District. Part of this outreach includes popular events like Downtown Party Night, First Fridays, and Lunch on the Plaza. Their large team of volunteers and staff strive to make Downtown Crawfordsville a preeminent destination for those who enjoy the benefits of an authentic, vibrant, and welcoming historic small town. The Crawfordsville Main Street Fund at MCCF will provide annual support to assist with operating and program expenses.

The FISH of Montgomery County/ FISH Food Pantry Fund

FISH has been serving the hungry in Montgomery County since 1969, and was incorporated in 1971. It was founded by the Rev. Frank Little, the pastor of the First United Methodist Church at that time, as a mission for meeting the emergency needs of our neighbors in need. While the food pantry has perhaps been the most visible arm of the ministry, FISH also operates a clothing closet at Wabash Avenue Presbyterian Church and a linen closet at First Baptist Church. Bill Doemel established this fund in honor of all those who had the vision to start FISH, and those who have given their time and donations enabling FISH to serve our community for over 55 years. The FISH of Montgomery County / FISH Food Pantry Fund is a designated fund that benefits FISH of Montgomery County which operates the food pantry, linen closet and clothing closet to assist Montgomery County residents in need.



The Pearl and Don Livingston Fund



After Don Livingston graduated from Purdue University with a BS in agriculture, he fulfilled his ROTC obligation to serve in the Army and returned to Montgomery County with his wife, Jane. They lived on the family farm near Waynetown, raising hogs, cattle, and horses in addition to crop farming corn and soybeans. He was known for his innovative vision and ability to fabricate and repair anything. Don had a strong work ethic and his motto was, "If ya rest, ya rust." Time spent in his tractor often resulted in plans and dreams that he would see through to completion. Don was an active community member and served on various boards and committees, and loved to sing in the choir at Wabash Avenue Presbyterian Church. Don and Jane enjoyed traveling around the U.S. and Canada in their motor home, and camping with their family. Don established this fund as a pathway fund in memory of his mother, Pearl, when she passed away. Jane then added Don's name to the fund when he passed away last year. It is now a fully established unrestricted fund and will provide support in the areas of greatest need in our community.

The Montgomery County Early Learning Center Fund

In 2019, the MCCF Board made a decision to focus on improving child care in the community. As we began to look for opportunities to expand the number of seats available, it became apparent that innovative and creative solutions would be necessary. Four years later, the Montgomery County Early Learning Center is a reality. Located in the former Montgomery County Government offices on South Boulevard in Crawfordsville, the center will have 124 child care seats for ages 6 weeks through 5 years old. This fund will provide annual support to the center and help ensure a brighter future for Montgomery County's greatest asset- our children.



The Michael L. and Karen A. Patton Fund



Michael and Karen Patton have been actively involved in the Montgomery County community for many years. Michael worked at R.R. Donnelley and Sons for 35 years, and Karen was a teacher in the North Montgomery School Corporation. They raised two children, Michael Williams and Kristen Patton. Their son, Michael, had autism with severe communication and behavioral issues. During difficult times, the Pattons received help from one of the many local nonprofit service organizations. Their daughter, Kristen, received a MCCF scholarship and graduated with a nursing degree. The Pattons stated, "You never know when you will need the help of an agency in the community, but when that time comes, it is good to know that the Montgomery County Community Foundation supports organizations that provide for those in need." They chose to establish this unrestricted fund because it allows the MCCF to put the resources in the areas of greatest need.

The Red and Martha Vail Fund

Lifelong residents of Montgomery County, Marvin (Red) and Martha Vail were very active in the Linden community where they lived and raised a family. Red served as Linden Town Clerk for several years, co-founded the City Service gas station in Linden, and found time to coach various youth baseball teams. Martha worked at Tipmont for nearly 30 years and volunteered with her daughter's Girl Scout Troop. Red and Martha placed a high value on reading and learning, and it was rare to see Martha without a book at home. Their children, Mark and Denise, have fond memories of visiting the Linden library on a weekly basis. Mark and Denise are grateful for the positive influence their parents provided, and wanted to give back to the Linden community where they "grew up among a lot of really good people." They established this designated fund to provide support to the Linden Carnegie Public Library in memory of their parents.



The Wesley Thrift Shop Fund

For 65 years, the Wesley Thrift Shop has been a staple in our community. Founded in 1960 by the Women's Society of the Crawfordsville First United Methodist Church, their mission was to raise money for church and community projects. The Wesley Thrift Shop provides a place to purchase clean, good quality clothing, small household items, and books at affordable prices. Consigners can receive a reasonable return selling items. A volunteer staff of community members takes care of the day-to-day operations. Since its inception, the Wesley Thrift Shop has provided over \$200,000 to support missions in our community, our country, and elsewhere in the world. This Unrestricted Field of Interest Fund will provide support for women, children and families in our community.



How does an endowment work?

An endowment is a "savings account" within which a substantial amount of money can be built from contributions both large and small. These gifts are invested in a balanced, diversified portfolio and the proceeds are used to support specific nonprofits or projects as determined by the foundation's community leaders. The scope of the endowment is defined by the people creating it. The staff of the Community Foundation handles the "administrative detail" and frees up those critical volunteers to evaluate and assess the needs and opportunities within the community.

Generally, donors to endowments are those who want to ensure the future of their community. Most endowment gifts are "planned" and donors use such charitable vehicles as bequests, trusts, life insurance policies and retirement accounts. Whatever the gift, donors make it with the intention of having it prudently invested and protected for the future. When the foundation accepts an endowment gift, the foundation promises the donor that their wishes will be observed.

INVESTING IN OUR COMMUNITY

made easy!

Each donor we work with has unique charitable interests and unique financial circumstances. We help you make the most of both, so you **receive the greatest return on your community investment.**

Types of Gifts Accepted by MCCF

Cash Gift: The simplest method of giving is to send a personal check.

Appreciated Securities: When you give long-term appreciated securities, not only do you receive an income tax deduction equal to the market value of the securities, but you also avoid capital gains taxes on the transfer.

Real and Personal Property: A residence or other real property may be given as an outright gift, or you may prefer to give your residence, farm, or vacation home.

Bequest by Will: You can designate a gift or portion of your estate to the Montgomery County Community Foundation and, in some cases, receive a substantial reduction in federal gift and estate taxes.

Life Insurance: When you give a life insurance policy to charity, the tax deduction will be based on the policy's present value (total premiums paid) or its cash surrender value, whichever is less. Any premiums you continue to pay after your gift are also deductible.

Charitable Beneficiary Designation: Naming the Montgomery County Community Foundation as a beneficiary in your life insurance or retirement plan is easy to do, and the gift that results will benefit our community in a lasting way. Making the Community Foundation a beneficiary of your IRA or qualified retirement plan also avoids income tax when the distribution is received.

Charitable Gift Annuity: You can make a gift of cash or property to the Montgomery County Community Foundation now, get immediate tax benefits, and ensure that you or a loved one receive fixed quarterly or annual annuity payments for life.

Charitable Remainder Trust: You can place cash or property in a trust that pays annual income to you (or other beneficiaries) for life or a term not to exceed 20 years. When the trust is terminated, the remainder of the trust transfers to the Montgomery County Community Foundation and is placed into a charitable fund you have selected. You receive income tax benefits in the year you establish your trust.

Charitable Lead Trust: You can place cash or property into a trust that pays a fixed amount to the Montgomery County Community Foundation for the number of years you select. Once this period ends, the assets held by the trust are transferred to the beneficiaries you name. In some cases, you receive a substantial reduction in federal gift estate taxes.



Building Bridges

In 2021, MCCF partnered with Hoosier Heartland State Bank to create the **Bridge Builder Nonprofit Loan Program**. This model of community investing is used to help address issues that fall beyond the scope of, or the capacity of, our traditional grantmaking. If eligible, nonprofit organizations are offered low to zero interest loans. This year we were excited to close on the first loan through the program!

In January, Connie Esra, Director of the Recovery Coalition signed closing documents on a loan that allowed them to purchase the building they occupy at 1300 Ladoga Road in Crawfordsville. The opportunity to purchase the building they rent aligned with a grant opportunity through the State of Indiana's Department of Family and Social Services Administration, along with the required 10% match from the county's unrestricted opioid settlement funds.



Connie Esra, Director of Recovery Coalition, Inc. signs documents with Trent Smaltz from Hoosier Heartland State Bank.

The grant was approved, however it was a reimbursable grant, meaning they had to make the purchase first. They didn't have the funds of their own to do this, but with the funds promised it was a perfect match for a Bridge Builder loan!

Recovery Coalition was formed in 2018 by those in recovery, along with others to foster recovery for those struggling with addiction. The Coalition created the Recovery Rec Center to promote sobriety, community, fellowship, and growth for those in recovery.

FUNDS A-C

The Abilities Services, Inc. Agency Fund - To provide support to Abilities Services Agency

The Abilities Services, Inc. Fund - To provide support to Abilities Services Agency

The Harriet Taylor Allen Scholarship Fund - To provide scholarships to Crawfordsville High School students

The William M. and Louise O. Allen Scholarship Fund - To provide scholarships to Montgomery County students with financial need

The Chuck and Jocelyn Anderson Fund - To provide support to Darlington Forever, Inc. for the Darlington Community Center

The Art League Fund - To provide scholarships to students with artistic ability

The Arvin-McCord Scholarship Fund - To provide a four-year scholarship to a student planning to become an elementary school teacher

The Kenneth and Patricia Bane Fund - To provide support to North Montgomery High School FFA

The Heather Barajas Fund - Unrestricted fund for the benefit of the Montgomery County community

The Rose Mary Duncan Barragree Fund - To provide support to Cats Limited in Montgomery County

The Catherine Stevenson Beemer Graduate Scholarship Fund - To benefit graduate students continuing their education in the areas of special education, mental health, and school administration

The Linda Beshaw Memorial Scholarship Fund - To provide support to the Sunshine Society of Crawfordsville High School for scholarships

The Bethel AME Heritage Fund - To provide support to the Bethel AME Church

The Missie Bickel No Hill for a Climber Fund - Unrestricted fund for the benefit of the Montgomery County community

The Bokhart Family Fund - Unrestricted fund for the benefit of the Montgomery County community

The Phil and Farzaneh Boots Fund - Unrestricted fund for the benefit of the Montgomery County community

The Samuel L. and Eva Fern Boots Fund - Unrestricted fund for the benefit of the Montgomery County community

The Preston and Anne Bost Early Childhood Education Fund - To provide support for early childhood (ages 0-5) education programs and services with a focus on and commitment to high quality care

The Edith Botts Scholarship Fund - To provide renewable scholarships to women in Montgomery County majoring in nursing or a medically related field

The Brian Bowman Memorial Scholarship Fund - To provide scholarships to high school students who are residents of Montgomery County

The Boys and Girls Club of Montgomery County Agency Fund - To provide support to the Boys and Girls Club of Montgomery County

The Boys and Girls Club of Montgomery County Fund - To benefit the Boys and Girls Club of Montgomery County

The Boys and Girls Club of Montgomery County Scholarship Agency Fund - To provide scholarships for higher education

The Luella Brake Trust Fund - To benefit the blind and visually impaired of Montgomery County and the prevention of blindness

The Walter C. Bridgewater Memorial Scholarship Fund - To provide scholarships for seniors at North Montgomery and Crawfordsville High Schools

The Rodney Britton Scholarship Fund by Howard and Maxine Cook - To provide scholarships to Montgomery County students for vocational or technical college

The Dr. Robert E. Brower Educational Scholarship Fund - To provide scholarships to North Montgomery high school students pursuing a degree in education

The Marie Canine Fund - To benefit the revitalization of downtown Crawfordsville

The Dr. Mark and Barbara Caress Education Fund - To benefit the Montgomery County Educational Foundation

The Carnegie Museum of Montgomery County Agency Fund - To provide support to the Carnegie Museum

The Harold and Linda Carpenter Fund - Unrestricted fund for the benefit of the Montgomery County community

The Rusty and Kathy Carter Family Fund - To provide support for educational purposes in Montgomery County

The Chase Fund - Unrestricted fund for the benefit of the Montgomery County community

The Richard F. and Elaine S. Chase Fund - Unrestricted fund for the benefit of the Montgomery County community

The James and Linda Cherry Fund - Unrestricted fund for the benefit of the Montgomery County Community

The Christian Nursing Service Fund - To benefit the Montgomery County Free Clinic

The Christmas Lights Fund - To provide prizes and awards annually for the best exterior Christmas displays in Montgomery County

The CHS Athenian Scholarship Fund - To provide scholarships for students from Crawfordsville High School

The Fred L. and Ina Clark Scholarship Fund - To provide renewable four-year scholarships to graduating seniors of Montgomery County High Schools

The Community Fund - Unrestricted funds to benefit the Montgomery County community

The Community House for Women and Girls Fund - To provide educational grants to Crawfordsville High School women who have financial need

The Pauline Conover Fund - To provide four-year renewable scholarships to seniors of Montgomery County High Schools

The Cornerstone Fund - Provides general support for the Montgomery County Community Foundation

The Tony and Cindy Cosenza Fund - Unrestricted fund to benefit the Montgomery County community

The Dorothy & Kenneth Coudret Fund - To benefit the Montgomery County Educational Foundation

The Hank and Nancy Coyle Fund - Unrestricted fund for the benefit of the Montgomery County community

The Crawfordsville District Public Library Agency Fund - To benefit the Crawfordsville District Public Library

The Crawfordsville District Public Library Fund - To benefit the Crawfordsville District Public Library

The Crawfordsville Housing Authority Fund - To provide support for low income housing

The Crawfordsville Main Street Fund - To provide support for Crawfordsville Main Street, Inc.

The Tom and Dolores Crews Fund - Unrestricted fund for the benefit of the Montgomery County community

The John and Betty Culley Fund - Unrestricted fund for the benefit of the Montgomery County community

FUNDS D-F

The Darlington Forever Fund - To benefit Darlington Forever, Inc.

The Dr. Fred and Elizabeth Daugherty Trust Fund - Unrestricted fund to benefit the Montgomery County community

The Marilyn J. Davidson Scholarship Fund - To provide scholarships for female graduates of Southmont or Crawfordsville High School and pursuing a degree in Education

The Sibyl V. Davis Agency Fund - To provide support to Historic Ladoga

The Sibyl V. Davis Memorial Endowment Fund - A gift from Herman Davis in memory of his beloved wife of seventy-three years for the benefit of Historic Ladoga

The Irwin Lee Detchon Fund - Unrestricted fund to benefit the Montgomery County community

The Margaret Evans DeVore Memorial Fund - To provide support to the Crawfordsville, Indiana Chapter of the Tri Kappa Sorority to carry out its role of awarding scholarships

The Ron and Trudy Dickerson Fund - Unrestricted fund for the benefit of the Montgomery County community

The Herman Dicks Fund - To provide financial assistance to Montgomery County residents age 65 and older

The Directors Fund - Unrestricted fund to benefit the Montgomery County community

The Maude Dockins Trust Fund - To provide educational opportunities to children in Montgomery County with cognitive and orthopedic impairments

The Dr. William and Nancy Doemel Fund - Unrestricted fund to benefit the Montgomery County community

The William, Nancy and Christopher Doemel Organ Maintenance Fund for Wabash Avenue Presbyterian Church - To provide support to the Wabash Avenue Presbyterian Church for maintenance on the organ when major repairs are needed

The Durham Home High School Scholarship Fund - To provide scholarships for Montgomery County female high school graduates

The Durham Home Inc. Scholarship Fund in honor of Shirley O'Neall - To provide scholarships for women who demonstrate financial need; do not have to be enrolled full-time

The Raelyn Earley Memorial Softball Scholarship Fund - To provide a scholarship for a North Montgomery High School senior who is a member of the girls' softball team

The William H. Earley Trust Scholarship Fund - To provide an educational scholarship for a student from the South Montgomery school district

The Ron Eden Fund - Unrestricted fund to benefit the Montgomery County community

The Earl F. and Ruby B. Elliott Fund - Unrestricted fund to benefit the Montgomery County community

The Leland and Dolores Epperson & Family Fund - Unrestricted fund to benefit the Montgomery County community

The Madonna Everhart and Betty Howard Nursing Scholarship Fund - To provide scholarships to Southmont High School students majoring in nursing

The Faith Alliance Fund in honor and memory of those affected by breast cancer - To provide mammography and health related breast care services

The Family Crisis Shelter Sumption Agency Fund - To benefit the Family Crisis Shelter in its services for victims of domestic violence and sexual assault

The Bob and Bill Fell Fund - Unrestricted fund for the benefit of the Montgomery County community

The Scott and Wendy Feller Fund - Unrestricted fund for the benefit of the Montgomery County community

The FISH of Montgomery County/FISH Food Pantry Fund - Benefits FISH of Montgomery County, which operates the food pantry, linen closet and clothing closet to assist Montgomery County residents in need

The Fisher Scholarship Fund - To provide scholarships for graduates of a Montgomery County high school pursuing a degree in Education

The DeVon W. and Mary Jane Flaningam Fund - To provide support for the Boys and Girls Club, Youth Service Bureau, and Veterans

The JP, Margaret and Judy Flint Fund - To provide support for the Darlington Community Center

The Friends of Sugar Creek Agency Fund - To provide support to the Friends of Sugar Creek organization

The Barbara and Larry Frye Fund - Unrestricted fund to benefit the Montgomery County community

FUNDS G-L

The Nancy Gibson Memorial Scholarship Fund - To provide scholarships to graduates from North Montgomery High School who are pursuing a degree in education

The Frances E. Gray Family Scholarship Fund - To provide scholarships to Montgomery County high school students

The Larry and Susan Griffith Fund - Unrestricted fund for the benefit of the Montgomery County community

The Jack and Joyce Grimble Fund - Unrestricted fund for the benefit of the Montgomery County community

The David and Sheridan Hadley Health and Wellness Fund - To provide support for nonprofit organizations promoting health and wellness, fitness and recreational activities within Montgomery County

The M. Gaildene and Stan Hamilton Fund - Unrestricted fund for the benefit of the Montgomery County community

The Darlene Harmon Early Childhood Education Fund - To provide support for early childhood education needs in Montgomery County

The Thomas and Mary Beth Harmon Fund - Unrestricted fund to benefit the Montgomery County community

The Jim and Bev Harpel Basketball Scholarship Fund - To provide scholarships to Montgomery County high school students who played varsity basketball

The Mary Lynn and Terry Harris Fund - To provide support to the South Montgomery School Corporation for their preschool program

The Virginia H. Hays and Will H. Hays Jr. Fund - To provide support to the James Whitcomb Riley Memorial Association to be used in the area of patient care for Montgomery County residents

The Carl F. and Margaret Henthorn Fund - Unrestricted fund to benefit the Montgomery County community

The Rex and Sandra Henthorn Fund - Donor advised fund

The Peggy Herzog Youth Volunteer Fund - To provide an award to the nonprofit Montgomery County organization nominating the youth volunteer of the year recipient

The Keith Hester Scholarship Fund - To provide scholarships to graduates of Southmont High School attending Purdue University pursuing study in Agriculture

The Roger and Judy Hildebrand Fund - Unrestricted fund for the benefit of the Montgomery County community

The Michael D. and Sally A. Hinkle Fund - Unrestricted fund to benefit the Montgomery County community

The Dennis and Dee Hohlbein Fund - Unrestricted fund to benefit the Montgomery County community

The Larry D. Servies and Wanda R. Hopkins Fund - Unrestricted fund for the benefit of the Montgomery County community

The Hoosier Heartland State Bank Fund - Unrestricted fund for the benefit of the Montgomery County community

The Connie Horner Fund - To benefit Montgomery County Free Clinic

The Ian Geoffrey Hudson Memorial Fund - To provide support to assist disabled Montgomery County children and their families

The Ora Hudson Trust Fund - To benefit the Montgomery County Free Clinic, Tuberculosis Foundation and agencies like Even Start

The John and Roberta Hudson Fund - Unrestricted fund for the benefit of the Montgomery County community

The Walter Hulet Fund - To provide for charitable and benevolent purposes throughout the city of Crawfordsville and Montgomery County, Indiana

The Richard and Nancy Inskeep Fund - To provide support for Montgomery County public elementary schools to benefit elementary school age children, and to support early learning education (ages 0-5)

The John and Ruth Isaacs Family Scholarship Fund - To provide scholarships for Montgomery County students

The Orval and Mildred Propst James Fund - To provide support for the Children's Services at the Crawfordsville District Public Library and the Montgomery County Habitat for Humanity

The Max W. Johnson Scholarship Fund - To provide scholarships for Montgomery County, Indiana students in the Purdue University School of Agriculture

The Max W. Johnson Fund to honor Mary Francis "Fran" Johnson - Unrestricted fund to benefit the residents of the Montgomery County community

The Van Johnson Scholarship Fund - To provide scholarships for graduates of South Montgomery High School

The Martin and Areta Siamas Kaitson Fund - To provide support to the Montgomery County Youth Service Bureau

The Brian and Cheryl Keim Family Fund - Unrestricted fund for the benefit of the Montgomery County community

The Jessica Keller Fund - For the James Whitcomb Riley Memorial Association to benefit Riley Hospital patients preferably from Montgomery County

The Aaron C. Kesler Future Firefighter Scholarship Fund - To provide support to Southmont Schools to benefit the Fire and Rescue CTE Program

The Crawfordsville Kiwanis Club Fund - Donor advised fund

The Kiwanis Club Pat Cline Scholarship Fund - To provide scholarships for Montgomery County students

The Cory Knecht Memorial Scholarship Fund - To provide scholarships to Crawfordsville High School students

The Payton Kobel Scholarship Fund - To provide scholarships to North Montgomery and Crawfordsville High School students

The Richard (Beck) and Elsie M. Lane Fund - To provide support to the Coal Creek Fire and Rescue for the New Richmond Fire Department to be used for training, equipment, and building maintenance and operations

The Harold and Doris Larsen Fund - To benefit the speech and hearing impaired of Montgomery County

The Grace Divine Law and Trust Fund - To benefit the Montgomery Adult Guardianship Services

The Lincoln Legacy Foundation Fund, Inc. - Unrestricted fund for the benefit of the Montgomery County community

The Dr. Byron N. and Vera Spencer Lingeman Fund - To benefit those needing medical help through the Montgomery County Free Clinic

The Pearl and Don Livingston Fund - Unrestricted fund for the benefit of the Montgomery County community

The Longview Tree and Greenspace Fund - To fund the creation and preservation of attractive urban forestry and green spaces within the city of Crawfordsville

The Drs. Paul and Mary Ludwig Fund - To provide assistance to indigent families of Montgomery County needing medical assistance

FUNDS M-P

The Mace Veterans Memorial Fund - To provide support to Mace Cemetery Association for lighting of the American flag

The Mag & Lil Fund - Unrestricted fund for the benefit of the Montgomery County community

The Joseph and L. Ann Malott Fund - Donor advised fund

The Hubert and Martha Massing Fund - Unrestricted fund for the benefit of the Montgomery County community

The Jim and Kim McBee Family Scholarship Fund - To provide scholarships for students of North Montgomery High School

The Jeff McClaskey Student Athlete Scholarship Fund - To provide scholarships for Montgomery County students who have participated in at least two sports in high school

The Mike McCord Scholarship Fund - To provide scholarships for students of Crawfordsville and North Montgomery High Schools

The Mike and Sheila McCormick Fund - Unrestricted fund for the benefit of the Montgomery County community

The Amy McFerran Fund - Unrestricted fund for the benefit of the Montgomery County community

The Paul and Irmgard McKinney Fund - To provide support in the areas of Arts, Education, and Senior Care

The Steve and Diane McLaughlin Fund - Unrestricted fund for benefit of the Montgomery County community

The Connie Meek Scholarship Fund - To provide a scholarship to students from Crawfordsville High School pursuing a degree in music

The Tom and Cynda Mellish Fund - Unrestricted fund for the benefit of the Montgomery County community

The Ron Melvin Memorial Scholarship Fund - To provide funding for scholarships to Crawfordsville High School students or Montgomery County home schooled students

The Phil and Judy Michal Fund - Unrestricted fund for the benefit of the Montgomery County community

The Mike and Rhonda Mitchell Family Fund - Unrestricted fund for the benefit of the Montgomery County community

The Montgomery County Community Foundation Building Maintenance Fund - To provide support to maintain the office building of the MCCF

The Montgomery County Community Foundation Scholarship Fund - To provide scholarships for Montgomery County students in memory of loved ones and friends

The Montgomery County 4-H Club Agency Fund - To provide support to Montgomery County 4-H, Inc

The Montgomery County 4-H, Inc Fund - To benefit Montgomery County 4-H, Inc. in its services to Montgomery County 4-H youth

The Montgomery County Early Learning Center Fund - To provide support to the Montgomery County Early Learning Center

The Montgomery County Free Clinic Agency Fund - To provide support to the Montgomery County Free Clinic

The Montgomery County Free Clinic Fund - To provide support to the Montgomery County Free Clinic

The Montgomery County Physicians Fund - Unrestricted fund for the benefit of the Montgomery County community, established and funded by Montgomery County physicians

The Montgomery County Retired Teachers Fund - Donor advised fund

The Montgomery County United Fund for You Agency Fund - To provide support to United Way in Montgomery County

The Montgomery County United Fund For You Fund - To benefit United Way in Montgomery County

The James Moore Animal Welfare League Fund - To provide support to the Animal Welfare League of Montgomery County

The Greg and Nancy Morrison Fund - Unrestricted fund for the benefit of the Montgomery County community

The Herbert and Genevieve Morrison Memorial Fund - To benefit the Wabash Avenue Presbyterian Church

The Herbert, Genevieve and Marian Morrison Fund - To benefit the Boys and Girls Club, Crawfordsville District Public Library, and Arts & Culture in Montgomery County

The Marian J. Morrison Crawfordsville District Public Library Fund - To provide support to the Crawfordsville District Public Library to be used for children and/or the visually impaired

The Marian J. Morrison Wabash Avenue Presbyterian Church Fund - To benefit Wabash Avenue Presbyterian Church

The Bradley and Suzanne Deur Mullendore Fund - To benefit individuals with neurological injuries and illnesses

The Muttgomery Pet Paws Fund - To provide support to the Animal Welfare League of Montgomery County

The New Richmond Community Fund - To provide support to the town of New Richmond

The Wade Nixon Fund - Unrestricted fund for the benefit of the Montgomery County community

The Thelma Biddle Nolte Scholarship Fund - To provide funding for scholarships to North Montgomery, Southmont and Crawfordsville High Schools

The North Montgomery Education Fund - To provide support to the North Montgomery School Corporation

The Nourish Fund - To provide support to the Nourish Backpack program

The Nucor Fund - Unrestricted fund for the benefit of the Montgomery County community

The Morris and Barbara Odle Family Fund - Unrestricted fund for the benefit of the Montgomery County community

The Gloria and Marvin Oliver Fund - Unrestricted fund for the benefit of the Montgomery County community

The Myron and Patsy Pattison Scholarship Fund - To provide scholarships for county students for the sophomore year in college

The James Patton Instrumental Music Scholarship Fund - To provide scholarships for county students pursuing study in instrumental music in college

The Michael L. and Karen A. Patton Fund - Unrestricted fund for the benefit of the Montgomery County community

The James G. and Patti J. Pearson Scholarship Fund - To provide funding for scholarships to Southmont graduates pursuing a college degree in elementary education

The Gail Moll Pebworth Fund - To provide funding to support the Sugar Creek Swim Club

The Dale and Linda Petrie Fund - Unrestricted fund for the benefit of the Montgomery County community

The Cole Petty Scholarship Fund - To provide scholarships for Southmont graduates

The Prudence Kimball Phillips Fund - To provide funding to support the Prudence Kimball Phillips Chemistry Award at Crawfordsville High School

The Plant Family Fund - Unrestricted fund for the benefit of the Montgomery County community

The Marty Pool Fund - Unrestricted fund for the benefit of the Montgomery County community

The Ford Purdue Penn Trust Fund - To benefit the United Way in Montgomery County

FUNDS R-S

The A.F. Ramsey Trust Fund - To provide care for the poor of Crawfordsville

The Ted and Betty Ratcliff Scholarship Fund - To provide scholarships for North Montgomery students

The Torey and Bethany Rauch Fund - Unrestricted fund for the benefit of the Montgomery County community

The Ernest and Diana Rhoads Scholarship Fund - To provide scholarships to Montgomery County high school graduates who demonstrate financial need

The Charles M. and Clella A. King Fund for Rice Cemetery - To provide funding for the care and maintenance of Rice Cemetery

The Jack and Dene Roberts Montgomery County Remedial Reading Fund - To promote competency in reading for elementary school children

The Amy C. Robinson Trust Fund - To benefit children in Montgomery County with cognitive disabilities

The Joe Robinson Trust Scholarship Fund - To assist an outstanding youth of color to continue graduate work in medicine or theology. Preference given to graduates of Wabash College or to Montgomery County, Indiana college graduates of other colleges or universities

The Camp Rotary Fund - To provide support to the Montgomery County Youth Camps, Inc.

The William and Amy Roth Fund - Unrestricted fund to benefit the Montgomery County community

The Anita Rugar Fund - Unrestricted fund to benefit the Montgomery County community

The Wayne Rush Scholarship Fund - To provide scholarships for North Montgomery students studying within the School of Agriculture at Purdue University

The Carrie Boswell Saunders Scholarship Fund - To provide scholarships to Crawfordsville High School graduates

The Coach Rick and Deb Schavietello Fund - Unrestricted funds to benefit the Montgomery County community

The Faye O. and Anna Winter Schenck Fund - To benefit Montgomery County citizens needing medical services

The Schoen Family Fund - To provide support to Darlington Forever Inc.

The Florence Schultz Trust Fund - To benefit non-specific charitable, religious, and educational entities in and around the city of Crawfordsville

The Clark and Nancy Sennett Fund - Unrestricted funds to benefit the Montgomery County community

The Florence and Lee Servies Scholarship Trust Fund - To provide scholarships for graduates of South Montgomery High School pursuing college degrees in the field of teaching

The John Siamas Shop with a Cop Fund - To provide support to the City of Crawfordsville to benefit the Shop with a Cop Program

The Virginia and John Sinclair Fund - To provide general support for the Montgomery County Community Foundation

The James G. and Susan Smith Fund - To provide seed capital to enhance the quality of life for the citizens of Montgomery County

The Joseph D. Smith Trust Fund - To benefit those with medical needs in Montgomery County

The Joseph and Clara Smith Scholarship Fund - To provide scholarships to Montgomery County high school graduates who demonstrate good character and excellent citizenship

The Solar Power to the People (in nonprofits, churches and other groups) Fund - To provide support to nonprofits in the areas of clean energy practices, primarily encouraging converting nonprofit organizations' buildings to solar energy

The Lester B. Sommer Landscape Fund - To provide Lester B. Sommer Elementary School and Wabash College with funds to plant flowering plants, shrubs, and replacement trees

The Southmont Education Fund - To provide support to South Montgomery School Corporation

The Amber Powers Sparks Scholarship Fund - To provide scholarships to students of Southmont High School

The Wilma S. and George M. Spencer Presbyterian Fund - To provide support to educational programs at Wabash Avenue Presbyterian Church

The St. Gonzaga Catholic Youth Fund - To provide support to the youth of St. Bernard's Catholic Church wishing to attend faith-based camps

The Kathleen J. Steele Park Fund - to provide support to the City of Crawfordsville to maintain the Kathleen J. Steele Park located in the 800 block of West Main Street, Crawfordsville, Indiana

The Kathleen and John Steele Fund for Crawfordsville Community Schools - To benefit the Crawfordsville Community School Corporation

The Kathy and John Steele Fund - Unrestricted fund to benefit the Montgomery County community

The Fred D. and Anna Faye Stevenson Scholarship Fund - To provide scholarships for a North Montgomery High School senior golf team member, a Montgomery County senior attending the First Christian Church of Crawfordsville and a Montgomery County Senior attending the First Baptist Church of Crawfordsville, IN

The Debra Kay Stonebraker Memorial Scholarship Fund - To provide scholarships to North Montgomery High School seniors from a single parent family

The Bob and Nancy Stwalley Charitable Trust Endowment Fund - To provide support to various nonprofit agencies in Montgomery County

The Sugar Creek Players Fund - To benefit the Vanity Theater

The Sunshine Vans Fund - To provide support for the City of Crawfordsville Parks and Recreation Department, specifically for the Sunshine Vans

The Stewart-Sweek Family Fund - Unrestricted fund for the benefit of the Montgomery County community

The Louis and Norma Swenke Fund - To provide support to the Crawfordsville K-9 program

The Louis and Norma Swenke Scholarship Fund - To provide support for a sophomore criminology scholarship

The Sheri Switzer Scholarship Fund - To provide a scholarship for a North Montgomery High School senior

FUNDS T-Z

The Bob J. Tandy Scholarship Fund - To provide a scholarship for a Southmont High School senior pursuing a college degree in the field of education

The Max K. Tannenbaum Trust Fund - To benefit the Montgomery County Historical Society and the Montgomery County Cultural Foundation. A portion of the fund is unrestricted to benefit the Montgomery County community

The Harold B. Taylor Memorial Fund - To provide support to Montgomery County 4-H, Inc

The John T. Taylor Charitable Fund - Unrestricted fund to benefit the Montgomery County community

The Karl B. Taylor Mental Health Fund - To provide support for mental health needs in Montgomery County

The Clyde Thomas Trust Fund - To provide cemetery arrangements for the graves of the Thomas family

The Bobbye and Claude Thompson Fund - Unrestricted fund to benefit the Montgomery County community

The Dr. Claude Thompson Fund - To provide support for the Montgomery County Free Clinic

The John and Sandy Tidd Fund in memory of Ernest and Anna Tidd and Joan and John Spray - Unrestricted fund to benefit the Montgomery County community

The Beverley J. Turner Fund in memory of John C. White - Unrestricted fund to benefit the Montgomery County community

The Red and Martha Vail Fund - To provide support to the Linden Carnegie Public Library

The Martha Fudge Vance Trust Scholarship Fund - To provide an award to a Crawfordsville High School senior for outstanding work in English composition

The Jerry and Dorothy Servies Vaughn Scholarship Fund - To provide scholarships to graduating seniors of Southmont High School

The General Lew Wallace Study & Museum Fund - To provide support for the General Lew Wallace Study & Museum

The Lew Wallace Study Preservation Society Agency Fund - To provide support to the Lew Wallace Study Preservation Society

The Homer C. Warren Family Trust Scholarship Fund - To provide renewable four-year scholarships each year to North Montgomery High School students

The Tom Warren Fund - Unrestricted fund to benefit the Montgomery County community

The Waveland Fund - To benefit the town of Waveland

The Waynetown United Methodist Church Fund - An agency fund to benefit the Waynetown United Methodist Church

The Don and Emma Lou Weliever Fund - To provide support for Darlington Forever, Inc. which benefits the town of Darlington

The David Wells Scholarship Fund - To provide a scholarship to a qualified senior science student at Crawfordsville High School

The Robert F. and Mary C. Wernle Fund - To benefit the Montgomery County Historical Society

The Wesley Thrift Shop Fund- To benefit women, children, and families in Montgomery County

The Libby Whitecotton Fund - To assist Montgomery County families who have children with special needs

The Mary Alice Davenport Williams Scholarship Fund in loving memory by her children Joanne, Jeanne, Ruth Ann and Thomas - To provide scholarships to graduating seniors of Southmont High School pursuing a music related field

The Mary Alice Davenport Williams Fund in loving memory by her children and grandchildren - To benefit the Southmont High School choir programs

The Leonard and Louise Winchell Fund - Unrestricted fund to benefit the Montgomery County community

The Wingate Community Fund - To benefit the town of Wingate

The Women of Wisdom Fund, Yesterday, Today and Tomorrow: honoring Rev. Chris Hotopp-Zachary, Mary Vi Leaming RN and Meda Lorton - To provide support for Montgomery County nonprofit organizations serving in the areas of human services, including children with disabilities and other youth, less fortunate citizens, and animal welfare

The Women's Legacy Fund - To benefit non-profit agencies which provide services to women and children of Montgomery County

The Women's Resource Center Fund by the Christian Union Ladies Aid - To benefit the Women's Resource Center

The Frances Wooden Park Fund - To provide support to the City of Crawfordsville to maintain the Frances Wooden Park located on West North Street, Crawfordsville, Indiana

The Damon C. and Bernice Seaman Wray Fund - Unrestricted fund for the benefit of the Montgomery County community

The Roland Brooks and Helen Johnson Wynne Fund - Unrestricted fund for the benefit of the Montgomery County community

The Youth Are Our Future Fund - To provide support for youth focused organizations and programs serving the youth of Montgomery County

The Youth as Resources Agency Fund - A program of the Youth Service Bureau to provide support for youth driven service projects within the Montgomery County community.

The Youth Service Bureau Agency Fund - To benefit the Youth Service Bureau

The Youth Service Bureau Fund - To provide support to the Montgomery County Youth Service Bureau

The Jarrod and Crystal Zachary Fund - Unrestricted fund for the benefit of the Montgomery County community

PATHWAY PLANS

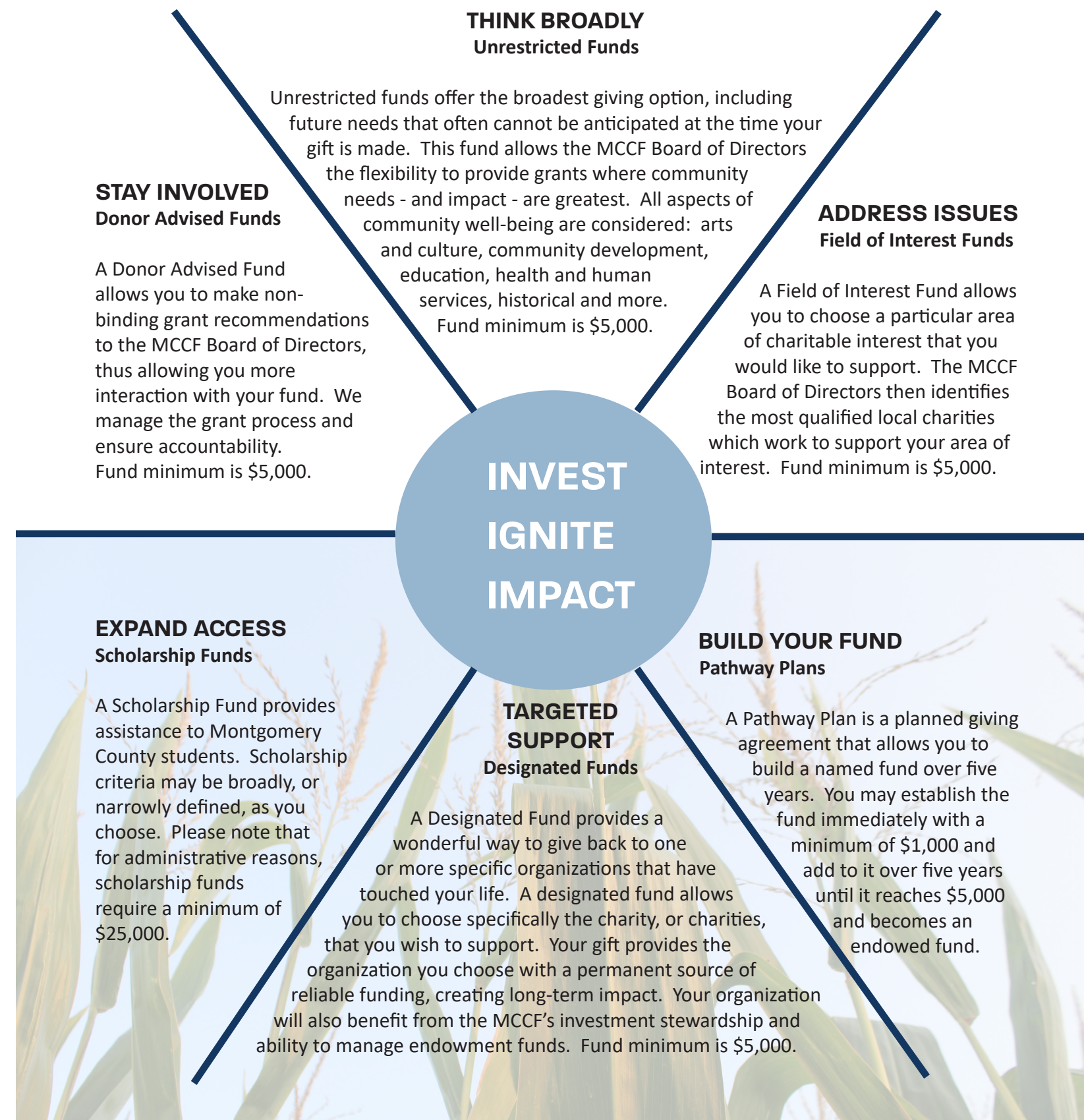
- The Russell Freeman Pathway Fund
- The Ron Hatke Agribusiness Scholarship Pathway Fund
- The Montgomery County Hearing Aid Assistance Pathway Fund
- The Michael F. Moss Memorial Scholarship Pathway Fund
- The Mullendore Scholarship Pathway Fund
- The Rhoads Family Scholarship Pathway Fund
- The Ed Stuffle Montgomery County Track & Cross Country Scholarship Pathway Fund

PASS THROUGH FUNDS

Pass Through Funds are a temporary charitable vehicle where all assets are available for immediate distribution to support specific charitable purposes, unlike a permanent endowment fund.

- AWL Shelter Capital Campaign Fund
- Camp Milligan Pass Through Fund
- Childcare Coalition Pass Through Fund
- Darlington Community Center Pass Through Fund
- Disaster Assistance Pass Through Fund
- Early Learning Center Pass Through Fund
- Hoosier Heartland State Bank Scholarship Pass Through Fund
- Masonic Temple Pass Through Fund
- Montgomery County Drug Court Pass Through Fund
- Montgomery County Family Recovery Court Pass Through Fund
- Montgomery United Police Canine Association Pass Through Fund
- Town of New Richmond Pass Through Fund
- Veterans Treatment Court Pass Through Fund
- Wingate Trails Pass Through Fund

TYPES OF FUNDS



Ready to start a fund?

Contact MCCF at 362-1267 or visit our office for more information.



Gifts in Memory

Jerry Abbott

Harold and Linda Carpenter



Mary Ann Adams

Mary Ann Adams

Betty Adams
Ray and Beth Adams
Anonymous
Sean and Tammy Carey
Ron and Trudy Dickerson
Jeff and Nancy Effinger
Lathan and Mary Florence
Mike and Robin Fruits
Mike and Terri Grant
Darcie DeBoer Green
Brenda Holscher
Indiana Farm Bureau Insurance
Rocky, Krista, and Kade Kobel
Aaron and Amy Mattingly
Darrell and Tresha Meadows
Montgomery County Farm
Bureau, Inc.
Rock Point Church
Donna Strand
Mark and Karla Vaught
John and Denise Walker
Kory and Ashley Warren
Mike and Peggy Whitacre

Wilma Jeanne Agee

Jeff and Sue Lucas

Robert R. Anderson

Kevin and Andra Storms

Bud Arnold

Tony and Cindy Cosenza
Conrad and Judy Harvey
Don and Jane Livingston
Jim and Lexa McCampbell
Chuck Sommer

Kathryn Arvin

Carole Pendleton

Bill Ashbaugh

Adrienne Ashbaugh
Joe Ashbaugh

Janice "Janni" Barnett

Ken and Terri Carpenter
Bob and Joni Flynn
Dan and Denise Maxwell
David and Jeanette Shelton
Sue Spencer and Family
Mike and Peggy Whitacre

Sherry Barr

Tracey and Sharon Barr

Rose Mary Duncan Barragree

Donald and Vicki Cain

Jennifer Beemer

Catherine Stevenson Beemer

Peggy Behr

Ellen Ball
Rodney and Lisa Greene
Lakeside Service Group
Dale and Donna Swick

Joe and Vera Bell

Loyal and Diana Bell

Dr. Sam Benjamin

Harold and Linda Mennen
Jack and Beverly Wyatt

Linda Bentley

CHS Class of 1962

Roberta Hunt Berry

Chuck Sommer

Don and Mary Alice Bickel

Mark and Gus Bickel

Missie Bickel

Mark and Gus Bickel
Edward and Patricia
McDeavitt
Makayla Oppy
Christina Perry

John Blair

Byron and Karen Thada

Brian Bowman

Andrew and Amy Smithka

Marjorie Bowman

Tony and Cindy Cosenza

Jack and Dixie Boyles

Dan and Beth Strasser

Betty Anderson Branstetter

Kevin and Andra Storms

James and Kathryn Branstetter

Diana Binford

Kathryn Branstetter

Harold and Linda Carpenter
Phil and April Littell

Sandra Branstetter

Wayne Branstetter
Marty Pool

Ana Bravo

Anna Bravo-Moore and
Jamie Moore

Mary and Irving Bressie

Joyce Fitzwater

Bill Burget

Bill and Judy Williams

Pamela Bush

Durham Home Staff,
Residents, and Executive
Staff

Susan Cantrell

Jack and Guyanna Spurway

Paul David Carey

Tony and Cindy Cosenza

Laura Carlson

Cal and Marsha Black

Diana Catterson

Jane Leibenguth

Delbert "Deb" Cedars

John and Betty Culley
Marty Pool

John Childress

Marvin and Gloria Oliver

Connie Cleek

Tony and Cindy Cosenza

Dale and Pat Cochran

Loyal and Diana Bell



Dale Cohee

Dale Cohee

Anonymous
William and Becky
Branstetter
Steven Burkle
Cain Crew
Mike and Marilyn Cohee
Ron, Dawn, Bran and Melissa
Cunningham
Gary and Karen Dale
East Union Estates
Barbara Hampton
Brent and Lorianne Hampton
Brent and Joy Harlos
Brian and Cheryl Keim
Lakeside Book Company
Jack and Susie Larson
Mike and Brenda MacOwan
Phil and Sherry Mahoy
Family of Larry McCance
Darrell and Tresha Meadows
Carolyn Morris
Kyle and Keira Perkins
Patti Perkins
James and Christine Sheetz
Mary Sloan
Jerry and Cindy Smith
Donna Strand
Karen Venis
Ryan and Andrea Venis
John and Denise Walker
Donna Walton
Washington Manor
Apartments
Weliever Family: Charles and
Roberta, Bob and Cathy,
Betty and Sam, Mary Lou,
Donna and Dean, Nancy
and Jason, and Susie and
Chris
John and Marsha Wells

Greg Conrad

Alice Conrad

Wendel Cooprider

Morris Odle

Bob Coudret

Mark Bickel
Jack and Beverly Wyatt

Dwight & Mary K. Cox

Louanna Remley

Hank Coyle

Jim and Mary Coyle
Julie Coyle
Tom and Laurie Coyle
Lonnie Therber

David Crumm

Rusty and Kathy Carter

Paul Curtis

Chuck Sommer

Ann Davis

John and Betty Culley
Chuck Sommer

Fred L. Davis

Ron and Trudy Dickerson
Brian and Cheryl Keim
Greg and Nancy Morrison

Morris & Norma Davis

George and Brenda Hassler

Paula Davis

Ron and Trudy Dickerson
Brian and Cheryl Keim
Mary Beth Keim

Betty Dawald

Connie and Larry Motz

Randy Deneau

Ron and Trudy Dickerson
Terry Lawrence

Jim Denman

Andy and Karen Biddle
Tom and Robyn Henderson

Lee Detchon

Chuck Sommer



Gary Dickerson

Gary Dickerson

Frey, Loy, Morgan and
Johnson
Chad and Julie Hess
Rick and Pat Jackson
Danny and Mary Jane
Meadows
Darrell and Tresha Meadows
Greg and Nancy Morrison
Paula Olson
Denise Schultz
Mark and Ruth Smith
Mick and Marta Sweek
Dan and Kelly Taylor
Terry and Kathy Wear

Christopher Doemel

David and Sheridan Hadley
Austin and Lucy Brooks

Nancy Doemel

Austin and Lucy Brooks
Ann Kohler
Jack and Guyanna Spurway

Julie Doyel

John and Carolyn Doyel

Judy Eads

Don and Jane Livingston

Jack & Rae Eastman

Heinold Family

Tommy Edwards

Sue West

Earl & Ruby Elliott

Dorothy Hudson
Jon and Patty Sommer

Earl Elliott

Ruby Elliott
Paul Moehling

Ruby Elliott

Jim and Sarah Dicks
Conrad and Judy Harvey
Rex and Sandy Henthorn
Steve Loy
Sue Meyer, Brad Balch, and
Scott Balch
Mike and Rhonda Mitchell
Paul Moehling, Susie
Moehling and Dr. Shirl
Barker
Kristie and Gaylon Ross
Dotti Sheehan
Chuck Sommer
Donna Strand
Dan and Kelly Taylor
Mike and Jackie Vaught
Lee and Jeanie Walden
Bill and Judy Williams

Don Ellis

Arni's of Crawfordsville

Michael Evans

Don and Amy Cochran

Kenneth "Rick" Eyler, Jr.

Tony and Cindy Cosenza

Lizbeth Sue Farrar

Chuck Sommer

Robert Ferling

Daryl and Mary Helen Fry

Sherry Fields

Ron and Trudy Dickerson
John and Cheryl Luzader
Waynetown High School
Class of 1964

Jim Fitzwater

Kyle and Ashley Thompson

Harland Flint

Brian and Cheryl Keim

Harry Flowers

Tony and Cindy Cosenza

Tom Foreman

CHS Class of 1962

Randy Francis

Chuck Sommer

Ward Fritzen

Marvin and Gloria Oliver

Rex Fultz
Andy and Karen Biddle

Kent Gambrel
Gerry Coffenberry
Tom and Susie Gineris

Randall Garrett
Ellen Ball
Andy and Karen Biddle
Rusty and Kathy Carter
Ron and Trudy Dickerson
Dennis Krause
Lakeside Book Company
Montgomery County
Strawberry Festival
Committee
Jack and Beverly Wyatt

Floyd & Marguerite Geiger
Marvin and Gloria Oliver

Mary E. German
Jill German

Jessica Gibson
Jake and Kelli Gibson

Gus & Nola Gineris
Jim and Nancy Gineris

David Glass
Marty Pool

Dale Goff
Ron and Trudy Dickerson

Paula Goff
Harold and Linda Mennen

Larry Grimes
Jerry and Sue Whalen

Margaret Groves
Dan and Kelly Taylor

Nathan Hadley
David and Sheridan Hadley
Roger and Judy Hildebrand

Roger Hamilton
Gerry Coffenberry
Nancy C. Cox
Tom and Susie Gineris

Bob Hampton
Barbara Hampton

Kathy Hanna
Harold and Linda Carpenter
Ron and Trudy Dickerson

Mary Lynn & Terry Harris
Chuck Sommer

Elizabeth Ann Hatfield
Ellen Ball
John and Betty Culley
Wesley Thrift Shop



Ron Hatke

Ron Hatke
Mary Ann and Steve Allen
Randy and Tammy Allen
Anonymous
Betty Armstrong and Linda Hitchings
B&R Fire Protection
Madonna Bailey
Ellen Ball
Rex and Linda Ballard Family
Loyal and Diana Bell
Andy and Karen Biddle
Gary and Ronna Bohlander
David and Rachel Brown and Kenn and Sandy Clark
Linda Brown
Nancy Buckles
Charles L. Bunnell and Sherri Bunnell
Ken and Terri Carpenter
Dennis and Barb Carrell
Joe and Debbie Carter, Jenny and Tim Saylor and family,
Casie and Mike Allen and family, Chelsea and Marc Roberts and family
Richard and Sandra Clouser
David and Suzanne Coffing
Jason, Carrie, Colby, and Kelby Coon
Cracker Barrel #70
Dale and Shirley Crum

Ron Hatke (continued)
Jerry and Mary Ann Day
Jon and Nicole DeSmet
Paul and Marcia DeSmet
Bob and Robin Devault
Jim and Sarah Dicks
Diane Dillard
Darrell Dyson
Karyn Elder
Donna Fathauer
Scott and Cynthia Ferling
Ross and Marlene Foxworthy
Jeff and Lee Ann Fruits and family
Keith and Karen Fruits
Frye Family
Thelma Furr
Kathy and Jim Gary
Don and Diana Gould, Sandy Timmons, Susie Irvin, Patty Kirts, Carla Brady, Linda Taylor, Diana Bell, Diana Hall
Jack and Joyce Grimble
Dan and Kathy Hampton
Dennis and Vickie Hatke
Louis and Debra Hatke
Brian and Beth Hedge
Hodgen Farms: Abe, Shirley, Paul and Jennie Hodgen
Gerald and Kathi Hole
Brenda Holscher
John and Brenda Horn
Roger and Sharon Johnson
Neil and Pam Karle
John and Pam Katsimpalis
Gary and Jackie Kerkhoff
Tom and Cindy Klepfer
John and Candi Kruse
Jack and Suanne Larson
Craig and Kathy Leafgreen
Jane Leckrone
Jane Leibenguth
Kathy Lidester
Phil and April Littell
Greg and Jayne Lough Family
Jeff and Beth Lough
Steve Loy
Bill and Denise Matthews
Bruce and Anne McClamroch
McGrady Farms
Renee McGrady
Russ and Debbie Meuser
Dick and Brenda Miller
Montgomery County Farm Bureau, Inc.
Montgomery County Sheep Association
Daniel and Colleen Moran

Ron Hatke (continued)
Greg and Nancy Morrison
Randall Nagel
Morris Odle
Scott and Karin Odle
Paul and B.J. Parry
Brenda Payne
Richard Pond
Brenda Powell
Florida Friends on the Beach
Dennis Roberts
Rock Point Church
Chuck Rosen and Diana Hester
Clint and Lindsey Rosen
Dan and Shirley Ross
Eric and Angie Runyan
Vicki Rush
Warren Rush
Dennis and Amber Rusk
Roseann Ryle
Nick and Jo Shaw
Joesph and Nancy Shoemaker
Sam and Sandra Simmons
Diana Simpson
Brian and Rhonda Smith
Larry Smith
Mark and Susan Smith
Billy and Janet Stonecipher
Tim and Terry Surber
Dan and Kelly Taylor
Tina Townsend
Mark and Karla Vaught
John and Denise Walker
Marc and Kelli Welch

Lisa Ann Heath
Terry and Paula Reed
Denise Booher Walker

Herman
Community Member

Jack and Rita Heuss
Jerilyn Yerkes

Jeff Heuss
Jerilyn Yerkes

Karen Elise Hill
Brad and Kathryn Eads

Carol Hockersmith
James D. Collier
Roger and Patti Johnson
Phil and Matha Littell
Jeff and Sue Lucas



Dale Hockersmith

Dale Hockersmith
Lois Amabisca
Loyal and Diana Bell
Phil and Farzaneh Boots
Harold and Linda Carpenter
Jan Cash
Gerry Coffenberry
Covered Bridge Pioneer Association
Buzzy Delano
Ron and Trudy Dickerson
Billy and Sheena Ferguson
Daryl and Mary Helen Fry
Dan and Martha Goff, Tom and Connie Harshbarger, Roger and Sandy Harshbarger, Scott and Carol Miles
Tom, Connie, and Mike Harshbarger
Bob and Nancy Hawkins
Hawkins Water Tech., Inc.
Peggy and Tom Hedrick
Dave and Joyce Laughlin
Norman and Geneva Long
Mary Jane McGinnis
Don, Bonnie, Paula, Vick, Tim, Beth, Jo, Paul, and Djene
Eric and Stacey Murphy
Betty Norman
Larrie and Pat Patton and Family
S&K Shelton Farms
Tanner Insurance, Inc.
Dan and Kelly Taylor
Danny and Patricia Wickholm

Robert "Bob" Hodges
Jerry and Sue Whalen

Charles Homsher
Gary and Terri Behling
Andy and Karen Biddle
Jim and Lexa McCampbell
Chuck Sommer

Ron Horn
Loyal and Donna Bell

Connie Horner
Michael and Diane Beemer

Ian Hudson
Summer Ervin
Marcus and Helen Hudson
Andrew and Amy Smithka

Ramona Pearl Spencer Hunsicker
Morris Odle

Russell Dale Hunsicker
Morris Odle

Courtney Hunter
Tony and Cindy Cosenza

Stephen "Bud" Hutchens and his dog Bogart
Don and Amy Cochran
Your Arni's Family
Ken and Terri Carpenter

Rosemarie Hutcheson
Barb Wilson and Pam Myers

George Inskeep
Richard and Nancy Inskeep

Orval & Mildred James
Bill and Nancy Carpenter
David and Sara James

Dave Johnson
Mark and Dorothy Barclay
Judy Ronk

Emily K. Johnson
Craig and Diane Green

Michael Johnson
Kyle and Ashley Thompson

Van Johnson
Tom Adams
Mark and Dorothy Barclay
Chad and Amy Johnson
Judy Ronk

Jerry Kahle
John and Brenda Horn and family

Jessica Keller
Jon and Patty Sommer

Cory Knecht
Jerry and Sharon Knecht
KnepCo Equipment & Services, LLC
John and Cathy Qualio

Glenn & Gretchen Knecht
Lonnie Therber

Candy Knoy
John and Denise Walker

Payton Royce Kobel
Jim and Chris Amidon
Arni's of Crawfordsville
Farzaneh Boots
Brainlabs USA, LLC
Bill and Debbie Calder
Central Indiana Rubber Products, Inc.
Jason and Shelley Clouser
Jim and Jerri Fitzwater
Don and Diana Gould
Michael Heinold Family
Hoosier Heartland State Bank
Wendy Hoke
Brenda Holscher
Derrick and Niki Hutson
Kaden Kobel
Rocky, Krista, and Kade Kobel
Bob Martinez
Dennis Maxwell
Dave and Cheryl McClaskey
Eric, Julie, Jett, Seth, and Peri McClaskey
Kerrie McClaskey
Greg and Nancy Morrison
Muffs and Tails
Jorge and Lindy Nakao
Devan Plant
Leslie Pyle
Torey and Bethany Rauch
Kyle and Ashley Thompson
Town and Country Homecenter
Tri-County Bank & Trust
U-Rent It Center
Vaught Electric, Inc.
Lee and Jeanie Walden
Kory and Ashley Warren
Mike, Kim, Kai and Kaleb
Warren and Judy McDonald
Bob and Cathy Weliever
Karen West
Dave Wilson Farms
Zippy Lube

Diane Kreisher
Ellen Ball
Gary & Terri Behling
John & Betty Culley
Chuck Sommer

Jill LaFollette
Kevin & Andra Storms

Connie Lark
Mick & Marta Sweek

Joseph Lauderbaugh
Phil & Matha Littell

Paul Laursen
Gerry & Donna Coats
David & Sheridan Hadley
Chuck Sommer

Charles Lee
Heinold Family

Kenneth Lee
Heinold Family

Carsten Lemkaw
Ken & Ruth Ann Newnum

Gary Lepper
Ron & Trudy Dickerson

Royal Lighty
Lew Wallace Study
Preservation Society Inc.



Don Livingston

Don Livingston
Anita Arnold
Lawrence & Glendia Beck
Andy & Karen Biddle
Nancy Bowes
Austin & Lucy Brooks
Rodger & Betty Buck
Phil & Karen Campbell
Rusty & Kathy Carter

Don Livingston *(continued)*
 Carol Ellis
 Scott and Cynthia Ferling and family
 Dan and Marj Froedge
 Keith and Karen Fruits
 Daryl and Mary Helen Fry
 Tom and Susie Gineris
 Kyle and Erin Gobel
 Jack and Joyce Grimble
 Dan and Stacey Guard
 David and Sheridan Hadley
 Sue Harmon
 Monty and Sherry Harris
 Thomas and Connie Harshbarger
 Rex and Sandy Henthorn
 Kurt and Carol Homann
 Rex and Kathy Hoskins
 Betsy Johnson
 Patricia Kennedy
 Rita Kirkpatrick
 Lakeside Book Company
 Gene and Joyce Ledgerwood
 Phil and April Littell
 Steve Loy
 Mike and Harriet Meade
 Judy Michal
 Kay Nannet
 Ken and Ruth Ann Newnum
 Lynn and Nina Nixon
 Marty Pool
 John and Maurine Roadruck
 Vicki Rush
 Dennis and Amber Rusk
 Shad and Sara Schenck
 Tim, Jana, and Beau Secrist
 Mary Carolyn Stevenson
 Lowell and Donna Stockdale
 Kevin and Andra Storms
 Dan and Kelly Taylor
 Creed and Shelby Tolin
 Gary and Maribeth Van Gorden
 Melvin and Lois Vance
 Lee and Jeanie Walden
 Yeager Family

Sue Locker

Bridge Club
 Crawfordsville Schools
 Transportation Dept.
 Kathy Steele

Mike Lohorn

Paul Moehling

Brad Lough

John and Carolyn Doyel
 Abby Lough and Family
 Amy Lough

Spencer Lough

John and Carolyn Doyel
 Abby Lough and Family
 Amy Lough

Coach Lowe

Jennifer Lowe

Jacki Loy

Jerry and Marsha Baumgartner
 Phil and Farzaneh Boots
 Dennis and Karen Brooks
 Michael and Suzanne Bunal
 Kenny Cain
 Rusty and Kathy Carter
 Tony and Cindy Cosenza
 Randy and Jackie Denhart
 Tom and Susie Gineris
 Mike and Terri Grant
 Dan and Stacey Guard
 Jane Hadley
 Dave and Libby Hirschy
 Marc and Helen Hudson
 Richard and Linda Huey
 Dick and Judy Hunsicker
 Gary and Teresa Huxhold
 Fred and Lynne Johnson
 Tom and Nancee Kinghorn
 Dean and Jodie Laffoon
 Rodney and Janie Lautzenheiser
 Craig and Kathy Leafgreen
 Jim and Rhonda Lee
 Rick and Sharen Linn
 Don and Jane Livingston
 Vicki Lutes
 Mike and Karen Martin
 Mark and Kathy McClamroch
 Wayne and Sue McCutchan
 Paul Moehling
 Brian and Michele Parker
 Marty Pool
 Doug and Cindy Reith
 Donald and JoAnn Russell
 Chuck Sommer
 Rick and Sue Sprunger
 Lowell and Donna Stockdale

Jane Rahn Maxwell

Dick and Sandy Clouser

Grant McBee

Greg and Nancy Morrison
 Morris Odle

Kim McBee

Steve and Kari Dueball
 Rex and Kathy Hoskins

Kim McBee *(continued)*

Jim McBee and Margaret Howden
 Mark and Karla Vaught

Errol John McBride

John and Denise Walker

David McCafferty

David and Sheridan Hadley
 Chuck and Alice Harpel
 Marcus and Helen Hudson
 Marcus and Helen Hudson
 Chuck Sommer
 Jack and Beverly Wyatt

Jeff McClaskey

Bob and Joni Flynn
 Chad and Julie Hess
 MAC Annual Golf Outing
 Kerrie McClaskey family
 Bob and Cathy Weliever

Frances "Fifi" Seibert McClellan

Howard Miller

Mike McCord

Kevin and Shari McCord

Bob McDonald

Mike, Kim, Kai, and Kaleb
 Warren and Judy McDonald

Richard McDonald

Ellen Ball

Connie Meek

Crescendos Choral Club

Gary & Connie Meek

Susan L. Adams

Ron Melvin

Darin and Paula Hutson

Phil Michal

Judy Michal

Lester Miles

Ron and Trudy Dickerson

Mitch Miller

Ron and Trudy Dickerson

Dale & Clara Lou Milligan

Susan Rosen

Dale & JK Milligan

Andrew and Amy Smithka

Katherine Boling Milligan

Betsy Johnson

Morris Mills

Andy and Karen Biddle
 Craig and Catherine Burkhart
 Dennis and Sally Coons
 John and Betty Culley
 Conrad and Judy Harvey
 Phil and Matha Littell
 Steve Loy
 Jim and Lexa McCampbell
 David Michel
 Chuck Sommer
 Byron Thada

Tom Mitchell

Boys & Girls Club Board of Directors

Thomas Moore

Sue D. Meyer, Brad Balch, and Scott Balch

Karl Henry Moser

Phil and Matha Littell
 Morris Odle

Mary Joan Hunsicker Moser

Phil and Matha Littell
 Morris Odle

Mike Moss

Becky and Rodger Buck
 Rodger and Betty Buck
 Christine Everett
 Rex and Sandy Henthorn
 Hannah Littell

Danny Myers

Nancy C. Cox
 Steve Loy

Gary Myers

Nancy C. Cox

Raymond & Ann Myers

Nancy C. Cox

Tim Nannet

Rusty and Kathy Carter

Drew Neal

Brent and Lorianne Hampton

Mary Nesbitt

Tom and Susie Gineris

Wade Nixon

Tracy and Cindy Budd
 Gerry Coffenberry
 Karen and Dick Ristine

Barbara Jean Hunsicker Odle

Morris Odle

Jane Odle

Morris Odle

Lee Allen Odle

Morris Odle

Melba Irene Pence Odle

Morris Odle

Rex E. Odle

Morris Odle

Raymond & Marie Oliver

Marvin and Gloria Oliver

Our Parents

Mike and Sheila McCormick

James Patton

Marilyn Patton
 Stan Patton
 Steve and Cheryl Sharp

Randy Perry

Edward and Patricia McDeavitt

Prudence Phillips

Estate of David A. Phillips

LaDawn Priebe

Ellen Ball
 Harold and Linda Carpenter
 John and Betty Culley
 Phil and Matha Littell
 Mark and Karla Vaught

Bill & Lois Priest

Denny Priest

Theron Priest

Mark Priest

Lidia Quezada

Anna Bravo-Moore and Jamie Moore

Chadd Quigg

Linda Law

Francis Quigg

Linda Law

Ruth Quigg

Linda Law

Marvin Ramsay

Joe Morrison, Mel Vance, Ed Hanon, Matt Getz, Andy Biddle, and Jones

Shirley Redden

Gene and Linda Redden
 Brian and Rhonda Smith

Theresa Joan (Hedge) Redmon

Ellen Hedge

Bev Reed

Don and Jane Livingston

Jordan Reed

Dennis and Lisa Gentry
 Terry and Paula Reed
 Barry and Marcia Rhoads

Wilma Reed

Terry and Paula Reed

Ricky Rescigno

Dick and Sandy Clouser
 Kyle and Ashley Thompson

Ernie & Diana Rhoads

Barry and Marcia Rhoads
 Terry and Paula Reed

Tyke Rice

Phil and Karen Campbell
 Jack and Joyce Grimble

Rosie Richardson

Paul and Marilyn Janzaruk

Mary Ann Riddle

Kyle and Ashley Thompson

Eric Lee Risner

John and Denise Walker

Richard O. Ristine

Jack and Guyanna Spurway

Alice Landis Rogge

Anne Rogge McClamroch

Jim Rosen

Ken and Terri Carpenter
 Tom and Susie Gineris
 Jack and Joyce Grimble
 Don and Jane Livingston
 Steve Loy
 Kevin and Andra Storms and family
 Mel and Lois Vance

Loretta Ross

Bret and Lisa Petty

Don Roth

Chuck Sommer
 Jack and Beverly Wyatt

Kathryn Rush

Lee and Jeanie Walden

Wayne Rush

Chad and Courtney Buckles
 Vicki Rush

Carrie Saunders

Anonymous
 Jeff and Amanda Bannon
 Jerry and Bev Bannon
 Joe and Phyllis Boswell
 TJ and Nicole Boswell
 Thomas Coursey
 Chrystal Eltz
 Cammie French
 Sean and Kelly Gerold
 David and Stacey High
 Derek and Anna Johnson
 Jeff and Debbie Justice
 Minnette Family
 Brian and Cathy Norman
 Mac and Gloria Petty
 Mary Jo Reed
 Angie Runyan
 Rex and Brandy Ryker
 Steven Stewart
 Peyton Suiter
 Scott and Jacquie Voliva
 Charlie and Leslie Warren
 Dan, Judy, and Rhett Welliever
 Jack and Molly Whitecotton

Carrie Saunders *(continued)*

Greg and Sarah Woodsmall
 Shelby Woodsmall

Jeff Scaggs

Alice Conrad

Sara Schavietello-March

Bickel Family
 Ron and Trudy Dickerson
 Jack and Joyce Grimble
 Jennifer Lowe
 Connie and Larry Motz
 Anita Rupar
 Tony and Carolyn Schavietello
 Dan and Kelly Taylor
 Kyle and Ashley Thompson
 Dorothy, Tommy, and Alan Vick

Evelyn S. Scott

Steve Loy

James "Jim" Servies

Ellen Ball
 Jack and Joyce Grimble
 Rita Locker

Violet Shahan

Dirk and Cathy Caldwell



Betty Sheets

Betty Sheets

Ellen Ball
 Mark Bickel
 CHS Class of '85 Friends:
 Rich, Kevin, Louise, Anne,
 Stacy, Susan, and LeAnne
 Rusty and Kathy Carter
 Chaffin Family
 Roger and Janet Cline, Mike
 and Cathy Rule, and Pat
 Mundell
 Gerry and Donna Coats
 John and Betty Culley
 Barbara Easterling
 Monty and Sherry Harris
 Rex and Sandy Henthorn
 Doug and Shannon Hudson

Betty Sheets *(continued)*

Terry Lawrence
Jane Leibenguth
Brenda Lovold
Judy Michal
Jeffrey Nelson
Marty Pool
John and Kim Roberts
Dave and Jane Rule
Larry and Judith Rule
Jim and Anne Sexton
Chuck Sommer
Kathy Steele
Ruth Rule Valley Family
Jack and Beverly Wyatt

Tom Sheets

Lonnie Therber

Doug Sims

Debra Swearingen
Rodger and Debbie Winger

John Skomp

Ann Skomp and family

Clara Smith

Mark and Susan Smith
Dave and Donna Church



David Smith

David Smith

Patricia Adams
David and Karen Barker
Nancy Buckles
Harold and Linda Carpenter
Terri and Ken Carpenter
Christ's Church in Bowling Green
Dave and Donna Church
Ron and Trudy Dickerson
Bill and Robin Lawter
Mark and Kathy McClamroch
Terry and Paula Reed
Louanna Remley, Max E. Cox
family, Gary and Vicki Cox,
Mike and Sheila Cox, Melinda
Irby, Felisia and Jim O'Bold,
and Scott Cox

David Smith *(continued)*

Marcia and Barry Rhoads
Mark and Susan Smith
Terry Smith

Earl Smith

Brian and Rhonda Smith

Jannah Smith

Robin Fruits

Joe & Clara Smith

Louanna Remley

Eatha Sommer

Anita Arnold
Paul and RuthAnn Bartlett
Jon and Anne Dantzig
Jane Leibenguth
Steve Loy
Jon and Patty Sommer

Amber Sparks

Joe and Pam Jeffries

**Wilma & George
Spencer**

George and Judy Spencer

John M. Stephens

Gail Stephens

Patsy Stephens

Ron and Trudy Dickerson
Ruth Hallett
Chad and Julie Hess

**Fred & Anna Faye
Stevenson**

Alan and Caroline Rush

Fred Stevenson

Cathy Beemer

Jessie Stewart

Matt and Glenda Nice
Molly and Mark Weaver and
family, Suzanne Sauer (The
Miller Girls)
Chuck Sommer
Esther Wiatt

Debra Kay Stonebraker

Dirk and Cathy Caldwell
Mary Stonebraker

J.R. Stonebraker

Tom and Robyn Henderson

Erin Rebecca Storms

Kevin and Andra Storms

Don Swearingen

SixSix Apparel
Debra Swearingen

Dallas Switzer

Chuck Sommer

Jane Anderson Switzer

Andra Anderson Storms,
Chuck Anderson, Peggy
Anderson Whitacre, and
Jack Anderson
Kevin and Andra Storms
Mike and Peggy Whitacre

Sheri Switzer

Mary Lou Endres
North Montgomery Middle
School
Jim Switzer
Adam and Jess Welcher

Bob J. Tandy

Sue Tandy

Barb Taylor

Mark Bickel
Linda Calvert
Mary Beth and Erik Keim
Chuck Sommer
Donna Strand
Bill and Judy Williams

Beth Whalen Tharp

Jerry and Sue Whalen

Linda Therber

Lonnie Therber

Arlie Thompson

Gene and Linda Redden

**Claude & Bobby
Thompson**

Chuck Sommer

Mark Todd

Daryl and Mary Helen Fry

Tom Todd

Daryl and Mary Helen Fry

Delores Torrence

Jack and Beverly Wyatt

Sue Totheroh

Tom and Susie Gineris
Jennifer Lowe

Gloras & Dan Traylor

Dora Garrett

Richard Tunin

Ken and Ruth Ann Newnum

John & Rosemary Turchi

Lonnie Therber



Tom Twarek

Tom Twarek

Terry Lawrence
Gary and Terri Behling
Bob and Peggy Behr
Delaney Behr
Andy and Karen Biddle
Nancy Bowes
Shirley Burd
Crawfordsville Community
Schools Board of Trustees
John and Betty Culley
Barbara Easterling
Fred and Jean Fuhrmann
IER Fujikura, Inc.
Shannon and Deb Ingram
and family
Stuart Jansen and Ann Cassidy
Charlotte E. Lingen
David Michel
Michael and Pauline O'Toole
John and Kim Roberts
Rex and Brandy Ryker
Jerry and Cindy Smith
Chuck Sommer
Kathy Steele
Gary and Pat Stull
Byron and Karen Thada
Teresa Titus
Michele Turinsky
Gregory and Natalie Twarek
John and Denise Walker



Gordon Vick

Gordon Vick

Clarence and Doris Carter
Jack and Joyce Grimble
June Kendrick
Vicki Rush
Rick and Debbie Schavietello
Dan and Kelly Taylor
Kyle and Ashley Thompson

Greg & Kathy Warren

Mike, Kim, Kai, and Kaleb
Warren and Judy McDonald

Tom Warren

Dick and Sandy Clouser
Richard and Sandra Clouser
Paul and Denise Swearingen

Harold Weliver

Ron and Trudy Dickerson

Dave West

Arni's of Crawfordsville
Bill and Debbie Calder
Central Indiana Rubber
Products, Inc.
Jim and Jerri Fitzwater
Don and Diana Gould
Hoosier Heartland State Bank
Wendy Hoke
Rocky, Krista, and Kade Kobel
Bob Martinez
Dennis Maxwell
Dave and Cheryl McClaskey
Eric, Julie, Jett, Seth, and Peri
McClaskey
Kerrie McClaskey
Greg and Nancy Morrison
Muffs and Tails
Torey and Bethany Rauch
Town and Country
Homecenter
Tri-County Bank & Trust
U-Rent It Center
Vaught Electric, Inc.
Bob and Cathy Weliever

Dave West *(continued)*

Karen West
Dave Wilson Farms
Zippy Lube

Katherine "Katy" White

Chuck Sommer

Mike Whitecotton

Kay Whitecotton

Larry Wiatt

Tony and Cindy Cosenza

Leland Wilkinson

Tracey and Sharon Barr

Sherry Winger

Linda Carpenter
Steve Loy
Harold and Linda Mennen
Lee and Jeanie Walden

Colin Winings

Robin Fruits

Jack and Louise Wolf

Loyal and Diana Bell

Howard Wood

Richard and Nancy Inskeep

Robert Allen Woodard

Michael and Janet Heinold
Kevin, Holly, Will, Lauren, and
Alex Kellerman
Erick Larson
Mike, Kim, Kai, and Kaleb
Warren and Judy McDonald

Margaret Jane Wright

Rusty and Kathy Carter

David Yerkes

Jerilyn Yerkes

Gifts in Honor

Jama Abney

Andra Storms

Joe Allen

Chuck Sommer

Owen Bennett

Chuck Sommer

Andy Biddle

Mike and Carol Plant

Brent Bokhart

Dan and Stacey Guard

**Emily Bost and the
Garners**

Anne Bost

Nancy Bowes

Mike and Carol Plant

Karen & Phil Campbell

Jane Livingston

Kristen Carpenter

Andra Storms

**Hannah, Lucas, Natalie,
Charlotte, and Lydia**

Kenneth and Terri Carpenter

Rusty Carter

Mike and Carol Plant

Richard & Elaine Chase

Pat Inman
Howard Miller

Jill Coates-Matthews

Chuck Sommer

Mandi Cole

Andra Storms

Stephanie Cowan

Andra Storms

Nancy Coyle

Jim and Mary Coyle
Julie Coyle
Tom and Laurie Coyle

Kaycee Cummings

Andra Storms

Nolan Eller

Chuck Sommer

Lyle & Dorothy Fogel

Cal and Marsha Black

Terri Grant

Mike and Carol Plant

Jack & Joyce Grimble

Jane Livingston

**Jennifer Guard & Javan
Barton**

Jane Livingston

Lori & Tim Guard

Jane Livingston

Sherry Harris

Art League Dept. K

Judy Harshbarger

Tom and Robyn Henderson

Kay Harshbarger

Tom and Robyn Henderson

Les Hearson

Jeff and Sue Lucas
Darrell and Tresha Meadows

Rex & Sandy Henthorn

Chuck Sommer

Tobey & Peggy Herzog

Lyle and Dorothy Fogel

**Roger & Judy
Hildebrand**

David and Sheridan Hadley

Shannon Hudson

Chuck Sommer

Tom and Sharon Keedy

Janet Keedy

Brian Keim

Bill and Georgia Redden

Gary Ketchum

Rex and Sandy Henthorn

Kyla King
Andra Storms

Judi Kleine
Chuck Sommer

Terry Lawrence
John and Betty Culley

Michael Lindley family
Sheila Evans

Kennedy Lindquist
Andra Storms

Phil Littell
Mike and Carol Plant

Stephanie & Carter Livingston
Jane Livingston

Bailey Lough
Andra Storms

Jennifer Lowe
Chuck Sommer

Sue Lucas
Steve and Diane McLaughlin

MCCF Board Members & Staff
Marvin and Gloria Oliver

Sue McCutchan
Tom and Robyn Henderson

Judy McDonald
Mike, Kim, Kai, and Kaleb Warren

Irmi McKinney
David and Sheridan Hadley

Linda & Harold Mennen
Mike and Carol Plant

Gail Merriman
Dan and Beth Strasser

Janee Money
Andra Storms

Dian Moore
Chuck Sommer

Ruth Ann Newnum
Crawfordsville Art League
Dept. K

Tracie Nichols
Andra Storms

Brenda Nielsen
Andra Storms

Larry Paarlberg
Howard Miller

Dale Petrie
Daniel Petrie

Jill Pettit
John and Denise Walker

Mike & Carol Plant
Jim Collier

Yvonne Ratcliffe
Chuck Sommer

Bill Redden
Gene and Linda Redden
Barbara Boleng
Fern Herrington

Dr. John Roberts
Mike and Carol Plant

The Rush Family
Nancy Buckles

Denny & Amber Rusk
Jane Livingston

Rex Ryker
Bob and Melody Grand

Riley Sanders
Andra Storms

Coach Rick Schavietello
Andrew and Amy Smithka

Jim & Anne Sexton
Christine Schlachter

Diane Shelton
Kevin and Shari McCord

Joe Sparks
Chuck Sommer

Dr. Linda Spencer
Rex and Sandy Henthorn

Curtis Stevens
Beth and Dan Strasser

Donna & Lowell Stockdale
Jane Livingston

Pat Stull
Warren and Julia Rosenberg

Kelly Taylor
Bob and Melody Grand
Hoosier Heartland State Bank

Paul Todd
Daryl and Mary Helen Fry

Lois & Mel Vance
Jane Livingston

Staff of the General Lew Wallace Study & Museum
Gail Stephens

Darlington Weliever Sisters
Harold and Linda Carpenter

Wellbrooke Legacy Staff
Bill and Georgia Redden family

Beverly Wheeler
Chuck Sommer

Molly & Jack Whitecotton
Heidi Myers

Dan & Gwynn Wills
Marty Pool
Jeff and Renee Wills

MEMORIAL AND HONOR gifts are great ways to honor those who are, or have been, significant in your life, or in the community. Your gift will go to the fund you specify in the name of the one you are honoring. All memorial and honor gifts are acknowledged to the person or people you designate so that the loved one's family, or person you are honoring, is aware of the gift. Or you can make an anonymous gift if you desire to do so. The amount of the gift is confidential and only you will receive a gift acknowledgment for tax purposes. Memorial and honor gifts are listed in our monthly Tribute page in the Journal Review unless you specify otherwise.

Many of our donors find comfort by creating a fund in the name of their loved one. It is one way they can honor those who have passed, and find purpose in the pain by helping others. Funds created in memory of loved ones can be used to support areas that were important to them, such as, education, history, human services, youth, etc. Or, they could establish an unrestricted fund in their memory, which would give broad support to areas of greatest need in our community.

PLANNING YOUR LEGACY

Support The Causes You Care About

While it's impossible to know or control what happens in the future, you can have security about achieving your ultimate goals by making a plan.



Planning is one way to create a secure future for you and your loved ones. With a good plan, you can rest easy knowing that your family will be well cared for and your property will pass to your intended beneficiaries.

HOW TO MAKE A BEQUEST

A bequest is one of the easiest gifts you can make to significantly impact our work. Your estate planning attorney can include a provision in your will that leaves a lasting gift to our organization. Your bequest could be a gift of specific assets (such as a vehicle, artwork or coin collection), a dollar amount (\$1,000, \$10,000 or \$50,000), or a percentage of your estate (3%, 10% or even 25%).

A bequest could also be made from the residue of your estate or what is left after all gifts have been made to your heirs.

BENEFICIARY DESIGNATION GIFTS

It's easy to designate beneficiaries for assets that are not transferred through a will. For example, you can designate MCCF as a beneficiary of your retirement assets, life insurance policy, bank accounts and investment funds by completing a simple form. Please contact your account or asset administrator to designate us as a beneficiary of these assets. Let us know if we can make sure the proper designations are in place so that your plans are carried out according to your wishes.

BEQUEST BENEFITS

A charitable bequest or beneficiary designation gift is **an easy way for you to help us in our work.** Here are some of the many benefits:

- **Your gift costs you nothing today**
- **Your gift is free of federal and estate tax**
- **You can change your mind later**
- **You can still benefit your heirs with specific gifts**
- **You can leave a legacy**

SAMPLE BEQUEST LANGUAGE

Please contact us to request sample language that your attorney may use in drafting a bequest to MCCF.

Sample bequest language is also available on our website at www.mccf-in.org

This information is not intended as tax, legal or financial advice. Gift results may vary. Consult your personal financial advisor for information specific to your situation.
19TH15-23KJ50

The names and images shown here are representative of typical donors and may or may not be actual donors to the organization. Under federal rules your benefits may be different from this example. Please contact us for your specific benefits.
Copyright © 2025 Crescendo Interactive, Inc. Used by permission.



All Together Now

The Women's Legacy Fund (WLF) of the Montgomery County Community Foundation is a group of women committed to making a positive impact on the lives of women and children in Montgomery County. They do this by pooling their philanthropic gifts to increase the impact of their efforts. Each member makes a yearly financial contribution to WLF with a portion going to an endowment and a portion to funding grants. The members then gather to select the grants to fund. Since 2008, the WLF has awarded **\$189,388** to local nonprofit organizations benefiting women and children.

For more information on joining the Women's Legacy Fund, visit www.mccf-in.org/womens-legacy-fund

2024 Women's Legacy Fund Grants

United Way in Montgomery County: \$2,354
Dolly Parton Imagination Library

Montgomery County Treasurer: \$3,000
Family Recovery Court needs and incentives

New Hope Christian Church: \$1,982
Camp Hope STEAM lab supplies

Putnam County Family Support Services: \$1,500
Operation Brain Building for Montgomery County families

Crawfordsville Adult Resource Academy: \$4,000
Women and Children Rise to the Top program

Montgomery County Extension Homemakers: \$450
Head Start Reading program

Volunteers for Mental Health: \$450
Funding for annual Youth Summit

Hand in Hand Creative Learning: \$2,314
Supplies and professional development

Volunteers of the Year

Since 1996, the recognition of outstanding volunteers has been a staple of the MCCF annual meeting. Two awards are presented, one to an adult and another, the Peggy Herzog Youth Volunteer award goes a young person.

The 2024 MCCF Volunteer of the Year was Nate Baldwin, nominated for his service to the Sugar Creek Players. Currently vice president of the board, Baldwin, a theater parent, strives to make Sugar Creek Players a better organization every day and always gives 110%. Specializing in computer technology at Wabash College, he designs and manages the website and assists with the ticketing system.



Nate Baldwin (holding plaque) with his family and members of the Sugar Creek Players Board.

His skills don't end there. He offers his artistic skills to paint beautiful scenes for many of the productions and just recently directed a show himself. He's even used his plumbing and electrical skills to keep things going.

MCCF Board President Marta Sweek presented Baldwin with a plaque commemorating his service and a \$1,000 grant Sugar Creek Players in his honor. Other nominees were Mike Everett for the Crawfordsville District Public Library and Sarah Reed for Humans United for Equality.

The 2024 Peggy Herzog Youth Volunteer of the Year Award was awarded to Jessica Bradley for her service to Volunteers for Mental Health in Montgomery County. Bradley is a high school board member and program volunteer for VMHMC. She works within her school community to involve a variety of volunteers who support VMHMC programs. She brings her youthful energy to the board and always exudes positivity and respect. She is both the legs and the wheels when it comes to getting things done in the southern half of the county, whether hanging hundreds of signs in school buildings or checking donation bins for the annual Christmas drive.



Jessica Bradley (center) with Peggy Herzog and Denise Booher Walker

President Sweek presented Bradley with a plaque commemorating her service along with a \$1,000 check to VMHMC in honor of her service. Other youth nominated were Corbin Meadows for the North Montgomery Key Club and Emma Pack for Rainbows and Rhymes Preschool.

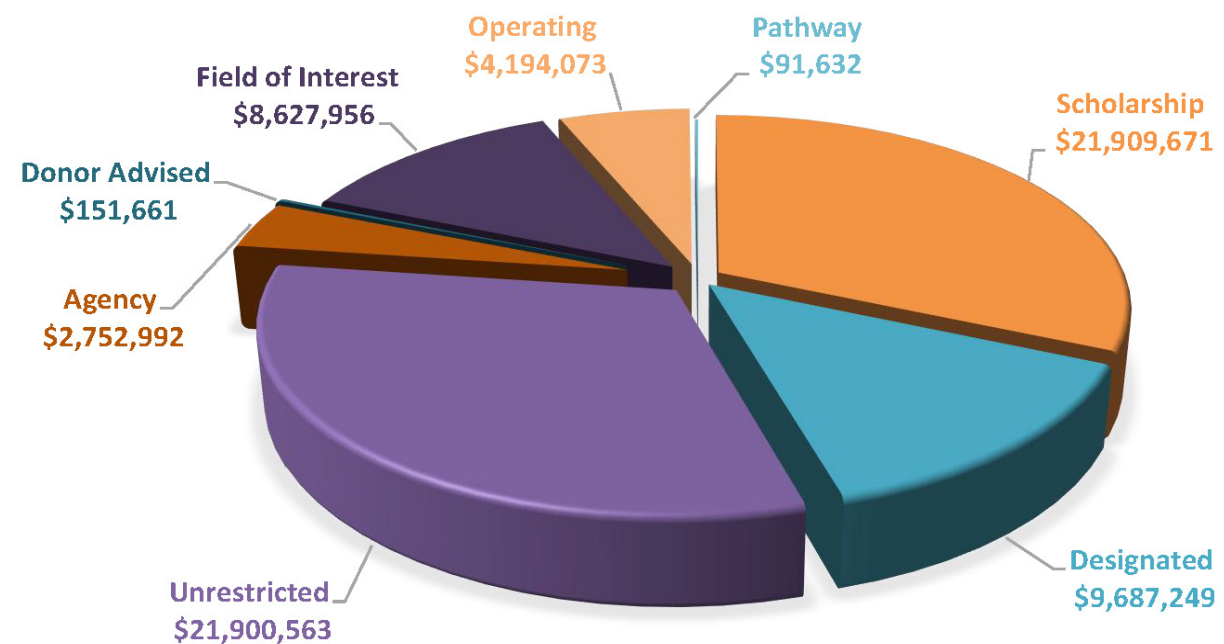
Montgomery County Community Foundation Statement of Financial Position

December 31, 2024 and 2023

ASSETS	2024	2023
Current Assets	\$ 8,151,883	\$ 7,000,426
Investments	\$ 60,717,126	\$ 53,458,552
Property and Equipment	\$ 899,582	\$ 516,199
Other Assets	\$ 7,854,032	\$ 8,056,171
TOTAL ASSETS	\$ 77,622,623	\$ 69,031,348
LIABILITIES		
Current liabilities including Agency and Trust Endowed Funds	\$ 3,349,116	\$ 3,142,142
Long-Term Obligation	-	-
TOTAL LIABILITIES	\$ 3,349,116	\$ 3,142,142
TOTAL NET ASSETS	\$ 74,273,507	\$ 65,889,206
TOTAL LIABILITIES AND NET ASSETS	\$ 77,622,623	\$ 69,031,348

Note: The 2024 information is an excerpt of the audited financial statements. The 2024 information is currently under audit and is subject to change. Complete financial statements are available for inspection in our office at 119 East Main Street, Crawfordsville, Indiana.

Endowed Assets by Fund Type as of 12/31/2024



WHY GIVE THROUGH THE COMMUNITY FOUNDATION?

- Your charitable legacy is secured with a gift that lasts forever.
- You can give many types of assets, from cash or stocks and bonds, to gifts of grain or life insurance.
- You can support your favorite causes and we can offer you flexible philanthropic options. We work with people with every kind of philanthropic interest.
- Your decision about the type of gift to make is important and we have the experience and knowledge to help you. We can also help you identify areas of need your gift could meet.
- You experience the fulfillment of giving while we take care of the paperwork.

HOW DO I GIVE THROUGH THE COMMUNITY FOUNDATION?

It is easy to make a gift to MCCF! You can visit us online at mccf-in.org and click on the Donate Now button and fill out the simple form. Or you can mail your donation to:

MCCF, PO Box 334, Crawfordsville, IN 47933

If you wish to make a stock gift, please contact MCCF beforehand to get the necessary information. If you are considering establishing a fund with MCCF, Kelly will be happy to meet with you to discuss your options. Please call us at 765-362-1267 if you have any questions or would like more information.



Scan here for online giving!

Montgomery County Community Foundation Board of Directors

Tracey Barr
Preston Bost
Anna Bravo-Moore
Cathy Caldwell

Chris Cox
Wendy Feller
Erin Gobel
Jack Grimble
Zach Hockersmith

Gary Isenberg
Brenda Lovold
Sheila McCormick
Debbie Schavietello

Our Vision

Our vision is to be a proactive leader facilitating strategic philanthropy and inspiring creative collaboration in the community.

Our Mission

Our mission is to build bridges to support the future of Montgomery County.

Our Values

- We promise *integrity* in all facets of our work.
- We provide *leadership* by engaging in our community.
- We promote *relationships* with our stakeholders.
- We place the *community* as our highest priority.



Our Staff

- Kelly S. Taylor**, Chief Executive Officer
- Ellen Hedge**, Office Coordinator
- Cheryl Keim**, Grants & Community Relations Director
- Devan Plant**, Chief Financial Officer
- Sarah Storms**, Development Director
- Lisa Walter**, Early Learning Director
- Ashley Warren**, Scholarship Director



Thank you, Paula!

This year has been a bittersweet time of transition in our office as Paula Reed, our longtime Donor Services Director, has retired. Paula joined MCCF in 2008 and helped guide our organization through many changes and a great deal of growth.

In addition to assisting donors and fund owners, Paula also produced the MCCF Annual Report, newsletters, and other publications. Her gift for storytelling and attention to detail connected readers with the work of MCCF through grants, scholarships, and other initiatives.

We will miss her incredible talent, office antics, and so much more, but wish Paula the very best in her retirement!





MONTGOMERY COUNTY
**COMMUNITY
FOUNDATION**
Looking forward. Giving back.

Montgomery County Community Foundation
119 E Main Street - PO Box 334
Crawfordsville, IN 47933
765.362.1267 - www.mccf-in.org

