



Preparing For Growth Workshop

Aspire Johnson County

April 23, 2015



Introduction/Speaking Topics

- 1st Quarter 2015 Summary
- 2nd Quarter 2015 Activities
- Public Involvement
- Project Considerations
- Project Milestones
- Summary



Summary of 1st Quarter Activities

JAN

- Establishment of Community Advisory Committee (CAC)

JAN

- Establishment of Stakeholder Working Group (SWG)

JAN

- CAC/SWG Kickoff Meeting on January 29

JAN

- Section 6 Project Website release (www.i69indyevn.org) in January

FEB

- Kickoff Meeting with State and Federal Resource Agencies on Feb 17

FEB

- Public Information Meetings (PIMs): February 23th and 25th

FEB

- Review of Public Comments

FEB

- Initiate and conduct scoping process on whether alternatives outside SR37 corridor should be considered



Summary of 1st Quarter Activities (Continued)

FEB

- Resource Agency Kickoff Meeting

FEB

- Public Involvement (CAC/SWG/PIM)

FEB

- Gathering Red Flag Data

FEB

- Development of baseline traffic information

FEB

- Initial updates of GIS-related information on resources along SR37 (Steams, wetlands, businesses, developments)

MAR

- Baseline Traffic Information

MAR

- INDOT/FHWA Coordination

MAR

- Public Comment Review and Consideration



Anticipated 2nd Quarter Activities

- Dedicated Section 6 Project Office opening (April 6)
 - 7847 Waverly Road, Martinsville, IN 46151
- Complete Scoping Process and identify conceptual alternatives
- Issue the draft Purpose & Need
- Initiation of Field Activities along SR37 (wetland assessments, survey of development patterns, potential historic evaluations)
- Additional coordination with state and federal resource agencies meetings: April



Anticipated 2nd Quarter Activities (Continued)

- CAC and SWG Meetings: May
- Public Meetings: May
- Public comments on draft Purpose & Need and conceptual alternatives
- INDOT/FHWA Coordination
- Scoping Conclusion



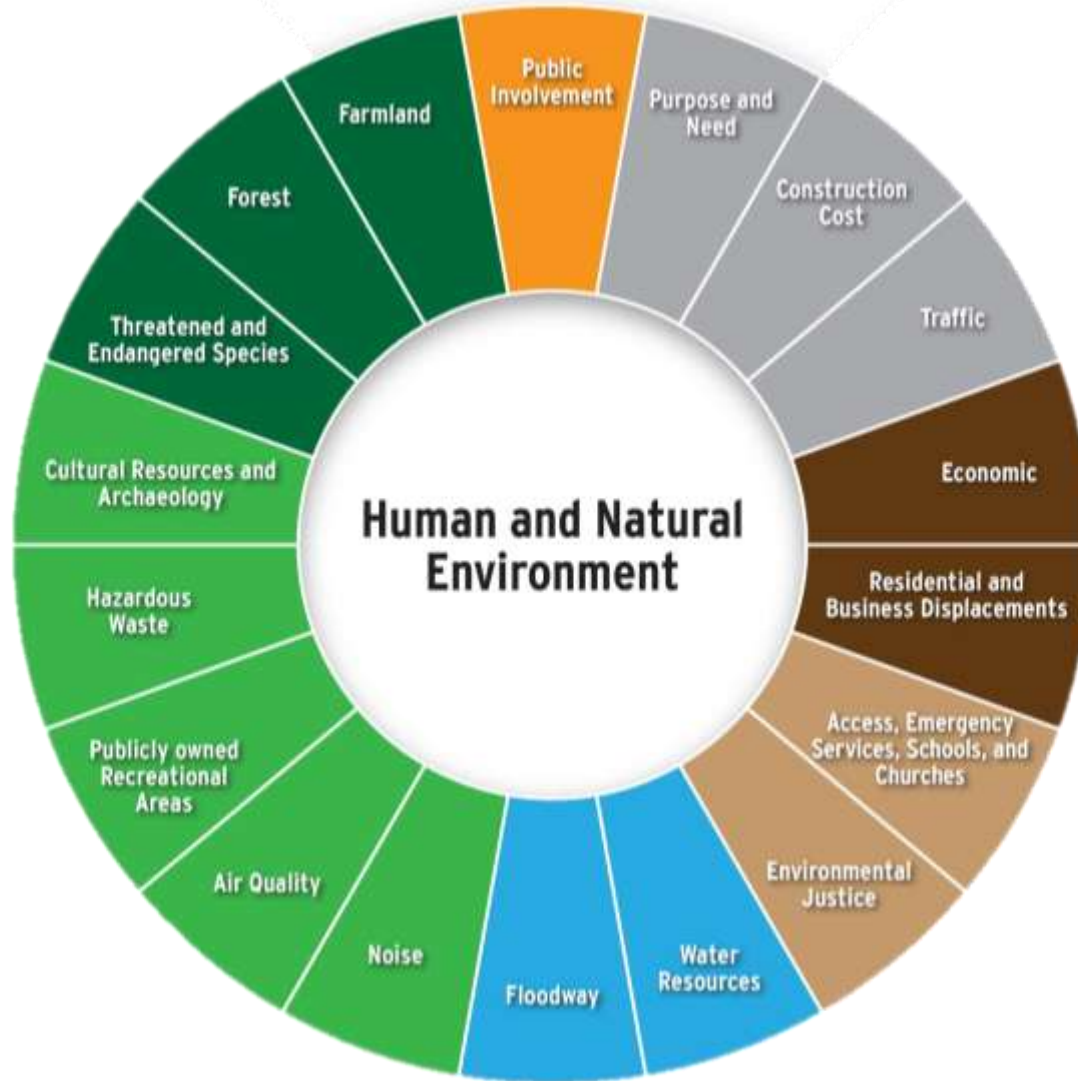
Public Involvement Summary

Community Advisory Committee (CAC)/Stakeholder Working Group (SWG) Comments:

- Consider Recent Zoning Changes
- Consider Recent Improvements in anticipation of I-69 using SR37
- Consider impacts due to change of access
- Consider expanding Committee to additional schools not adjacent to SR37
- Project timely and accurate information
- Consider farmland as “developed property”
- Consider police, fire and emergency response times
- Consider opening of Section 5 and timing of Section 6

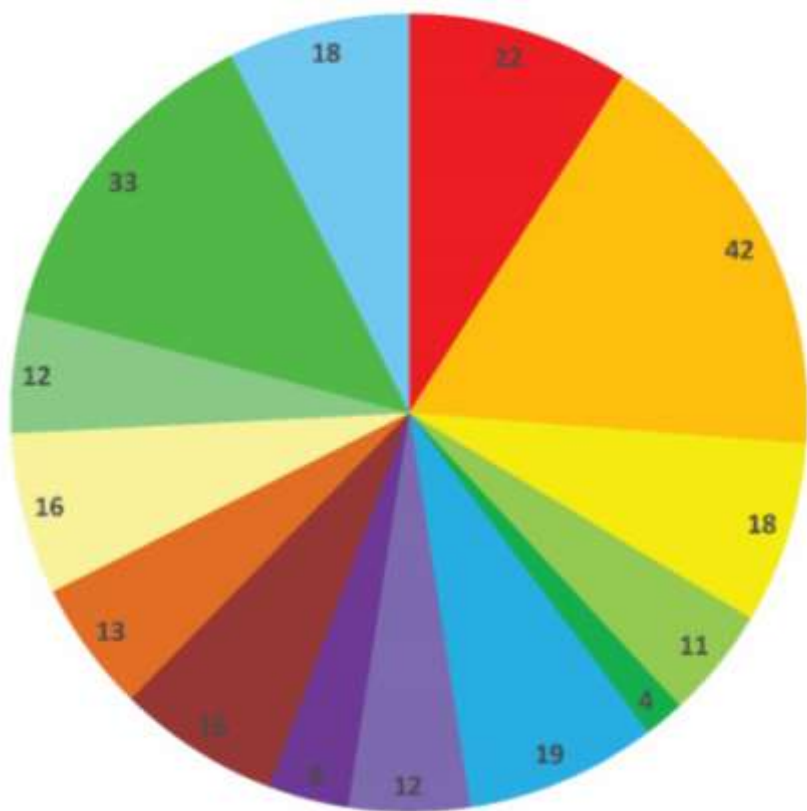


Environmental Considerations



February 23rd and 25th Public Meetings Summary

Suggested Section 6 Considerations



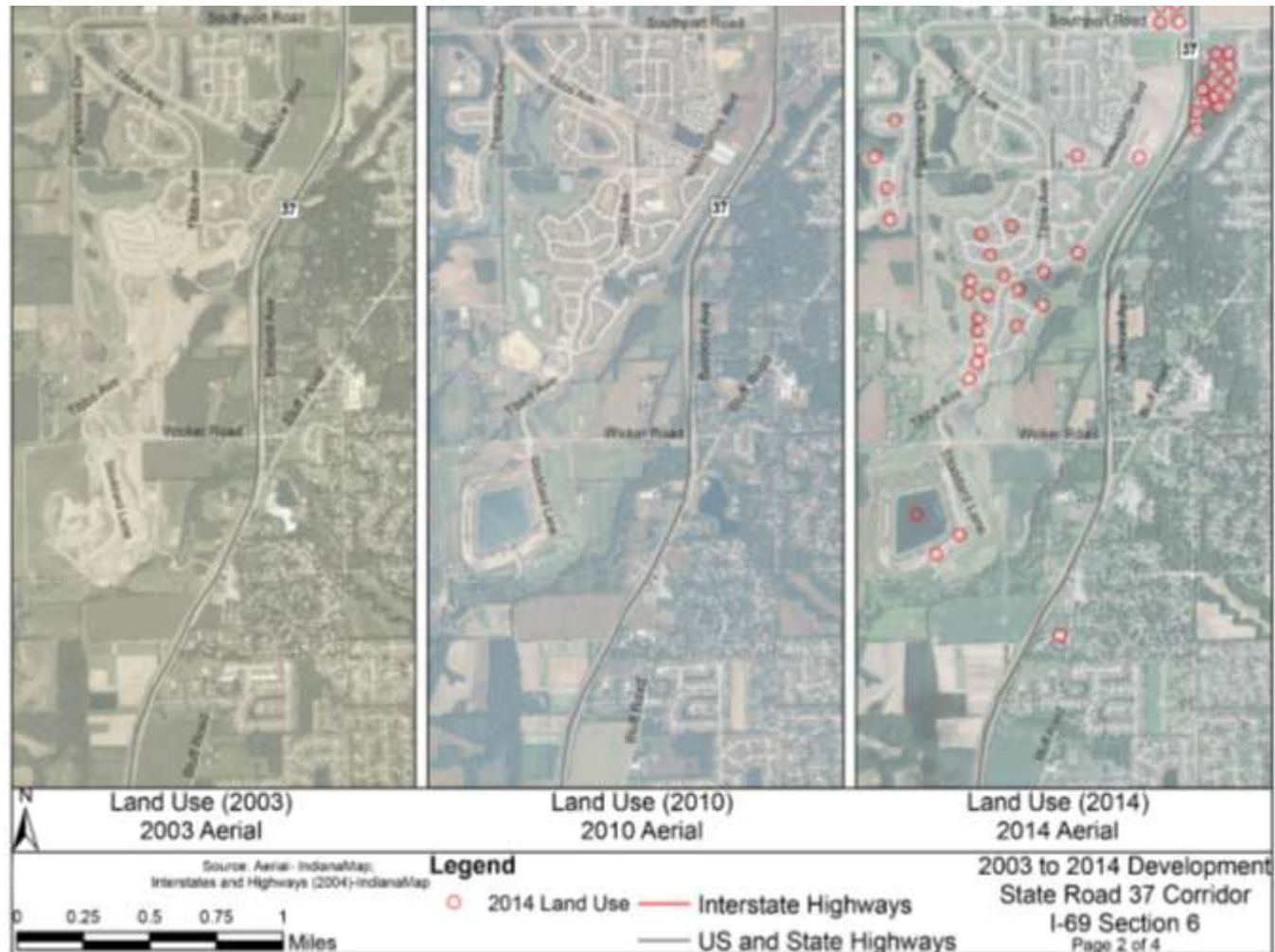
- Interchanges (22)
- Traffic (42)
- Acquisition (18)
- Noise (11)
- Flooding (4)
- Schedule (19)
- Safety (12)
- Outer Beltway (8)
- Funding/Cost (16)
- Environmental/Historical Impacts (13)
- Land Use (16)
- Access (12)
- Human Impacts (Residential, School, Business) (33)
- Other (18)



Number of comments based on topics and concerns mentioned in 133 comments received between February 20, 2015 and March 19, 2015.

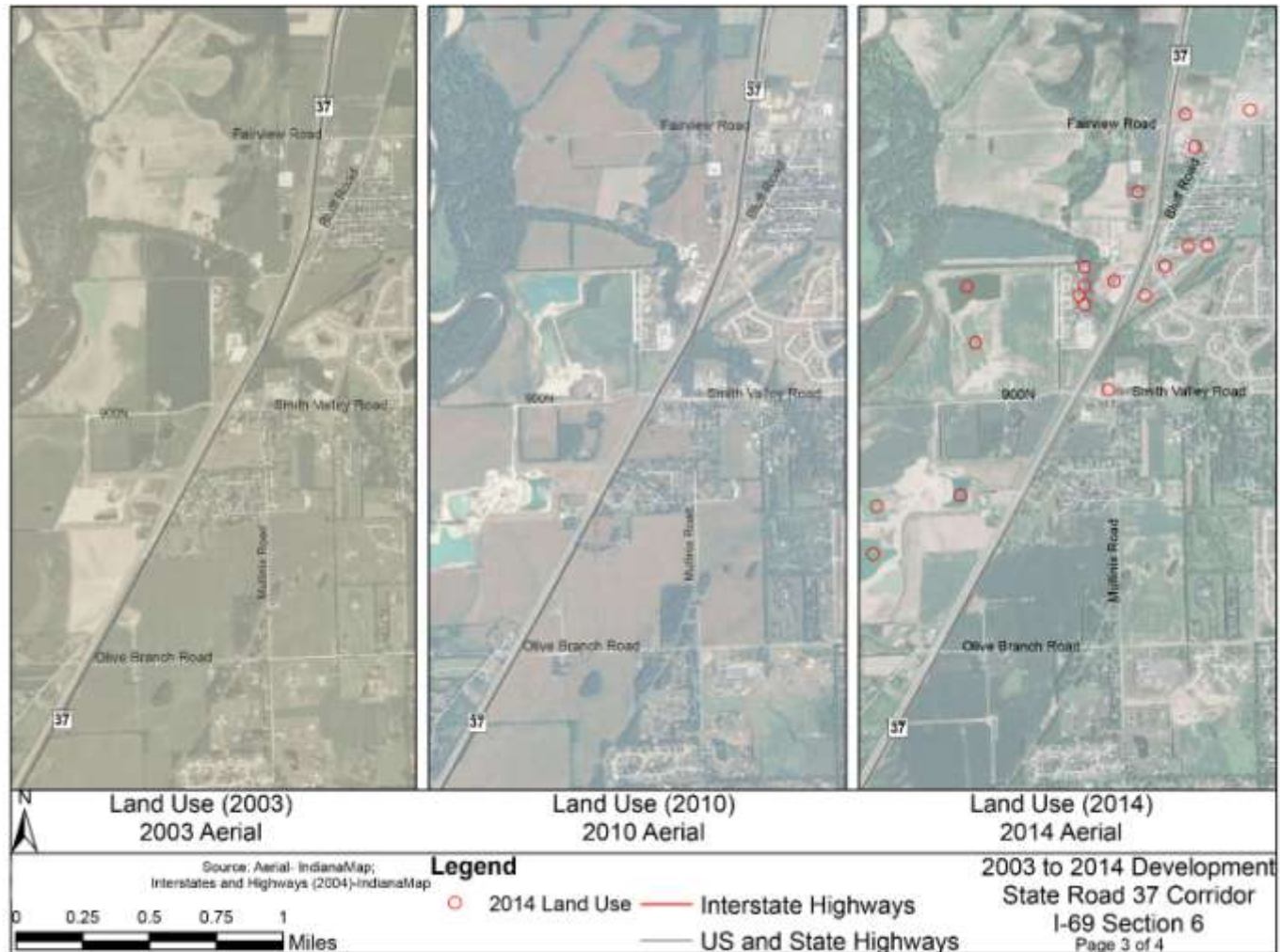
Project Considerations

LAND USE CHANGES 2003 – 2014



Project Considerations

LAND USE CHANGES 2003 – 2014



Project Considerations

COST

ITEM	NOTES
Mainline	By # of lanes and terrain
Interchanges	Size, type and locations
Bridges & small structures	Over water or road
Local overpasses & signals	Typical overpass length
Major utilities	Pipelines, towers and known fiber
Mitigation	Natural and Historic Impacts
Land acquisition	Average prices for residential, commercial, industrial, agricultural



Project Milestones

Public Information Meetings

- 1st Quarter 2015 (complete)
- 2nd Quarter 2015
- 4th Quarter 2015

Draft Environmental Impact Statement

- 1st Quarter 2017

DEIS Public Hearing

- 2nd Quarter 2017

FEIS/ROD

- 1st Quarter 2018



Summary

- **Project On Schedule**
- **Stay Involved**
- **Stay Informed**
- **Provide Information to Project Team**
- **Utilize the Project Office for the latest project information**
- **We want everyone to have accurate and timely information.**





Sarah Rubin
INDOT Section 6 Project Manager
SRubin@indot.in.gov
317-234-5282