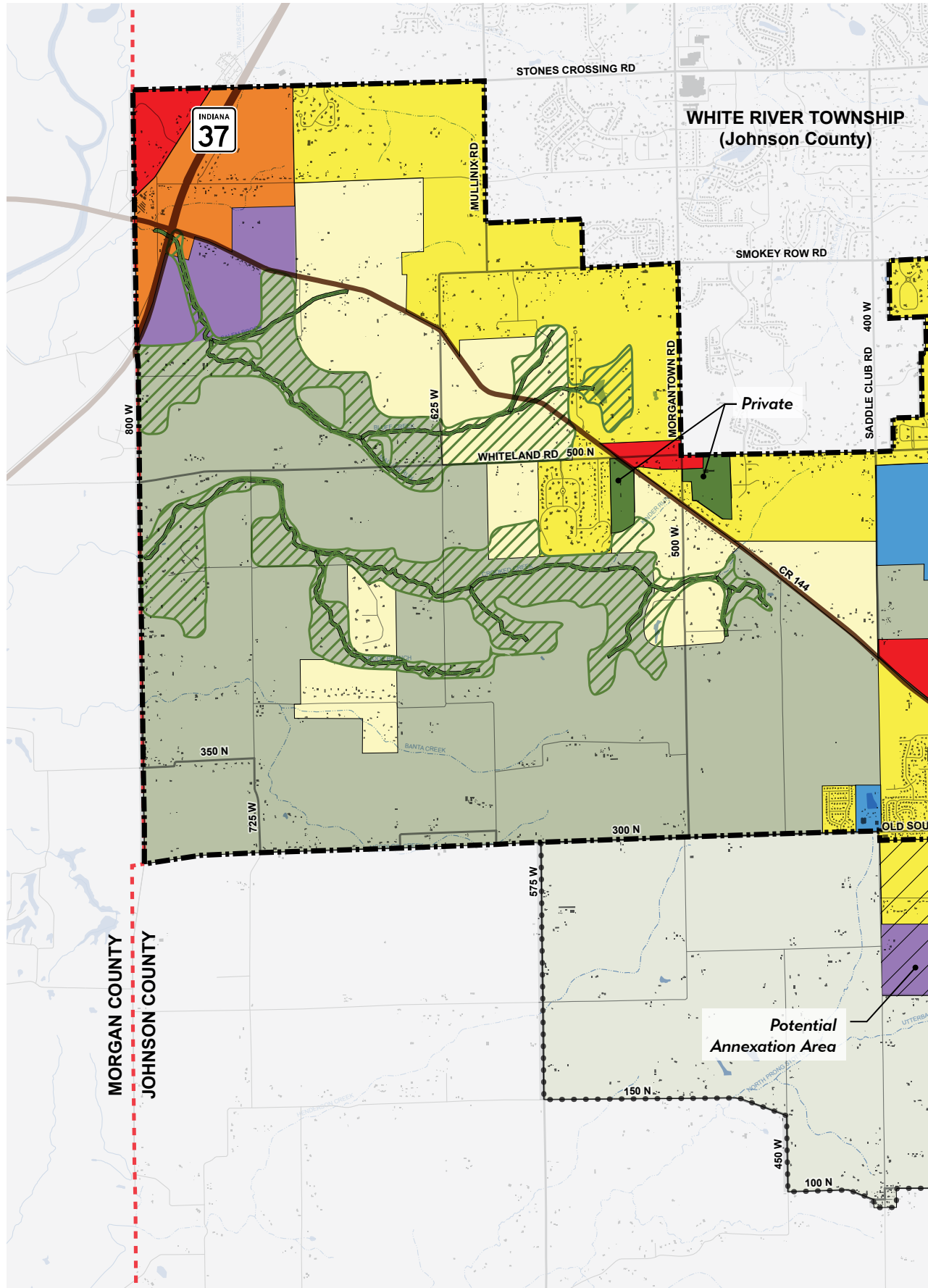
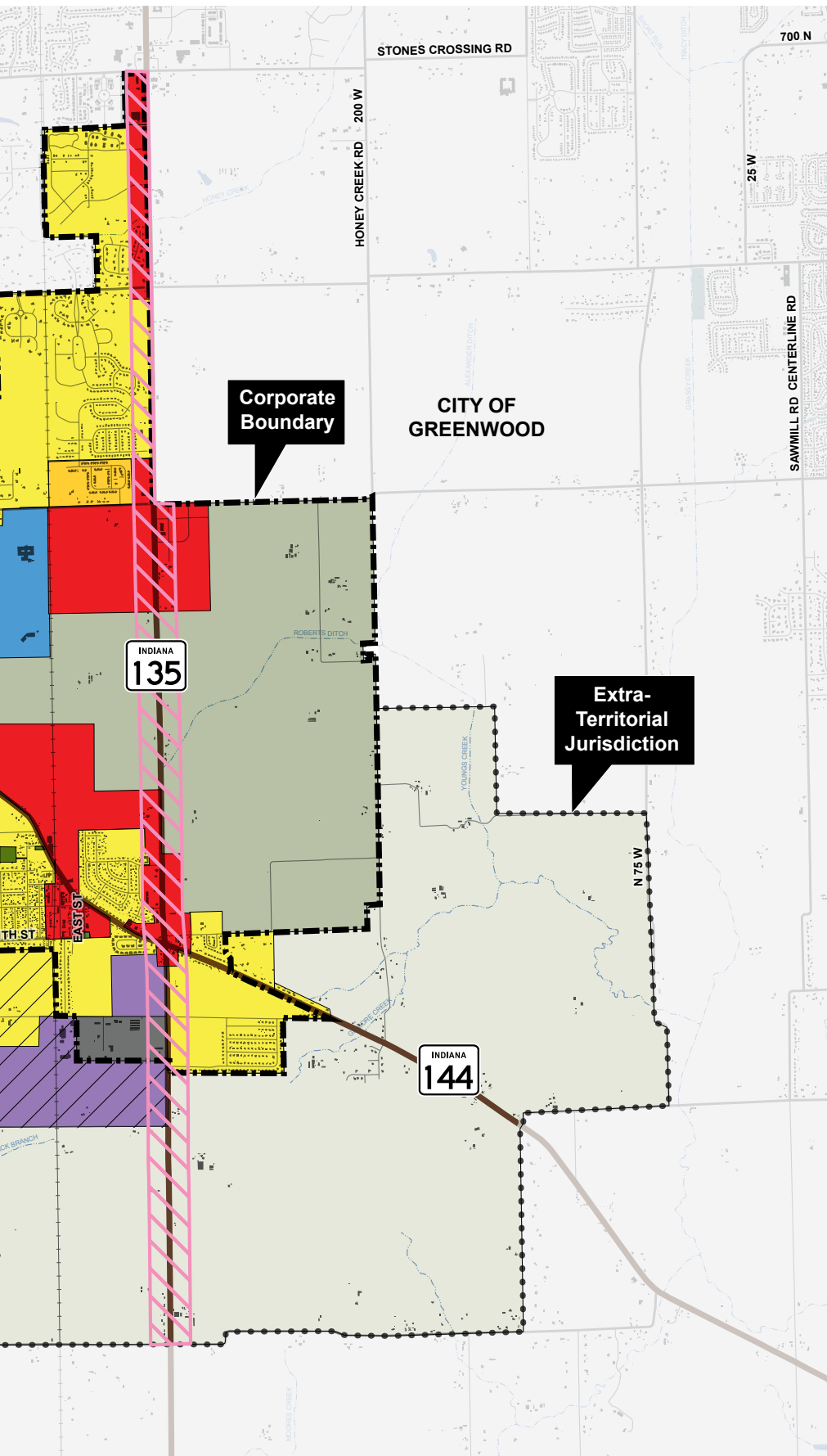


# 3

## Land Use

OUR GOALS





## Official Future Land Use Map

### LEGEND

- Rural Residential
- Suburban Residential
- Urban Residential
- Mixed-Use Highway Commercial
- Mixed-Use Neighborhood/Community Commercial
- Light Industrial / Business Park
- Industrial
- Municipal / Institutional
- Recreation / Conservation
- Wooded Land
- Agricultural
- Corridor Overlay (Zoning Ordinance - 500' from Center Line)



Source: Base Mapping - Johnson County GIS data.

**NOTE:** This is the Official Future Land Use Map for the Town of Bargersville. There are two additional maps on page 143 intended to be used as guides for future updates to this Official Land Use Map as the community develops and utility systems are extended accordingly.