



## AGENDA

### CME PROGRAM DESIGNED FOR FAMILY PHYSICIANS

Earn up to 13.25 Prescribed AAFP CME credits at a meeting planned by family physicians to meet the needs of family physicians. An ABFM KSA Study Group will offer an additional 8 AAFP Prescribed credits and 10 ABFM Certification Points upon successful completion. Our education program is based specifically on previous attendee evaluations and member needs assessments.

### EARLY BIRD REGISTRATION PRICING

*Please note: Walk-in registration fees will increase an additional \$50.*

	IAFP Member	Non-IAFP Member	Virtual Attendee
<b>Friday &amp; Saturday Registration</b>	<b>\$200</b>	<b>\$400</b>	<b>\$200</b>
Includes: General CME Sessions on Friday and Saturday; PDF of syllabus materials. Lunch will be provided on Friday. Beverages and snacks will be available throughout the day. Virtual Attendees can access a live stream of the program on Friday and Saturday morning ONLY - Saturday afternoon's POCUS session will not be live streamed.			
<b>Friday Only</b>	<b>\$150</b>	<b>\$250</b>	
<b>Saturday Only</b>	<b>\$150</b>	<b>\$250</b>	
<b>Sunday evening KSA Study Group</b>	<b>\$100</b>	<b>\$200</b>	

### CME CREDIT BY DAY

Assuming all CME sessions are attended:

<b>Friday</b>	<b>7.25 Prescribed Credits for CME</b>
<b>Saturday</b>	<b>6 Prescribed Credits for CME</b>
<b>Sunday</b>	<b>8 Prescribed Credits for Virtual KSA Study Group</b>

## What is the Virtual Attendee option?



We will send you a link before the meeting to allow you to view the CME sessions (Friday & Saturday AM) from your home or office. You will earn CME credit the same as in-person attendees. Using Zoom, you will be able to see the slides as the speaker progresses through them. Listen on your computer/tablet speakers or headphones. Enter questions and (time permitting) we will ask the speaker to answer them. Online attendance is in real time only as the meeting takes place - sessions will not be archived following the event.

Sunday evening's KSA Study Group will use Zoom. More details and instructions will be sent to registrants.

---

## Friday, November 19

8:00am - 9:00am **Registration Open**

9:00am - 12:15pm **Managing Sleep Health in the Primary Care Setting**  
- Larry Culpepper, MD, MPH; Paul Doghramji, MD, FAAFP; David N. Neubauer, MD

We are thrilled to announce that our 2021 Fall Conference will feature a unique two-part sleep health program generously provided by the National Sleep Foundation. This session will feature an introduction to the science of and health-promoting benefits of sleep, and will also offer an overview of sleep screening methods and pharmacotherapy.

9:00am - 10:00am **Session 1: The Importance of Sleep Health**  
**Learning Objectives**

- Summarize the importance and benefits of good sleep health
- Describe risk factors associated with not getting enough sleep
- Explain the benefits and importance of measuring sleep as a vital sign
- Use appropriate diagnostic tools to assess patients' sleep health

10:00am - 10:15am **Break**

10:15am - 12:15pm **Session 2:**  
**Diagnosing and Treating Common Sleep Disorders in Primary Care**

This two hour-long interactive session will feature industry-leading sleep experts discussing the management and treatment of sleep disorders prevalent in primary care offices. After an introduction to sleep disorders in primary care, Faculty members will

walk attendees through several case studies. Case studies may feature pediatric, obese, chronically-ill patients and/or adult patients.

### **Learning Objectives:**

- Explain how sleep health, management and treatment of sleep disorders contribute to overall well-being
- Identify risk factors and symptoms of insomnia, restless leg syndrome, obstructive sleep apnea, narcolepsy and circadian rhythm disorders
- Describe and differentiate common treatments available for these conditions
- Determine when it's appropriate to prescribe medications and/or refer patient for a sleep study

### **Faculty Biographies:**



#### **Larry Culpepper, MD, MPH**

Dr. Culpepper, Professor of Family Medicine, was the founding Chairman of the Department of Family Medicine at Boston University School of Medicine. He received his MD from Baylor College of Medicine and his MPH from Boston University. He has served as President of the North American Primary Care Group (NAPCRG), Chairman of the Research Committee of the Society of Teachers of Family Medicine (STFM). He has received the STFM Excellence in Education, the STFM-NAPCRG Hames Research awards, and the Maurice Wood Award for Lifetime Contribution to Primary Care Research and was elected to the National Academy of Medicine in 1998.

He has conducted research in otitis media, and school-based and community interventions to improve pregnancy outcomes and to prevent teen pregnancies and has been the principal investigator of an AHRQ funded center for patient safety research devoted to low income and minority vulnerable populations in ambulatory care settings, principal investigator of interventions to improve the care of uninsured patients and urban patients with diabetes and depression, co-principal investigator of a study to decrease delays in CHC patient follow-up for abnormal mammography, and co-investigator of a long term study of the course of anxiety disorders in primary care settings. Dr. Culpepper co-chaired a panel on Otitis Media with Effusion for the American Academy of Family Physicians, the American Academy of Pediatrics, and the American Academy of Otolaryngology-Head and Neck Surgery.

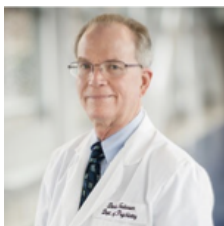
He founded and chaired the board of the Rhode Island Public Health Foundation (1992-2011). He is a member of the Anxiety and Depression Association of America, and the National Sleep Foundation Scientific Advisory Boards. He was the primary care member of an Institute of Medicine Committee on the Assessment of Ongoing Efforts in the Treatment of PTSD. He has over 275 publications, was the initial family medicine editor of UpToDate, and is the editor of the Journal of Clinical Psychiatry Primary Care Companion.



**Paul Doghramji, MD, FAAFP**, is currently senior family practice physician at Collegeville Family Practice and the Medical Director of Health Services at Ursinus College, both in Collegeville, Pennsylvania. He is also an Attending Physician in family practice at Pottstown Memorial Medical Center in Pottstown, Pennsylvania. He is board member of the National Sleep Foundation.

Dr. Doghramji received his medical degree from Jefferson Medical College in Philadelphia, Pennsylvania in 1982. He then completed his residency in family practice at Chestnut Hill Hospital in 1985. He is a member of the American Academy of Family Physicians which awarded him Fellowship Degree in 2005. He is also member of the Pennsylvania Academy of Family Physicians.

He has received the American Medical Association's Physician Recognition Award 8 times, in every qualifying year; the last time was 2011. Dr. Doghramji has published over 50 papers in peer-reviewed journals, including the American Journal of Medicine, Current Medical Research and Opinion, and Postgraduate Medicine, as well as numerous websites on topics such as sleep disorders, gout, rheumatoid arthritis, biology of leg disorders, depression, chronic pain, health literacy, and diabetes. He is also co-author of the textbook, Clinical Management of Insomnia, recently out in its second edition.



**David N. Neubauer, MD** is Associate Professor of Psychiatry at the Johns Hopkins University School of Medicine and Associate Director of the Johns Hopkins Sleep Disorders Center. He is a Fellow of the American Academy of Sleep Medicine and Life Fellow of the American Psychiatric Association, and he is a member of the Sleep Research Society.

He is the author of the Understanding Sleeplessness: Perspective on Insomnia published by the Johns Hopkins University Press. He also has written numerous journal articles and book chapters on sleep related topics. He co-authored the 2017 American Academy of Sleep Medicine Clinical Practice Guidelines for the Pharmacologic Treatment of Chronic Insomnia in Adults. Dr. Neubauer was appointed by the American Psychiatric Association as liaison to the National Sleep Foundation Sleep Time Recommendations project. Whenever possible he champions the importance of good sleep as key component in the pursuit of wellness. In 2019, Reader's Digest named Dr. Neubauer "Best Sleep Doctor in Maryland."

12:15pm - 12:30pm Break

12:30pm - 1:30pm CME Lunch:

## **COVID-19 Provider Enrollment For Vaccine Administration - Tami Johnson**

Join the Indiana Department of Health's Immunization Assessment and Promotion Director Tami Johnson, who will explain the enrollment process and qualifications required to administer the COVID vaccine in your office. At this time, all COVID-19 vaccine supplies have been purchased by the federal government for administration by enrollees in the CDC COVID-19 Vaccination Program. Only health care professionals

enrolled as vaccination providers directly through a health practice or organization can legally store, handle and administer COVID-19 vaccine in the United States.

This presentation will cover how to get started, what is needed to become a vaccine administrator, a walkthrough of the process and helpful tips for approval. We will offer resources to help you along the way and a Q & A session.

This session will be recorded and the recording will be available on demand on the IAFP's website following this presentation. Enduring AAFP Prescribed CME credit will be offered.



**Tami Johnson** is the Immunization Assessment and Promotion Director for the Indiana Immunization Division at the Indiana Department of Health. In that role, she leads a team of public health professionals including the Data Surveillance, Quality Improvement and Clinical Team for the Division. This team is committed to developing, implementing and evaluating health-focused evidence based public health activities to improve vaccination coverage including outreach, education, data analysis, research, policy/system changes and quality management initiatives. Ms. Johnson has also worked as a Field Specialist and Director of Field Operations for the Vaccines for Children Program. In 2018, she was nominated for an Indiana Immunization Public Health Advocate Award for the Division.

Ms. Johnson has worked in public service just a little over 20 years. Ms. Johnson took a small break from State government and worked at Hamilton Southeastern Schools while her two children now teenagers were in elementary school. Prior to that she worked at the Indiana Department of Environmental Management as the Children's Environmental Health Coordinator managing the late Governor O'Bannon's "Protecting Children from Environmental Threats" working on environmental health topics such as lead, mercury, asthma programs, indoor air quality, integrated pest management and healthy homes initiatives. Ms. Johnson was also awarded three Special Commissioner's awards for Environmental Excellence while working at IDEM.

Before going to state government, she worked as an Environmental Compliance Manager at Browning Ferris Industries.

1:30pm - 5:00pm

**CME Afternoon**

1:30pm - 2:30pm

## **A New Era in Cardiometabolic Risk Reduction - Louis Kurtizky, MD**

Cardiometabolic diseases, including type 2 diabetes mellitus (T2DM), heart failure (HF) and chronic kidney disease (CKD) are common, generally diagnosed and managed by a primary care clinician (PCC) (often in collaboration with a sub-specialist). By broadening the understanding of unmet medical needs, clinical practice guidelines, and scientific evidence, while managing the cardiovascular and renal risk of patients with T2DM, this project should improve patient health outcomes for patients suffering cardiometabolic disorders. Clinicians must also be aware of the implications of COVID-19 for these patients.

### Learning Objectives:

At the end of the activity, participants will be able to:

- Improve PCC's understanding of the unmet medical needs, clinical practice guidelines, and scientific evidence, while managing the cardiovascular and/or renal risk in patients with T2DM.
- Improve PCC's understanding of the unmet medical needs, clinical practice guidelines, and scientific evidence regarding treatment of patients with one or more of the following: T2DM, HF (including HFpEF and HFrEF), and CKD, as well as their interrelationships.
- Increase knowledge regarding the morbidity and mortality, and risk factors for chronic HF and DKD.
- Initiate guideline-recommended therapy in patients with chronic HF and/or DKD.
- Increase knowledge regarding the evolving evidence related to the safety and efficacy of SGLT2 inhibitors for chronic HF and DKD in patients with T2DM.
- Improve PCC's understanding of emerging clinical information on the course of disease, clinical impacts, and management of patients with T2DM who have contracted COVID-19.



**Louis Kuritzky, MD**, is a family physician and clinical assistant professor in the Department of Community Health and Family Medicine at University of Florida in Gainesville. He received his medical degree from the Medical College of Virginia in Richmond and completed his internship at Miami Valley Hospital in Dayton, Ohio.

Prior to joining the faculty at the University of Florida in 1983, Dr. Kuritzky was a member of the UCLA Family Medicine Clinical Faculty. His current professional society participation includes the American Society of Hypertension (ASH), the American Diabetes Association (ADA), and the American Association of Family Physicians (AAFP). In addition to being board-certified in family medicine by the American Board of Family Medicine, he has received certification as a Specialist in Hypertension by the American Society of Hypertension.

Dr. Kuritzky has given hundreds of presentations nationally and internationally at professional societies. He is on the editorial board of Internal Medicine Alert, and the International Journal of Impotence Research. He has authored over 100 articles in journals including the New England Journal of Medicine, JAMA, Comprehensive Therapy, Hospital Practice, and Patient Care.

2:30pm - 3:00pm

## Leadership Opportunities In Your Academy - Clif Knight, MD

### Learning Objectives:

On completion of this activity, participants will be able to:

- Understand the leadership structure of the Indiana Academy of Family Physicians and the American Academy of Family Physicians
- Recognize the importance of family physicians in leadership roles to improve healthcare and health outcomes
- Be able to state opportunities for serving as a leader as well as where to obtain additional leadership training





**Clif Knight, MD, CPE, FAAFP** is Assistant Dean of Clinical Affairs and Associate Professor of Family Medicine at Marian University College of Osteopathic Medicine (MU-COM) in Indianapolis.

Dr. Knight is an Indianapolis native and grew up less than five miles from Marian University. He earned a B.S. in Medical Technology from Ball State University and the St. Francis School of Medical Technology in Beech Grove, Indiana. He graduated from the Indiana University School of Medicine and then completed Family Medicine residency at Community East in Indianapolis and subsequently Faculty Development fellowship through the Department of Family Medicine at University of North Carolina in Chapel Hill. He is board certified by the American Board of Family Medicine. He achieved Certified Physician Executive designation through the American Association for Physician Leadership and the Certifying Commission in Medical Management.

Dr. Knight served on the Marian University Board of Trustees from 2011 to 2015 and was on the MU-COM Admissions Committee from 2012 to 2014. He is a Fellow of the AAFP and served on their Board of Directors from 2012 to 2014. He was president of the Indiana Academy of Family Physicians in 1997. Additionally, he served on the Indiana Medical Education Board as well as the Indiana Medicaid Therapeutics Committee which he chaired in 2009. In 2004 the Indiana Academy of Family Physicians awarded him the A. Alan Fischer Award for outstanding contributions to education in Family Medicine in Indiana. In 2019, the American Medical Association Women Physicians Section recognized him as an Inspiration Award Honoree for his contributions working to achieve gender equity in medicine.

Since 2014, Dr. Knight served as senior vice president for education at the American Academy of Family Physicians (AAFP) based in Leawood, Kansas where he oversaw all AAFP organizational activities related to medical education, continuing medical education, CME credit system, and journal media. These areas included: education and training of medical students and residents; student interest in the specialty of family medicine; federal policies that affect medical education and healthcare workforce; CME curriculum development, production, and accreditation and regulations; the AAFP's CME credit system; as well as the three journals published by the AAFP. He previously served as chief academic and medical affairs officer for Community Health Network in Indianapolis, Indiana. He also has experience as family medicine residency program director and in private practice in Flora, rural Indiana.

In addition to education, Dr. Knight is committed to promoting patient safety, clinician well-being, equity for women in medicine and physicians in underrepresented categories, physician leadership development, and use of performance improvement tools and techniques to improve healthcare and health outcomes. He led the AAFP's Physician Health First initiative on improving family physician well-being and professional satisfaction. He helped create the AAFP's Annual Physician Well-being Conference. Dr. Knight served on the steering committee for the National Academy of Medicine Action Collaborative on Clinician Well-being.

3:00pm - 3:15pm

Break

## Legislative Update

### - Kelli Waggoner, Managing Partner; Grant Waggoner, Vice President of Governmental Affairs | KWK Management Group, LLC

Join your Academy's Government Relations team for an overview of the IAFP's advocacy efforts since the last legislative session ended, a preview of issues that will impact family medicine during the upcoming 2022 session, and the importance of a strong Political Action Campaign.



Kelli Waggoner was a founding partner of KWK Management Group in 1992. She began her 37-year career in governmental affairs as deputy legislative liaison and assistant to Indiana Governor Robert D. Orr, with jurisdiction over Health and Human Services. Kelli was the governor's liaison with the Indiana State Senate and adviser on healthcare services, in addition to serving as a contact for other state agencies.

In 1989, Kelli joined Krieg DeVault Alexander & Capehart, where she played an instrumental role in building their health policy group and supervised day-to-day legislative activities for the firm's clients. She also developed curriculum and conducted training sessions in legislative and management issues.

Kelli received her BS in Political Science from Ball State University and her Masters Degree in Public Affairs from Indiana University's School of Public and Environmental Affairs. She and her husband Jeff live in Brownsburg, where she serves as a member of the Hendricks Regional Health Board of Trustees.



Growing up in a politically involved family, Grant Waggoner comes by his passion for government naturally. In 2012, he worked as an intern for Hallowell Consulting, managing donor outreach and organizing fundraising events for Indiana Secretary of State Connie Lawson's general election campaign. While serving as a liaison between the consulting firm and campaign, Grant also worked extensively with Sec. Lawson's advance team.

In his role as VP of Governmental Affairs at KWK, Grant works with multiple clients spanning healthcare, education, gaming and more. He represents clients at the local and state levels, before administrative agencies, and in front of the General Assembly. In addition to handling the administrative duties for KWK clients, Grant is responsible for daily client communication during legislative sessions.

Grant is a graduate of Indiana University Bloomington with a BS in Political Science. During his time in Bloomington he served on his fraternity's fundraising team for IU Dance Marathon, raising money for Riley Children's Hospital. Grant is a member of the Governmental Affairs Society of Indiana (GASI), Big Brothers Big Sisters of Central Indiana and a graduate of the Indiana Leadership Forum.



3:45pm - 5:00pm

## **Dementia Update 2021**

### **- Kevin McNulty, DO**

#### **Learning Objectives:**

At the end of the activity, participants will be able to:

1. Briefly relate common types of dementia
2. Efficiently evaluate patient with concern for dementia
3. Discuss Non-pharmacological management
4. Discuss Pharmacological management
5. Describe Aducanumab controversy
6. Discuss issues related to getting the time you need and paid for what you do



**Kevin McNulty, DO**, is a Fellow in Geriatric Medicine at Ascension in Indianapolis, Indiana. He completed family medicine residency at Franciscan Health in 2020 and is board certified in family medicine. He is currently working as full time clinical geriatrician, seeing both inpatient and outpatient consults.

---

## **Saturday, November 20**

8:00am - 9:00am      Registration Open

9:00am - 10:00am      **Migraine: Comprehensive Management in Primary Care**  
**- Louis Kuritzky, MD**

#### **Learning Objectives:**

At the end of the activity, participants will be able to:

- Accurately diagnose migraine in non-pregnant adults
- Discuss migraine and headache red flags
- Develop an appropriate evidence-based treatment plan for patients with migraines

10:00am - 11:00am      **Amyloidosis: Didn't It Used To Be A RARE Disease?**  
**- Louis Kuritzky, MD**

#### **Learning Objectives:**

At the end of the activity, participants will be able to:

- Understand the pathophysiology of ATTR as a member of the protein-misfolding disorders

- Recognize clinical presentations suspicious for ATTR as encountered in the primary care setting
- Become familiar with the non-invasive diagnosis of ATTR cardiomyopathy
- Learn the fundamentals of some currently available pharmacotherapies for ATTR

10:45am - 12:15pm

## **CONCURRENT SESSION (Non-CME)**

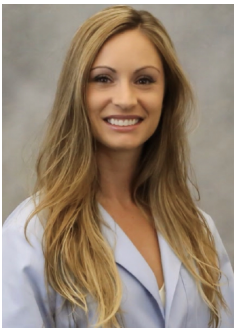
### **Orthovisc Knee Injection Workshop**

#### **- Cassie Mandala, MPAS, PA-C**

DePuy Synthes will host an educational injection workshop focused on knowledge sharing & presenting current data on successful injection techniques for MONOVISC® and ORTHOVISC® High Molecular Weight Hyaluranon.

This presentation and hands-on interactive session will enable the participant to:

- Discuss intra-articular injections of hyaluronic acid (HA) for treatment of knee pain due to osteoarthritis
- Utilize four different knee models to practice injection procedure and treatment accuracy



**Cassie Mandala, MPAS, PA-C**, is a physician assistant with Fox Valley Orthopedic Institute in Geneva, IL. She graduated from Chicago Medical School/Rosalind Franklin University of Medicine and Science. Her primary area of focus is orthopedic surgery.

11:00am - 11:15am Break

11:15am - 12:15pm

## **Thirteen Questions Answered for Managing Patients with the Most Common Hereditary Kidney Disease**

### **- Louis Kuritzky, MD**

Autosomal dominant polycystic kidney disease (ADPKD) is the most common hereditary kidney disorder. Nonetheless, its signs and symptoms are under-recognized by primary care clinicians (PCCs) in clinical practice. Advances in genetics and clinical diagnosis, expanded knowledge of the prognostic role of total kidney volume, the advent of potentially disease-modifying therapies, and the availability of evidence-based guidelines have created new opportunities for improved patient management. PCCs are in a sentinel position for early identification of patients with ADPKD, which is increasingly seen in the primary care setting.

**Learning Objectives:**

At the end of the activity, participants will be able to:

- Identify persons at high risk of ADPKD.
- Conduct a diagnostic evaluation.
- Initiate evidence-based therapy to slow kidney disease progression and treat extra-renal manifestations.



**Louis Kuritzky, MD**, is a family physician and clinical assistant professor in the Department of Community Health and Family Medicine at University of Florida in Gainesville. He received his medical degree from the Medical College of Virginia in Richmond and completed his internship at Miami Valley Hospital in Dayton, Ohio.

Prior to joining the faculty at the University of Florida in 1983, Dr. Kuritzky was a member of the UCLA Family Medicine Clinical Faculty. His current professional society participation includes the American Society of Hypertension (ASH), the American Diabetes Association (ADA), and the American Association of Family Physicians (AAFP). In addition to being board-certified in family medicine by the American Board of Family Medicine, he has received certification as a Specialist in Hypertension by the American Society of Hypertension.

Dr. Kuritzky has given hundreds of presentations nationally and internationally at professional societies. He is on the editorial board of Internal Medicine Alert, and the International Journal of Impotence Research. He has authored over 100 articles in journals including the New England Journal of Medicine, JAMA, Comprehensive Therapy, Hospital Practice, and Patient Care.

12:15pm - 1:30pm

Lunch On Your Own

1:30pm - 4:30pm

## **POCUS Workshop Focused on Sports Medicine/MSK Applications - Jacklyn Kiefer, MD**

Join Dr. Jacklyn Kiefer for an afternoon Point Of Care Ultrasound Workshop, a hot topic for family physicians interested in incorporating POCUS in their practice. The goal of this session is to introduce participants to musculoskeletal ultrasound for diagnosis and treatment of common musculoskeletal injuries. Dr. Kiefer's ultrasound specialty is MSK/Sports Ultrasound including Ultrasound guided injections. View a demonstration of Sports Medicine/Musculoskeletal Applications. Learn about health insurance coverage for these imaging modalities.

### **Learning Objectives:**

At the end of the activity, participants will be:

- Familiar with the basic principles of musculoskeletal/sports ultrasound.
- Able to identify the sonographic appearance of musculoskeletal tissue (bone, nerve, tendon, muscle, ligament)
- Able to recognize patterns and diagnostic criteria for soft tissue injury in commonly injured structures as well as common artifacts
- Able to identify injuries and procedures that would benefit from sonographic visualization and guidance



**Jacklyn Kiefer, DO**, is originally from Brazil, Indiana and attended the University of Notre Dame as an undergraduate. She completed medical school at the University of New England College of Osteopathic Medicine. Her residency training in family medicine was completed at St. Joseph's Regional Medical Center in South Bend and was followed by a fellowship in primary care sports medicine at ProMedica Toledo Hospital. After completing fellowship, Dr. Kiefer stayed on in Toledo in a combined role at the ProMedica Toledo Hospital Family Medicine Residency - serving as the Osteopathic Program director - and at the Primary Care Sports Medicine Fellowship where she was an associate director. She was a team physician for the University of Toledo (NCAA Division 1) for nine years.

Dr. Kiefer is primarily located at the Community South Osteopathic Family Medicine Residency, but she also oversees a sports medicine clinic at Community East Family Medicine Residency and mentors those residents. In addition, she provides sideline coverage for Indianapolis area high schools and professional teams. Professionally, she enjoys all things sports medicine - including regular use of musculoskeletal ultrasound for diagnostics and injections and osteopathic manipulative treatment.

Dr. Kiefer lives in downtown Indianapolis in the Bates-Hendricks neighborhood. She is excited to have moved closer to family - especially her baby niece. Her passions include international travel, SCUBA diving, fitness, reading fiction and Notre Dame athletics.

1:30pm - 3:00pm

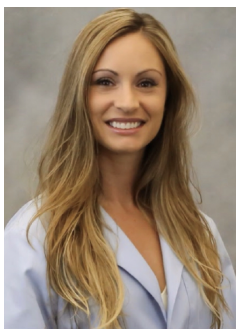
## **CONCURRENT SESSION (Non-CME)**

### **Orthovisc Knee Injection Workshop**

#### **- Cassie Mandala, MPAS, PA-C**

DePuy Synthes will host an educational injection workshop focused on knowledge sharing & presenting current data on successful injection techniques for MONOVISC® and ORTHOVISC® High Molecular Weight Hyaluronon. This presentation and hands-on interactive session will enable the participant to:

- Discuss intra-articular injections of hyaluronic acid (HA) for treatment of knee pain due to osteoarthritis
- Utilize four different knee models to practice injection procedure and treatment accuracy



**Cassie Mandala, MPAS, PA-C**, is a physician assistant with Fox Valley Orthopedic Institute in Geneva, IL. She graduated from Chicago Medical School/Rosalind Franklin University of Medicine and Science. Her primary area of focus is orthopedic surgery.

---

## Sunday, November 21

5:00pm - 8:00pm

### **Virtual KSA Study Group: Asthma - Bernard Richard, MD**

- Complete the 60-question Knowledge Self-Assessment (KSA) with other family physicians in a fast paced virtual format facilitated by a family physician experienced with the topic. We will use Zoom for this session.
- Facilitator will guide you through all 60 questions of the Knowledge Self-Assessment (KSA) module, part of the ABFM's certification process.
- Engage in discussion and debate to help you decide on the correct answer as a group.
- Benefit from automatic reporting of your answers to the ABFM – your account will show you've successfully completed this KSA.
- Earn 8 AAFP Prescribed CME credits and 10 ABFM Certification Points following successful completion of this session.



Born in Gary, Indiana, **Bernard Richard, MD**, stayed close to home as he obtained an undergraduate degree in biology at Indiana University Northwest. He then pursued graduate medical training at the Indiana University School of Medicine before completing his residency at Community's Family Medicine Residency Program, where he served as a chief resident.

Dr. Richard is board certified by the American Board of Family Medicine and a member of the American Academy of Family Physicians as well as the Indiana Academy of Family Physicians. He is a past president of the Indiana Academy of Family Physicians.

As a family physician, he sees patients from birth through adulthood and values the importance of both childhood and adult routine vaccinations to help decrease the overall spread of diseases.



---

## **CME SESSION CREDIT INFORMATION:**

*Application will be made to the American Academy of Family Physicians for up to 13.25 Prescribed credit(s) by the American Academy of Family Physicians. Physicians should claim only the credit commensurate with the extent of their participation in the activity.*

*AMA/AAFP Equivalency: AAFP Prescribed credit is accepted by the American Medical Association as equivalent to AMA PRA Category 1 credit(s)<sup>™</sup> toward the AMA Physician's Recognition Award. When applying for the AMA PRA, Prescribed credit earned must be reported as Prescribed, not as Category 1.*

*DISCLAIMER: The material presented is being made available by the Indiana Academy of Family Physicians for educational purposes only. This material is not intended to represent the only nor necessarily the best methods or procedures appropriate for the medical situations discussed, but rather is intended to present an approach, view, statement, or opinion of the faculty, which may be helpful to others who face similar situations. The IAFP disclaims any and all liability for injury or other damages resulting to any individual participating and for all claims, which may arise out of the use of the techniques, demonstrated therein by such individualism, whether these claims shall be asserted by a physician or any other person. Every effort has been made to assure the accuracy of the data presented. Physicians may care to check specific details such as drug doses and contraindications, etc., in standard sources prior to clinical application. This material may contain recommendations/guidelines developed by other organizations. Please note that although these guidelines may be included, this does not necessarily imply the endorsement of IAFP.*

*CONSENT TO USE OF PHOTOGRAPHIC IMAGES: Registration and attendance at, or participation in, IAFP meetings and other activities constitutes an agreement by the registrant for IAFP use and distribution (both now and in the future) of the registrant or attendee's image or voice in photographs, videotapes, electronic reproductions, and audiotapes of such events and activities.*