

COMPLIANCE REQUIREMENTS

Yorktown, Muncie, Delaware County

Compliance Requirements for Small Construction Sites

Volume 6

Self Inspection

Rule 5 requires permitted sites to practice a self monitoring program. Inspections of erosion and sediment control Best Management Practices (BMPs) must be completed weekly, and after each storm event of 1/2" or more. These inspections must be logged and made available upon request to any EPA, IDEM, or local inspecting authority within 48 hours of request.

Spotlight

- Regular self inspections must be completed.
- Logs must be kept and made available to inspecting authorities

Self Inspection Requirements

Inspections must be completed by a trained individual: The individual completing self inspections must have knowledge of the SWPPP and Rule 5 regulations. Stormwater Management has many resources available to help train individuals including power point presentations. The Stormwater Compliance Inspector should be included in pre-construction meetings. Regionally, there are contractor training workshops available throughout the year. Indiana MS4 communities and IDEM are moving toward requiring certificates of training.

Inspections logs must address the maintenance of existing BMPs to ensure they are working properly: Inspection logs should include problems identified, and corrective maintenance completed on BMPs. Most erosion and sediment controls require maintenance to operate correctly. Accumulated sediments should be removed frequently and materials should be checked periodically for wear.

Identify additional measures needed in order to stay in compliance: When existing BMPs are failing, problems should be noted and the designer should be consulted to find new BMPs that will be more effective. (SWPPP must reflect any changes made)

Name of individual performing inspection

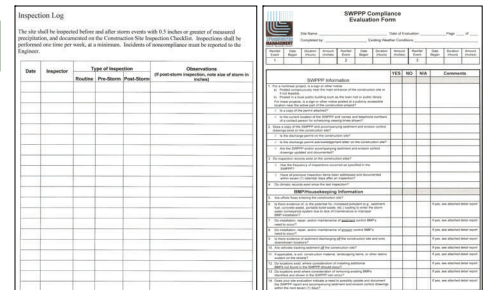
Date of inspection

Resources

Erosion and sediment control practices for construction activities are described in detail in the National Menu of BMPs for Stormwater Phase II, which can be found at <http://www.epa.gov/npdes/stormwater>.

Free Forms

Self inspection forms and record logs may be downloaded from our website at www.wishthefish.com



FREE Rain Gauge
Stormwater Management will provide you with a free rain gauge to help you track the amount of rainfall on your site.



Questions or Comments? Email us at:
tcecil@msdeng.com , or call 765-749-1114