

State Road 37 - Maximizing Benefits, Minimizing Impact

Agenda – Meeting is from 6:30 p.m. to 8:00 p.m.

Welcome: Dana Monson, Johnson County Development Commission

Host: Chris Hamm, HWC Engineering

Preparing for Corridor Growth

Sarah Rubin - INDOT Project Manager, I-69 Section 6

- The importance of resident and public official involvement
- Communities can influence & maximize benefit from corridor changes & growth
- I-69: Impact on State Road SR37

Funding Infrastructure

Larry DeBoer - Purdue University professor focusing on state and local government public policy, and the fiscal impact of economic development.

- How a community funds development

Managing Growth

Greg Goodnight - Kokomo Mayor, 2008 to present

- How Kokomo is managing growth and getting the public involved
- How to leverage resources available for development
- Infrastructure requirements for an area to grow properly

Closing Comments & What's Next - Chris Hamm

After the Meeting – 8 to 8:30 p.m.

Please spend some time visiting the displays set up in the hall. Information includes large maps of the area, examples of corridor development in other areas of Johnson County. Elected officials and planning officials are encouraged to stay and discuss options, ideas and issues with residents.



Chris Hamm, HWC Engineering - Senior Planner

In his role with HWC, Chris has aided private and public sector clients in the development and implementation of strategic economic development plans, redevelopment plans, master plans and other planning related activities. Chris served 18 months as the contracted President and CEO of the Greater Kokomo Economic Development Alliance. He began his career with the City of Noblesville, over 11 years he worked as their senior planner and the community's first Director of Economic Development. He oversaw the development and implementation of the Noblesville Corporate Campus Plan, and the Downtown Strategic Redevelopment Plan. After Noblesville, Chris formed a consulting business focused on master planning and economic development.

Sarah Rubin, Indiana Dept. of Transportation - Project Manager, I-69 Section 6

Sarah is the Deputy Director of Public-Private Partnerships and I-69 Section 6 Project Manager for the Indiana Department of Transportation. Her prior work experience includes project management at two additional governmental agencies and economic development consulting at a privately held Indiana company. Sarah holds a Master of Public Affairs from SPEA at IU Bloomington in public finance, policy analysis and economic development.

Larry DeBoer, Ph.D., Purdue University - Professor of Agricultural Economics

Larry DeBoer is a professor and extension specialist in Agricultural Economics at Purdue University. He studies state and local government public policy, including government budget and taxing options, issues of property tax assessment, local government revenue options and the fiscal impact of economic development. He contributes to the annual state revenue forecasts. He helps maintain a model of the property tax used by the Indiana state legislature to analyze the impacts of assessment and tax policy changes. DeBoer directed a study on market value property tax assessment for the Indiana State Board of Tax Commissioners during 1995-97. He directed the staff work for Governor O'Bannon's Citizen's Commission on Taxation, 1997-98, and contributed research to Governor Daniels' Commission on Local Government Reform in 2007. DeBoer was the 2009 recipient of Purdue's Hovde Award for service to the rural people of Indiana, and the 2010 recipient of the Indiana Association of Public School Superintendent's Distinguished Service Award.

The Honorable Greg Goodnight, Mayor - City of Kokomo, Indiana

Greg Goodnight has served as Mayor of the City of Kokomo since January, 2008. A native to Kokomo, Mayor Goodnight has focused on promoting strong and sustainable economic development, improving quality of life and lowering spending by promoting innovation and efficiency. His mayoral accomplishments include, the City's first fixed-route bus system in decades; developed innovative new economic development programs and incentives; and launched a downtown revitalization initiative. In recognition for these achievements, the City has received the Indiana Association of Cities and Towns Community Achievement Award, the Harvard University's Bright Ideas Award, the Indiana Main Street Association's Design of Downtown Public Improvements and Community Impact awards, and the National Softball Association's Most Outstanding Park award.



As of April 1, 2015

1. The Federal Highway Administration (FHWA) issued a Notice of Intent to resume the environmental studies for I-69, Section 6 in October 2014. The environmental studies begins with a Notice of Intent (NOI) and concludes with a Record of Decision (ROD).
2. The environmental studies will be part of an Environmental Impact Statement (EIS). An EIS is a decision-making document that describes the process of assessing benefits and impacts of a proposed project. The document will include the consideration of a range of reasonable alternatives, potential impacts and benefits of each alternative, and the estimated cost.
3. The environmental studies for I -69 have followed a tiered process. The Tier 1 EIS determined that I-69 should be constructed between Evansville and Indianapolis and identified a preferred corridor to follow. The entire corridor was divided into 6 sections of independent utility and Tier 2 environmental studies were required to consider both the Tier 1 goals and Tier 2 goals that consider more local needs. The Tier 1 corridor for Section 6 follows SR 37 between Martinsville and Indianapolis.
4. The Section 6 Tier 2 environmental studies are anticipated to take 2-3 years.
5. FHWA and INDOT are considering studying alternatives outside the SR37 corridor due to the potential for increased impacts and/or changed conditions since the original 2004 decision to utilize the existing SR37 corridor between Martinsville and Indianapolis.
6. The Section 6 project is currently in the scoping process to determine whether alternatives outside the SR37 corridor will be considered for evaluation. Resource agency input and public comments will be considered when making the decision whether to include the consideration of alternative outside the SR37 corridor in addition to the SR 37 corridor.
7. INDOT opened a Section 6 Project Office on April 6, 2015 at 7847 Waverly Road, Martinsville, IN. The phone number is (317) 881-6408. The office is open Monday – Friday from 9 am to 4 pm and will be closed on state holidays. INDOT and its project representatives will staff the project office.
8. INDOT hosted public information meetings on February 23rd and 25th to solicit public input on whether alternatives outside the SR37 corridor should be considered. Feedback from the meeting is being considered and evaluated during the development of the project's Purpose and Need Statement and conceptual alternatives.
9. Notice of Survey letters were sent to property owners near the SR37 corridor in February 2015. Receipt of a Notice of Survey letter does not indicate a property will be impacted by the project. The intent is to notify project landowners that project staff may be near or on private property for the purpose of data collection.

I-69 EVANSVILLE TO INDIANAPOLIS TIER 2 STUDIES

Section 6 – Fact Sheet



10. INDOT has not yet identified a funding mechanism for the construction of Section 6.
11. Section 6 will not be tolled.
12. A Section 6 construction schedule has not yet been established.
13. Additional information on the project can be obtained at www.i69indyevn.org.

Submit Questions & Comments

To keep the meeting moving we will not be answering questions this evening. We ask that you submit your questions and we will answer them all on AspireJohnsonCounty.org with two weeks after the end of this meeting.

There are two ways to submit your questions:

Written Submission: You will find a note card in this folder, you can write your question(s) on the card and hand it to one of our volunteers who will be around to collect cards.

Submit Via Your Smartphone or Tablet:

You can submit questions online at this website: <http://bit.ly/AJCgrowth>
Type the link exactly as it is shown to visit a mobile friendly website. Type in a nickname, click "Join" and you may submit as many questions, or comments, as you care to provide. Some comments and questions will appear on the screen during this evening's meeting. Answers to questions will be posted on the Aspire Johnson County website in about two weeks.



Click To Be
Taken to the Site

Feedback Survey

We want to know what you thought of tonight's presentation and give you an opportunity to provide feedback and provide you opinion on managing growth. If you will go to AspireJohnsonCounty.org/survey in the next 48 hours and fill out the online survey, you will be eligible to win a gift basket filled with goods and services from Johnson County businesses. The survey will take about ten minutes.

If you do not have internet access a few printed copies of the survey will be available at the registration table in the entry.

Thank You!

We want to thank the following Johnson County Businesses for contributing to the "Best of Johnson County" gift basket:

Suzy's Teahouse & Bakery – Franklin

Eric Luzier Photography – Greenwood

Middle Davids Candles – Franklin

Franklin Muffler and Brake – Franklin

Franklin College – Franklin

The Historic Artcraft Theater – Franklin

Tulip Treats – Greenwood

Not Just Popcorn - Edinburgh

Generations Custom Auto & Collisions

Ella's Frozen Yogurt & More – Greenwood

Taxman Brewery, Bargsville, catered the food for tonight's speakers and volunteers.

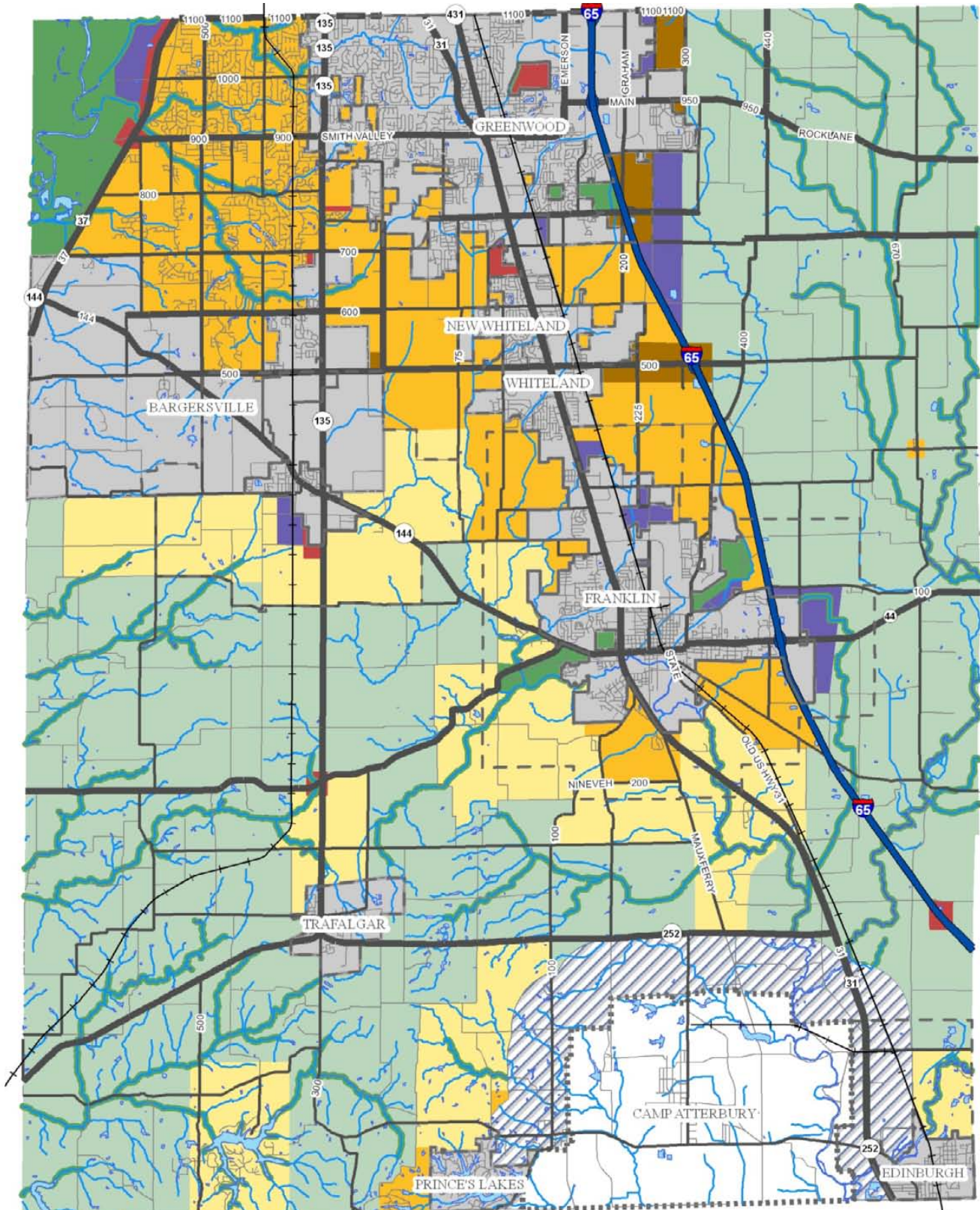


North-South Connectivity In the Heartland

Michigan • Indiana
Kentucky • Tennessee
Mississippi • Arkansas
Louisiana • Texas



Figure 3-2: Future Land Use Map



Future Land Use Map

- | | | |
|--------------------------------|--------------|----------------------|
| Extra-Territorial Jurisdiction | Commercial | Rural Residential |
| Incorporated Community | Conservation | Suburban Residential |
| Camp Atterbury 1-Mile Buffer | Industrial | |
| Agricultural | Mixed Use | |

Bargersville Future Land Use Map State Road 37 & 144

Official Future Land Use Map

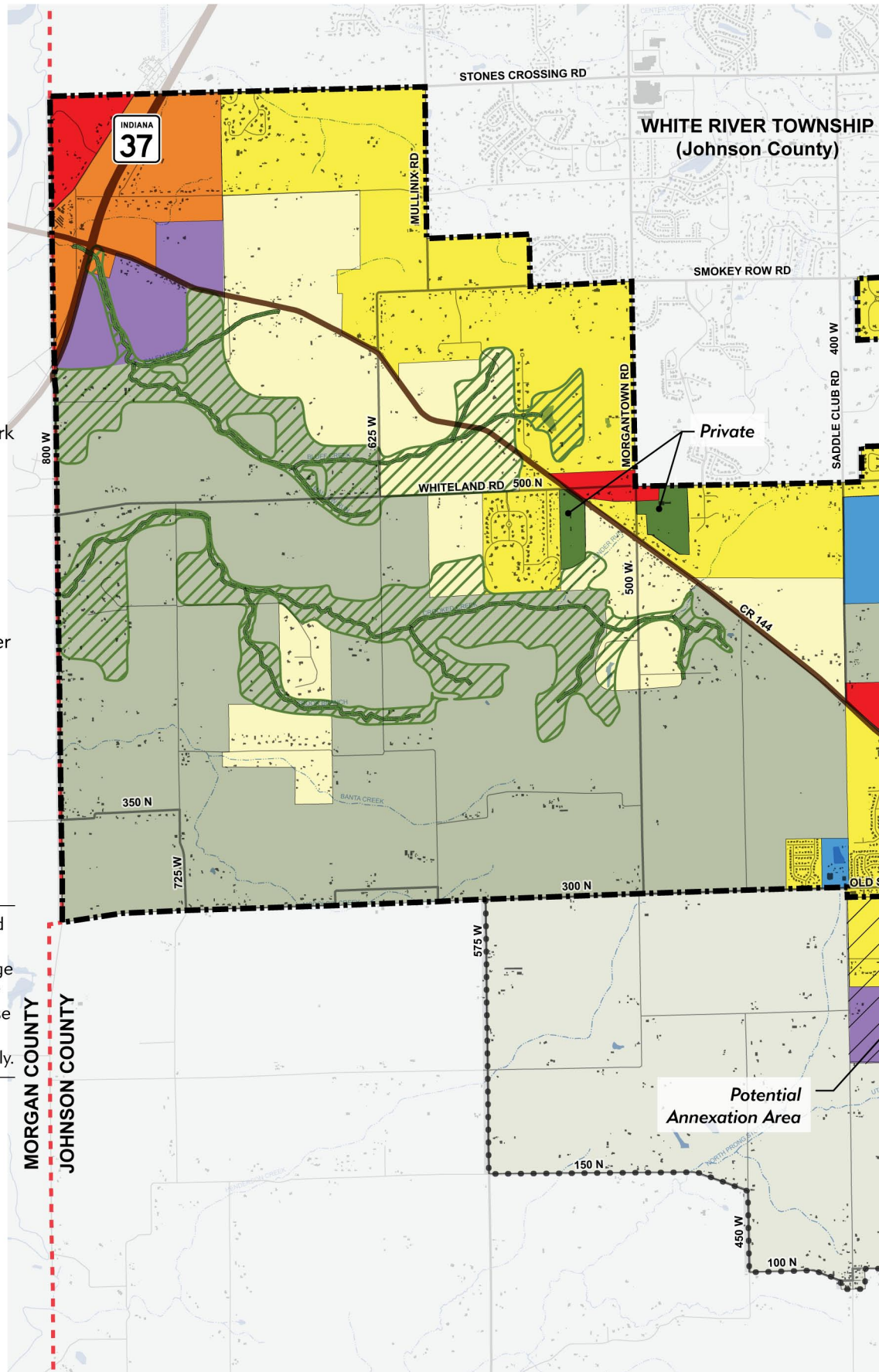
LEGEND

- Rural Residential
- Suburban Residential
- Urban Residential
- Mixed-Use Highway Commercial
- Mixed-Use Neighborhood/Community Commercial
- Light Industrial / Business Park
- Industrial
- Municipal / Institutional
- Recreation / Conservation
- Wooded Land
- Agricultural
- Corridor Overlay (Zoning Ordinance - 500' from Center Line)



Source: Base Mapping - Johnson County GIS data.

NOTE: This is the Official Future Land Use Map for the Town of Bargserville. There are two additional maps on page 143 intended to be used as guides for future updates to this Official Land Use Map as the community develops and utility systems are extended accordingly.



ASPIRE

JOHNSON COUNTY

Imagining . Inspiring . Impacting a Great Community

Founded by Johnson County Development Corporation (JCDC) with financial assistance from the Johnson County Community Foundation (JCCF), Aspire Johnson County began in 2013 as a county-wide economic development initiative aimed at making Johnson County a more desirable place to recruit business and talent.

This comprehensive approach has grown to over 130 people working collaboratively in four key areas to improve our community per the Aspire mission, which is “*To make Johnson County a destination to live, work, and play*”. The four key areas are: 1. Talent Retention & Attraction, 2. Branding, 3. Infrastructure, and 4. Quality of Life. Each month new residents and/or business and community leaders are coming to the table to get involved because they want to make a difference in their community.

Aspire’s progress to-date:

- Logo and website created: www.aspirejohnsoncounty.org.
- Recipient of a *Community Conversations* grant from Indiana Humanities, OCRA and Ball State’s Bowen Center for Public Affairs. Selected due to unique county-wide approach which they have found to be uncommon throughout Indiana.
- Talent Team partnered with Endress+Hauser and Central Nine to conduct its First Annual Manufacturing Career & Education Forum aimed at middle school STEM students, their parents, and educators. Held in late June, 2014, over 300 attendees participated. In addition, they are working on an employer needs assessment and a second Career & Education Forum focused on Health Science.
- Branding Team has been working collaboratively with county elected officials regarding the need for a destination marketing organization. In addition, they launched Aspire’s new logo and website, and have been asked by the volunteers of the Journey Johnson County website to take control of that site and maintain it.
- Quality of Life Team has completed an assets survey and is distributing the survey to civic and business groups across the county.
- Infrastructure Team is analyzing the comprehensive plans of all municipalities for gaps and opportunities, then will share the results with elected leaders. In addition, they have begun to raise awareness and facilitate conversations with area elected and appointed officials about I-69 Section 6.

For more information on Aspire Johnson County visit www.aspirejohnsoncounty.org.

For more information on Johnson County Development Corporation visit www.jcdc.org.



ASPIRE JOHNSON COUNTY

Imagining . Inspiring . Impacting a Great Community

How to become involved

Aspire Johnson County is always seeking new members and encourages participation with the teams. Below are several options for becoming involved.

- Connect with us at www.aspirejohnsoncounty.org Send us your contact information via the “connect with us” button and we will add you to the distribution list.
- Contact us directly at the Johnson County Development Corporation 317-736-4300.
- Contact us directly via email at cmorphew@jcdc.org or dmonson@jcdc.org
- Come to a large group meeting. The meetings are held the third Thursday of each month from 8:30 to 10:30 am. The meeting locations change each month between Franklin and Greenwood, however, the meeting locations are posted on the Aspire Johnson County website under events.

www.aspirejohnsoncounty.org

Visit our website to learn more about Johnson County and Aspire! Some information you will find there include:

- Discover who is involved, upcoming events, and information on Aspire’s activities
- Engage with the teams and the projects they are moving forward
- Support for Aspire comes from a variety of sources. Learn more on the website
- Learn about upcoming events in our county such as these Community Conversations
- After each conversation, a synopsis and answers to submitted questions will be available
- Find links to other Johnson County organizations and links to organizations involved in the Community Conversations Series



2797 N. Morton Street, Suite F | Franklin, Indiana 46131 | 317.736.4300



Community Conversation Series

What do you think about our community's future?

Aspire Johnson County will conduct four Community Conversations to evaluate our assets, collect our “best practices” and determine our current and future needs. Your input will help our community better understand our past and prepare us for the future.

To help with planning, we ask participants to register for the free events at www.aspirejohnsoncounty.org/communityconversation/. The four sessions are:

SR. 37, Preparing for Growth: Maximizing Benefits, Minimizing Impact

April 23
6:30-8 p.m.

Southland Community Church

5800 West Smith Valley Road
Greenwood, IN 46142

Speakers

Sarah Rubin – Indiana Department of Transportation Project Manager

Greg Goodnight – Mayor, Kokomo, Indiana

Larry DeBoer - Purdue University Professor

Talent Retention and Attraction

Cradle to Career

May 7, 2015

6:30 p.m.

Greenwood High School Auditorium

615 West Smith Valley Road

Greenwood, Indiana 46142

Speakers:

Dave Dresslar, Executive Director of The Center of Excellence in Leadership of Learning at the University of Indianapolis

Jeanna Keller Berdel, Sr. Strategy Officer at the Lumina Foundation

Quality of Life

Showcase of Life, Fun in Johnson County

June 4, 2015

5:30 to 8:30 p.m.

Johnson County National Guard Armory

325 Minute Man Way

Franklin, Indiana 46131

Featuring the Johnson County Marketplace with unique Johnson County Businesses and an interactive discussion of the amenities in our county

Our Stories:

Johnson County

June 23, 2015
6:30 to 8 p.m.

Johnson County Museum of History

135 North Main Street
Franklin, Indiana 46131

Join us for an interactive discussion about our brand, our story, and our vision for Johnson County followed by a visioning message.

