

2009

THE RATTLE

GRAND CHAPTER

FOUNDATION CHAPTER

ORWICH HOUSING



Remembering

Howard R. Alter, Jr.
Omega '41

Theta Chi for Life



We are all familiar with the phrase “Theta Chi for Life.” No man optimized this phrase more than Howard R. Alter, Jr. Like so many members of our Fraternity, I had the honor and privilege to call Howard a friend and a brother. I was able to visit with him a few weeks before his passing, and of course we talked about the Fraternity and what it means to be a Theta Chi.

Howard would frequently point out that no member of our Fraternity should ever say he “was a Theta Chi.” We all understand that “Theta Chi for Life” means that we are members until we join the Chapter Eternal. But “Theta Chi for Life” should mean more than being a member in a passive sense; for each of us, it should mean that we are brothers in an active sense. This is how Howard R. Alter, Jr. lived his life.

As a brother in Theta Chi Fraternity, there are many ways that you can actively lend “an Assisting Hand” to our chapters and fellow brothers, be they undergraduates or alumnus members.

To our undergraduate brothers, you can serve as a mentor and advisor. You can serve on the board of an alumni housing corporation or just roll up your sleeves and help with chapter house improvement projects. You can work side by side with the undergraduates as they extend a helping hand to the community. Even simply attending Homecoming activities and showing an active interest in the undergraduates and their chapter shows that you still care about Theta Chi. These are just a few ideas—there really are unlimited opportunities! Please also remember that you can volunteer to work with any chapter, not just the one where you were initiated!

I would encourage you to continue to build the lifelong friendships forged during your college years. Reconnect: Pick up the phone and call a chapter brother; go to lunch with a brother or get a group of brothers together for a round of golf; make new friendships by attending Theta Chi alumni events in your area. I am constantly reminded that there is nothing more valuable than the “True Friendship” that our Fraternity inspires.

And of course, I would ask you to support Theta Chi Fraternity’s cardinal principles of True Friendship, Loyalty to Alma Mater and the Mutual Benefit and Improvement of our Members by supporting our Foundation Chapter. Your tax-deductible donations support the educational mission of Theta Chi in many ways. Thanks to your Helping Hand we are seeing our chapters grow in size and number, we are seeing grade point averages improve, and we are seeing more of our brothers being recognized as campus leaders. Additionally, we are able to offer direct scholarship assistance to those brothers who need and have earned it the most.

Howard R. Alter, Jr.’s influence on Theta Chi Fraternity can never be matched. But it can move us all to BE “Theta Chi for Life.”

Most fraternal regards,

A handwritten signature in cursive script that reads "Douglas Allen".

Douglas Allen (Delta Beta/Georgia '90)
National President

Editor

Bart Zino, Iota Theta '08

Contributing Writers

Shawn Bennett, Gamma Tau '92

Rich Boroway, Delta '73

Al Bulliner, Beta Sigma '65

Joe D'Amore, Eta Pi '77

Joaquin Matho, Epsilon '07

Mike Mayer, Epsilon Phi '04

Marvin McConaghy, Alpha Phi '72

Jim McMahon, Zeta Epsilon '79

Bill Russo, Epsilon Xi '02

Graphic Design

Jody Toth

Published by:

Maury Boyd and Associates, Inc.

The International Headquarters and Foundation staff are located at:

3330 Founders Road
Indianapolis, IN, 46268-1333
PHONE: 317-824-1881

FAX: 317-824-1908

EMAIL: ihq@thetachi.org

WEBSITE: www.thetachi.org

To reach the Foundation Office, please contact:

PHONE: 317-824-1902

E-MAIL: foundation@thetachi.org

The Rattle is the official Alumnus publication of the Grand Chapter of Theta Chi Fraternity. It is provided to: undergraduate members of Theta Chi chapters, colonies, and interest groups; alumnus brothers for three years after graduation; anyone who has provided a financial contribution to the Grand Chapter from 1966-86 and/or to the Foundation Chapter since 1986; and to administrators of numerous colleges, universities, and Greek organizations.

Please send any materials for publication, as well as address changes to:

3330 Founders Road
Indianapolis, IN 46268

Photo Contributions:

Please share photos of your events! Print publication requires photos captured in a high resolution (equivalent to a minimum of 300 dpi, and preferably 600 dpi). Set your camera setting in the highest setting for maximum file size. Please use a flash to make sure the subjects are well lit. Large photos can be posted to an ftp site or mailed on a CD. Contact the editor at: ihq@thetachi.org for more information.



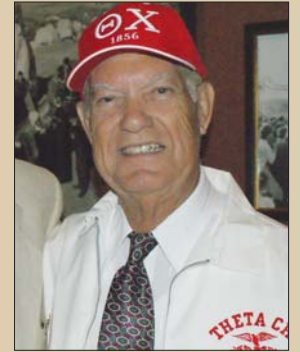
Remembering a brother

PAGE 4



Thanks to our donors

PAGE 15



He put man in space.

PAGE 26

- 4 **COVER STORY: REMEMBERING HOWARD ALTER**/A former field man shares his insights, experiences, and lessons learned from “Mr. Theta Chi” himself, both on and off the road
- 9 **IHQ NEWS, EXPANSION UPDATES, NEW STAFF**/Theta Chi celebrates three installations this year, welcomes some new additions to the staff, and says goodbye to a longtime director
- 11 **CHAPTER NEWS: UPDATES FROM OUR ALUMNI AND UNDERGRADUATES**/Two chapters mark 100 years of Theta Chi, and a look at what our brothers are doing from around the country
- 14 **FOUNDATION: PROGRESS WITH OUR MISSION**/A message from Warren Hoffman
- 15 **2008/09 FOUNDATION DONORS LIST**/Theta Chi says “thank you!” to all of its generous donors this year
- 26 **FEATURE: CHARLES “BUDDY” DAVIS: AEROSPACE PIONEER**/How one Theta Chi brother literally sent America to the moon
- 30 **CHAPTER ETERNAL**/A list of our brothers who joined the Chapter Eternal this year; one brother reflects on the passing of Richard “Dick” Meyer

FROM THE EDITOR

We are very excited to present you with the 2009 issue of *The Rattle*. This edition holds particular significance because all future issues will be distributed online.

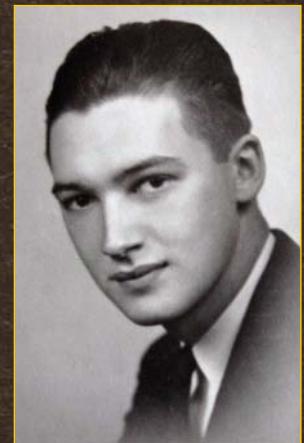
There are several reasons why we are doing this. The constantly rising costs of developing, printing, and distributing *The Rattle* to our readers has reached an unprecedented high. Publishing online will allow us to continue to provide you with a top-notch magazine without the drain on our Fraternity's resources. Our transition is also consistent with a larger movement within the interfraternal community. Many national men's and women's organizations are making the switch as well in order to reach more alumni, undergraduates, and interfraternal friends than ever before.

To ensure that everyone receives a copy of future editions, we are asking our readers to visit our website at www.thetachi.org and update their contact information. The process is very simple and only takes a few minutes of your time.

Of course, if you'd prefer to receive a printed copy, we'd be more than happy to accommodate you. You need only let us know by visiting our website and updating your information and preferences.

We are very excited about the upcoming changes to *The Rattle*, and we hope you are as well. As always, we welcome your feedback and input. Enjoy, brothers!

Fraternally,
Bart Zino, Iota Theta/UCF '08



Howard R. Alter, Jr.
Omega/Penn State '41

National President
1962–1966

Executive Director
1968–1984

National Board of Trustees
President 1992–1994

NIC Gold Medal recipient
1993

Fraternity Executives Association
President 1978–1979

Remembering Howard Alter

BY MARVIN MCCONAGHY (ALPHA PHI/ALABAMA '72)



For many field men, stopping by Stockland Farm to see Howard had become an often anticipated tradition. From L–R: Ty Humpert (Theta Tau/Western Michigan '97), Howard, Mike James (Gamma Phi/Nebraska Wesleyan '96), Jeff Roberts (Delta Alpha/Linfield '97), and Randy Harrington (Gamma Phi/Nebraska Wesleyan '97).

The first time I met Howard Alter, I was two weeks into my term as chapter president and a sophomore at the University of Alabama. He and Assistant Executive Director Dale Slivinske had been in the Deep South at a conference and decided to drop in on the chapters in Alabama. It was a chaotic Sunday night before student government elections on Monday, and the campus political machine was meeting in the basement at the moment Howard and Dale arrived. Last-minute campaign workers were in and out of the Theta Chi house, which was being used as a staging area.

I had been told long before that when the day came that I met Howard Alter, I would know where I stood with him, that he was nonsense and to the point. Now that the day had arrived, I was a wreck. At a hastily called house meeting, Howard made very brief remarks and, wanting to hear what was on our

minds, solicited questions. The first came without hesitation from an upperclassman intending to test the new young chapter officers: “Mr. Alter, what do you think of our machine politics?” The response was quick: “First, my name is Howard...” I don’t recall the rest of the answer, but I realized at once that Howard could size up people and situations fast. I learned from that first encounter that he was someone on whom I could count for rock solid support.

Howard Alter was a man upon whom many counted. He was not only an only child, but his cousin, Jim Booth, was the only child born to any of his parents’ brothers and sisters. They would be the ones on whom aunts and uncles would rely as they aged. He was the son who went to New Guinea in World War II where he served as a Seabee, then returned to help his father run the family feed and grain business and assume the responsibility for his extended family.



Howard being honored at the 1984 Convention with National President George Kilavos (Delta Xi/Valparaiso '55).

When then-Executive Director George Chapman, a founder of Howard’s Omega Chapter, asked him to serve the Fraternity as a deputy regional counselor, George already knew that he could count on Howard just as the undergraduate chapter had when he was

elected treasurer his junior year and president his senior year. As he began his service, the chapters in western Pennsylvania found a mentor and a champion. Soon he became regional counselor, and in 1960 “his” chapters nominated him to Theta Chi’s Grand Chapter.

Howard turned to his mentor, Executive Director Chapman, and explained that he had business and family responsibilities and that he just wasn’t prepared for that investment of time. He recalled that Mr. Chapman wryly responded, “What makes you so certain you would get elected? You always lose once before you get elected.” Whether his mentor was giving him serious advice or dodging a declination of the nomination, I suppose we will never know. Lose, however, Howard did not. He was elected to a four-year term and began that service as National Chaplain of Theta Chi.

In 1962 in Seattle at the 106th Anniversary Convention, Howard Alter was elected National President, and service at the Fraternity’s highest levels would distinguish the rest of his life. Two years later in Miami he was re-elected National President. During his tenure, Theta Chi experienced phenomenal growth, installing 13 new chapters.

At the 1966 convention, Howard let it be known that after four years as National President, it was someone else’s turn to lead the Grand Chapter, and he became National Treasurer.

The following year, George Chapman announced his intention to retire after an



Interfraternal and alumnus brothers gather for the 2005 Slivinske Dinner. Brother Slivinske was a major part of Howard’s life.

unprecedented 20 years as Executive Director. Immediately a search committee was formed to find a successor to the irreplaceable Chapman. Scores of applications were received.

One Sunday Spencer Shank, a member of the search committee, drove to the Alter family farm to brief Howard on the committee’s deci-

sion. As they walked along the pasture fence after lunch, Brother Shank informed Howard that the committee had made a unanimous selection—Howard Alter. Howard protested, “I didn’t apply; I am not a candidate,” to which Brother Shank replied, “We know that, but you are our choice.” It was no mistake that the committee had sent Spencer Shank, as he had served as Howard’s National Vice President and was a persistent man who knew him well.

Howard continued to protest, citing family responsibilities and the 325-mile distance to the National Headquarters in Trenton, New Jersey. The committee had considered that and had agreed in advance to permit Howard to move the headquarters to Pittsburgh. Protestations turned into negotiations—but not the kind you might imagine. Given the difficult times into which college fraternities were entering, Howard refused the salary that was being offered, insisting on some 40 percent less. Eventually, Brother Shank made perhaps his greatest contribution to Theta Chi Fraternity by wearing Howard Alter into submission, and thus began the seminal journey of Howard’s life and for Theta Chi.

On January 1, 1968, Howard Alter became Executive Director of Theta Chi. He left his beloved Stockland Farm and drove six hours to Trenton, New Jersey, to begin the relocation of Theta Chi’s headquarters. However, at the



Howard at the Executive Office in 1984. Howard served Theta Chi as Executive Director from 1968 until 1984.



Associate Executive Director Dale Slivinske presenting Howard Alter with the Theta Chi for Life Award in 1983.

headquarters he found an office staff of exceptional tenure and experience. Mabel Oswaldt had served not only the entire tenure of George Chapman, but also that of Frederick W. Ladue and nearly the entire tenure of Alfred Aldridge. Gloria Metzger was in her 25th year. Howard quickly recognized the value of their experience and their loyalty. Almost instantly, he made the decision to keep the National Headquarters in Trenton and commute to Pittsburgh on weekends to attend to his family. That was a weekly 12-hour roundtrip commute that lasted 18 years.

The late '60s and '70s were difficult times for the college fraternity movement, rife with an anti-establishment culture, individualism, and discord at the national levels of many fraternities and interfraternal organizations. Yet at the helm of Theta Chi was the steady hand of Howard Alter, who with George Kilavos as National President during most of those years, called us to our core values. He was a friend to every brother who sought his helping hand, and was once again the man to be counted upon. Never afraid to listen, but with a candor and courage of conviction that was integral to his being, Howard led Theta Chi through the storms. He did the same in the interfraternal world as well, serving as president of the Fraternity Executives Association and helping heal the rift in the National Interfraternity Conference, encouraging the return of those who had withdrawn. At his side was his assistant and the man he would groom to be his replacement, Dale Slivinske, another strong and courageous man.

Howard Alter retired in 1984, becoming Executive Director Emeritus and was succeeded by Brother Slivinske. He was hardly through, however. He served on the National Board of Trustees for 10 years in his "retirement" including a stint as president, making

Bill Booth Initiated into Theta Chi Chapter

BY JOE D'AMORE (ETA PI/EAST STROUDSBURG '77), NATIONAL SECRETARY

On Saturday, March 7, 2009, William Booth of Plum Borough, Pennsylvania, was initiated into Theta Chi Fraternity as the fifth initiate of our Theta Chi Chapter. This special Chapter of our Fraternity was established to honor deserving men who did not have the opportunity to join the Brotherhood of Theta Chi as undergraduate members. The Theta Chi Chapter was approved by the National Convention on August 20, 1988. On May 3, 1990, Bruce D. Slivinske became the chapter's first member.



IHQ Staff members and Bruce Slivinske with Bill Booth at Stockland Farm. Front L-R: Fernandez, Carmichael, Taylor. Back: Hill, Zino, Fischer, Slivinske, Booth, Burns, Mayer.

Brother Booth is the cousin of Theta Chi's Executive Director Emeritus, Howard R. Alter, Jr. (Omega/Penn State '41). For many years, Howard and Bill shared a special relationship, far beyond being cousins. Bill remarked that Howard often acted as his surrogate father after his own father passed away years ago. It was Howard's wish that Bill be initiated into Theta Chi Fraternity as they shared much in their lives together, and to share Theta Chi would be very special for both of them.

The Ritual was conducted at the Presbyterian Senior Care Center in Oakmont, Pennsylvania, at 1 p.m. to accommodate Brother Alter, who had been admitted to the facility at that time.

The brothers who participated in the initiation ritual represented 14 different Theta Chi chapters from all over the United States. In attendance were:

President: P. Alan Bulliner (Beta Sigma/Lehigh '65)

Vice President: Rev. Dr. John J. Lolla, Jr. (Beta Omicron/Cincinnati '77)

Secretary: Bruce Slivinske (Theta Chi/GC Honorary '90)

Treasurer: Phillip Burns (Iota Lambda/Longwood '08)

Marshal: Carlton F. Bennett (Zeta Pi/Old Dominion '72)

Chaplain: Dale Taylor (Alpha Phi/Alabama '69)

Historian: Jonathan Fernandez (Tau/Florida '08)

Librarian: Jason Carmichael (Gamma Chi/Randolph-Macon '07)

First Guard: Michael J. Mayer (Epsilon Phi/Central Missouri '04)

Second Guard: Benjamin R. Hill (Eta Kappa/James Madison '02)

Assistant Treasurer: Corey Fischer (Iota Beta/Missouri State '08)

Alumnus Charge: Howard R. Alter, Jr. (Omega/Penn State '41)

Additional Brothers in Attendance: Joseph R. D'Amore, Jr. (Eta Pi/East Stroudsburg '77) and Bart Zino (Iota Theta/Central Florida '08).

Prior to the initiation, the attendees shared brotherhood at a special luncheon conducted at the facility.

Photo by Kyle J. Weaver



Photo by Kyle J. Weaver



More than 300 brothers and guests filed into St. Thomas of Villanova Church at Villanova University to honor Brother Alter at a memorial service held on July 17, 2009, during the summer Chapter Leadership Conference.

him the first to serve in all three of the Fraternity's highest offices. Throughout the remainder of his life, he was a fixture at national conferences and conventions, imparting sage wisdom, and using his gift for relating to all generations of Theta Chi. He served on the board of the Foundation Chapter and was elected to the North American Interfraternity Conference's board of directors. In 1993, the

NIC bestowed its Gold Medal, the highest award in the fraternity world, on Howard for a lifetime of service to Theta Chi and the fraternity movement. He was the recipient of every award that Theta Chi can bestow upon an alumnus brother, and Theta Chi's highest chapter award is named for him. Other awards filled his mantle including the Fraternity Executives Association's highest honor, and

those of Phi Kappa Psi, Zeta Beta Tau, Lambda Chi Alpha, and many others.

Howard Alter's greatest contribution to Theta Chi, I believe, came in the form of a profound and courageous demonstration of the essence of fraternity—Theta Chi's Helping Hand. In 1987 shocking news came that long-time associate and now Executive Director, Dale Slivinske, had been stricken with AIDS—a diagnosis that at the time was a certain death sentence. Howard immediately began to assist with the daily operations of the headquarters again. Moreover, with grace and courage in the face of this feared disease, he joined Dale's brother Bruce in becoming a constant caregiver. Dale derived incredible strength and ultimately peace as he drew on the brotherly love of these two men—one his brother by birth and the other his brother by Theta Chi.

As Theta Chi brothers and leaders of other national fraternities and sororities streamed to Brother Slivinske's bedside as he fought his losing battle, all were touched by Theta Chi's love, so movingly brought to life in the person of Howard Alter. As evidence, on the anniversary of Dale's death, over the next 20 years a group of interfraternity leaders and brothers closely associated with Dale have gathered from across the country at the black tie Slivinske Dinner in Pittsburgh to celebrate his life and honor Howard's courage, grace, and fraternal love.

The last time I saw Howard was in his hospital bed at his beloved home at the farm a few days before his death. He opened his eyes, acknowledged my presence, and gave me the opportunity to tell him of his impact on my life, of the lessons he taught me, the example he set, and the memories that will remain with me until memory itself becomes a sealed book. While I spoke for myself, I am certain that we both knew that I must be speaking for scores of us who were privileged to have had him share so generously part of his life with us.

A week later I would be back, honored to join past National President David DeVol and five other of "Howard's boys"—graying former field staffers—to bear him to the hilltop at the Plum Creek Cemetery, where were gathered eight Theta Chi National Presidents, scores of past National Officers, current and former staff, undergraduates, interfraternity friends, neighbors, and family. There, with military honors and the gratitude of Theta Chi for the richness of his life so selflessly shared, we said our farewell to Howard Russell Alter, Jr., Omega '41, knowing that his influence on Theta Chi lives on.



Brothers from Theta Chi's newest chapter, Iota Mu at the University of Missouri.

One chapter chartered, two reinstalled

BY MIKE MAYER (EPSILON PHI/CENTRAL MISSOURI '04), ASSOCIATE EXECUTIVE DIRECTOR

Participating in an installation ceremony with more than 45 eager Colonists anxious to receive their Chapter Charter, one cannot help but feel a great sense of pride in Theta Chi Fraternity. This spring, three of our Colonies became Active Chapters, leaving no doubt there exists many young men willing to continue the tradition started by our Founders more than 153 years ago. Our Gamma Delta Chapter at Florida Southern College was reinstalled on March 14, our University of Missouri Colony was installed as the Iota Mu Chapter on April 18, and on May 9, our Epsilon Tau Chapter at Stephen F. Austin State University was reinstalled.

Although the ceremony by which a chapter is (re-)installed lasts only an hour, an enormous amount of planning and hard work is necessary for a Colony to achieve Active Chapter status in Theta Chi Fraternity. The credit for accomplishing this goal can be attributed not only to the many hours of hard work by undergraduate members, but also to the many alumni volunteers who advise and support our new groups.

Theta Chi enters the 2009–2010 academic year with seven Colonies and Interest Groups: Bucknell University (Gamma Eta), Clemson University (Eta Alpha), Marshall University, University of Nebraska-Lincoln (Alpha Upsilon), Ohio State University (Alpha Lambda), University of South Florida, and University of Wisconsin-Madison (Psi). The International Fraternity looks forward to each of these new groups taking their place on the roll of Active Chapters in Theta Chi Fraternity.

Theta Chi continues to seek opportunities for expansion on campuses across North America. If you would like to learn more about

Theta Chi's expansion program, or how you can assist with the (re-)establishment of a chapter, please feel free to contact me at the International Headquarters by phone at 317-824-1881 or by email at mmayer@thetachi.org.

Thanks to our alumni for donating their time and talents to help our new chapters!

Iota Mu

Mel George (Delta Iota/Northwestern '56)
Tony Tetley (Epsilon Phi/Central Missouri '67)
Tom Larm (Iota Beta/Missouri State '07)
Warren Mayer (Zeta Beta/Adrian '83)
Jon Critser (Delta Omega/Ripon '75)
Horace B. "Tommy" Tomlin (Beta Rho/Illinois Wesleyan '49)

Epsilon Tau

George Reese (Epsilon Tau/Stephen F. Austin '76)
Jeremy Higgins (Theta Eta/Sam Houston State '96)
John Ward (Epsilon Tau/Stephen F. Austin '74)
Gary Holverson (Epsilon Tau/Stephen F. Austin '91)
James Crow (Epsilon Tau/Stephen F. Austin '90)

Gamma Delta

John Haldeman (Epsilon Phi/Central Missouri '66)
George Buie (Gamma Delta/Florida Southern '64)
Richard Fulton (Gamma Delta/Florida Southern '70)
Patrick Oatley (Gamma Delta/Florida Southern '73)
Dan Coconour (Gamma Delta/Florida Southern '65)
Joe Coconour (Gamma Delta/Florida Southern '64)
Waite Willis (Gamma Delta/Florida Southern '70)



REINSTALLATIONS: (TOP) The Installation Committee and new brothers of Gamma Delta/Florida Southern celebrate reinstallation. (BOTTOM) Brothers and alumni from Epsilon Tau/Stephen F. Austin celebrate their chapter's reinstallation. The chapter went from interest group to chapter in eight months.

Progress with our Mission



The Foundation Chapter has been blessed with another good year. Our Mission is to develop and provide financial resources to promote the academic, leadership, and service ideals of Theta Chi Fraternity. We take this opportunity each year to report on our activities for the past year. The following pages show the lifetime levels of those brothers and friends who made a donation to the Foundation Chapter in calendar 2008. We thank

you all for your continued support and generosity. You will also see our financial statements show substantial growth in our assets, which is due to the receipt of some substantial estate gifts that have been recognized in past Rattles.

Our two major fundraising initiatives are the Annual Campaign and the Planned Giving Program. For the Annual Campaign, you receive one or more letters asking for a calendar year contribution to support the operations of the Foundation. Many of you continue to be loyal supporters, but we also need to attract new donors. We encourage those of you who give, to ask brothers you are in touch with to follow your lead and make an annual contribution. If you have given in the past, but did not give this past year, we ask you to make a gift this year when you receive your letter. We want to also thank Brother Al Saunders, Gamma Xi '69, for serving as our Annual Campaign Chairman. Brother Saunders has had a very successful career as a coach in the NFL, and we are very grateful for the time and commitment he made to serve as our Campaign Chairman.

In 2008, we launched our Planned Giving Campaign with a two-year initiative to develop 100 planned/estate gifts by December 2010 to benefit our scholarship and educational grant programs. We have already received notification from more than 20 brothers that they have included the Foundation Chapter as a beneficiary in their will. Please consider including Theta Chi in your estate plans. We have established the 1856 Legacy Society as a way of recognizing these gifts, so please send us a letter with the information on your gift so we can recognize you as a member. We have also received distributions from several estate gifts, which have provided significant scholarship funds that have benefited many of our members with individual scholarships.

The Blue Trust completed its settlement in 2008, which resulted in a net asset benefit to the Foundation of \$5.3 million dollars. During 2008, the income from these assets was \$110,000 and provided 52 scholarships, which were awarded to men from 28 chapters for undergraduate and graduate studies. In 2009, we have more than \$160,000 to distribute for these scholarships.

We also received the final distribution of the Simon Trust, which now totals \$800,000 in assets to be used for engineering scholarships. We will begin granting scholarships from this fund in 2010.

We continue to provide scholarships for the three Colley Award finalists (our award for the outstanding undergraduate in Theta Chi Fraternity). This past year, the amount of each scholarship was \$1,500. As this fund grows, we will continue to increase the amount of these scholarships to our goal award of \$5,000 each.

The Slivinske Fund income is used to pay the registration fees of Theta Chi brothers attending the Leadership Schools sponsored by the National

Fraternity. In 2008, we were able to use \$20,000 from this fund to send 67 brothers from 66 chapters to the School of Fraternity Practices in Indianapolis, Indiana.

Another scholarship we provide is for attendance at interfraternal leadership schools. Each year we send 4 to 6 men to the Undergraduate Inter Fraternity Institute, which is a leadership school, with scholarships from the Rhodes Fund. The recipients of these scholarships are outstanding Theta Chi undergraduates chosen at large from all our chapters.

We also manage individual chapter scholarship funds totaling \$625,000 for 27 Chapters. These funds had more than \$35,000 available for scholarships in 2008.

Finally, we provide an annual grant to the Fraternity from our Leadership Fund to support the Leadership Schools they sponsor throughout the year. In 2008, we made a \$55,000 grant for this purpose. As we look to the future, our greatest need is to provide support to the Fraternity's Leadership Schools. Therefore, this will continue to be the focus of our Planned Giving Program.

Early in 2009, we received final confirmation from the IRS of our Public Foundation status. This is significant because it qualifies the Foundation for matching gifts from corporations and supporting foundations. If your employer offers a matching gifts program, please contact the Foundation Office to assist you in taking full advantage of this opportunity.

Another major development this year has been the transfer of responsibility for publishing *The Rattle* from the Foundation Chapter back to the Grand Chapter. Content restrictions and distribution limitations were the impetus for this change. We understand they will be taking more advantage of the opportunity to publish an electronic *Rattle* that will be more interactive and have a greater amount of content. With the increasing cost of hard copy publishing and postage, we fully support this change and look forward to the excellent job that will be done going forward.

The Foundation Chapter will also be taking more advantage of electronic technology in its communications and fundraising initiatives. Our first email appeal was distributed this summer. We will continue increasing the information content on our web page and plan on using email notifications to keep you up to date on our activities throughout the year. Our greatest challenge in using this type of communication is to have updated email addresses for you, so please keep us updated as your email address changes.

Finally, we want to thank you again for all your generosity this past year. We know firsthand the challenges our current economy brings you every day and we are very appreciative that you continue to share your treasures to support the Mission of the Foundation Chapter. Together, we are making a difference.

Warren Hoffman

Warren Hoffman (Alpha Iota/Indiana '76)

Editor's Note: In July 2009, Brother Hoffman completed his term as Foundation President, and has stepped down from the Board. We are grateful for his dedication to the Foundation and our Fraternity.

ALPHA

Norwich University
CHASE COUNCIL
 Lt. Col. Nicholas H. Collins
 Andrew T. Boggs, III

CENTURY CLUB
 Thomas W. Donaldson
 Herbert J. Washer
 Christian P. DeCarlo
 Charles H. Perenick
 Richard L. Keenan

MEN SINCE '56
 Edward G. Generous
 John A. Sparkes
 Joseph F. Tine
 Dr. David G. Doane
 Brig. Gen. Paul F. Kavanaugh,
 USA RET
 E. Russell Peach, Jr.

SNAKE AND SWORD
 John F. Hammell
 John W. Dreyer
 Francis E. McIntire

FOUNDERS CLUB
 Edward M. Godfrey
 Raymond A. Hendrickson

BETA
**Massachusetts Institute
 of Technology**

CENTURY CLUB
 Gregory J. Wilson
 Jason T. Timpe
 Edward A. Ort

MEN SINCE '56
 Richard A. Jacobs
 Alan R. Ringen
 Wesley W. Allen
 Francisco J. San Miguel

SNAKE AND SWORD
 John L. Preston, Jr.
 Leonard F. Glaeser
 Keith F. Ashelin
 Scot A. Cook

FOUNDERS CLUB
 Edward W. Heinle, III

GAMMA
University of Maine

FREEMAN FELLOW
 Kenneth F. Beckley, Jr.
 Richard S. Doyon

CHASE COUNCIL
 James C. Otis
 L. Steven Walton

CENTURY CLUB
 Gurdon S. Buck

MEN SINCE '56
 Lt. Col. Lloyd C. Erskine, Jr.
 Howard P. Lowell
 Roger E. Murray
 Elmer W. Parsons

SNAKE AND SWORD
 Steven Sargent
 Richard G. Davis
 Albert R. Barmby
 Richard E. Chute
 Paul A. Townsend
 David O. Werdin
 E. Lyle Flynn
 Ronald M. Rudio
 Paul T. Leonard



Foundation Chapter Salutes its 2008 Top Donors

The Foundation Chapter is grateful to all those who have contributed to our mission of promoting the academic, leadership and service ideals of Theta Chi Fraternity. We are very proud of the men who continue to give back to their Fraternity regardless of their personal circumstances, ages, or chapter affiliations. We would especially like to acknowledge Theta Chi's most generous members, without whose gifts our scholarships would not have been possible.

Congratulations and many thanks to Willis R. Conner (Alpha Delta/Purdue '76), William H. Thomas (Alpha Phi/Alabama '63), Stephen J. Macri (Alpha Omega/Lafayette '82), and Murray B. Wachtel (Zeta Sigma/Wisconsin-River Falls '72), the newest members of the Chairman's Council. We would also like to thank James W. Baker (Beta Alpha/UCLA '87), Leonard J. Becker, Jr. (Delta Mu/Texas '59), Alan K. Saunders (Gamma Xi/San Jose State '69), and Coleman R. LaMaster (Alpha Iota/Indiana '51) who achieved membership in the Freeman Fellows Giving Club this past year.

Members in the Foundation Chapter's Giving Clubs is based on cumulative lifetime giving.
(A key to giving levels can be found on page 16.)

FOUNDERS CLUB
 Dr. Mark C. Torres
 Frank W. Amadon, III

HERITAGE CLUB
 Jayson H. Bearce

DELTA
**Rensselaer Polytechnic
 Institute**

CENTURY CLUB
 John R. Wetmiller

MEN SINCE '56
 Christopher Riddleberger
 Allan P. Walch
 Alan S. Correll
 Douglas W. Ronaldson
 James W. Hamilton
 Robert J. Lytle
 Paul A. Farrar, Jr.
 Frank B. Lang
 John J. Koziol

SNAKE AND SWORD
 John T. Lonati
 Frank J. Potter
 Robert E. Ross

FOUNDERS CLUB
 William G. Germanakos

HERITAGE CLUB
 Gerald E. Duffy
 Heath C. Kent

EPSILON
**Worcester Polytechnic
 Institute**

FREEMAN FELLOW
 James E. Popp

CENTURY CLUB
 Peter J. Mulvihill
 Joseph A. Gugliemino
 John S. Snow
 Lee P. Hackett
 Gerald R. Backlund

MEN SINCE '56
 Norman J. Taupeka
 David B. Hallock
 John J. Marzewski
 James M. Tolos

SNAKE AND SWORD
 Robert A. Meyer
 Todd C. Vigorito
 Dr. Allen H. Levesque
 Robert A.F. Seneres

FOUNDERS CLUB
 Anthony V. Forester
 John V. Marino

ZETA
**University of
 New Hampshire**

CENTURY CLUB
 Scott W. Lowe

MEN SINCE '56
 Frank W. Brown
 Bradley J. Thompson
 Col. Bruce G. MacLennan
 Dan F. Sweet

SNAKE AND SWORD
 Scott A. Hopkins
FOUNDERS CLUB
 John R. Dulude

ETA
University of Rhode Island

CENTURY CLUB
 Edward P. Foster

MEN SINCE '56
 John Richtarik
 Thomas A. Pizza

SNAKE AND SWORD
 Dr. John J. Piacitelli
 Stuart R. Dexter

FOUNDERS CLUB
 David R. Gates

THETA
University of Massachusetts

CENTURY CLUB
 Richard I.L. Partridge

MEN SINCE '56
 Thomas C. Moschos
 John W. Driscoll
 Dr. Howard D. Stowe
 Donald H. Baptiste, Jr.

SNAKE AND SWORD
 Robert F. Ferrara
 Crosby Olinto
 H. Neil Harris

FOUNDERS CLUB
 Albert S. Marulli
 Michael C. Moschos

IOTA
Colgate University

CHASE COUNCIL
 John Z. Hecker

MEN SINCE '56
 George H. Arakelian, II
 Carl W. Christy

SNAKE AND SWORD
 John C. Seedorff
 Dr. Jay W. Martin, Jr.

Thomas L. Glenn, III
 Paul T. Chan

KAPPA
University of Pennsylvania

CENTURY CLUB
 Col. John C. Diller, Jr.
 Donald R. McIvain
 Clarence L. Wagner

SNAKE AND SWORD
 Rev. William S. O'Brien
 Stanley J. Marcewicz
 William J. Beatty

LAMBDA
Cornell University

MEN SINCE '56
 Elbert Hargesheimer, III
 Cal Organ
 Zacharias A. Kollias

FOUNDERS CLUB
 Dale S. Coats
 Peter H. Mitchell

MU
**University of California-
 Berkeley**

FREEMAN FELLOW
 William T. Horton

CHASE COUNCIL
 Col. John F. Bouldry

CENTURY CLUB
 Richard C. Otter
 Robert D. Britz
 William C. Brooks
 Dale R. Dryer

MEN SINCE '56
 Ralph E. Congdon
 Ray L. Horton
 Walter W. Winfield
 Gregory S. Finley
 Robert R. Angwin
 James G. Snider
 Charles R. Bell
 Todd M. Schutte

SNAKE AND SWORD
 G. Peter Lamb, III
 John C. Bennett
 David L. Wiley
 Armand Minasian
 Camden R. Hubbard

NU
Hampden-Sydney College

MEN SINCE '56
 D. Sean Kelly

SNAKE AND SWORD
 Ray Marocco

FOUNDERS CLUB
 John D. Hooker, Jr.
 Edward T. Trapani

HERITAGE CLUB
 Nathaniel W. Phillips

XI
University of Virginia

CHASE COUNCIL
 Dr. Steven J. Agosti
 Dr. Charles T. Faulkner

CENTURY CLUB
 James W. Turner
 Dr. Richard E. Topping, Jr.

1856 Legacy Society

We are excited to announce that at the Foundation Chapter's Board of Directors' Meeting held in 2008 during the 152nd Anniversary Convention in Indianapolis, Indiana; we approved the creation of the "1856 Legacy Society" to honor those brothers and other friends of Theta Chi Fraternity who make a Planned Gift to the Fraternity. The Foundation Chapter has been the beneficiary of a small number of estate gifts over the past 50 years, but they have made a dramatic difference in our ability to provide the support to our brothers of Theta Chi Fraternity. It is for this reason that we have decided to launch this initiative and increase the awareness among our alumni that they can have a very important role in supporting Theta Chi with a Planned Gift. Between now and December 2010, our goal is to encourage 100 brothers to establish a legacy commitment of their own by including the Foundation Chapter in their estate plans. To date, our members are:

Elmer Ahlwardt (*Gamma Rho/Florida State '73*)
Howard R. Alter, Jr. (*Omega/Penn State '41*)
J. Ronald Atchley (*Eta Rho/Centenary '75*)
John M. Barker (*Alpha Upsilon/Nebraska '31*)
Carlton R. Bennett (*Zeta Pi/Old Dominion '72*)
Sherwood Blue (*Alpha Iota/Indiana '26*)
George W. Chapman (*Omega/Penn State '49*)
Kenneth J. Cruger (*Gamma Rho/Florida State '54*)
Thomas V. Freeble (*Alpha Beta/Pittsburgh '25*)
John D.B. Fridholm (*Eta Delta/Babson '84*)
Michael G. Friedel (*Zeta Nu/Parsons '71*)
Walter Gutjahr (*Gamma Theta/San Diego State '56*)
William A. Haggstrom (*Alpha Pi/Minnesota '58*)
William C. Hart (*Mu/California '44*)
Warren E. Hoffman (*Alpha Iota/Indiana '76*)
Danny P. Kaiser (*Alpha Mu/Iowa State '76*)
Willis P. Lanier (*Alpha Nu/Georgia Tech '27*)
William G. McAllister (*Alpha/Norwich '31*)
Herb Morgan (*Theta Iota/UC-Santa Cruz '88*)
Patrick T. O'Connor (*Chi/Auburn '78*)
James C. Otis (*Gamma/Maine '69*)
Ron Pearce (*Rho/Illinois '56*)
Carl D. Peterson (*Alpha Pi/Minnesota '84*)
Wilson B. Powell (*Alpha Omega/Lafayette '33*)
Shawn T. Prohaska (*Delta Omicron/Gettysburg '89*)
Earl D. Rhodes (*Delta/RPI '21*)
Edwin M. Salkeld, Jr. (*Beta Nu/Case Western '57*)
Frank Schrenk, Jr. (*Beta Sigma/Lehigh '51*)
Victor Simon (*Beta Lambda/Akron '35*)
Dale A. Slivinske (*Gamma Sigma/Drake '68*)
Jennings F. "Jay" Stright (*Epsilon Eta/IUP '66*)
William Suter (*Beta Delta/Rutgers '43*)
William H. Thomas (*Alpha Phi/Alabama '63*)
Jimmy M. Wall (*Alpha Phi/Alabama '51*)

MEN SINCE '56
Ronald W. Broome
T. Howard Noel
Gerald H. Barnes, CFA
Paul B. Vetter, II
James R. Hart
Robert C. Zschoche, Jr.
Dr. Jeffrey R. Jaeger

SNAKE AND SWORD
Dr. C. Thomas Kelso
Charles A. White, III
John A. Caldwell

FOUNDERS
Richard M. Cross
Franklin D. Wharam, Jr.

OMICRON
University of Richmond
CENTURY CLUB
George M. Thomas, Jr.

MEN SINCE '56
John E. Zydron, Sr.
Charles F. Benjamin
Thomas L. Fendley

SNAKE AND SWORD
John G. Cosby, Jr.
Benjamin C. Garrett, III
Raymond K. Butler, Jr.

PI
Dickinson College
CENTURY CLUB
Thomas L. Kalaris
The Hon. Morris M. Terrizzi

MEN SINCE '56
James E. Goens
Rev. H. Paul Leap
Robert A. Mairone

SNAKE AND SWORD
Lt. Col. William R. Waterman
Mark M. Anderson
Dr. Kent M. McLean
James H. Buzby
Wayne J. Davis
Rev. William W. Sherman, Jr.

FOUNDERS CLUB
Anthony F. Kern

RHO
University of Illinois
BOARD OF VISITORS
Ronald D. Pearce

CHASE COUNCIL
Vernon F. Vineyard
James L. Munson
Albert H. Wohlers

CENTURY CLUB
William D. North
William K. Quinlan, CPA
William A. Frey, III
Everett P. Weaver
William E. Thonn
George E. Smith, Jr.
Dale E. Eckerty
Richard M. Franks

MEN SINCE '56
Henry F. Pierce, Jr.
W. Jerome Byrnes, Jr.
Thomas N. Thompson
Brian A. Rinker
Dr. Bruce E. Kirk
C. Drew Kofahl
Jason V. Bauer
George W. Ritter

SNAKE AND SWORD
John W. Weborg
John R. Koucky

FOUNDERS CLUB
Kevin J. Snyder
Christopher L. Hage

HERITAGE CLUB
Peter F. Klempere

SIGMA
Oregon State University

FREEMAN FELLOW
Robert K. Russell, Jr.

CHASE COUNCIL
Ellsworth D. Purdy
John C. O'Brien

CENTURY CLUB
Fred E. Harem
Curtis C. Tigar
Hollis D. Brown

MEN SINCE '56
Dr. Robert E. Woodley
George E. Carlon
Charles D. Mosher
Col. Reginald D. Fifer, Jr.
Roger L. Rollins

SNAKE AND SWORD
Richard Y. O'Shea
Dr. James G. Bradsher
David F. Harra
Dr. Allan O. Diefendorf

TAU
University of Florida
CHAIRMAN'S COUNCIL
J. Bruce Hoffmann
CHASE COUNCIL
Capt. Robert M. Kreimer
Edmund G. Tubel
Timothy J. Joslin, CPA

CENTURY CLUB
Rodney A. Hammond
Henry C. Skinner
B. Lawson Spare
Lamont K. Roberts
Joseph C. Moretta
Ross E. Mowry
Christopher L. Thompson

MEN SINCE '56
Lester E. Segal
Joseph E. Gazdak
John S. Sherman, Jr.
Thomas N. Richardson
Vincent N. Mandese
Dr. William E. Pinney
Lt. Col. Rex L. Holloway
Denny B. Dennison, CPA
J. Gary Hoopes
Ronald G. Acree
Michael P. Reed

SNAKE AND SWORD
Anthony S. Cooley
Adam C. Davis
Carl C. Jansen, Jr.
Nathaniel L. Storms
Harold P. Reddick
Michael S. Lamont
William J. Bozic, Jr.

FOUNDERS CLUB
Clyde J. Pittman
Cmdr. Charles G. Sauls
James R. Eriksen
Kevin F. Reilly, Jr.

UPSILON
New York University

CHASE COUNCIL
Dr. Robert P. Renner

CENTURY CLUB
Daniel R. Luthringshauser
Edward W. Keil
Thomas F. Sarcona
Thomas G. Angelo

MEN SINCE '56
Salvatore Masotto
Gerald E. Lundgren

SNAKE AND SWORD
James McQueen
Vincent L. Cappadocia
Joseph G. Golia
Harold E. Kline

PHI
North Dakota State University

CENTURY CLUB
Donald J. Halverson
James J. Wilhelm
Daniel C. Murphy
James D. Hardwick
Douglas B. Johnson

MEN SINCE '56
Lt. Col. Darrell I. Tuntland
John B. Simonieg
Charles R. Keefe
Donald J. Fretland
Col. Helmuth O. Froeschle
Kim M. Gutenkunst

SNAKE AND SWORD
Scott A. Ludwig
Kim M. Colwell
Jerry D. Berg
Robert W. Hausmann
Ronald J. Kochevar
Kerry J. Murphy

FOUNDERS CLUB
David C. Miller
Kiel R. Ova
Warren J. Opperman

HERITAGE CLUB
John W. Sherven

CHI
Auburn University
CHAIRMAN'S COUNCIL
Patrick T. O'Connor

CENTURY CLUB
George P. Walthall
Felix C. Brendle
David O. Parrish
James F. Turner, Jr.
Charles E. Davis

MEN SINCE '56
L. Noel Moore
James W. LeClair
Joseph G. Sprague
Daniel E. Weisenberger
Charles D. Meyer

SNAKE AND SWORD
Col. Edward S. Bolen, RET
Phillip A. McPhail
D. Wayne Garlock
Charles T. Higgins
Charles L. Battle
Benjamin L. Counter
Dennis W. Abercrombie

FOUNDERS CLUB
Woodrow C. Crochet, III
John E. Miller

PSI
University of Wisconsin-Madison

CHASE COUNCIL
David L. Bunzel

CENTURY CLUB
Thomas R. Oberhofer
Robert S. Klang
Steven P. Dhuey
Jon C. Graan

MEN SINCE '56
Dr. G. Kenneth Lewis, Jr.
J. Edward Munnik
John L. Burley

SNAKE AND SWORD
Randall L. Ray, CPM
Stanley S. Smith
James F. Kerler

OMEGA
Pennsylvania State University

CHASE COUNCIL
James C. Stalder
Capt. O. Keith Evans

CENTURY CLUB
Philip C. Chapman
Christopher G. Allocco, Esq.
Timothy P. Dutcher
Robert F. Waltenbaugh

MEN SINCE '56
Robert B. Tucker
William A. Grun
Robert J. Sorisio
Harry L. Bink
James V. Forsythe

SNAKE AND SWORD
Robert J. Scavello, Jr.
W. Winston Orben
John N. Weiss, Jr.

FOUNDERS CLUB
Robert A. Hoffman
Lt. Col. Keith F. Vansant
Stephen J. Martin
Dr. William L. Lear

HERITAGE CLUB
Michael R. Hetrick

ALPHA BETA
University of Pittsburgh

CENTURY CLUB
Frank L. Thomas
Dr. Jod L. Stabley
Joseph A. Campbell, Jr.
Ross P. Obley
Robert F. McCabe, Jr.

MEN SINCE '56
Samuel D. Levy
Michael J. Duffly
Vladimir Vukmir
George N. Vurdelja
Dr. T. John Kuehn, III

SNAKE AND SWORD
Valer V. Secarea, Jr.
Robert W. Page

FOUNDERS CLUB
John W. Zelahy
Barry M. Josowitz
Dale E. Harris

ALPHA GAMMA*University of Michigan***CHASE COUNCIL**

Clark De Jonge

CENTURY CLUBRobert C. Boyer
Keith A. Carabell
William R. Rude
Dr. James E. Dickson, II**MEN SINCE '56**James A. Somers
Dan C. Schoonmaker
Walter C. Cowles
Stephan J. Speth
Dr. Peter W. Damken
George F. Ceithaml
Jack A. Cross
Brian R. Kotzian
Robert J. Lisiecki
Ronald J. Gentile
Ryan N. Waddington**SNAKE AND SWORD**Kenneth F. Foote
Maj. Thomas G. Bobowski,
USMCR**FOUNDERS CLUB**

Bill Grover

ALPHA DELTA*Purdue University***CHAIRMAN'S COUNCIL**Ronald A. Nestor
Willis R. Conner**FREEMAN FELLOW**

Fr. Philip T. Bowers

CHASE COUNCIL

James J. Abel

CENTURY CLUBRobertson H. Short, Jr.
Kenton N. Riggs
Richard R. Malzahn
Robert A. Clark
Steven J. Hanna
Walter P. Linne
Douglas E. Prescott**MEN SINCE '56**J. Dennis Reid
Charles T. Ostick
Leonard P. Kaiser
Capt. Richard J. Lies
John T. Pence
Thomas M. Hoy
John V. Blagrave
Paul D. Znika
Jeffrey J. Kucer
Steven P. Osborn
Mark J. Thomas
Brian C. Peters**SNAKE AND SWORD**Thomas Storey, Jr.
Daniel F. Finn
Jack R. Fenwick
William P. Przybylski
Jeffrey G. Bennett
Michael J. Magin**FOUNDERS CLUB**Coleman L. Bennett
Edward J. Morgan
David L. Kelly
Daniel J. Layman**HERITAGE CLUB**

Craig O. Wellnitz

Statement of Financial Position

June 30, 2008 (Pro-Forma)

Foundation Chapter of Theta Chi Fraternity, Inc.

Assets

Cash and cash equivalents	\$407,366
Prepaid expenses and other assets	4,394
Inventory	1,478
Investments – Market	2,346,998
Beneficial interest trust	5,591,817
Charitable remainder trusts	14,202
Funds held for others	102,572
Total assets	8,468,827

Liabilities and Net Assets

Accounts payable	1,722
Accrued expenses and other liabilities	1,526
Scholarships payable	119,000
Payable to Theta Chi Fraternity, Inc	1,070
Liability under charitable remainder trusts	4,922
Funds held for others	102,572
Total liabilities	230,812

Net Assets

Unrestricted	187,583
Board Designated Allocation	747,265
Temporarily restricted	65,257
Permanently restricted	7,237,910
Total net assets	8,238,015
Total liabilities and net assets	\$8,468,827

The above financial information was compiled from financial statements which are available upon request for a nominal fee, to cover copying and shipping costs.

Combined Statement of Activities and Changes in Net Assets

Year Ended June 30, 2008 (Pro-Forma)

Foundation Chapter of Theta Chi Fraternity, Inc.

Revenues and support:

Contributions	\$3,359,726
Interest and dividends	77,079
Realized gain on sale of investments	41,907
Royalties	23,330
Investment income—perpetual trust	153,730
Change in value of perpetual trusts	(354,737)
Change in value of charitable trusts	(2,107)
Other	177
Net assets released from restrictions	0

Total revenues and support 3,299,105**Expenses**

Publications 47,356	
Scholarships and grants	203,654
Alumni programming	247
Management and general	148,235
Fundraising	42,747
Other	0

Total expenses 442,239

Change in net assets before unrealized gain (loss) on appreciation of investments	2,856,866
Unrealized gain (loss) on appreciation of Investments	(162,651)
Changes in net assets	2,694,215

Net assets at beginning of year 5,543,800**Net assets, end of year \$8,238,015****ALPHA EPSILON***Stanford University***CENTURY CLUB**Gordon L. Pendegraft
Frank W. Hodgdon, III**MEN SINCE '56**

Loren R. Sorensen

SNAKE AND SWORD

Donald M. Murchison

FOUNDERS CLUBRoy W. Fowler, Jr.
Louis L. Potomac, Jr.
Nicholas Gilman**ALPHA ZETA***University of Rochester***CHASE COUNCIL**

Duncan M. Cruickshanks

CENTURY CLUBDr. Kenneth A. Hubel
C. Diehl Ott
George M. Rentoumis**MEN SINCE '56**Donald A. Parry
Dr. William C. Luft
Clarence E. Avery**SNAKE AND SWORD**Richard O. Abbe
Walter H. May**FOUNDERS CLUB**Edward H. Leighten
Richard W. Nottke**ALPHA ETA***University of North Carolina-
Chapel Hill***CENTURY CLUB**Scott E. Cabaniss
G. Leroy Lail, Jr.**MEN SINCE '56**David H. Pace
Gary B. Sappenfield**SNAKE AND SWORD**

John M. White

FOUNDERS CLUB

Don R. Moore

ALPHA THETA*Dartmouth College***CHASE COUNCIL**

Lee E. Bye

ALPHA IOTA*Indiana University***CHAIRMAN'S COUNCIL**

Warren E. Hoffman, II

FREEMAN FELLOW

Coleman A. La Master

CHASE COUNCILBruce M. Pennamp
Larry D. Contos
Dr. Jack Clark Francis
Lt. Col. John E. Zike**CENTURY CLUB**Loren K. Evans
Richard M. Buskirk
Lt. Col. Harold V. Motsinger
Robert S. Stevens, Jr.
Thomas H. Richards, Jr.
Michael O. Thornburg
Jeffrey B. Milbourn
William H. Jackson**MEN SINCE '56**Dr. Eric W. Robbins
David E. Branaman
Dr. Frederick E. Robbins
Thomas S. Cooler
Charles E. Brown

Frederick D. Scheiber

Roger G. Peckham
Derek S. Roudebush
Gregory A. Imboden
Mark A. Sayers
Dr. Charles E. Rinehart
Rev. Myles H. Smith**SNAKE AND SWORD**Dr. Richard R. Schumacher
Brian V. Will
James W. Talbert
Eldon D. Mogle
Lt. Jeremy C. Powell**FOUNDERS CLUB**William E. Mullenholz, II
Jack S. Craven
Richard L. Shirley, Jr.**ALPHA KAPPA***West Virginia University***CENTURY CLUB**James F. Frankenberg
Nicholas J. Kappa**MEN SINCE '56**Robert U. Harris
Jason K. Barnes
Raymond R. Hill**SNAKE AND SWORD**

Robert W. Trenor

Tony J. Marchio

FOUNDERS CLUBBradley S. Bahnak
William J. Shoup
Gary L. McCullough**HERITAGE CLUB**William F. Miller
Timothy J. Webster**ALPHA LAMBDA***Ohio State University***CENTURY CLUB**James C. Scott
Lawrence C. Berger
James R. Kaser**MEN SINCE '56**Richard J. Wilke
Roger E. Mills
Thomas G. Mosher
Col. Roger F. Wickert, RET
Albert M. Bandman
Hugh E. Bonnoront**SNAKE AND SWORD**Paul E. Goebel
Donald F. Stauffer

Roger H. Schauss
Gary D. Slack

FOUNDERS CLUB
Sean P. Osborne
Jerry E. Tilton

ALPHA MU
Iowa State University
CENTURY CLUB
David M. Svigen
John C. Laurie, DVM

MEN SINCE '56
Michael E. Lidman
Roy C. Eisenmann

SNAKE AND SWORD
Mark E. Steward, Jr.
Alan G. Beavers

FOUNDERS CLUB
George M. Sutor
Wade R. Lancaster
Philip A. Amidon
Brian T. Clark
Timothy B. Schwering
Raymond W. Pfitzenmaier

HERITAGE CLUB
Brian F. Banker
Keith R. Zoromski

ALPHA NU
Georgia Institute of Technology

CHASE COUNCIL
Dwight D. Delgado

CENTURY CLUB
Dr. Michael Stewart
Ronald C. Gaughf
Richard E. Rush, Jr.
Richard K. McCrea
Arthur G. Springer, III

MEN SINCE '56
Charles O. Rawlins
George Ossman, III
Robert C. Parrott
David W. McDaniel
John C. Marscher, Jr.
William J. Brook
Robert M. Chastain
Kevin P. Couillard

SNAKE AND SWORD
Steven R. Wrede
Ulysses V. Henderson, Jr.
Col. Roy V. Fair, RET
Vernon A. Hill, Jr.
Jerry J. Ward, Jr.
David V. Aylesworth
Charles C. Isiminger

ALPHA XI
University of Delaware

CENTURY CLUB
James F. Quirk
Col. Robert M. Hall
John R. Feeney
Albert E. Nunn
Kent H. Garson

MEN SINCE '56
Thomas R. Murray
Brian K. Okupski
David W. Finneran
Frank T. Barretta

SNAKE AND SWORD
Robert Brubaker
Gary L. Burcham

FOUNDERS CLUB
Robert P. Jones
Gregg M. Spitzer
Paul L. Hunter, Jr.
John C. Guenveur, Jr.

HERITAGE CLUB
David E. Conner

ALPHA OMICRON
Washington State University
CENTURY CLUB
Dr. Patrick F. Coleman

MEN SINCE '56
Robert J. Sheridan
Fred L. Hunter
Lonn A. Sipes
Kelly W. Hintz

SNAKE AND SWORD
Andrew A. Ellis
Steven R. Ingram

FOUNDERS CLUB
Gary A. Bramer, DDS
Ryan M. Prescott

HERITAGE CLUB
Lucas W. Nurni

ALPHA PI
University of Minnesota
FREEMAN FELLOW
William A. Haggstrom, CFRE

CHASE COUNCIL
John Hallberg Jones
Paul R. Norstrom
CENTURY CLUB
Ronald J. Nida
Carl D. Peterson
Marvin D. Juliar

MEN SINCE '56
Fred R. Friswold
Daniel P. Reilly

SNAKE AND SWORD
Steven K. Mayer
Henry R. Frese
Donald R. Barzan

FOUNDERS CLUB
Anno K. von Heimburg
Jon E. Weng

ALPHA RHO
University of Washington
CHASE COUNCIL
Vernon F. Vikingson
CENTURY CLUB
Donald E. Barnard
Raymond A. Dodge, Jr.
Louis W. Roebke
Charles R. Chadwick, Jr.
Dr. Robert J. Hoxsey

MEN SINCE '56
Roger D. Pinneo, CLU
James E. Mackey
John W. King
Robert A. Loudon
Dr. James H. Rondeau

SNAKE AND SWORD
Scott P. Jones
David L. DiMartino
Walter D. Walker
Arthur R. McCarty
Charles E. Moehring

FOUNDERS CLUB
Leighton C. Rice
Ronald K. Shinogi

**TOP TEN CHAPTERS
BY AMOUNT OF
CONTRIBUTIONS**

- 1 Alpha Delta/Purdue \$27,109
- 2 Zeta Sigma/Wisconsin-River Falls \$14,528
- 3 Zeta Pi/Old Dominion \$7,780
- 4 Beta Delta/Rutgers \$6,610
- 5 Gamma Upsilon/Bradley \$6,061
- 6 Alpha Iota/Indiana \$5,685
- 7 Gamma Xi/San Jose State \$4,728
- 8 Rho/Illinois \$4,305
- 9 Alpha Phi/Alabama \$3,525
- 10 Delta Psi/Kansas \$3,325

**TOP TEN CHAPTERS
BY NUMBER OF
CONTRIBUTIONS**

- 1 Zeta Pi/Old Dominion 81
- 2 Alpha Iota/Indiana 43
- 3 Alpha Delta/Purdue 40
- 4 Gamma Xi/San Jose State 39
- 5 Tau/Florida 35
- 6 Beta Nu/Case Western Reserve 33
- 7 Beta Sigma/Lehigh 33
- 8 Zeta Sigma/Wisconsin-River Falls 33
- 9 Alpha Phi/Alabama 29
- 10 Beta Kappa/Hamline 29

**TOP TEN CHAPTERS
BY PERCENTAGE
OF PARTICIPATION**

- 1 Zeta Pi/Old Dominion 12%
- 2 Gamma Omega/Vanderbilt 7%
- 3 Zeta Sigma/Wisconsin-River Falls 6%
- 4 Alpha/Norwich 5%
- 5 Theta Psi/Wisconsin-Oshkosh 5%
- 6 Beta Nu/Case Western Reserve 5%
- 7 Iota Eta/Univ. of the Pacific 5%
- 8 Beta Sigma/Lehigh 4%
- 9 Kappa/Pennsylvania 4%
- 10 Beta Kappa/Hamline 4%

Greg E. Davis
Christian F. Lundsgaard

ALPHA SIGMA
University of Oregon

MEN SINCE '56
Kenneth H. Patton
Michael J. Ryan, III
Stanley E. Weber

SNAKE AND SWORD
H. Donald Ulrich

FOUNDERS CLUB
John C. Sayers, Jr.

ALPHA TAU
Ohio University

FREEMAN FELLOW
Arthur M. Krasilovsky
J. Jeffrey Smead

CHASE COUNCIL
Thomas E. McNamara

CENTURY CLUB
H. Robert Wismar, Jr.
Robert C. Lewis
George M. Sarkes
L. Dale Van Tine

MEN SINCE '56
Peter J. Hackman
Daniel J. Love
John J. Utts
Julius R. Bozman
Lawrence N. McVay, Jr.
Michael H. Kugel
John E. Dalton
Ervin W. Davies

SNAKE AND SWORD
Ernest R. Miklavic
Ronald G. Curtice
Edward P. Schroeder
Carl N. Shadix
Barry N. Kay

FOUNDERS CLUB
Herbert H. Stickney
Jack G. Ulman

ALPHA UPSILON
University of Nebraska-Lincoln

CHAIRMAN'S COUNCIL
Michael D. Roe

CENTURY CLUB
Eric W. Raasch, CLU
Dr. Donald B. Schewe
Raymond N. Ashmun

MEN SINCE '56
Martin E. Neal

SNAKE AND SWORD
William A. Hunnell
David A. Brown

FOUNDERS CLUB
Bernard A. Gleason
Mark D. Olive
Brian M. Hill
Mark A. Erikson
John L. Lisa

ALPHA PHI
University of Alabama
CHAIRMAN'S COUNCIL
William H. Thomas

CHASE COUNCIL
Dale Taylor
George C. Garikes
Scott R. Beal
Dr. Wesley Keel Wicker
Charles N. Parnell, III

CENTURY CLUB
Peter N. Dertzis, Jr.
Ralph H. Cassell
Jimmy M. Wall
James D. Ward
John R. Jordan
Lawrence H. Kloess, Jr.
Col. John L. Conway, III, RET

A. Sanford Kimberly
George P. Morris, Jr.
Charles W. Rush
David M. Green
C. Benton Burroughs, Jr.
W. Bryan McPherson, Jr.

MEN SINCE '56
Michael J. Mazenko
Robert A. Moore
Thomas K. Keller, Sr.

SNAKE AND SWORD
H. Dixon Forrester, Jr.
Michael A. Pope
Col. Roland E. Ballow
Dennis R. Slepisky
Robert M. Alt

FOUNDERS CLUB
Stephen G. Propst
Jonathan M. Young

ALPHA CHI
Syracuse University

CENTURY CLUB
Donald A. Hubner
Dennis W. Morgan

MEN SINCE '56
Thomas M. Kenyon
James P. Urbanowicz
Gary L. Joseph
Jason H. Seidl
Francis S. Vasques

SNAKE AND SWORD
Larry M. Issak
Dennis M. McManus
Durando Miller, III
Robert J. Dewey
Donald C. Liebson

FOUNDERS CLUB
Peter T. Mahlstedt
Kevan R. Emmott
HERITAGE CLUB
Edward L. Podosek

ALPHA PSI
University of Maryland

FREEMAN FELLOW
David W. Roszel
CHASE COUNCIL
Robert L. Simmons

CENTURY CLUB
R. Scott Knode
David A. Glunt
Anton C. Krucky
Joseph C. Jensen
Daniel H. Fink
Dr. Bernard S. de Hosson
James H. Haley, III

MEN SINCE '56
Robert F. Newton, Jr.
Thomas P. Jackson
William K. Johnson
SNAKE AND SWORD
William T. Sigafoose
Jeff Praissman
John N. DeRosa
Stephen C. Rankin

FOUNDERS CLUB
Ted N. Hallas

ALPHA OMEGA
Lafayette College

CHAIRMAN'S COUNCIL
Stephen J. Macri
CENTURY CLUB
Richard F. Engel
Richard L. Eagles
Edward D. Wetzel
Ralph E. Bothe
James M. Coffey

MEN SINCE '56
John R. Harrington
Robert W. McCluskey
Gary N. Gildersleeve
Calvin K. Flury, Jr.
James T. Holcombe

SNAKE AND SWORD
Warren G. Eberts, Jr.
Stephen R. Brainard
Lt. Col. Frank J. Kohout



Make everyday purchases count.

NO ANNUAL FEE | SECURITY PROTECTION | ONLINE ACCOUNT MANAGEMENT

WorldPoints  Get something back for your everyday purchases. Use your Theta Chi Fraternity Platinum Plus[®] MasterCard[®] credit card with WorldPoints[®] rewards, and you'll earn points you can redeem for cash, travel, merchandise, even unique adventures.* Rewards for the things you buy anyway. You also have the chance to show your support for Theta Chi Fraternity every time you present your card.



To apply, call toll-free **1.866.438.6262**

Mention Priority Code UAAV5M. You can also visit www.newcardonline.com and enter Priority Code UAAV5M.

Bank of America



For information about the rates, fees, other costs and benefits associated with the use of this Rewards Card, or to apply, call the toll free number above, visit the Web site listed above or write to P.O. Box 15020, Wilmington, DE 19850.

* Terms apply to program features and credit card account benefits. For more information about the program, visit bankofamerica.com/worldpoints. Details accompany new account materials.

This credit card program is issued and administered by FIA Card Services, N.A. The WorldPoints program is managed in part by independent third parties, including a travel agency registered to do business in California (Reg. No.2036509-50); Ohio (Reg. No. 87890286); Washington (6011237430) and other states, as required. MasterCard is a registered trademark of MasterCard International Incorporated, and is used by the issuer pursuant to license. WorldPoints, the WorldPoints design and Platinum Plus are registered trademarks of FIA Card Services, N.A. Bank of America and the Bank of America logo are registered trademarks of Bank of America Corporation. All other company product names and logos are the property of others and their use does not imply endorsement of, or an association with, the WorldPoints program. WP.MCV.0908

James H. Miller
William T. Byrnes
FOUNDERS CLUB
James T. Wright
Harvey W. Lambert
David M. Jackson

BETA CHI
Allegheny College
CENTURY CLUB
Frederick J. Cullen
Robert P. Coury, Jr.

MEN SINCE '56
Dale H. Meyers
James D. McCoy
Robert L. Johnson

SNAKE AND SWORD
Bruce W. Cushman
Oliver G. Jakob, III
Joel W. Swanson
James B. Beck
Daniel R. Van Aken

FOUNDERS CLUB
Dr. Daniel T. Altman
Carl B. Clark
David J. Maikowski
Ronald E. Tranquilla
James L. Rhinesmith
David W. Graham
Dr. Thomas A. Foreman
Harry H. Hipwell, Jr.
R. Peter Vande Kappelle, Jr.

HERITAGE CLUB
John M. Williams
Allan T. Norris, Jr.

BETA PSI
Presbyterian College
FREEMAN FELLOW
James S. McEachern, III

CENTURY CLUB
Michael G. LeFever

MEN SINCE '56
Dr. John M. Stephenson
Max W. Walker

SNAKE AND SWORD
James C. Shaw
Robert A. Hough
M. Ronald McMahan, Jr.
Sam W. Colerider, III

BETA OMEGA
Susquehanna University

CHASE COUNCIL
Raymond C. Lauer

CENTURY CLUB
Dr. Gregory J. Reiff
Edward R. Schmidt

MEN SINCE '56
Larry A. Wingard
Kenneth C. Gift

SNAKE AND SWORD
Michael A. Walch
Jack E. Cisney

FOUNDERS CLUB
Jeffery S. Witte
Harry N. Ward

GAMMA ALPHA
*University of Tennessee-
Chattanooga*

MEN SINCE '56
Marvin J. Moseley, Jr.

GAMMA BETA
Furman University
SNAKE AND SWORD
Bob Holmes

GAMMA DELTA
Florida Southern College
CENTURY CLUB
Robert S. Sizemore
Charles B. Stiles, Jr.

MEN SINCE '56
John J. Smith

FOUNDERS CLUB
William M. Gainer
Cecil S. Morrow

GAMMA EPSILON
Western State College

CENTURY CLUB
Larry J. Fitzsimons
David B. Inglis

MEN SINCE '56
William E. Wilcox

SNAKE AND SWORD
David A. Randall

FOUNDERS CLUB
Mark W. Gillette

GAMMA ZETA
Oklahoma State University

CHASE COUNCIL
Paul L. Groover

CENTURY CLUB
Dr. John K. Caruthers
Maj. Bernard R. Gervais

MEN SINCE '56
Charles H. Lupsha

SNAKE AND SWORD
F. Gordon Fransen
Charles F. Townsley

GAMMA ETA
Bucknell University

MEN SINCE '56
William P. Miller

SNAKE AND SWORD
Robert J. DeSousa

GAMMA THETA
San Diego State University

CHAIRMAN'S COUNCIL
David E. DeVol

CENTURY CLUB
Gregory R. Cox
Rick G. Bellows, Jr.

MEN SINCE '56
Richard A. Buck
Michael A. Greenberg

FOUNDERS CLUB
Ronald W. White
James L. Smith

SNAKE AND SWORD
Joseph H. Tausch
John C. Walk
Michael N. Callan

FOUNDERS CLUB
Gustav Gundersen
Phillip C. Thornton
Corydon L. Kale

GAMMA IOTA
University of Connecticut

MEN SINCE '56
William A. Reynolds, Jr.

FOUNDERS CLUB
Robert A. Wallace
Peter W. North

GAMMA KAPPA
Miami University

FREEMAN FELLOW
Dr. Christopher J. Vesey

CENTURY CLUB
Charles F. Sykes
Andrew P. Drake
James W. Pellot
Jerry K. Lambert
John B. Ruddock
Allen C. Waddle, Jr.

MEN SINCE '56
Robert H. Peiffer
Bruce M. Johns
Gary D. Burke
William H. Conner
Robert G. Kundmueller
Douglas W. Gausmann
John F. Tunnacliffe
Jeffery M. Poth
Robert J. Silber
William A. Snook

SNAKE AND SWORD
Gary M. Ilg
Edmund L. Noonan, III
D. Matthew Stremel
Richard S. Heiland
Richard E. Wayman

HERITAGE CLUB
Eugene J. Droder, III

GAMMA LAMBDA
University of Denver

CHAIRMAN'S COUNCIL
James J. Moylan

CENTURY CLUB
Terry M. Carr

MEN SINCE '56
Rene J. Donnard
Paul T. Burns, Jr.

SNAKE AND SWORD
Gary J. Wang
David A. Costantino

FOUNDERS CLUB
John S. Lewis

GAMMA MU
*Bowling Green State
University*

CENTURY CLUB
Lee J. Van Syckle
James D. Crawford

MEN SINCE '56
James A. Brown
Barry E. Siegler
Gilbert G. Koch

SNAKE AND SWORD
Col. Theodore G. Jenkins,
RET
Raymond E. Morris

FOUNDERS CLUB
J. Kevin Telepo
David S. Johnson
James E. Pongstingle
John G. Rich
Robert E. Rutan

GAMMA NU
New Mexico State University

CENTURY CLUB
Jay T. Olson
David J. Nishioka

GAMMA XI
San Jose State University

FREEMAN FELLOW
Richard C. Sanders
Alan K. Saunders

CHASE COUNCIL
Keith C. Lamson
Micah Harrel
Jerry W. Jordan
Peter R. Silva

CENTURY CLUB
Marty G. Schaefer
Roger D. Poe
William R. Shivell
Bruce W. Brown
Gary H. Oseransky

MEN SINCE '56
Dr. Scott W. Milliken
James H. Scott
Richard J. Browne
George R. Anderson
Steven M. Pyle
Brent A. Baer
Harry G. Oliver, II
Michael Forge

SNAKE AND SWORD
Lt. Col. Donald L. Curry
John G. O'Neill
Richard J. Arellano
Donnel V. Borne
Thomas H. Smith
William F. Honey
Donald J. Peterson
John P. White

FOUNDERS CLUB
William C. Fetherston
Sal J. Haro
Manuel J. Lavrador
Nathan W. Kong

GAMMA OMICRON
Wake Forest University

CHASE COUNCIL
Christopher R. Dederer
Bradley N. Schulz
CENTURY CLUB
Kurt F. Rosell

MEN SINCE '56
Donald C. Prentiss
Randolph B. Screen
Dr. James H. Hampton, Jr.

SNAKE AND SWORD
Jeffrey S. Nelson
Adam T. Goodman

FOUNDERS CLUB
Steven C. Holladay
Dr. Jeb S. Rosebrook

GAMMA PI
University at Buffalo

CENTURY CLUB
Elliot S. Rose
Barry A. Ransom
Dr. H. Brian Herdige
John R. Ast
Robert N. Kehe

MEN SINCE '56
Dr. David L. Drake
Jeffrey S. Kenyon

SNAKE AND SWORD
William J. Bagdy
Kenneth P. Schirmuhly
Jerald L. Passer
Daniel L. Schoenborn

FOUNDERS CLUB
Richard R. Kazmar
Kenneth J. Munro, Jr.

GAMMA RHO
Florida State University

CHASE COUNCIL
Elmer L. Ahlwardt, Jr.
Capt. Donald H. Ramsden

CENTURY CLUB
Mark Hillis
Walter R. Abstein
Dale W. Carlson

MEN SINCE '56
Francisco L. Moreno
John B. Murphy
Frank A. Kreidler
George E. Burkhart, Jr.

HERITAGE CLUB
Michael J. Gelsomino

GAMMA SIGMA
Duke University

CENTURY CLUB
Elliott N. Sutta
Marcus W. Page
Clyde H. Harriss, Jr.

MEN SINCE '56
Ven. Can Nathaniel Hynson
Michael A. Korman

SNAKE AND SWORD
Christopher A. Babcock
Thomas M. Yost
Harvey C. Jones, II
Norman L. Cook

FOUNDERS CLUB
Clive Gordon Wilson

GAMMA TAU
Drake University

CHASE COUNCIL
Albert A. Kopec, Jr.
CENTURY CLUB
Michael J. Elston
Nolan C. Mitchell

FOUNDERS CLUB
John B. Shrader
Mark S. Fischer, CPA
John H. Dvorak

MEN SINCE '56
Laurence K. Apple
SNAKE AND SWORD
Jonathan A. Lavoy

FOUNDERS CLUB
Michael S. Hall

GAMMA UPSILON
Bradley University

FREEMAN FELLOW
Dru A. Nelikirk
Randall M. Jacobs
Sean M. DonCarlos

CHASE COUNCIL
Gerald R. Smith
CENTURY CLUB
David D. Tauer

Capt. Roger H. Hill
Peter A. Boehme
Robert C. Carroll

MEN SINCE '56
Hamilton I. Jones
Orville R. Pelletier
W. Richard Blackwell
John A. Bennett
William H. Haynes
Dr. Harry C. Dunn
Terence S. McGraw
Ronald J. McGavran
David R. Peltz

SNAKE AND SWORD
Ronald H. Snyder

FOUNDERS CLUB
Edward P. Erdman
David N. Ross
Roger W. Roszell

GAMMA PHI
*Nebraska Wesleyan
University*

CENTURY CLUB
H. Lawrence Sandall
Hal L. Guyer
Jeffrey A. Smith

MEN SINCE '56
Dr. Fred T. Waring
Russell L. Bywater, Jr.
Dean L. Crewdson
Bradley K. Stock
Dr. Jason L. Besspalec

SNAKE AND SWORD
Randy J. Harrington
D. Paul Vencill
Dr. Corey S. Joekel

HERITAGE CLUB
Trenton B. Maly
Michael J. Paus

GAMMA CHI
Randolph-Macon College

MEN SINCE '56
Eric S. Rice
Dr. F. Edward Bentley

SNAKE AND SWORD
Michael W. Goyne
Joseph E. Hurley
Jeffrey R. Bland

FOUNDERS CLUB
John A. Newman
Dr. Eric S. Bindewald

HERITAGE CLUB
Andrew W. Price
Paulo A. Garcia

GAMMA PSI
University of Puget Sound

CHASE COUNCIL
James W. Franson
CENTURY CLUB
Michael A. Ramoska

MEN SINCE '56
George C. Wirsdorfer
John F. Painter

FOUNDERS CLUB
James F. Leggett
G. Randall Nulle

GAMMA OMEGA

Vanderbilt University

CHASE COUNCIL
Howard D. Orebaugh

MEN SINCE '56
Edward B. Hopper, II
Sovern J. Larkins, Jr.
Robert M. Parrish

SNAKE AND SWORD
Dr. John L. Chapin
Dr. Thomas H. Gray
Joe Brown

DELTA ALPHA
Linfield College

CHASE COUNCIL

Harold R. Gibson

CENTURY CLUB
Dr. Kermit V. Ragain

FOUNDERS CLUB
Timothy A. Brown

HERITAGE CLUB
Andrew P. O'Neal
Jason M. Gore

DELTA BETA
University of Georgia

CHASE COUNCIL

Douglas M. Allen

CENTURY CLUB
Bruce R. Smith

MEN SINCE '56
James W. Curtis, II
William A. Russell
George B. Duke, Jr.
Michael A. Abney

SNAKE AND SWORD
Duglas O. Schwalls
Reginald C. Rahn

DELTA GAMMA
West Virginia Wesleyan College

CENTURY CLUB
James P. Godsey
Charles E. Elkins

SNAKE AND SWORD
C. D. Spiegel
Gregory D. Lessig
Clyde R. Trathowen

FOUNDERS CLUB
David M. Callahan

HERITAGE CLUB
Ramie A. Gatchalian

DELTA EPSILON
University of Miami

CHASE COUNCIL
Richard E. Biancardi

CENTURY CLUB
Thomas M. Smith

DELTA ZETA
University of Nebraska-Omaha

CENTURY CLUB
Michael L. Farquhar
Adam T. Kline

MEN SINCE '56
James M. Harrington
Dr. Thomas D. Wintle

FOUNDERS CLUB
Joshua J. Niemann

Lt. Col. Santo J. Terrano
John T. Walker

DELTA THETA
University of Toledo

CENTURY CLUB
Dr. Thomas J. Haverbusch
Fred G. Schaefer

MEN SINCE '56
Kevin P. Kross
Gene F. Dose
Col. O.F. Dutch Beckhoff
Douglas A. Joseph

SNAKE AND SWORD
Stanley J. Reiter
Lawrence W. Huff
Archie D. Call
William M. Romp

FOUNDERS CLUB
Thomas Kerschler
Raymond J. Ohlman
Jason M. Koralewski
T. Mark Sweeney

DELTA IOTA
Northwestern University

CHASE COUNCIL
Dr. Randy R. Zimmerman

CENTURY CLUB
Norman T. Hilbrecht
Melvin D. George

Bruce A. Petsche
William John Simpson
David W. Tobinson

MEN SINCE '56
Keith R. Knoblock
Dr. G. Todd Bessinger

SNAKE AND SWORD
Ned S. Smith

HERITAGE CLUB
William H. McCulloch, Jr.

DELTA KAPPA
Ball State University

CHASE COUNCIL
Richard L. McCauley

CENTURY CLUB
Dr. Norman D. Ross
David L. Hershey
Robert H. Stine

MEN SINCE '56
William D. Marohn
Jon E. Fischer
Jack M. Stanton

Charles D. Bartlett, Jr.
Bradrick S. Burk
Douglas W. Eichorst
Thomas L. Axon
Donald L. Owens

SNAKE AND SWORD
Dale F. Hughes
Gene A. Baugh
David E. Land
Milton L. Ross
John F. Stiffler
Larry L. Nifong
Nicholas J. Zafran
Joel C. Davis
David E. Fidler, II

FOUNDERS CLUB
Matthew L. Dafforn
Nicholas A. Cunningham
Roger L. Etzler

HERITAGE CLUB
Rocco J. Valadez
Brad A. Schum
Leland L. Etzler

DELTA MU
University of Texas

FREEMAN FELLOW
Leonard J. Becker, Jr.

FOUNDERS CLUB
Auston C. Holt

DELTA NU
University of Vermont

MEN SINCE '56
Kennard P. Rawson
David L. Greemore

SNAKE AND SWORD
Lee D. Hitchcock

DELTA XI
Valparaiso University

CHASE COUNCIL
C. Michael Reese
James R. Morgan

CENTURY CLUB
George F. Bone
Charles A. Nickless
Christopher J. Skoczylas

MEN SINCE '56
Eugene R. Prieztzel
Eugene Denk
Elliott L. Manke
Howard A. Thrun, Jr.

SNAKE AND SWORD
Glenn B. Hessler
Harvey P. Grotrian
William D. Petsas
Paul F. Wachholz
John R. Marquart

FOUNDERS CLUB
John C. Palyok

DELTA OMICRON
Gettysburg College

CHASE COUNCIL
David E. Cowan

CENTURY CLUB
Mark R. Gage
Alfred J. Darold
Lt. Col. Glenn J. Meigel
Rev. Donald J. Ely

Donald S. Guthrie
MEN SINCE '56
Thomas J. Vignola
Ira L. Geiselman, II
R. Scott Snyder

Jeffrey H. Glisson
SNAKE AND SWORD
Albert P. Woodward
William G. Lockhart

Robert K. Vierick, Jr.
Chauncey O. Johnstone
Thomas E. DeLaVergne
FOUNDERS CLUB
George G. Young, III

HERITAGE CLUB
Andrew Werts

DELTA PI
Indiana State University

CENTURY CLUB
Dr. Andrew Robison

Robert Hasbrouck

SNAKE AND SWORD
Clifford C. Simpson
Jack D. Hendrix
Ricky D. Ward
Stephen A. Hamilton

FOUNDERS CLUB
Matthew C. Cochran
Robert D. Bartels
Thomas J. Brink
Kelly B. Ashton
Timothy W. Rout

HERITAGE CLUB
Jonathan O'Neal
Jeffrey D. Tynan

DELTA RHO
North Carolina State University

CHASE COUNCIL
John R. Erdody

CENTURY CLUB
Donald C. Etheridge
Marvin B. Sutton, Jr.

MEN SINCE '56
E. Larry Sanders, III
D. Gray McRimmon
Jason A. Taylor

SNAKE AND SWORD
Henry J. Taylor
Aaron N. Bailey
Lan M. Nichols

FOUNDERS CLUB
Kimberly C. Johnson
Baron L. Weaver
Sean K. Lloyd
Benjamin W. Ray
Brett G. Gillies

HERITAGE CLUB
Jonathan L. Britt
Casey A. Collins

DELTA SIGMA
Clarkson University

CENTURY CLUB
Richard Schwasnick
James P. Kapscho
Jeffrey D. Sturtz

MEN SINCE '56
David W. Darby

DELTA TAU
Kent State University

FREEMAN FELLOW
Harold E. Howell

CENTURY CLUB
Steve P. Turchik

MEN SINCE '56
Gerald R. Semon
Keith W. Keller
Dr. Keith D. McFarland

Raymond H. Anderson
Richard E. Eroskey
SNAKE AND SWORD
Ronald E. Moore

Bradley L. Heiges
David L. Schiska

FOUNDERS CLUB
Jonathan R. Fodor

DELTA UPSILON
Arizona State University

CHAIRMAN'S COUNCIL
M. Walt Davis

CHASE COUNCIL
Michael P. Maloney

CENTURY CLUB
Dr. Stephen A. Baker
Steve E. Hennis

MEN SINCE '56
Gary C. Quinn
Adam B. Harrington
Frank M. Thomas, IV
Ronald Bernal

SNAKE AND SWORD
George F. Beasley
Dr. Francis J. De Grado

FOUNDERS CLUB
Gregory T. Hill

DELTA PHI
University of North Texas

FREEMAN FELLOW
Howard Dudley

CHASE COUNCIL
Vance K. Maulsby, Jr.

MEN SINCE '56
Clyde W. Price, Jr.
George B. Foster

SNAKE AND SWORD
John D. Fulkerson
John B. Schoolfield
William R. Roland

HERITAGE CLUB
Michael C. Duer, III

DELTA CHI
Lenoir-Rhyne University

CENTURY CLUB
Thomas R. Cloninger

SNAKE AND SWORD
J. Daniel Finger
Robert E. Danbom

FOUNDERS CLUB
Thomas L. Adams

DELTA PSI
University of Kansas

BOARD OF VISITORS
M. Lindsay Olsen

FREEMAN FELLOW
Dana K. Richardson

CHASE COUNCIL
Dr. Timothy W. Olsen

CENTURY CLUB
Christopher H. Kennedy
Dr. Jim Simmons
Dana G. Wreath
L. Travis Hicks
James C. Stankiewicz

MEN SINCE '56
James E. Davis
Richard K. Friesner
Bradley P. Proctor
Ryan P. Gerstner
Eric B. Lee

Christopher H. Rahimian
SNAKE AND SWORD
Andrew J. Knopp

Dr. Mark A. Staudacher

DELTA OMEGA
Ripon College

CENTURY CLUB
David D. Chase

James B. Kohnen

FOUNDERS CLUB
John T. Howe
Justin R. Anderson
Scott A. Horning
HERITAGE CLUB
Daniel C. Oakes

EPSILON ALPHA
High Point University

CHASE COUNCIL
James E. Brucki, Jr.

MEN SINCE '56
Jonathan H. Mann

SNAKE AND SWORD
Ronald A. Moore

HERITAGE CLUB
Geoffrey L. Jarrell

EPSILON BETA
Lycoming College

CENTURY CLUB
John M. Wilson, Jr.

SNAKE AND SWORD
Bruce R. Tucker

FOUNDERS CLUB
Lt. Judge David E. Conklin

HERITAGE CLUB
Peter R. Bruguire

EPSILON GAMMA
Widener University

CENTURY CLUB
Edwin S. Carpenter
Christian P. Chace

MEN SINCE '56
John L. Byer

SNAKE AND SWORD
William J. Mitchell
Col. Michael J. Cockill
Charles K. Miller

HERITAGE CLUB
Samuel W. Lewis, III

EPSILON DELTA
Youngstown State University

FREEMAN FELLOW
Dr. Raymond A. Yozwiak

CENTURY CLUB
Gary D. Swanson

MEN SINCE '56
George R. Stowe

SNAKE AND SWORD
James C. Klepin
Peter E. Dalton

HERITAGE CLUB
Troy D. Magrini

EPSILON ZETA
University of Tampa

CENTURY CLUB
Chris Reilly

MEN SINCE '56
Capt. Bruce A. Sublette
Dr. Jeffrey G. Chaffin
Robert P. Maher

SNAKE AND SWORD
Morris S. Willner
Charles A. Ferguson
Louis Struikman

EPSILON ETA*Indiana University of Pennsylvania***CHASE COUNCIL**
Allen M. Woods**CENTURY CLUB**
Jennings F. Stright, Jr.**MEN SINCE '56**
William L. Burdett
Francis C. Baum
William E. Croft, Jr.
Douglas T. Mesmer**SNAKE AND SWORD**
Patrick S. Kochanowski
Jeffery S. Day
John M. Tekely**FOUNDERS CLUB**
Jan R. Garrett
William T. Davis
Andrew H. Schmitt**EPSILON THETA***Tufts University***CENTURY CLUB**
Paul S. Heneghan**MEN SINCE '56**
Mark S. Louchheim**FOUNDERS CLUB**
James H. Hyson**EPSILON IOTA***East Carolina University***MEN SINCE '56**
Arlen E. Mizell
Deke E. Penicnak**SNAKE AND SWORD**
John Pinner**FOUNDERS CLUB**
William J. Davenport**HERITAGE CLUB**
C. Layton Getsinger**EPSILON KAPPA***University of Idaho***CHASE COUNCIL**
Calvin S. Smith**CENTURY CLUB**
David R. Cox**MEN SINCE '56**
Jon M. Smith
David L. Birch**SNAKE AND SWORD**
William M. Merrigan**HERITAGE CLUB**
J. Erik Anderson**EPSILON LAMBDA***Lewis & Clark College***SNAKE AND SWORD**
Robert E. McEnany**EPSILON MU***Eastern Michigan University***MEN SINCE '56**
Dennis Headapohl
Steven J. Lebowksi
Robert W. Shaffer, Jr.
Dr. George M. Yellich
Kenneth G. Mullens
Col. Leroy E. Conner, Jr.
James E. Campbell**SNAKE AND SWORD**
Jack E. Gillary
William H. Noelke**EPSILON NU***California State University-Los Angeles***CHASE COUNCIL**
Rodger H. Comstock**CENTURY CLUB**
Dr. Robert Benavides, Jr.
Lloyd R. Gladden**MEN SINCE '56**
Lawrence G. Seligman**FOUNDERS CLUB**
Donald E. Kurtz**EPSILON XI***Clarion University of Pennsylvania***SNAKE AND SWORD**
Charles A. Steck
Ray W. Forquer, II**FOUNDERS CLUB**
Robert J. Wenner
James E. Marsh**EPSILON OMICRON***Waynesburg University***MEN SINCE '56**
Phillip E. Pulis, Jr.**SNAKE AND SWORD**
Stephen R. Cole**FOUNDERS CLUB**
Robert J. Wenner
James E. Marsh**EPSILON PI***Northern Illinois University***CENTURY CLUB**
William F. Marutzky
Charles H. Elter
Michael J. Zink**MEN SINCE '56**
Ted Knorning, Jr.
Wayne E. Holous**SNAKE AND SWORD**
Kenneth J. LeWald
Gary M. Krewer**FOUNDERS CLUB**
Benny L. Rosete**EPSILON RHO***Rider University***MEN SINCE '56**
John K. Smith
Stuart J. Bury
Dennis M. York
Bruce N. Spring**FOUNDERS CLUB**
Francis A. Schuessler**EPSILON SIGMA***Wagner College***CENTURY CLUB**
Frederick M. Robinson**SNAKE AND SWORD**
Robert M. Rams**FOUNDERS CLUB**
Heiner H. Wolff**EPSILON TAU***Stephen F. Austin State University***CENTURY CLUB**
David S. Harry**MEN SINCE '56**
Douglas J. Kayem**SNAKE AND SWORD**
Paul W. Wright
Harold F. Christmann, Jr.
Reginald E. Bryan**FOUNDERS CLUB**

Tyle R. Fore

EPSILON UPSILON*Central Michigan University***CHASE COUNCIL**
James C. Chapin**SNAKE AND SWORD**
Arthur W. Seiferlein**FOUNDERS CLUB**
Thomas M. Manney**HERITAGE CLUB**
Mark R. Rebtory**EPSILON PHI***University of Central Missouri***CHASE COUNCIL**
Douglas G. Schemenauer
Douglas S. Rambaud**CENTURY CLUB**
William A. Tetley, Jr.
Steven A. Cumbea**MEN SINCE '56**
Phillip R. Rodewald
Robert D. Richmond**SNAKE AND SWORD**
Keith C. Nelson
Jeffrey L. Johnson
William H. Clay, II
Chester L. Landes**FOUNDERS CLUB**
Michael J. Mayer**HERITAGE CLUB**
Troy A. Schmidli
William E. McCaulley**ZETA ALPHA**
*Slippery Rock University***MEN SINCE '56**
Joseph D. McCarthy
Robert R. Jackson**SNAKE AND SWORD**
Thomas M. Laicha**ZETA BETA**
*Adrian College***CHASE COUNCIL**
Rev. Terrance A. Robinson,
LTC, MC, USA, MD**CENTURY CLUB**
Ronald E. Huff
Stephen P. Wolfe
Patrick J. Kilbane, Jr.
David A. Hansen**MEN SINCE '56**
Eric D. Sullivan
Larry E. Wine
Richard F. Florka, Esq.**SNAKE AND SWORD**
Douglas A. Miller
Michael G. Schmalhurst
Brett A. Peters
Michael G. Rankens**FOUNDERS CLUB**
Gregory R. Dalida
Dr. Glenn A. DeLong
Douglas J. Baur**HERITAGE CLUB**
Troy A. Schmidli
William E. McCaulley**ZETA GAMMA**
*University of Alberta***MEN SINCE '56**
Eric J. Connor, Jr.**ZETA DELTA**
*Saint Cloud State University***CENTURY CLUB**
Brent D. Skaja
John C. Folkestad
Robert B. Mellett**SNAKE AND SWORD**
Wayne D. Kruchten**FOUNDERS CLUB**
Murray R. Prust**ZETA EPSILON**
*California State University-Long Beach***CENTURY CLUB**
James D. Ciampa**SNAKE AND SWORD**
Dean P. Zibas
Thomas A. Palmer
Christopher Graham
Todd C. Stauder
Il Yong Jeon**FOUNDERS CLUB**
Philip M. Highducheck, Jr.**ZETA KAPPA**
*Ohio Northern University***CENTURY CLUB**
William J. Sweet
Ronald E. Roll
Brian P. Elmore**FOUNDERS CLUB**
Philip M. Highducheck, Jr.**ZETA LAMBDA**
*Westminster College***CHASE COUNCIL**
David A. McCormick**CENTURY CLUB**
Paul W. Cunningham**MEN SINCE '56**
Harry C. Neel
Steven E. Daris**SNAKE AND SWORD**
Steven P. Klebacha**ZETA NU**
*Parsons College***FREEMAN FELLOW**
Michael G. Friedel**CENTURY CLUB**
William T. Clark**MEN SINCE '56**
John E. Dickinson**ZETA XI**
*University of California-Davis***CENTURY CLUB**
Dr. Ralph H. Miller
James C. Mower
W. Brent Chaney**MEN SINCE '56**
Richard J. Taylor
James E. Walker
Andrew E. Perea**SNAKE AND SWORD**
Steven A. Ross
Winthrop H. Banning
Michael J. Stothers
Dr. Jon K. Hooper**FOUNDERS CLUB**
Gary R. Gailbreath
Jeffrey V. Held**ZETA OMICRON**
*Shippensburg University***MEN SINCE '56**
Charles C. Yohn**ZETA PI**
*Old Dominion University***BOARD OF VISITORS**
Carlton F. Bennett**CHASE COUNCIL**
William T. Hodsden**CENTURY CLUB**
Kevin R. Mack
Michael G. Milligan
James J. Kendall, III
Richard A. Werber
Thomas D. Capozzi**MEN SINCE '56**
Harold J. Winer
Samuel N. Mayo, III
Robert A. Ladd, III
Donald F. Bennis
James R. Wagner**SNAKE AND SWORD**
Dr. David R. Farmer
W. Brock Osborn
Christopher Curtis
Michael A. Stoneham
Philip A. Stein
Eric N. Bucklew
Donald Wilhelm
Richard A. Paradiso, Jr.
Timothy A. Drinko**FOUNDERS CLUB**
John I. Barber
Steve Gonzalez
Michael A. Dimon
Vernon R. Divers, Jr.
Daniel E. Milligan
Darron W. Cross
John G. Teeuwen
John D. Kendall
Richard B. Moore
Bobby W. Davis
John W. Herzke
Michael J. Barnum
James J. Griffin, III
Timothy W. Britt
David Scott Scolamiero
Everette T. Smith
Jesse R. Griffith
Stephen J. Murphy**HERITAGE CLUB**
Warren L. Friedlein
Dean R. Buringa
Daniel R. Wagoner
David G. Flynn
Sean C. Perry
Michael J. Fowler
William B. Forbes
Brian P. Ackerman
Tyler R. Nekton
G. Scott Reinen
John R. Lee
Michael D. Brunick
Raymond A. Gunter
Anthony C. Salino
David E. Dixon
Thomas L. Huss, Jr.
Nathaniel A. Merian**ZETA RHO**
*University of Kentucky***CENTURY CLUB**
L. Kenneth Fister**MEN SINCE '56**
Jerry E. Crail
Christopher Clarkson**ZETA SIGMA**
*University of Wisconsin-River Falls***CHAIRMAN'S COUNCIL**
Murray B. Wachtel**FREEMAN FELLOW**
David A. May
Jeffrey R. Storey**CHASE COUNCIL**
David J. Chell
Gary W. Maier**CENTURY CLUB**
Royce A. Keehr
Joshua T. Pals
Robert H. Moody, II
Jeremy J. Untz

MEN SINCE '56
 Frederick D. Benson
 Alvin E. Johnson
 Kyle J. Weaver

SNAKE AND SWORD
 John P. McLaughlin
 Keegan R. Olson

FOUNDERS CLUB
 Robert D. Moody
 Jeffrey R. Stien

HERITAGE CLUB
 Aaron S. Taylor

ZETA TAU
University of Michigan-Flint

MEN SINCE '56
 David D. Sprague, Esq.
 Dr. Robert W. Shick, Jr.

SNAKE AND SWORD
 J. Jeff Fisher
 Joshua L. Dugas

HERITAGE CLUB
 Christopher D.T. Gordon

ZETA UPSILON
University of Hartford

SNAKE AND SWORD
 Charles R. Beers, Jr.

ZETA PHI
California Polytechnic State University

MEN SINCE '56
 Jon A. Fasola

ZETA CHI
Bryant University

FOUNDERS CLUB
 Allen A. Calafrancisco

ZETA PSI
Western Illinois University

CENTURY CLUB
 Mickey R. Price

ZETA OMEGA
West Chester University

SNAKE AND SWORD
 Todd R. Richman

ETA ALPHA
Clemson University

CENTURY CLUB
 Tobin E. Proctor

FOUNDERS CLUB
 David A. Greene

ETA BETA
Eastern Kentucky University

CENTURY CLUB
 Thomas E. Seward, Jr.

MEN SINCE '56
 Michael S. Fletcher
 Brian G. Hutzelman

SNAKE AND SWORD
 Craig T. Hafer

FOUNDERS CLUB
 Adam J. Thayer

Michael A. Galasso
 Roderick C. Privett

John A. Kinnett

HERITAGE CLUB
 Matthew B. Bender
 John L. Ison

ETA GAMMA
Morehead State University

SNAKE AND SWORD
 Barry E. Bouley

Michael C. Quinn
 Timothy P. McGill
 Mark J. Fairchild

Floyd A. Skeans
 David K. Miller
 Darrel T. Sadowski

FOUNDERS CLUB
 Kenneth J. Durham
 Jason N. Stamper

ETA DELTA
Babson College

CENTURY CLUB
 John D.B. Fridholm
 C. Rock Roan

MEN SINCE '56
 John A. Zanchi, Jr.
 Owen S. Mael

ETA ZETA
Edinboro University

MEN SINCE '56
 Ronald E. Kibbe

SNAKE AND SWORD
 Kurt D. Schiemer
 David C. Strieder

ETA THETA
Chadron State College

SNAKE AND SWORD
 Gregory B. Hill

ETA IOTA
Newberry College

CENTURY CLUB
 Brad C. Waters

MEN SINCE '56
 P. Ed Havird, Jr.
 R. Donald Alcorn
 Col. Lance S. Young

ETA KAPPA
James Madison University

CENTURY CLUB
 G. Larry Short

SNAKE AND SWORD
 John B. Davis
 Scott W. McGuffin

FOUNDERS CLUB
 Jeffrey B. Hill
 Dennis R. Willis
 Jeffrey M. Koch

ETA LAMBDA
Virginia Polytechnic Institute & State University

FREEMAN FELLOW
 David M. Wilberger, Jr.

CHASE COUNCIL
 Patrick L. Devlin

CENTURY CLUB
 Joel H. Swank
 Robert M. Moore
 Craig S. Naha
 Franklin T. Overbey

MEN SINCE '56
 William C. Major
 Robert W. Riggan
 Edward M. Halley, III

SNAKE AND SWORD
 Cmdr. Robert B. Powers
 Taylor H. Lewis

ETA MU
University of Findlay

CHASE COUNCIL
 C. Douglas Lyon

CENTURY CLUB
 Bruce A. Olson
 Michael T. Stack

MEN SINCE '56
 Mark A. Robinson
 James R. Vargo

FOUNDERS CLUB
 Gary J. Herman
 Benjamin A. Ciesinski
 Rory C. Coleman

ETA NU
Alma College

FOUNDERS CLUB
 William T. Dever

ETA OMICRON
Northwestern State University

MEN SINCE '56
 Dr. David M. Deggs

SNAKE AND SWORD
 Dick P. Marsh
 Robert B. Ramagos
 Craig A. Tappel, CPA
 Lucas W. Dowden

FOUNDERS CLUB
 Ramsen E. Sayad
 Anthony W. Branham, Jr.
 Kristian M. Gaudet

ETA PI
East Stroudsburg University

CHASE COUNCIL
 Joseph R. D'Amore, Jr.

CENTURY CLUB
 Randy S. Maugle

MEN SINCE '56
 William H. Hoffman
 Lewis A. Marrara, II

SNAKE AND SWORD
 Sean M. Fitzgerald
 Adam M. Quinones

FOUNDERS CLUB
 Leonard W. Burkhart

HERITAGE CLUB
 Eugene Milewski
 Michael D. Ratcliffe

ETA RHO
Centenary College of Louisiana

CHASE COUNCIL
 J. Ronald Atchley

CENTURY CLUB
 David A. Lawrence

FOUNDERS CLUB
 Dr. William J. Hayes

ETA SIGMA
Arkansas Tech University

FOUNDERS CLUB
 William A. Spinks



ETA TAU
California State University-Stanislaus

MEN SINCE '56
 Thomas H. Hedtke

ETA PHI
Oakland University

FREEMAN FELLOW
 Edward A. Eickhoff

CHASE COUNCIL
 John F. Horvat

CENTURY CLUB
 Gerald Dittrich
 James G. Kocis
 James H. Pratt
 Frederick E. Zorn, Jr.

SNAKE AND SWORD
 Alejandro Georges

FOUNDERS CLUB
 Jason H. Fisher

ETA CHI
George Mason University

CENTURY CLUB
 Robert F. Boland

MEN SINCE '56
 Tobin R. Foryt

SNAKE AND SWORD
 Steven G. King
 Shayan Farazmand

FOUNDERS CLUB
 Michael J. Abate
 J. Alexander Hrovat

ETA OMEGA
California State University-Chico

MEN SINCE '56
 Edward W. Stone

FOUNDERS CLUB
 Brandon M. Ware

THETA ALPHA
California State University-Northridge

SNAKE AND SWORD
 Timothy D. Scully

THETA BETA
The College of New Jersey

CENTURY CLUB
 William J. Stephenson, IV

MEN SINCE '56
 Matthew P. Green

THETA GAMMA
Northwood University

SNAKE AND SWORD
 Michael G. Cooney

THETA DELTA
Santa Clara University

CENTURY CLUB
 Kenneth M. LaGrande
 Bryan P. Emmert

THETA EPSILON
Kennesaw State University

CENTURY CLUB
 J. Barry Schrenk

THETA ETA
Sam Houston State University

MEN SINCE '56
 Timothy J. English
 Douglas L. White, CPA
 Timothy L. Rader

SNAKE AND SWORD
 Jeremy K. Higgins

THETA IOTA
University of California-Santa Cruz

CHASE COUNCIL
 Herbert W. Morgan, Jr.

CENTURY CLUB
 Tyson Y. Lai

MEN SINCE '56
 Nick Kopsinis
 Eric Fan

THETA KAPPA
Texas Tech University

MEN SINCE '56
 Gregory A. Powell

SNAKE AND SWORD
 D. Trey Coleman

HERITAGE CLUB
 Shane A. Harris

THETA MU
California State University-East Bay

SNAKE AND SWORD
 Frank V. Bisbiglia, Jr.

THETA NU
Rowan University

MEN SINCE '56
 Robert C. Moran, Jr.

THETA XI
Virginia Commonwealth University

CENTURY CLUB
 Jonathan N. Chasen

FOUNDERS CLUB
 Anthony M. Engel
 Patrick M. House

THETA PI
Bridgewater State College

FOUNDERS CLUB
 Richard P. Gibbons, Jr.

THETA TAU
Western Michigan University

SNAKE AND SWORD
 Matthew G. Monroe

FOUNDERS CLUB
 Dominick R. Tomburrini

THETA PHI
California State University-Bakersfield

FOUNDERS CLUB
 Rueben R. Zamudio

THETA PSI
University of Wisconsin-Oshkosh

CENTURY CLUB
 David P. Poteat

MEN SINCE '56
 Joshua J. Palleon
 Chad R. Strelow

SNAKE AND SWORD
 Robb T. Henrickson
 Ted A. Wisniewski
 Mark E. Moss
 Craig J. Strelow

IOTA ALPHA
University of North Carolina-Wilmington

HERITAGE CLUB
 Thomas R. Oberleitner, III

IOTA BETA
Missouri State University

FOUNDERS CLUB
 Matthew J. Frauenhoffer

IOTA EPSILON
Georgia State University

HERITAGE CLUB
 W. Michael Hyde, Jr.

FRIENDS OF THE FOUNDATION CHAPTER
 Grand Chapter of Theta Chi
 Richard S. Simon
 Norwich Housing Corporation
 June Jurick
 Edwin C. DeLong
 Erica D. Johnson
 Pi Alumni Corporation
 Zeta Alpha Alumni Corporation
 Beta Kappa Alumni Corporation

Undergraduate Donors

Beta

Massachusetts Institute of Technology
Ryan M. Andrews
Stephen B. Howland

Delta

Rensselaer Polytechnic Institute
Charlemagne B. Balane
Steven Maruffi
Evan J. O'Brien
David Ramonas, Jr.

Iota

Colgate University
Michael T. Carini
Karl D. Fries
Douglas R. Packard

Xi

University of Virginia
Edwin P. Moore

Sigma

Oregon State University
Jeffery K. Griggs
Dinko Plasto

Tau

University of Florida
Aaron B. Crespin
Kevin F. Reilly, Jr.

Phi

North Dakota State University
Anthony J. Clowe
Dean R. Derfus
Cory C. Loveless
Justin N. Nelson
Mark A. Vanderlinde

Chi

Auburn University
Gregory B. Brown
Andrew A. Luther

Omega

Pennsylvania State University
Daniel Cartwright
Matthew J. Cook
Leshawn M. Haynes
James M. Patterson, Jr.

Alpha Delta

Purdue University
Thomas R. Allen, IV
Nicholas D. Brady
James M. Cox
Prateek Puvvada

Alpha Iota

Indiana University
Douglas L. Donoghue
Andrew P. Howerton
Brendan M. Kelly

Alpha Kappa

West Virginia University
David W. Seitzinger

Alpha Mu

Iowa State University
John C. Hurst
Nathan C. Vermillion

Alpha Xi

University of Delaware
Tyler S. Miller

Alpha Rho

University of Washington
Seth A. Lobree
Evan B. Stoll

Alpha Psi

University of Maryland
Matthew J. Conlon

Beta Delta

Rutgers University
Brian L. Callahan
Patrick J. Callahan

Beta Eta

Washington College
Matthew B. Priestner

Beta Theta

Drexel University
Zachary S. Robbin

Beta Kappa

Hamline University
Isaac J.M. Adams
Kale K. Anderson
Matthew D. Chartrand
Kevin R. Heesen
Mitchell D. Knajdek
Aaron J. Meulemans
Zev A. Nicholson
Dahmon W. Romness
Christopher A. Winebrenner

Beta Lambda

University of Akron
David W. Hughes
Anthony J. LoVullo
Justin S. McLaughlin
Michael J. Quayle
Matthew J. Wadsworth

Beta Nu

Case Western Reserve University
Benjamin M. Lawler
Robert M. Miller
Daniel C. Neumann
Daniel R. Okienko
Andrew J. Schwirian

Beta Rho

Illinois Wesleyan University
Patrick S. Topf

Beta Omega

Susquehanna University
Colin M. Hutchison

Gamma Theta

San Diego State University
Jonathan M. Melvin
James T. Parker

Gamma Lambda

University of Denver
Timothy R. Breckon, Jr.

Gamma Xi

San Jose State University
Kevin House, Jr.
Benjamin V. Little
Alexander Varnava

Gamma Rho

Florida State University
Brazos H. H. Barber
Michael T. Bernstein
James A. Black
Drew P. Chiodo

Timothy A. Crowley

Omar A. Elsaka
Steven J. Wiley

Gamma Tau

Drake University
Alexander D. Bartram

Gamma Phi

Nebraska Wesleyan University
Kale B. Burdick
Jamey C. Kennel

Gamma Chi

Randolph-Macon College
Justin D. Stanek

Delta Alpha

Linfield College
Wyatt C. Lee

Delta Gamma

West Virginia Wesleyan College
Christopher R. Tichnell

Delta Zeta

University of Nebraska-Omaha
Raydell Cordell, III
Thomas C. Guttermann
Danelis J. Mackevicius

Delta Theta

University of Toledo
Gregory A. Gleaves
Michael J. Ingelido
James J. Kratochvil

Delta Xi

Valparaiso University
Ian N. Altieri

Delta Phi

University of North Texas
Robert B. Boccaccio

Delta Chi

Lenoir-Rhyne College
Joshua D. Carter
Joseph A. Cornett
Chad L. Thacker

Delta Psi

University of Kansas
Felix M. Zacharias

Delta Omega

Ripon College
Nicholas D. Baker
Jeffrey D. Davis
Daniel C. Oakes

Epsilon Gamma

Widener University
David J. Beccaria
Robert E. Gallagher

Epsilon Delta

Youngstown State University
Troy D. Magnini
Desmond J. Wallace

Epsilon Iota

East Carolina University
Chase W. Tobin

Epsilon Kappa

University of Idaho
Kevin S. Gwinn
Gregory M. Nakata

Epsilon Sigma

Wagner College
Drew P. Moffitt

Epsilon Phi

University of Central Missouri
Matthew R. Boltz
Patrick J. Hill

Eta Gamma

Morehead State University
Christopher S. Kimmons

Eta Iota

Newberry College
Andrew J. Dance

Eta Mu

University of Findlay
Che W. Brindle
Maximus C. Bryant
Erik M. Cranmer

Eta Omicron

Northwestern State University
Eddie Higginbotham, IV

Eta Pi

East Stroudsburg University
Josh J. Correa

Eta Rho

Centenary College of Louisiana
Jeremy K. Fagan

Eta Tau

California State University-Stanislaus
Justin M. Nevels

Eta Phi

Oakland University
Allen Tim-Heng Gee
Bradley M. Roemmich

Eta Chi

George Mason University
Thomas H. Flounders, Jr.
J. Alexander Hrovat
Francis P. Money

Theta Eta

Sam Houston State University
Ian A. Espada

Theta Kappa

Texas Tech University
Michael E. Martin
Michael D. O'Shea

Theta Nu

Rowan University
Erik J. Olvesen

Theta Rho

McNeese State University
Jared J. Lognion
Thomas J. Moore
Robert L. Williams

Theta Psi

University of Wisconsin-Oshkosh
Kyle P. Spittler

Theta Omega

Appalachian State University
Matthew J. King

Zeta Beta

Adrian College
Ryan S. Cornelius
William A. DeYoung, III
Robert J. Magyar

Zeta Delta

Saint Cloud State University
John A. Parro

Zeta Kappa

Ohio Northern University
Axel T. Brandt
Stephen F. Halas, IV

Zeta Pi

Old Dominion University
James J. Griffin, III
Robert A. K. Gurkin, III
Jake A. Knupp

Zeta Sigma

University of Wisconsin-River Falls
Benjamin V. Blanchard
Joshua O. Brock
Matthew L. Crase
Aaron S. Taylor

Zeta Tau

University of Michigan-Flint
Jeffrey S. Shuel
Cade W. Surface

Zeta Upsilon

University of Hartford
David S. Janson

Iota Beta

Missouri State University
Anthony M. Fiorello
Bradley M. Healey
Cory J. Honer
Travis J. Liles
Curtis H. Roller
Zachary T. Smith
Travis L. White
Jason E. Wilbanks

Iota Delta

Southeastern Louisiana University
Michael J. Gajjour
Matthew J. Kozel
Matthew J. Martin
Preston M. Plese

Iota Epsilon

Georgia State University
Patrick D. Williams

Iota Zeta

Radford University
Kyle G. Vander Bush

Iota Eta

University of the Pacific
Justen B. Beffa
Christopher F. Hewitt
David A. Johnson

Iota Theta

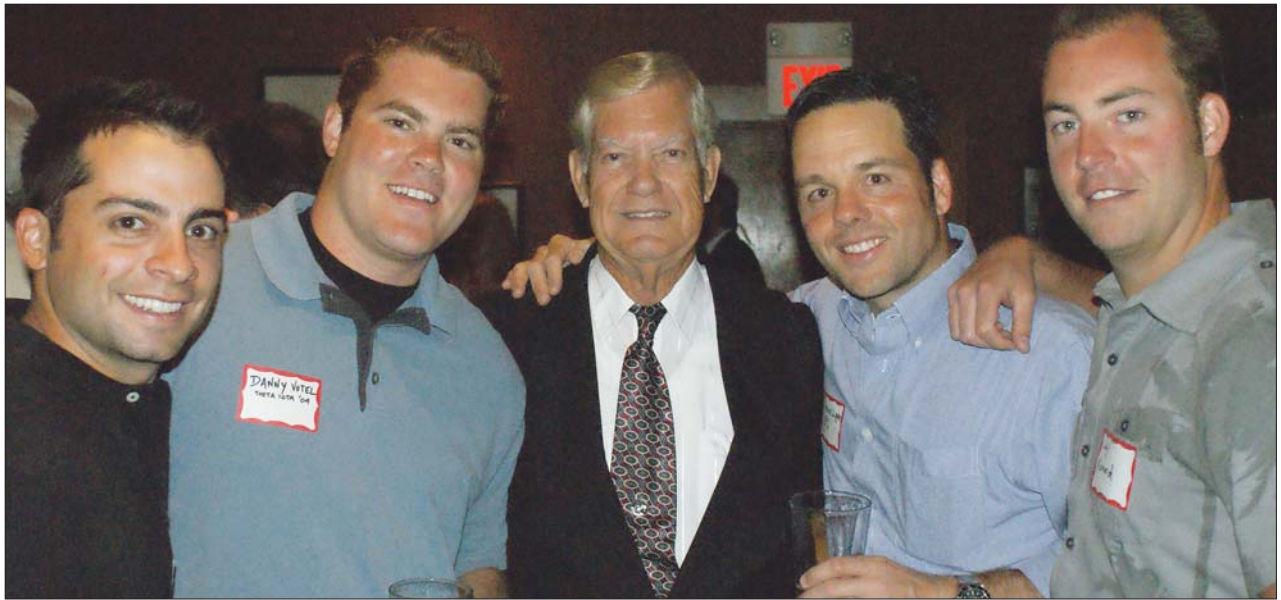
University of Central Florida
Avidahn Levin
Matthew W. Macar
Christopher J. Morata
Vinay A. Shah
Benjamin A. Wallinger

Iota Kappa

Northern Arizona University
Chad R. Cameron

Iota Lambda

Longwood University
Stephen M. Lee



Buddy Davis with brothers at the annual Founders Day celebration in San Diego, California.

Charles “Buddy” Davis- Aerospace Pioneer

The man who pushed the button to send America to the Moon.

BY JIM MCMAHON (ZETA EPSILON/CSU LONG BEACH '79)

The American flag planted on the Sea of Tranquility by Neil Armstrong and Buzz Aldrin on July 21, 1969, represents the high watermark of human space travel. Coming only 65 years after the first human powered flight by the Wright Brothers, the Apollo 11 moon landing endures as the crowning achievement of America’s commitment to dominate the high ground of space.

Reacting to the Soviet Union’s 1957 launch of Sputnik, the first manmade object to orbit the earth, the United States quickly established in 1958 the National Aeronautics and Space Administration and gave it huge resources to develop a space program that would overtake and surpass the Soviets. President John F. Kennedy placed the biggest bet in American history when, only a month after watching the Soviets celebrate Yuri Gagarin as the first man in orbit in April, 1961, he made his famous speech to a joint session of Congress, committing the U.S. to going to the Moon:

“First, I believe that this nation should commit itself to achieving the goal, before this decade is out, of landing a man on the Moon and returning him safely to the earth.” (JFK, May 25, 1961)

Easier said than done, Mr. President. How are we going to transform the stuff of science fiction and fantasy into a real flying machine that can fly to the Moon and back? And we only have eight and a half years?

Luckily for America, a young engineer named Charles “Buddy” Davis had recently graduated from Alabama Polytechnic Institute (now Auburn University) and was working for Douglas Aircraft Company in California. Brother Davis began his career working on the Thor ICBM rocket, which would evolve into the Delta program, the most successful commercial rocket system in history (and still in use today). NASA awarded Douglas the contract to make key parts of the Saturn V, the muscle behind the Apollo moon landings.

“First, I believe that this nation should commit itself to achieving the goal, before this decade is out, of **landing a man on the moon** and returning him safely to the earth.”

—JFK, MAY 25, 1961



Buddy Davis sitting at the firing panel during the Saturn V launches.

Brother Davis shared highlights of his amazing life story as the keynote speaker at this year's Founders Day banquet hosted by the San Diego Area Alumni Chapter on April 17, 2009. He regaled the assembled brothers and guests with stirring and awe-inspiring stories of his life and career, including his role at the heart of the Apollo program that put Americans on the Moon. Buddy and his wife of 47 years, Charlotte, live in nearby Laguna Niguel, California.

Buddy remembers the early days well. "We started with a blank sheet of paper," he recalls. "We had to come up with everything—the design, the materials, the systems, and the controls. Fuel, life support, launch facilities, electronics, and telemetry systems—none of it existed when we started."

Everything! How big? How tall? Who would build it, and where? How would it be transported to Florida? How will it be assembled? How do we get it on the launch pad after we assemble it? What kind of testing is required? All these questions and thousands more had to be answered, and detailed plans created, so that contractors all over America could build, test and deliver the components in time for the 1969 rendezvous with the Moon.

Charles "Buddy" Davis was the right man at the right place at the right time. A native of Alabama born in 1933 in Birmingham and raised in Mobile, he graduated in 11 years from high school in 1950. He joined the Air Force, where he applied his quick mind and knack for math and science to the new discipline of electronics, progressing rapidly in his four-year service career from a technician to a trainer. He was an air traffic controller. During his service, he kept in touch with friends from home, including Fred Denton who encouraged Brother Davis to come to college in Auburn to make the most of his brilliant mind.

"I was the first in my family to go to college, so it was a big deal. I took early exit from the Air Force to enter Auburn, and Fred made sure I had a place to stay at the Theta Chi house. Buddy was initiated in 1956. While still an undergraduate, Brother Davis exhibited the organizational and people skills that would later earn him the reputation in the aerospace industry as the man to call when programs were in trouble. Appointed Chapter Steward, Brother Davis took over a debt-laden meal program

that threatened to drag the chapter into bankruptcy. He quickly negotiated a payment program with the aggrieved suppliers that kept the chapter out of court and the brothers fed. By the time Buddy graduated in 1959 with a bachelor's degree in electrical engineering, all the bills were paid, and the brothers were eating better than ever. He later received his master's degree in electrical engineering from UCLA.

Making the most of his education, and always going where the action was, Buddy had already spent one college summer vacation in California working for Douglas Aircraft, and he returned there to work full time after graduation. Soon after, NASA came calling—fly us to the Moon, and get us back.

Buddy illustrates the magnitude of the challenge presented by the Apollo program with this story. "When we started, we calculated the guidance parameters out to 8 decimal places. The first time we tried to hit the Moon based on those calculations, we missed. So we went back to the drawing board and carried our calculations out to 12 decimal places of precision. Next time, we hit."

Remember, this is in the days before computers, digital calculators, automated precision machine tools, or solid-state electronics. Many of these marvels that are now common to our everyday life today had to be invented to make a trip to the Moon possible. Using slide rules and hand-operated machine tools, Buddy and the other engineers from Douglas Aircraft and dozens of other companies made the components of the world's largest and most powerful mechanical device that contained eight and a half million parts.

As the space program accelerated and expanded, NASA managers recognized Buddy's extraordinary talents, and assigned him to work on many critical aspects of the program. Among other key tasks, he was the man selected to push The Button: you know, "5-4-3-2-1-'fire'-liftoff?"

In the days before computers, after the vehicle was assembled to the support gantry and rolled out to the launch pad (the massive Vertical Assembly Building, the giant gantry and the monstrous rolling "crawler" all have elements designed and developed by Buddy Davis, and some are still used today for the Space Shuttle), somebody had to sit at the launch control console (also designed by Brother Davis) and push the actual button to fire the massive rocket engines—one hundred times. In fact, Brother Davis holds the world record for initiating the most large rocket launches in a lifetime, numbering more than 600 live launches and static firings.

How can you count a static firing as a launch? Buddy explains: "A static firing is exactly the same as a regular launch, except that the system is bolted to the launch pad," he relates in his soft Southern accent and precise engineer's cadence. "The preparation, countdown, fuel load, telemetry, all of it, is the same as a live launch. The machine thinks it is flying, and we used these tests to find design problems and redesign them."

Buddy's role included directing the engineering resources required to analyze the test data, find the problems, isolate and correct the problems, and then put it all back together for another test. They did this hundreds of times, redesigning the systems until they were confident that they would work when required. And when flying to the Moon, everything has to work, every time. We never lost a mission.

He was so good at this process that he was soon put in charge of overall system reliability, a discipline that is common today but was new in the 1960s. So just how do you define and measure the reliability of a system as immense and complex as the Saturn V? Brother Davis provides this concise, vivid statement of reliability. "The Saturn V system has eight and a half million parts to it. We achieved 99.9 percent reliability, which is excellent. However, that means that during the launch, we know that



Buddy Davis with field men Jon Fernandez (Tau/Florida '08) and Corey Fischer (Iota Beta/Missouri State '08) at the Indianapolis Motor Speedway during the 152nd anniversary Convention in 2008.

8,500 parts will likely fail. Reliability means making sure that none of those parts that fail will scrub the mission.”

Following the success of the Apollo missions, Buddy and Douglas Aircraft—now McDonnell Douglas—made launching payloads into orbit economical and routine with the Delta program, launching an average of one per month for more than four decades. The program continues today, with Delta launches scheduled through 2013. His resume’ also includes the Harpoon missile—an all-weather, over-the-horizon, anti-ship missile system, the KC-10 aircraft aerial refueling tanker, and the mast-mounted visual laser and infrared sensing system for Scout helicopters. This MMS system allows an unarmed scout helicopter to find, identify and target enemy assets while hiding behind hills, trees or buildings.

The aerospace industry’s insiders know Brother Davis as a pioneering engineer and rocket man who was equally familiar with the corporate boardroom. He earned the reputation as the man who could take programs in trouble and turn them around, fixing the engineering problems as well as the organizational and administrative challenges. When you wanted a success, you called Buddy Davis.

He was asked why he chose electrical engineering as his career: “It’s where the money was at that time.” Never content, Buddy was always looking to improve. “I was fortunate enough to earn a good steady salary, so I started working with a broker to invest some of my money. After six months, half of my money was gone, and I thought, who needs a broker? I think I can do better all by myself. So even after a 60-hour week at work, I started spending at least two hours a day on learning how to invest and make money.”

His stock market success paralleled his engineering career, earning him enough to support his family comfortably, and giving him the means to support many educational institutions and organizations. He is a principal benefactor for the College of Engineering at Auburn University, where, in June of 2007, at a ceremony attended by state and local dignitaries and distinguished Auburn alumni, the Aerospace Engineering building was rededicated as the Charles E. Davis Aerospace Engineering Hall. His \$4 million gift is the third largest in the history of the college.

He said at the time, “I feel so honored to represent the thousands of engineering students who have graduated from Auburn who have been an integral part of the space program—from Auburn astronauts such as Jim Voss, T. K. Mattingly and Jan Davis, to NASA directors McCartney, Kennedy and Dick Smith. To be the one whose name will be on this building on behalf of all of these graduates is a tremendous privilege and an honor for me and my family.”

During his Founders Day Address, he told the story of a phone call he had just received from a young scholarship student, thanking him for helping make her college career a possibility. “It’s wonderful to be able to provide the finances that make the difference for these kids, knowing as I do how much my education helped me achieve what I have.”

Brother Davis is also a major supporter of Chi Chapter at Auburn. Buddy made the lead financial donation necessary to help the Chapter realize the completion of their new chapter house (see cover story, *The*



Al Zale (Gamma Theta/San Diego State '54) and Buddy Davis at the annual Founders Day celebration in San Diego, California.

Rattle, fall 2007), described as “the most beautiful fraternity property ever designed” by its architect.

Brother Davis provides this heartfelt example of how the principle of the Helping Hand can make a huge difference in people’s lives. “Brother Denton persuaded me to come to Auburn, made sure I had a place to stay, and helped me become a part of Theta Chi Fraternity. Theta Chi in turn helped me learn how to organize, communicate, socialize, and cooperate to solve problems and get things done, skills which were essential throughout my career.”

Brother Davis continues to support Theta Chi nationally and locally as well, attending the 2008 National Convention (see cover story, *The Rattle*, fall 2008), working with the Foundation Board, and attending Founders Day.

Rounding out his fascinating address at Founders Day, Brother Davis paid loving tribute to his wife Charlotte, also in attendance, and to his three sons—Steve, a 1988 Auburn graduate and Navy veteran, and Brian and Neil, both graduates of West Point Military Academy in 1990 and 1994, respectively. He also enjoys the attentions of four grandchildren. He and wife Charlotte finance a family vacation for all 12 members at a different location in the world every year.

Buddy’s activities include a love for cars—he has six Corvettes, including a mint 1954 with only 2,400 miles on it, a mint 1958 fuely, a 1963 split-windowed honeymoon car, along with a 1968 Firebird, five Cadillacs, and other miscellaneous cars. He bought all of them new. He also enjoys college football, supports the arts at the Orange County Performing Arts Center, and maintains a museum-quality collection of documents, photographs, blueprints and other original items from his years with the space program, a sampling of which were on display at Founders Day.

Answering questions after his presentation, Buddy was asked if instead of always pushing the button, he would have liked to be the guy riding the rocket. “Oh you bet! I’d still go today!” he answered enthusiastically. “I told (astronaut and fellow Auburn alumni) Jim Voss that any time he couldn’t make it, I’d be happy to take his place!”

In his view, how are things in the American space program different now from what they were during the Apollo program? “We had a sense of teamwork, where everybody was behind the mission, the government and all the contractors working together to get the job done right. Today, everybody is more interested in their profit.” How about the development of private space entrepreneurs? “They’re a joke. They just do not do the proper testing required, trying instead to cut costs as much as possible.”

What advice does he have for young Theta Chis in general and engineers in particular? “Education combined with effort is what makes it possible for individuals to succeed. Everything I have achieved I can trace back to Brother Denton, who got me into school and into the Fraternity. My challenge to all of you is to be the Brother Denton to some other young person just starting out.”

Brother Davis and his family have helped make America great, and Theta Chi strong. His presentation at Founders Day was a reflection of his love of life, his friends, colleagues, and Theta Chi brothers.

Bill Russo leaves IHQ staff

BY MIKE MAYER (EPSILON PHI/CENTRAL MISSOURI '04)



Anyone who has attended one of Theta Chi's international leadership events in recent years has likely met or at least heard of Bill Russo, Director of Educational Services (Epsilon Xi/Clarion University '02) at the International Headquarters. After nearly seven years of outstanding service, Bill

departed from the Fraternity's professional staff on August 28, 2009.

During his time on staff, Bill served as coordinator for two Schools of Fraternity Practices, four Chapter Leadership Conferences, seven Deranian Presidents Conferences, and numerous Mid-Year Leadership Challenges. Of particular note, Brother Russo was the principal staff member responsible for coordinating Theta Chi's Sesquicentennial Convention at Norwich University in 2006.

Bill received the Alumni Award from the Grand Chapter in 2006 and the Citation of Honor on his final day of work at the International Headquarters. No award, however, can adequately express the Fraternity's appreciation for his many years of tireless service to our Fraternity.

Thank you Bill! The countless brothers who benefited from your good work wish you the best of luck in all of your future endeavors.

IHQ welcomes new Director of Learning and Development

BY SHAWN BENNETT (GAMMA TAU/DRAKE '92)



After 14 years absence in service to the Fraternity, I am encouraged to be appointed the Director of Learning and Development. I will work closely with the Leadership Education Committee and the Member Development Committee in designing and implementing all educational programming,

including national events and a pioneering member development program. Following a five-year period of studying for and honorably serving in various ministry roles, I am reentering the field of leadership/organizational development, benefiting profoundly from a rich vocational and educational journey not often found in the traditional executive pathway. My other professional and Fraternity experience includes: six years as a for-profit Director of Training and Development; one year as the Director of Chapter Services; and two years as a Leadership and Education Consultant. I have two master's degrees including a master's degree in applied positive psychology from the University of Pennsylvania, where I learned from and with some of the world's foremost experts in individual and organizational potential/transformation. My most passionate area of expertise is strengths-based leadership and organizational development.



The 2009/10 Field Staff from left: Bart Zino, Phillip Burns, Jason Handberg, Corey Fischer, Tim Uhrich, and Jimmy Cox

Bart Zino Leadership and Education Consultant

Iota Theta/University of Central Florida '08 Major: Journalism

Bart is a founding father of the Iota Theta chapter; and served as Installation Chairman and Director of Public Relations. Bart also wrote for UCF's student newspaper, the Central Florida Future, and won two regional awards for feature writing. Eventually, Bart hopes to attend graduate school to study sociology but for now is looking forward to another year on the road.

Phillip Burns Expansion Coordinator

Iota Lambda/Longwood University '08 Major: Political Science, history

A 2008 graduate of Longwood University, this is Phillip's second year as an Expansion Coordinator. While serving two terms as Student Body President, Phillip was also a Founding Father of the Iota Lambda Chapter; and was recognized as a Who's Who Recipient. Upon completion of his second year, Phillip plans to start taking master's classes at IUPUI for Higher Education and Student Affairs.

Jason Handberg Expansion Coordinator

Gamma Tau/Drake University '09 Major: Marketing and management

Jason was very involved at Drake, as IFC Vice President of Recruitment and as an Orientation Leader. He also served Vice President of his chapter. He was also named Outstanding Greek Leader of the Year. In his free time, he enjoys basketball, baseball, and running. Jason is currently planning on attending graduate school for higher education next fall.

Corey Fischer Expansion Coordinator

Iota Beta/Missouri State University '08 Major: Geospatial sciences

While at Missouri State, Corey served as a facilitator for the Emerging Leaders Program and constructed a leadership organization for Freshman Greek students called "Junior Greek." In his chapter, he served as Fundraising Chair and Social Chair. As an Expansion Coordinator last year, he completed two successful expansion projects at Epsilon Tau/Stephen F. Austin State and Psi/Wisconsin. Corey's hobbies include working out, playing soccer, and lounging by the pool on a nice day.

Tim Uhrich Leadership and Education Consultant

Omega/Pennsylvania State University '09 Major: Political Science, history

Accepting the call to higher service within the Fraternity, Tim plans on working as a consultant before attending graduate school in the field of Higher Education Policy. Tim is an Eagle Scout and an avid volleyball and soccer fan, and would one day like to serve as the dean of students or director of student affairs at a major university.

Jimmy Cox Leadership and Education Consultant

Alpha Delta/Purdue University '09 Major: Political Science, history

Brother Cox served his chapter as President for two years and as Vice President for one. On why he became an LEC, Jimmy explained, "Theta Chi is the best thing that has ever happened in my life. This is one way in which I can repay the Fraternity for all it has given me and will continue to give me." In the future, Jimmy hopes to attend law school to study criminal law and one day run for political office.



Dan Fleetham, Jr. (Theta Chi/Grand Chapter Honorary '06) and Dan Fleetham, Sr. (Alpha/Norwich '34) present an award from Alpha Chapter to Delta Chapter President Jacob Kalencik ('08).



Epsilon brothers, clockwise, from front left: Dave Wardell ('79), Mr. and Mrs. Mike Morel ('82), Dave DesRoches ('81), Alan Weiner, and Paul Landino ('76).

Delta Chapter Celebrates 100 years

BY RICH BOROWAY (DELTA/RPI '73)

Delta Chapter celebrated 100 years at Rensselaer Polytechnic Institute in Troy, New York, on November 8, 2008, with a gala dinner at the Heffner Alumni House.

Nearly 200 undergraduate brothers, alumni and guests gathered in Troy on Friday evening and attended the football game and tailgate parties on Saturday afternoon. Lew D. French, III ('83) chaired the semiformal dinner Saturday night. National President Doug Allen represented the Grand Chapter, and Alpha Chapter's oldest living member, Dan Fleetham, Sr. (Alpha '32), also attended. Delta's 100th celebration was timed to coincide with the last varsity football game on the middle-of-campus '86 Field.

Delta Chapter was founded in September 1908 and has occupied four different locations in Troy, including the current chapter house at 2100 Burdett Ave. The Alumni Corporation is well on its way to a \$1 million capital campaign to upgrade that facility, originally designed by Graham Williams ('54).

Delta brothers have always been active in on-campus politics and many have served as Grand Marshal (the highest elected position on campus) and as President of the Union (the second highest position). Delta Chapter brothers have distinguished themselves on the athletic fields at RPI as well: more than a dozen are honored in the RPI Athletic Hall of Fame.

Theta Chi's alumni have also heeded the call of "Alma Mater first and Theta Chi for Alma Mater" by playing very important roles in Rensselaer's alumni organizations. Five of our brothers have served as presidents of the

Rensselaer Alumni Association, and three have won the RAA's highest honor, the Distinguished Service Award. Also, Earl "Dusty" Rhodes ('21) guided the chapter for decades as an alumnus.

For many years Delta alumni also served Theta Chi on the national scene, and five alumni have won the Distinguished Service Award. And, of course, the first recipient of the Earl "Dusty" Rhodes Theta Chi For Life Award was our own beloved Dusty Rhodes.

Epsilon Chapter 100 years old and going strong

BY JOAQUIN MATHO (EPSILON/WPI '07)

Almost 300 brothers, alumni and guests gathered at the Crowne Plaza Ballroom in Worcester, Massachusetts, to celebrate Epsilon Chapter's 100th anniversary. Joining them were special guests Daniel Fleetham (Alpha '34) and Epsilon Building Association President Emeritus Paul Landino ('76), who both had very inspirational messages to share with the Centennial attendees.

The chapter was presented an award from the university for its contributions and growth on the WPI campus throughout the years. Grand Chapter Marshal Rich Partridge (Theta/Massachusetts '91) presented Jim Melvin ('85) with the Earl "Dusty" Rhodes Theta Chi for Life Award for his many years of dedicated service to the chapter and National Fraternity. Jim is the youngest recipient at 47. Also recognized was Jonathan Barnett ('74) for his more than 20 years of service as the chapter's Alumnus Advisor. Epsilon Chapter also presented a \$2,500 donation to the St. Jude Children's Research Hospital.

Epsilon Chapter traces its roots back to Pi Omega Pi, a local fraternity founded by nine students on October 12, 1905. An athletic society, Pi Omega Pi required students seeking membership to earn a varsity letter before they would be permitted to join. Inspired by an increase in membership, the Pi Omega Pi brothers decided to join a national fraternity, and successfully petitioned Theta Chi in February 1909.

The Pi Omega Pi brothers were initiated on March 20, 1909, and met as Epsilon Chapter for the first time on March 23. The chapter moved to its current house location in 1917.

Epsilon went through some hard times in the late 1960s and mid-1970s when the brotherhood had lost adequate guidance and leadership. Brothers Paul Landino and Eric Paulson ('77) are credited with saving the chapter in 1975 by shifting the chapter's values back to those expressed in our Creed. Their work paid off, and the Brotherhood once again saw a growing interest in membership. By the mid-1980s, Epsilon's undergraduate membership had rebounded to over 100 brothers, the highest in the chapter's history.

Epsilon is proud to have hosted a National Conference in 1922, as well as three Regional Conferences in 1979, 1990, and 2004. The chapter has also been awarded the prestigious Howard R. Alter, Jr. Award for Chapter Excellence six times since 1985. Today Epsilon boasts a growing chapter filled with leaders recognized for their many contributions on campus. In the fall, Epsilon will be hosting its acclaimed, third annual "Up 'Til Dawn" philanthropy event, benefitting St. Jude's Children's Research Hospital. The chapter looks forward to the beginning of the next century in Epsilon's history and is taking great strides toward becoming a powerful and respected organization at the WPI campus.

Θ University of Massachusetts

Brother Joseph Sklut ('09) was awarded a 2009 Truman Scholarship. The Truman Scholarship is one of the nation's top honors for undergraduates, and out of more than 600 applications, only 60 awards were given this year. Truman Scholars receive up to \$30,000 to attend graduate or professional school to help prepare for careers in government or public service.

X Auburn University

The Savannah (Georgia) Bar Association awarded Brother Patrick O'Connor ('78) the Frank Cheatham Professional Award in June. The Cheatham Award honors attorneys who have demonstrated outstanding professional conduct.

Ψ University of Wisconsin

News anchor Steven Stadelman ('80) took over as morning news anchor for WTVO's "Daybreak" program (now "WTVO Channel 17 Morning News") in December 2008. Brother Stadelman has worked with WTVO for 21 years and formerly anchored the 6 p.m. and 10 p.m. broadcasts. Brothers living in the Rockford, Illinois, area can watch Brother Stadelman weekday mornings from 5:30 to 7, and weekday afternoons at 5.

AZ University of Rochester

The University of Rochester announced that it will name its engineering school in honor of Brother Ed Hajjim ('58) as recognition for his



Gamma Xi Chapter brothers from the '60s held a reunion in Reno, Nevada, June 26-28, 2009.

more than 30 years of service and contributions to his alma mater. Brother Hajjim has been a member of the University's Board of Trustees for more than 20 years and was elected chairman last May. The Edmund A. Hajjim School of Engineering and Applied Sciences was dedicated during Meliora Weekend, October 8-11, 2009.

AI Indiana University

Brother Bill Tosheff ('51) was honored at this year's NBA All-Star Game in February for his continued service to the game of basketball. Brother Tosheff joined the Indianapolis Olympians after graduating from IU and became the NBA's first Rookie of the Year for the '51-'52 season. He left the NBA after the 1954 season and pitched for the Milwaukee Braves for six years. In 1998, Brother Tosheff was inducted into the Indiana Basketball Hall of Fame.

BZ Michigan State University

Former Executive Director Dave Westol ('73) received four awards for interfraternalism last year: the Accolade for Interfraternal Service from Kappa Alpha Order; the Richard H. Sudheimer Interfraternal Service Award from Triangle Fraternity; the Durward W. Owen Interfraternal Award from Pi Kappa Phi Fraternity; and the Ronald H. Jury Interfraternal Friendship Award from Phi Mu Delta Fraternity. "Each is very significant to me," he said. "I am humbled to be recognized by these men's national fraternities."

ΓE San Jose State University

Brother Eric Jayaweera ('92) joined financial firm Goldman-Sachs in March 2009. Brother Jayaweera previously worked at UBS Financial Services as head of the emerging-market credit trading desk.

ΓII University at Buffalo

This past October, Jack Huebsch ('67) and more than 50 alumnus brothers gathered in Buffalo, New York, for the eighth Alumni Reunion. The gathering has been held every five years since their graduation 40 years ago. This year's weekend of activities was held in conjunction with UB's Homecoming Weekend and was coordinated by three brothers from the class of '69: Joe Bachovchin, Ken Shirmuly, and Bob Curns. The brothers cheered on the UB football team to victory in their game against Army on their way to the MAC championship and their first ever appearance in a postseason bowl game.

ΓT Drake University

Joel Bennett ('92) assumed Executive Director duties for A Call to Serve (ACTS) Ministries of Iowa at the end of June 2009. As a co-founder of ACTS Ministries in 2006, Joel says he wasn't trying to change the world so much as connect those who needed assistance with those willing to lend a helping hand—

Save the Dates!

Second Annual Alumni Golf Outing
February 25-27, 2010
Crosswinds Golf Course
Savannah, Georgia

Thursday Evening: 9 hole par 3 outing under the lights
Friday: 4 man scramble event
Saturday: Individual stroke play, gross & net
Saturday Evening: Celebration banquet

For details and registration, go to www.thetachi.org

something he learned during his undergraduate years with Theta Chi. ACTS Ministries provides opportunities for those interested in serving others through the work of their hands. Since 2006, ACTS has provided more than 890 volunteers and 4,850 volunteer hours in 13 Iowa communities.

ΓΥ Bradley University

On April 4, 2008, the Grand Chapter presented General John M. Shalikashvili (Gamma Upsilon '58), former Chairman of the Joint Chiefs of Staff, with Theta Chi Fraternity's Distinguished Achievement Award at a dinner following the Grand Chapter's meeting in Seattle. The Distinguished Achievement Award was approved by the National Convention in 2004 and recognizes those members who have demonstrated exceptional professional accomplishments or civic service. Fifty-one Distinguished Achievement Award recipients have been named to date. General Shalikashvili is the first living recipient of the award.



ZII Old Dominion University

Brother Pete Osman ('69) was named Executive Director of Toys for Tots in Quantico, Virginia in 2007.

HK James Madison University

On October 25, 2008, Director of Undergraduate Services Ben Hill ('02) was married to his lovely wife Erin near their hometown of Gettysburg, Pennsylvania. Four of his groomsmen were men that he had traveled with on the Field Staff. Joining them were other brothers from Eta Kappa Chapter.



Ben Hill (Eta Kappa) was joined by four former field men at his wedding. Bottom row, from left to right: Mike Mayer (Epsilon Phi/Central Missouri '04), Lucas Elgie (Alpha Phi/Alabama '05), Philip Thornton (Gamma Theta/San Diego State '05), and Josh Wilson (Delta Kappa/Ball State '03).



Skibums 2009

Brothers Return to the Slopes for the 28th Ski Trip

JAMES J. MOYLAN (GAMMA LAMBDA/UNIVERSITY OF DENVER '69)

Eight stalwart Theta Chi brothers from three chapters participated in the 28th Annual Theta Chi Fraternity Ski Trip to Mammoth Mountain in Mammoth Lakes, California from Saturday, February 28 to Wednesday, March 4, 2009.

Representing Gamma Theta Chapter at San Diego State University were Brothers Dave DeVol (Ski Trip Organizer), Al Zale (Mountain Guide), Mark Manlove, and Hank Griffin. Also, three brothers from Theta Iota Chapter at the University of California- Santa Cruz were again on the ski trip: Herb Morgan, Harris Miller, and Chris Hackett. Finally, Jim Moylan rounded out this year's Theta Chi ski team.

While we have enjoyed much better weather over the years, the brotherhood and fellowship were omnipresent. The ski trip began in customary fashion with the opening banquet and ceremonies at Whiskey Creek Restaurant. An excellent dinner and accompaniments fortified the team for skiing on Sunday, though unfortunately, in icy conditions.

Sunday night, the ski team enjoyed dinner prepared by Harris Miller and sous-chef Mark Manlove. We whiled away the evening relaxing and watching some DVDs in the spirit of Theta Chi Brotherhood.

Monday proved to be the worst weather day in the last decade of the ski trip to this author's memory. It poured rain all day and the skiers resorted to other devices to keep themselves amused, entertained and otherwise occupied.

Dinner at Roberto's for Mexican food in downtown Mammoth Lakes brought the team together again for an evening of camaraderie and brotherhood.

Since Tuesday was our last chance to ski, we did get on the mountain despite an increasingly intensifying snowstorm that carried over to our departure day on Wednesday.

Of course, the ski trip would not be complete without one last splurge for our closing banquet. This year it was the restaurant at Convict Lake's turn and, as always, it did not disappoint.

The ski team, ever optimistic, believes next year's trip, the 29th Annual, will be blessed with great weather and wonderful snow conditions.

Next year's trip will be held from Saturday, February 27, to Wednesday, March 3, 2010, at Mammoth Mountain, California. For more information and reservations, please contact Brother Dave DeVol at ddevol@aol.com.

CHAPTER ETERNAL

- ALPHA**
Norwich University
Andrew T. Boggs III, 1947
Maj. Gen. Reginald M. Cram, 1936
Richard L. Keenan, 1945
William W. Orr, 1956
- BETA**
Massachusetts Institute of Technology
Richard J. Decloux, 1953
- GAMMA**
University of Maine
Dr. Paul M. Beegel, 1942
- DELTA**
Rensselaer Polytechnic Institute
Curtiss S. Beach, 1957
Floyd C. Cole, 1948
Daniel H. Scheel, 1956
- EPSILON**
Worcester Polytechnic Institute
Harold B. Bell, 1934
William A. Brutsch, 1962
David L. Gendron, 1964
John T. E. Hegeman, 1945
Kevin F. Keene, 1999
Theodore A. Mellor, 1949
William F. Sheehan Jr., 1951
Everett J. Sholl, 1965
Philip J. Walker, 1942
- ZETA**
University of New Hampshire
Allan D. Fischer, 1959
William F. Kidder, 1936
Colonel Robert M. Piper, 1941
- ETA**
University of Rhode Island
Frederic C. Clarke Jr., 1950
Herbert M. Hofford Jr., 1958
John C. Horan, 1959
Richard S. Sweet, 1961
- THETA**
University of Massachusetts
Michael E. Dodelin, 1973
Alan T. Kelley, 1958
George G. Lesure, 1956
Robert P. McDonough, 1963
Cyril M. Merritt, 1952
Aldrick A. Palmer, 1951
Victor M. Pizzotti, 1982
David E. Soles, 1962
Peter D. Tyer, 1957
John H. Vondell, 1943
Jeffrey M. Wheeler, 1963
- IOTA**
Colgate University
Robert E. Croft, 1933
Douglas Deacon, 1978
Robert F. Gilt, 1943
William S. Hendry Jr., 1953
Robert A. Mues, 1946
Willard C. Roberts, 1935
Burton K. Wasser, 1953
- KAPPA**
University of Pennsylvania
Edward C. Hawthorne Jr., 1951
Archie S. Morton, 1951
Irving C. Spiers Jr., 1941
- LAMBDA**
Cornell University
Peter R. Cummins, 1960
- NU**
Hampden-Sydney College
Allen L. Dahl, 1962
William C. Finch, 1929
- XI**
University of Virginia
Jesse W. Cumbia, 1948
- OMICRON**
University of Richmond
Samuel C. Epes, 1939
Eames A. Powers Jr.
- PI**
Dickinson College
Rev. Austin H. Armitstead, 1948
Harold E. Dunkle, 1951
Joseph C. Moore Jr., 1949
Homer A. Plimpton Jr., 1951
Frederick S. Wilson, 1948
Peter B. Zuyus, 1964
- SIGMA**
Oregon State University
Robert L. Kruse, 1944
Bruce K. Nichols, 1946
- TAU**
University of Florida
Lawton W. Blanton, 1936
Bernard C. Boggio, 1952
D. S. Cone, 1936
Norman M. Dennis, 1944
William E. Garner, 1943
George E. Judy
Arthur H. Landau, 1956
Glenn E. Loughridge, 1933
Harvey K. Meyer, 1936
Thomas E. Smith, 1934
H. Q. Stevens, 1922
Virgil E. Strickland, 1939
Franz W. Warner, 1942
William H. Wheeler, 1951
Adam P. Worthington, 1994
- UPSILON**
New York University
G. Addison Porter, 1935
- PHI**
North Dakota State University
Charles W. Jacobsen, 1945
Delmore E. Smith, 1933
- PSI**
University of Wisconsin-Madison
Peter C. Christophis, 1959
Steven C. Cole, 1962
Lambert R. Dralle, 1951
Eugene A. Jaroch, 1948
Ronald F. Kerstein, 1959
Robert M. King, 1957
Robert S. Klang, 1948
Michael E. Mueller, 1960
- OMEGA**
Pennsylvania State University
Howard R. Alter Jr., 1941
Gerald E. Brown, 1947
Edmund G. Geiger, 1940
Paul S. Handwerk, 1942
Joseph T. Parker III, 1953
William H. Renton, 1946
- ALPHA BETA**
University of Pittsburgh
Maurice K. Hillegas Jr., 1944
John B. McCreary, 1951
- ALPHA GAMMA**
University of Michigan
James A. Somers, 1948
- ALPHA DELTA**
Purdue University
Hugh M. Delvalle, 1941
James A. Marks, 1948
Charles T. Ostick, 1960
- ALPHA EPSILON**
Stanford University
Richard E. Jenkins, 1943
- ALPHA ZETA**
University of Rochester
Hubert W. Brown, 1929
Robert S. Gurney, 1942
Robert A. Laurer, 1944
William H. Smith, 1941
- ALPHA IOTA**
Indiana University
Merritt W. Diggins, 1935
George T. Engelman Jr., 1941
Tracy W. French, 1973
Russell P. Harker, 1913
Leland E. Macer, 1926
James P. McNeile, 1952
David L. Rowland, 1953
- ALPHA KAPPA**
West Virginia University
Howe C. Stidger, 1932
- ALPHA LAMBDA**
Ohio State University
Robert C. Bolon, 1949
James D. Saris MD, 1943
Edwin L. Willbarger, 1936
- ALPHA MU**
Iowa State University
William J. Bigger, 1934
Gerald N. Erickson, 1951
Dr. Hesse F. Garner, 1950
James I. Heiken, 1955
Richard C. Vogel, 1939
- ALPHA NU**
Georgia Institute of Technology
Hugh W. Tracy, 1924
W. G. Woodside Jr., 1931
- ALPHA XI**
University of Delaware
Thomas J. Daly, 1964
George T. Lord, 1960
Mariano Stalloni, 1950
Dr. Frank B. Thomas, 1944
Alvin O. Tingle, 1940
- ALPHA OMICRON**
Washington State University
Robert D. Abendroth, 1964
William F. Geppert Jr., 1952
Craig L. Glasser, 1992
Ensign M. Gwinn Jr., 1944
Ralph Haas Jr., 1944
Donald R. Klarich, 1951
Ernest C. Marinig, 1951
Kyle B. Prescott, 2009
- ALPHA PI**
University of Minnesota
Bruce A. Abrahamson, 1949
- ALPHA RHO**
University of Washington
Dr. James H. Rondeau, 1955
- ALPHA SIGMA**
University of Oregon
Dennis S. Dodge, 1968
Edward S. Vannet, 1950
Irwin J. Zeller, 1940
- ALPHA TAU**
Ohio University
Joseph A. Scheib, 1981
- ALPHA PHI**
University of Alabama
Charles A. Alford Jr., 1950
Wilbur C. Armstrong, 1950
Barry E. Beckett, 1965
Urban C. Bergbauer, 1943
Rex W. Black, 1950
John P. Burton, 1970
Iris W. Carmack, 1930
Robert S. Chesterman, 1937
Lewis J. Cook Jr., 1953
Robert L. Cooper, 1939
William R. Craft, 1943
Robert T. Diamond, 1957
Charles K. Gaal Jr., 1941
Francis J. Harrison Jr., 1957
Fred J. Kildron, 1951
Richard E. Merrill, 1949
P O. Nelson, 1929
Ralph M. Roberts, 1940
David S. Sims, 1945
Hernley R. Tout, 1939
John R. Troth, 1940
Jerry Wilson, 1952
- ALPHA CHI**
Syracuse University
Donald E. Hitchcock, 1943
Frank G. Smathers, 1947
- ALPHA OMEGA**
Lafayette College
John M. Allan, 1945
- BETA ALPHA**
University of California-Los Angeles
George W. Hesdorfer, 1939
- BETA DELTA**
Rutgers University
Dr. John W. Goodman, 1955
George D. Hessmann, 1949
Charles R. Moog MD, 1938
Thomas C. Moore, 1954
John M. Neidhart, 1951
Bruce H. Parker, 1951
- BETA EPSILON**
University of Montana
Gary M. Fink, 1960
- BETA ETA**
Washington College
John E. Barnes Jr., 1947
- BETA THETA**
Drexel University
John E. Downs, 1951
Arthur A. Haines, 1947
Joseph C. Kalinowski, 1947
John H. Kestler, 1945
Leo F. O'Connor, 1954
- BETA IOTA**
University of Arizona
Joseph M. Dalton, 1952
Robert E. Lechich, 1953
- BETA LAMBDA**
University of Akron
Paul F. Bartlett, 1939
Ray E. Twinem, 1952
- BETA NU**
Case Western Reserve University
Robert E. Cooper, 1969
Robert T. Hook, 1941
Leroy L. Johns, 1949
Thomas B. Kubiak, 1960
Alfred R. Toole, 1943
- BETA XI**
Birmingham-Southern College
Edwin C. Kirk, 1961
- BETA OMICRON**
University of Cincinnati
Donald R. Adams, 1955
David T. Alexander, 1958
Kenneth L. Aplin, 1957
Robert P. Brandmayer, 1963
Jerry L. Davis, 1958
Tony R. Demello, 1958
John C. Hattendorf, 1956
Glen E. Irick, 1959
Joseph D. Kern, 1951
John A. Pollard, 1955
Robert H. Raible, 1958
Richard A. Salisbury, 1959
Donald F. Schomaker, 1962
Harry E. Shambaugh, 1962
Jerry R. Taylor, 1957
Henry J. Weller Jr., 1957
James J. Yerdon, 1956
- BETA PI**
Monmouth College
William R. Durham, 1957
- BETA RHO**
Illinois Wesleyan University
Robt S. Bremner Jr., 1939
Dr. Orrin E. Meyers, 1931
- BETA TAU**
University of Southern California
Thomas A. Harris, 1961
David W. Small, 1953
- BETA UPSILON**
California State University-Fresno
John T. Pryor, 1980
- BETA CHI**
Allegheny College
Harris B. Dreibelbis, 1949
Elmer N. Nelson, 1947
- BETA PSI**
Presbyterian College
John P. Bowers, 1945
- GAMMA BETA**
Furman University
Joseph R. Ridgill, 1937
- GAMMA DELTA**
Florida Southern College
Richard L. Durbin, 1958
James S. Hagedorn, 1965
Arthur P. McKeown Jr., 1947
Charles R. Queipo
- GAMMA ZETA**
Oklahoma State University
Noel T. Johnson, 1954
Paul W. Messick, 1953

GAMMA ETA

Bucknell University
Albert E. Becker Jr., 1950
J Melvin Kennedy, 1953
Michael I. Londner, 1956
Edgar A. Luce, 1950
Robert C. Paul, 1953
Nelson M. Smith Jr., 1958
Andrew H. Speirs, 1949
Stephen P. Yeatman, 1968

GAMMA IOTA

University of Connecticut
Edward M. Kenney, 1951

GAMMA LAMBDA

University of Denver
Almon F. Brunkow, 1950

GAMMA MU

Bowling Green State University
Edwin E. Bowersox, 1950
Robert W. Oller, 1951

GAMMA XI

San Jose State University
Robert E. Bird, 1953

GAMMA PI

University at Buffalo
Garett L. Geake, 1993

GAMMA RHO

Florida State University
Dave Harden, 1952
Dr. George E. Kaugars, 1971
James W. Kyle, 1956
Richard J. Trudeau, 1959

GAMMA TAU

Drake University
Karl O. Kassulke, 1963
James H. Sawyer, 1952

GAMMA UPSILON

Bradley University
Charles E. Bradshaw, 1960
Major Donald R. Brian, 1956
Harold C. Young Jr., 1975

GAMMA PHI

Nebraska Wesleyan University
Richard H. Meyer, 1950
Robert B. Underwood, 1992

DELTA ALPHA

Linfield College
Jerry G. Abbott, 1962
Earl W. Anderson, 1951
Dennis W. Crow, 1964
George C. Fetter, 1943
Cal B. Rees, 1967
Kenneth W. Twedt, 1952

DELTA BETA

University of Georgia
Terrell L. Brooks, 1958
Victor P. Galgano, 1952

DELTA GAMMA

West Virginia Wesleyan College
Lester C. Brady, 1951
John W. Farrell, 1982
Robert H. Graham, 1970
John H. Hartley, 1962
Joseph J. Morock III, 1969
Donald F. Rainey, 1960

DELTA IOTA

Northwestern University
Pascal L. Trohanis, 1965

DELTA KAPPA

Ball State University
Cletus R. Gardner, 1955
Willard G. Kennedy, 1951
Wayne L. Lechlitner, 1960

DELTA MU

University of Texas
Willis H. Castner, 1954

DELTA NU

University of Vermont
G. Millard Simmons Jr., 1961

DELTA XI

Valparaiso University
Paul W. Borlick, 1958
John R. Marquart, 1973
John W. Wehling, 1987

DELTA OMICRON

Gettysburg College
Clair E. Heinbaugh, 1959

DELTA RHO

North Carolina State University
Alan M. Chedester, 1962
Curtis J. Vaught, 1968

DELTA TAU

Kent State University
Kevin J. Fuller, 2003
John F. Webster, 1966

DELTA PHI

University of North Texas
James Scott Buchanan, 1959
Terry L. Gregory, 1972
Victor W. Terry, 1955
Dwain H. Warren, 1957

DELTA CHI

Lenoir-Rhyne University
George H. Dwyer III, 1971
Harrison S. Kowiak, 2011

EPSILON ALPHA

High Point University
James L. Crawford III, 1971

EPSILON BETA

Lycoming College
Charles W. Long Jr., 1978

EPSILON GAMMA

Wilener University
John L. Godfrey III, 1967

EPSILON ETA

*Indiana University of
Pennsylvania*
Brian K. Pulliam, 2004

EPSILON IOTA

East Carolina University
Tony M. Brandon, 1960
Burke F. Clark, 1968
Seaton P. Fairless Jr., 1960

EPSILON RHO

Rider University
Keith Robinson, 1975

EPSILON TAU

Stephen F. Austin State University
Larry P. Alexander, 1984

EPSILON PHI

University of Central Missouri
Todd E. Hamann, 2007

ZETA BETA

Adrian College
James C. Campbell, 1971
Douglas Carter, 1968
Richard W. Howe, 1961

Dick Meyer joins Chapter Eternal

BY AL BULLINER (BETA SIGMA/LEHIGH '65)

[Editor's note: Brother Richard 'Dick' Meyer (Gamma Phi/Nebraska Wesleyan '50) passed away on April 29, 2009. He was 83. Brother Meyer left an indelible impact on his chapter and our Fraternity. Below, Brother Al Bulliner reflects on his relationship with Brother Meyer and the legacy he left behind.]

Dick Meyer was a brother who took a pure joy in his Fraternity membership throughout his life, and projected that same joy for others to see. For that reason, he was a great example for younger brothers.

Dick and I joined the Grand Chapter together, along with Tom Van Cleave, at the Chicago Convention in 1978. We had all been Regional Counselors, but Dick was the "senior" one of the three of us (by a generation or so), so Tom and I looked up to him as we prepared to take on the daunting duties of National Officers. In addition, Dick's wife Betty was amazingly supportive of Dick's work in Theta Chi and became our de facto "den mother."

Since I was chosen for the role of National Counselor, it was my duty to assign Grand Chapter members to attend the dozen or so Regional Conferences that were held around the country each year (predecessors of today's MYLCs). The first one that year was St. Paul, Minnesota, in early February—hardly a plum assignment. So I assigned myself, and Dick. Dick was absolutely at his best in the social milieu, enjoying cocktails at the reception (hey, it was a different day) and charming the dates of the undergraduate members (ditto). By the end of the Conference, Dick and I had agreed that we made a good team, with me in charge of talking about the Fraternity's organization, rules, etc., and Dick in charge of dancing.

I never tired of enjoying a social moment with Dick over our years on the Grand Chapter and the decades that followed. Dick remained loyal to, and involved in, his chapter at Nebraska Wesleyan in Lincoln, where he lived all his life.

Dick's other great source of pride was his Navy service. Dick graduated from high school in the middle of World War II and, like many of his generation, had to defer college until completing his service. In 2001, when Dick was in his mid-70s, he participated in a highly-publicized project in which about 30 volunteer former sailors refurbished the World War II era LST 325 and sailed it from Greece to the U.S. Later, Dick helped sail the ship from Mobile, Alabama, to Indiana, where he was visited on board by the then-Executive Director and then-Director of Development of Theta Chi. These exploits were written up in the fall 2000, spring 2001, spring 2002, and fall 2003 issues of *The Rattle*.



Richard 'Dick' Meyer

Ralph J. Lawn, 1974
Christopher P. May, 1985
William L. Saunders, 1951
Dean E. Walters, 1971
Richard F. Whitten, 1979

ZETA KAPPA
Ohio Northern University
Robert M. Storch, 1968

ETA BETA

Eastern Kentucky University
William R. Allen
Jeffery L. Barnett, 1975
Gary J. Bleichner, 1970
Thomas E. Fugate, 1972
James L. Grigsby, 1971
Hubbard K. Moore Jr., 1973

ETA CHI

George Mason University
Fernando J. Mollada, 2000

BETA KAPPA FRATERNITY

Col. James G. McCarty

Foundation Chapter of
Theta Chi Fraternity, Inc.
3330 Founders Road
Indianapolis, IN 46268-1333

Nonprofit Org.
U.S. POSTAGE
PAID
Midland, MI
Permit No. 416

Change Service Requested

PARENTS: This magazine is sent to your son's home address while he is still in college; we hope you enjoy reading it before he does. If he has left college and is not living at home, please send us his new permanent address. (Please refer to the Table of Contents.) THANK YOU!

Save these dates!

154th Anniversary Convention and School of Fraternity Practices

June 30–July 3, 2010
Orlando, FL

B. Nelson Deranian Presidents Conference

January 8–9, 2010
Indianapolis, IN

Mid-Year Leadership Challenges:

FALL 2009 DATES/LOCATIONS

November 6–7

University of Massachusetts

November 13–14

University of Nebraska-Omaha
Centenary College of Louisiana
George Mason University

SPRING 2010 DATES/LOCATIONS

February 5–6

Oregon State University
Florida State University
California State University-Long Beach
California State University-Chico

February 19–20

North Dakota State University
Ball State University

