

Winter 2023

# THE RATTLE

OF THETA CHI FRATERNITY

HOLLYWOOD

Writer, Producer

**Steve Maeda**

(Beta Alpha/UCLA 1984)



## Editor

Benjamin R. Hill  
(Eta Kappa/James Madison 2002)

## Assistant Editor

Gregoire Rush

## Contributing Writers:

Harry Anderson (Alpha Xi/Delaware 2024)  
Zach Atanasov (Alpha Xi/Delaware 2024)  
Kevin Gaydosch (Epsilon Eta/IUP 1985)  
Tony Kedzierski (Alpha Nu/Georgia Tech 2023)  
Joe Kendall (Zeta Pi/Old Dominion 1969)  
Warren Schwartz (Theta Iota/UC-Santa Cruz 1991)  
Ron Wilshire

## Published by

Maury Boyd and Associates, Inc.

**The International Headquarters** is located at:  
865 W. Carmel Drive, Carmel, IN 46032

To reach the International Headquarters staff:

MAILING ADDRESS:

P.O. Box 503

Carmel, IN 46082

PHONE: 317-848-1856

FAX: 317-824-1908

EMAIL: [ihq@thetachi.org](mailto:ihq@thetachi.org)

WEBSITE: [www.thetachi.org](http://www.thetachi.org)

To reach the Foundation Office, please email:  
[foundation@thetachi.org](mailto:foundation@thetachi.org)

*The Rattle* is the official alumnus publication of Theta Chi Fraternity. It is provided electronically to all collegiate and alumnus members of Theta Chi chapters, colonies, and interest groups. Print editions are provided to: all active contributors to the Grand Chapter and/or to the Foundation Chapter staff members; volunteers of the Fraternity; and collegiate chapters. Individuals may request a printed copy by contacting the Editor at [rattle@thetachi.org](mailto:rattle@thetachi.org) or by updating their information at [www.thetachi.org](http://www.thetachi.org).

## Contributions

**Story Submissions:** *The Rattle* welcomes all story submissions. Decisions to publish submitted materials is at the sole discretion of the Editor.

**Photo Submissions:** Please share photos of your events! Both print and electronic publication requires photos to be captured at high resolution (minimum 300 dpi, and preferably 600 dpi). Set your camera to its highest setting for maximum file size. Please do not alter or try to correct the original capture. Doing so can permanently delete information that our production team will need to process the best picture for publication. Also, please use a flash to make sure the subjects are well-lit. Large photos can be posted to an FTP site or mailed to the Editor on a flash drive. When you submit copy, photos, or video for inclusion in *The Rattle*, you agree to allow Theta Chi Fraternity, Inc., the Foundation Chapter of Theta Chi Fraternity, Inc., and The Norwich Housing Corporation the right to post, publish, broadcast, print, or otherwise use in any manner Theta Chi Fraternity, Inc. deems appropriate. All media submitted becomes the property of Theta Chi Fraternity, Inc.

Please send any materials for publication, as well as address changes, to the Editor at: [rattle@thetachi.org](mailto:rattle@thetachi.org)



# FROM THE INTERNATIONAL PRESIDENT

## One Man Can Move the Needle



Andreasen

The Great Man Theory of History would have us believe that “heroes” have been the cause of great societal change. Others say that long-term trends produce heroes who are just in the right place at the right time.

Regardless of the theory you subscribe to, I believe we all have it in us to be heroes for our chapters. **You** can make a discernible, measurable impact. Whether you are a Chapter President wielding your gavel to mete out justice to all, while giving offense to none; or you are the Treasurer making sure your collections are fair, and your books are accurate; or you serve as an adviser to your chapter providing a depth of perspective and institutional knowledge—you can move the needle by doing all in **your** power to perpetuate our chapters (and thereby our ideals).

One example is

**James Sun** (Beta Alpha/UCLA 1992), who joined his chapter’s house corporation in 2001 when they were considering selling the chapter house because the chapter had only 35 brothers. Working with a few of his pledge brothers, he started by galvanizing alumni support with a golf tournament around Founders Day. Despite the threat of rain, he successfully pulled off an inaugural event with 80 golfers and 130 people at the banquet. They also started a special alumni day tailgate during football season.

Later, as the chapter dwindled to 11 collegians, James was able to use these events (and the goodwill they had generated over the years) to enlist alumni support to save Beta Alpha Chapter by soliciting donations to create the Helping Hand Scholarship. This scholarship was open to men and women at UCLA and regardless of whether the men pledged or not. Because of this scholarship offer, they were able to obtain contact information for men with strong academic performance who would have otherwise either not pledged any-

where or may have pledged a stronger fraternity. But, if they did pledge Theta Chi, they were also awarded enough money to fund their initiation fees and a rent credit for a free year of living in the house during a subsequent year. In essence, they took an asset that was going unused (their house) and turned it into a recruitment tool. That fall, they pledged 11 men—doubling the chapter and starting the long rebuild to over 100 Resolute Men today.

James is the first to say that he didn’t do it alone—he enlisted his brothers for help. Even if you have never been elected to an office or hold no official position—you can move the needle. Find something that needs doing, enlist the support of others, and make it happen. You will find that the harder you work, the luckier you are.

I look forward to seeing each of you in New Orleans, August 2–5, as we celebrate 168 years of brotherhood. Until then—go move the needle!

Yours in brotherhood,

*Craig Andreasen*  
Craig Andreasen

International President

[Craig.Andreasen@gmail.com](mailto:Craig.Andreasen@gmail.com)

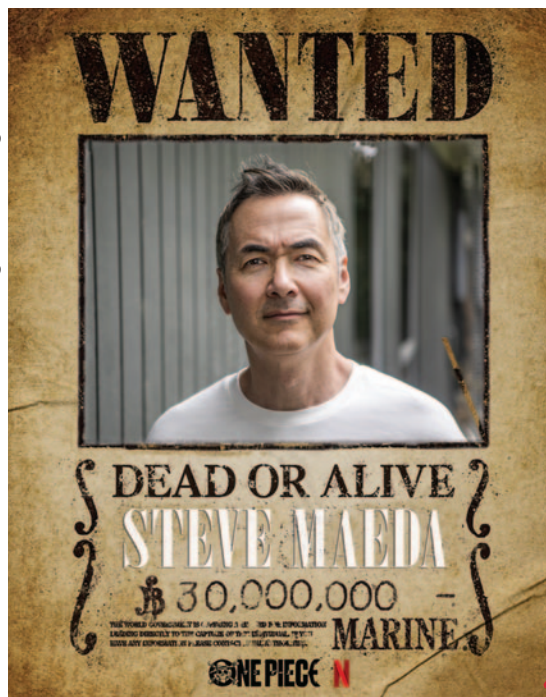






James Sun (Beta Alpha/ UCLA 1992) moved the needle not only with the brothers at UCLA, but also with his small group when he volunteered as a faculty member at the Mu Class of the Initiative Academy in 2017.

Image via strawhatgrandfleet.com



4

## on the cover

Steve Maeda (Beta Alpha/UCLA 1984) is behind the scenes as showrunner for Netflix's live-action adaptation of *One Piece*, the best-selling Japanese manga series in history.

12



14



33



## inside

- 4 FEATURE: Steve Maeda
- 11 Distinguished Achievement Awards
- 12 FEATURE: 2022/2023 Awards
- 14 From the Foundation Chapter
- 25 FEATURE: Reunions and Relics
- 26 Chapter News
- 28 Alumni News
- 37 Chapter Eternal

## follow Theta Chi



Facebook:  
@ThetaChi



Instagram:  
@thetachifraternity



YouTube:  
@thetachifraternity



Twitter:  
@thetachiHQ



Snapchat:  
@thetachi\_ihq



Flickr:  
@thetachihiq





Senior picture as seen in the 1985 *Bruin Life*, UCLA's yearbook.



Steve's senior photo redone manga-style.

Image courtesy of Steve Maeda via Instagram.





# Behind the Scenes

BY BEN HILL, EDITOR

After graduation, **Steve Maeda** (Beta Alpha/UCLA 1984) began exploring different opportunities to work in the entertainment industry in Hollywood. He found his first niche as a screenwriter, completing script revisions on the film *Murder at 1600*. He later penned episodes of *Harsh Realm*, *The X-Files*, and *CSI: Miami*. In 2005, he joined the second season of the hit show *Lost* as a supervising producer and writer. In 2006, Maeda and the other *Lost* writers were recognized with the Writers Guild of America Award for Best Dramatic Series and received nominations for the work on seasons two and three. In 2011, he began a new role as showrunner and executive producer, leading series including *Pan Am*, *Helix*, and his current project on Netflix, *One Piece*, a live-action adaptation of the Japanese manga series by Eiichiro Oda. Brother Maeda graciously took time from his busy schedule to reflect on his Theta Chi experience and to discuss his career and the entertainment industry.



Image courtesy of Steve Maeda via Instagram.

## **The Rattle: Tell us why you decided to go to UCLA.**

**Steve Maeda:** UCLA was an obvious choice for me because it was in my backyard. I grew up in Los Angeles, and I grew up a Bruins fan. So for me, it was a dream come true to get in and go there, even though it wasn't very far from home. I spent my first couple of years trying to figure out what I wanted to do and was exploring to see what was out there.

## **R: Was there always a personal prejudice against USC or did that develop in Westwood?**

**SM:** (*Chuckles.*) You grow up in Los Angeles either loving the Bruins or the Trojans and for some reason, even as far back as middle school, I was a Bruins fan. I went to USC for grad school and it was a great opportunity and it's a great school. But I still have a hard time in sports rooting for anything USC.

## **R: How did you end up joining Theta Chi?**

**SM:** During my freshman year, I went through rush in the winter quarter and a guy whom I went to high school with, **Ken Gootnick** (1985), happened to be coming out of the Theta Chi house on Gayley Avenue as I was walking past. I hadn't seen him in a while, but we had a nice conversation and he invited me to stop by. That's how it all started and ultimately, it was just the connection I felt and people being friendly. I had visited a number of houses during rush and just felt a better connection with the guys at Theta Chi.

## **R: Did you live in the chapter house?**

**SM:** Starting my second year, I lived in the house off and on over the years, including a couple of summers. I spent a lot of time there.

## **R: What did you enjoy the most as a collegiate brother in Theta Chi?**

**SM:** Oh, there's just too much to recount. It was the locus of my social life while I was in college. College is a wonderful time. It's a time to experience a lot of different things and for the first time, really be away from home and live life and discover the things you like and the people you want to hang around with and also the ones you don't. The Fraternity was always a really good time as far as just hanging out and living in the house. We definitely had a lot of fun.

## **R: Can you think of a time when you were really proud to be a Theta Chi?**

**SM:** A lot of the philanthropy work we did was really enjoyable and also for a very good cause. I think that seeing the camaraderie of this very disparate group of guys was also a really fun thing to be a part of. It was something I was looking for in my college experience and I didn't get it until I joined Theta Chi. When you go to a big college with a lot of students like UCLA, it's very easy to get lost in the shuffle and struggle to find your way and a place where you feel like you belong. It's really good to find a place or an organization to belong to, which helps you center a little bit in the midst of a giant school.

## **R: Looking back, how much of a role did your neighbors at ΣAE play in motivating you to be a better man?**

**SM:** (*Chuckles.*) I know a lot of their guys but there was definitely a rivalry that went on with the fraternity next door. It was a lot of fun. I look back on it now with a lot of humor—just the ridiculous things we got into with them. That was definitely a part of the experience.





Steve Maeda delivers a keynote address highlighting his career and lessons learned from Theta Chi during the 156th Anniversary Convention held in Palm Springs, CA, in 2012.

**R: Who are some of the brothers who personally motivated you or helped to give you direction?**

**SM:** There were a lot of really great role models in the chapter. **Scott McKinney** (1983), who was my Big Brother, **Howard High** (1982), **Neal Weichel** (1984), who was in my pledge class. There were just a lot of really great guys during the years I was there.

**R: Did you hold any positions while you were in the chapter?**

**SM:** I was Rush Chairman.

**R: Any leadership lessons you gained from being Rush Chairman?**

**SM:** Oh, absolutely. I would say any training that I had managing groups of people was a result of that fraternity experience and being Rush Chairman, more than anything else. A lot of people don't necessarily get those experiences in college. Experience matters a lot, especially if you're starting out, trying to get into entry level positions of a particular business or career choice.

**R: Anything else from your Theta Chi experience that has really helped you in your career?**

**SM:** I would say the biggest thing was learning how to get a group of people to go in a particular direction, and being Rush Chairman was my very first experience doing that. There was a lot of trial and error. I failed as much as I succeeded, and I learned a lot about trying to build consensus without necessarily having to ask every single person's opinion and how to make decisions and then roll with them but still be open to input. That is the biggest part of my current job—aside from writing and working on a show creatively—the marshaling of people and trying to get the best out of everybody on a project. That is something I absolutely had no experience in until I came to the Fraternity. I wouldn't say that I was successful all the time, but I certainly learned a lot about working with people and it's an experience I really value.

**R: Were you trying to get into the entertainment industry while at UCLA?**

**SM:** Absolutely not. I wish I had known that I wanted to get into it sooner because I would have had a lot more focus coming out of college. I eventually did have a sense that I liked the entertainment industry, but I had no connections, so I didn't really know what the jobs were or how to go about 'getting in.' I had a couple of years of really struggling and trying to figure out what jobs were available and what I really wanted to do.

**R: After 'getting in' and writing episodes for several different series, you went on to become a showrunner. What is a showrunner?**

**SM:** A showrunner is the person who is usually an executive producer on the show. There are lots of different types of executive producers: some who write, some who don't, others who may have helped put the original deal together. The showrunner is of particular importance in television because that is where the buck stops. You don't get to make all the choices on your own. You have to find a consensus with your studio, your network, and your fellow producers and executive producers. Ultimately, the showrunner is responsible for everything, even though he or she does not do everything. You're trying to get a group of people together to tell a singular creative vision. In a lot of ways, it's like the coach of a team and you're trying to get everybody's best out of them.

**R: Tell us how a showrunner brings a show to life.**

**SM:** The showrunner is the person who is responsible a lot of times in generating the idea or an underlying piece of material that could potentially make a great show. The first thing is the creative work of coming up with a pitch or a take on a show that you think is going to make an entertaining season or multiple seasons of television and convincing executives or networks that this is the direction





Image courtesy of Steve Maeda via Instagram.



One Piece star Iñaki Godoy, who portrays the lead role of Monkey D. Luffy, takes a break from shooting with showrunner Steve Maeda near Cape Town, South Africa.

to go because they're going to be spending a lot of money on this. Next, it's time to write scripts, keeping in mind how many episodes are available to tell your story, whether it's eight, 10, or in broadcast television, 20+ episodes. A showrunner gets a writers room together and is responsible for that room and helping the writers break down individual episodes, multiple episodes, arcs, and storylines so that there is a coherent season of television that people are going to want to watch next week's episode. After the writers complete their episodes, the showrunner reviews and does a final rewrite to make sure the voices are distinctive and consistent.

After the writing stage, if you have a greenlight, you go into pre-production and then production on a show and now you're ready to start shooting your show. The showrunner is not only responsible for keeping everything together creatively and making sure that all the various departments are all working in concert with each other to tell the singular vision of the show, but is also responsible for making sure that things come in on time and on budget. If the show is really good but you blow out your budget and you're not meeting your deadlines, you're in trouble.

After the show is shot, there are six months to a year of work to do on post-production, which is our editorial process. You are supervising the editors and putting the show together and the episodes together in the best way possible, and also overseeing visual effects, music, sound, and additional post-production elements.

### **R: What are some of the highs you've experienced as a showrunner?**

**SM:** The highs are when everything starts to click and come together and when people and different departments on the show start to outperform what you expected of them. When someone comes to me with a great idea, great prop, a great set design, a great line, or when an actor makes you laugh or cry in a place that you didn't expect it, it's wonderful. It doesn't matter that I didn't think of it, I'm the first person to say, 'That's great, let's get that in.'

### **R: The lows?**

**SM:** The lows are when something you thought was going to be a great idea doesn't turn out to be a great idea or not having the money

to pay for a particular thing that you really wanted is tough. I would also say dealing with egos and personalities. The most difficult experiences I've had on shows are trying to get people to work with me or to work together with other people when they didn't want to, for whatever reason.

This isn't necessarily a low, but it's a reality of the job: it can get very busy and very demanding. When I worked on my most recent project, *One Piece*, I spent four years on just one season of television, including an entire year that we spent shooting the show in Cape Town, South Africa.

### **R: What's your motivation as a storyteller? Do you want to tell a story because you personally want to tell your version of that story? To entertain people? To educate? To make money?**

**SM:** I think the answer is yes to all of those. I definitely want to entertain. I always want people to want to watch something and then have that desire to watch the next episode, for sure. That's a big part of writing for television. I also want there to be a really cool, interesting, or inspiring message that really means something to me on a personal level and I want to educate people about that message. It's not necessarily that I'm trying to preach to the audience, but in most good stories—and in all good stories—there's something deeper going on that makes a personal connection and I want to get this message out to others. It can be as simple as my recent show, *One Piece*. It has a very strong message to follow your dreams and it's childish in a lot of ways, but that's the key message. What the show really does nicely is that it taps into this idea that we all had dreams and ambitions when we were young, but they may not have come true later in life. The message of *One Piece* is that it's never too late to follow your dream or attempt to do the thing you really wanted to do. Sometimes that can be the best lesson of all.

### **R: What sparked your interest to adapt *One Piece*?**

**SM:** I knew the name of the title, but I hadn't done a lot of heavy reading into it and didn't know much about it. *One Piece* came to me through a studio I was doing another project with, and they said, 'We have this show that's based on this long-running Japanese manga. It's the most popular manga in the world and second in worldwide sales only to *Superman*. But people in the West don't really know about it, and we want to do this global show.' Based on their pitch, I knew this was a challenge I had to take a look at, and once I started reading it, I fell in love with it.

### **R: What was your biggest challenge in trying to adapt this long-running manga into live action?**

**SM:** We had to determine the tone of the show and find a balance because it can be a little wacky. We had to find a tone that people would enjoy, factoring in not only brand-new viewers, but also the original market—the huge base of passionate, diehard fans of the manga and anime. If we couldn't get it right, we knew that they would destroy us. At the same time, we're not doing a shot-for-shot adaptation. Any adaptation is going to take liberties in order to try to make a stronger season of television. The trick is finding that balance and there's no hard-and-fast rule. Some shows have been very faithful adaptations and have failed. Some shows were very far away from the source material and failed while others succeeded. We had to consider all our experience and determine that balance. Sometimes it's a gut feeling more than anything else.





Steve Maeda joins other members of the Writers Guild of America during their 2023 strike. Read his insights in the interview to the right.

**R: What was one specific thing where you said, ‘We absolutely have to get this part right.’**

**SM:** Trying to get the budget for the show up to the level that I knew it needed in order to tell this great story and do the visual effects right and build the necessary sets. Another big one for me was convincing the network to pay for the flashbacks because they are really intensive and very important in understanding who those characters are. This was not something that could be done cheaply—it’s very, very expensive to build sets that you’re only going to use for parts of one or two episodes. There were a lot of very passionate debates over what belonged in the show and what didn’t. It came down to: what can we afford and then how can we best do this so that we get maximum bang for our buck?

**R: *One Piece*’s creator, Eiichiro Oda, was involved in this project. Was that helpful or intimidating?**

**SM:** Both, for sure. He was very helpful and challenged us quite a bit. He has a reverence for the manga that no one else could possibly have because he’s been drawing it and creating it for 25 years. It was daunting to talk to him about *One Piece* because he knows it better than anybody. At the same time, he did not have television experience coming into this, so there were a lot of discussions about how to creatively adapt things that worked great in the manga into a way that might work better for the live-action series.

**R: You managed to thread the needle so well for your adaptation that critics loved it, manga/anime fans loved it, and those unfamiliar with *One Piece* loved it. How did you do that?**

**SM:** First off, it’s a great piece of material that has a great underlying story. Second, we had enough loyalty to the source material to satisfy the long-term fans, but we also weren’t afraid to veer off where we needed to tell our story. We just hit a nice balance. Another huge win for us was casting. We had great casting directors that

really scoured the entire world looking for these actors. It’s a lot of alchemy trying to get a cast together that’s going to hit the mark on their own characters and then also have great chemistry together. I think we worked very hard on that, got a little bit lucky as well, but that was a huge part of it. Getting that casting right and getting the right budget were crucial.

**R: Can you tell us a little about the recent strikes in your industry?**

**SM:** I was very much a part of those strikes and I was on strike for almost five months. Not being able to work is always terrible no matter the stage of your career. It’s no fun to go out on strike. I’ve been a part of a couple of strikes over the years. Unfortunately, that seems to be the only way to make headway on substantive issues, especially with our industry changing every couple of years now. New companies come and go and new technologies are introduced into the fray. Some of them stay, some of them don’t. This time, Artificial Intelligence (AI) was a big concern for both writers and actors. We believe there is a real danger of losing a lot of what we think is special about the creativity and expression of human beings compared to AI which is just taking things, cobbling them together, and coming up with a facsimile.

Another big issue was the training and ability to pay younger writers on staff to learn the way that I learned when I was coming up, because without that, you don’t have the next generation of showrunners.

Next, many in our industry have concerns related to this new streaming era. [Writers] get paid—or used to get paid—by episode, so when you were doing 20+ episodes, that was fantastic. There’s a lot of money to be made in doing long seasons like that. However, when you’re doing eight episodes, there has to be a different mentality. It’s not really possible anymore to get paid by episode, so there needs to be a fairer way to apportion that money for salaries. The streaming business created this new dynamic by developing shows with shorter seasons that are much more expensive and much more like movies. *One Piece* in a lot of ways is an eight-hour movie. We shot it on that type of schedule and with that kind of budget. How do we make working on that show for four years as rewarding as working on a single episode of television for four years? We haven’t quite gotten there yet, but the gains we made during the strike certainly helped in that regard, because otherwise, it’s hard for people to take jobs that they love creatively knowing that they will be losing money because of how little they may be paid in our industry.

**R: What advice would you give brothers who are interested in getting into the entertainment industry?**

**SM:** I would say the biggest thing is that any entry point you can get is a good entry point—whether it’s an internship while you’re still in school, an entry-level job, or even work at a temp agency. At one point, I was working at a temp agency that specialized in entertainment industry jobs just to get a foot in somewhere. It helped me to not only figure out the jobs I liked and wanted to do, but, more importantly, what jobs I didn’t want to do. For example, I remember working in the public relations area and I learned that it was really fascinating, but it was not for me.



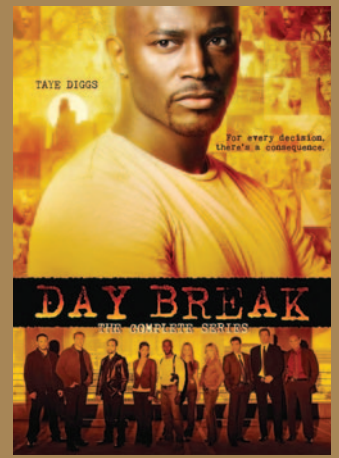


2002-2005

# A sampling of Steve Maeda's projects over the years.



2005-2006



2006-2007



Steve Maeda celebrates One Piece's season two pickup on set at Partys Bar.



2000-2002



2009



2011-2012



2014-2015



2018





Images courtesy of Steve Maeda via Instagram.



**R:** There's always speculation that brothers in your industry will insert Fraternity Easter eggs or Theta Chi references into their projects. Have you ever done that?

**SM:** There were times that I would create character names based on names of brothers from UCLA. It's been a while, so I'm trying to remember which series. When you're searching for names, especially when you're working on a broadcast show that has 20+ different episodes, you're always hunting for names. So I would dig into my past for names of characters—I was never trying to insult anybody—but just because I thought, 'That's a cool name—It's a real name. Why not use it?'

**R:** Do you find time to read or watch new content? What has caught your attention lately?

**SM:** Absolutely. It's definitely hard when you're in the middle of writing to take the time to watch or read, but I do it all the time. I find it inspires me. Right now, I'm actually watching a lot of anime and reading manga because I just think it's a huge untapped market. Our *One Piece* team broke the idea that there's a curse on anime or manga—that it can't be adapted into live-action format. It absolutely can be adapted if you do it the right way. I'm also always interested in a good show. There's so much television out there right now and movies as well. Despite all our business upheavals with the strike, there are always cool shows out there that I want to watch and discover. It's a really wonderful time in a lot of ways to be in this business. But it's also difficult because so many things are changing and the structure of these new business models are not set in stone—

they're still being defined—so there is potential that it can lead to events like the strike.

**R:** What is your definition of a Resolute Man?

**SM:** Being resolute is being able to take a punch, for lack of a better term. There are so many wonderful things that life throws at you, and there are some really difficult ones as well. I think being resolute is the ability to take the event that you may not love—it may be something that's horrible or it may be something that undercuts who you are or who you want to be—and being able to roll with it and say, 'Okay, I took a hit, it hurt, but I'm going to be able to get back up again and keep moving forward, doing the things I want to do, and doing the things I believe in.'

**R:** Anything you'd like to say to the readers of *The Rattle*?

**SM:** I think it's a very divisive time right now. Anything we can find that brings us closer together is a good thing. Whether that's in the entertainment industry or outside of it, we need to look for the common ground instead of the things that divide us, because it feels like those divisions are just getting more severe every single day. Let's find that common ground instead of the places where we disagree. At the end of the day, we have a lot more in common than we have differences and sometimes we lose sight of that. I think we lose sight of the fact that many of us want similar things, if not the same things. We just have different ways of going about it. I think it's all about staying true to your values, but also respecting others. ■





# Distinguished Achievement Awards

The **Distinguished Achievement Award** recognizes alumni for extraordinary accomplishments outside of the Fraternity, which may include success in business, government, academia, athletics, entertainment, the community, and/or any other appropriate field.



**#88 David A. Rexrode**  
(Eta Kappa/James Madison 2001)

In 2019, Dave Rexrode was named the executive director of the Republican Governors Association (RGA). Brother Rexrode had previously served as RGA's political director for four years, where he managed a \$230 million political and independent expenditure budget. He has spent two decades working to elect candidates at all levels of government and enact impactful policy initiatives across the

country. He has worked on three presidential campaigns, managed two congressional campaigns and a gubernatorial campaign, served as the national coalitions director for the Republican National Committee (RNC), and as the executive director of the Republican Party of Virginia (RPV). He has also managed and consulted on dozens of local and state legislative races across the country. In 2023, Dave founded and is CEO of Bluestone Strategies, a state-focused government, public affairs, and strategic management firm.



**#89 Bob Sasser**  
(Gamma Rho/Florida State 1973)

Bob recently retired as the executive chairman of Dollar Tree, Inc., a Fortune 150 company and North America's leading operator of discount variety stores. He joined Dollar Tree as chief operating officer in 1999, became president in 2001, and was named president and CEO in 2004. His leadership transformed Dollar Tree into a Fortune 500

company (rated #111 shortly after his retirement), growing from a small regional company in the Mid-Atlantic states to an international company with 16,000 stores across 48 states and Canada, with 200,000 employees and more than \$26 billion in annual sales.

Brother Sasser also serves on the Florida State University board of trustees, and previously served on the FSU Foundation board of trustees. He is a lifetime member of the FSU Alumni Association, a member of Seminole Boosters, a member of the FSU Presidents Club, and was inducted into FSU's College of Business Hall of Fame in 2009.

Brother Sasser has served on the board of directors of the Foundation Chapter of Theta Chi Fraternity, Inc. since 2017. In addition, he has been a generous financial contributor to the Foundation Chapter: in 2015, Bob and his wife Pam made the lead gift to our Cornerstone Campaign to endow our annual Presidents Conference, which has been named in their honor.

**#91 Donald C.L. McGuire**  
(Eta Omega/Chico, CA 1988)

Don McGuire is currently the senior vice president and chief marketing officer of Qualcomm Technologies, Inc. and leads global marketing across all Qualcomm's businesses, as the company continues to diversify beyond mobile into new growth areas. His exceptional leadership in the world of global marketing led to his selection to the 2022 Forbes World's Most Influential CMO list. He joined Qualcomm in 2016 to lead the Global Product Marketing organization and redefined its strategic approach to product marketing.

Prior to joining Qualcomm, McGuire was a senior leader at Intel, a founding member of a marketing strategy consulting firm, chief marketing officer of Amp'd Mobile, vice president of global marketing for Kyocera, vice president of sales and marketing for Leap Wireless, vice president and general manager for Sprint PCS, and a sales and marketing executive at McCaw Cellular Communications.



**#92 James C. Stalder**  
(Omega/Penn State 1962)

Following graduation, Jim Stalder acquired 38 years of experience providing tax consulting, valuation, and financial planning services for corporate and individual clients in a variety of industries at the Pittsburgh office of PricewaterhouseCoopers where he later became managing partner. He then served as dean of the graduate and undergraduate schools of business at Duquesne University (2000–2005) and as a member of the board of directors for Koppers, Inc. (2006–2013). He has also served as a member of the advisory board of Commonwealth Capital Group, a director for C-COR Inc., as chairman at the Greater Pittsburgh Chamber of Commerce, and as chairman of St. Clair Hospital.

Brother Stalder is a certified public accountant with membership in the American Institute of Certified Public Accountants (AICPA) and the Pennsylvania Institute of Certified Public Accountants (PICPA). He is a member of the AICPA Council and a past president and member of the council of PICPA.

Brother Stalder is a life member of Carnegie Mellon University's board of trustees and served for 20 years as an adjunct professor in its business school. He has also served as a member of the board of directors for Penn State's Smeal Alumni Society and received the 2008/2009 Accounting Department Distinguished Alumni Award.



All Distinguished Achievement Award recipients are enshrined in the Fraternity's Hall of Honor at the International Headquarters. To date, out of our 200,000+ brothers, only 92 have received the award. Brothers are welcome to visit the Theta Chi Museum and Hall of Honor. Call 317-848-1856 for hours.





# Theta Chi Recognizes Excellence

## 2022/2023 Reginald E.F. Colley Award

**Kyle Goodban** (Gamma Phi/Nebraska Wesleyan 2023)



Brother Goodban first served as Scholarship Chairman and then as Chapter President for two terms. During his presidency, he opened the chapter's Sacred Purpose events to campus and placed emphasis and importance on Greek Week and maximizing involvement in the campus community. During his two terms, Theta Chi was the highest-ranked fraternity during Greek Week for both years and Gamma Phi Chapter received the 2021/2022 Alter Award and the 2020/2021 Chapter Achievement Award.

On campus, Goodban won the NWU Student Life Award, was recognized as a "Who's Who" among the senior class, and

was listed as a "Platinum Prairie Wolf," an award presented during homecoming week as a high honor for the contributions of graduating seniors. He was also the second-ever Greek leader to be awarded Chapter President of the Year twice by the NWU Greek community.

At the International level, Goodban was selected among all of Theta Chi's Chapter Presidents for the Fraternity's Chapter Presidents Advisory Council and served from 2021 to 2023. During spring 2023, he earned the Resolute Man distinction.

A member of Order of Omega, Blue Key Honor Society, Phi Epsilon Kappa Honor Society, and Phi Kappa Phi Honor Society, Goodban was on NWU's Academic Honors List each semester and graduated with a 3.99 GPA while pursuing his bachelor's degree in athletic training. He studied abroad in Ireland and learned from top scholars in physiotherapy, faculty at Trinity College & University College Dublin, and members of the Irish Gaelic Athletic Association. During his senior year, he completed his clinical rotation with NWU's off-season sports programs and obtained his certification to practice athletic training in the state of Nebraska.

Goodban is currently in his first year at the University of Nebraska Medical Center in the Doctor of Physical Therapy program and is excited to graduate so he can extend his Assisting Hand to those who need it.



FIRST RUNNER-UP:  
**Nimna M. Gabadage**  
(Gamma Rho/Florida State 2023)



SECOND RUNNER-UP:  
**Anthony H. Kedzierski**  
(Alpha Nu/Georgia Tech 2023)



## 2022/2023 Awards

**Distinguished Achievement Award**  
See page 11.

### Reginald E.F. Colley Award

Kyle R. Goodban (Gamma Phi/  
Nebraska Wesleyan 2023)

1ST RUNNER-UP: Nimna M. Gabadage  
(Gamma Rho/Florida State 2023)

2ND RUNNER-UP: Anthony H.  
Kedzierski (Alpha Nu/Georgia Tech 2023)

### James Ralph "Shug" Jordan Award

Sam Kelly (Gamma Phi/  
Nebraska Wesleyan 2024)

### Howard R. Alter, Jr. Award for Chapter Excellence

Alpha Sigma/Oregon  
Beta Sigma/Lehigh  
Epsilon Kappa/Idaho  
Iota Theta/Central Florida

### Grand Chapter Scholarship Award

Epsilon Kappa/Idaho

### James M. Holland Award

Gamma Rho/Florida State (80 initiates)

1ST RUNNER-UP: Delta Upsilon/  
Arizona State (72 initiates)

2ND RUNNER-UP: Alpha Phi/Alabama  
(63 initiates)

### Phil S. Randall Success in Recruitment Award

42 chapters initiated 25+ men

### Henry B. Hersey Significant Increase in Membership Award

Delta Upsilon/Arizona State  
(233% From 40 to 133 members)

HONORABLE MENTION:  
Omega/Penn State  
(129% From 17 to 39 members)





*Top recruiters: Gamma Rho/Florida State reviews their Holland and Randall awards.*



## 2022/2023 James Ralph “Shug” Jordan Award

**Sam Kelly** (Gamma Phi/Nebraska Wesleyan 2024)

Brother Kelly is a business sociology major at Nebraska Wesleyan with a cumulative 3.5 GPA. Concurrently, he is a member of the Alpha Kappa Delta Sociology Honors Society and served as the founder and president of NWU's Greenhouse Club. After he revitalized the greenhouse on campus and secured funds to purchase a new hydroponic watering system, the efforts at the NWU greenhouse evolved into a student organization that grows produce that is regularly donated to the campus food pantry.

He is Gamma Phi's Vice President, and previously served as Marshal and Brotherhood Chair. He earned the Fraternity's Resolute Man distinction while attending the Experience Track in Washington, D.C.

Kelly is a three-time varsity letter athlete and has served as team captain for two years. After suffering a radial head fracture in his elbow in 2020, he returned four months after his surgery to win the 200-yard freestyle at the American Rivers Conference Championship. During his sophomore year, he won the 200-yard butterfly and the 200-yard freestyle and, one year later, he was awarded ARC All-Conference First Team-200 IM, 400 IM, 400 Freestyle Relay, and the 200 Butterfly. He was also the ARC All-Conference Second Team-400 Medley Relay.



## Sidney Ann Gilpin Lewis Memorial Trophy

Alpha Xi/Delaware

Epsilon Phi/Central Missouri

Epsilon Psi/NJIT

Zeta Rho/Kentucky, Eta Beta/Eastern

Kentucky, and Eta Gamma/Morehead

Kappa Zeta/Arkansas

Lorne A. Adrain (Eta/Rhode Island 1976) and

James S. Buehler (Eta/Rhode Island 1977)

J. Michael Higgins (Tau/Florida 2023)

## Operation Military Red

USO SERVICE AWARD:

Delta Eta/Colorado State (1,745 hours)

USO FUNDRAISING AWARD:

Iota Theta/Central Florida (\$18,833.37)

## Most Improved Chapter

Beta Theta/Drexel



*Chapters were presented awards during this summer's sessions of the Initiative Academy held at the Alpha Iota Chapter house at Indiana University.*





John Berghoff

Dear Brothers,

The Legacy Society of Theta Chi is a collection of men who have a vision for a perfect brotherhood to grow and thrive. These brothers cherish their Theta Chi experience to a degree of selflessness, and they desire to see the values and friendships of this Fraternity live on forever. These men want to leave a Legacy for Theta Chi. Bill Suter (Beta Delta/Rutgers 1943) belongs to the Fraternity's Board of Visitors Lifetime Giving Level and established a planned gift with the Foundation Chapter more than 30 years ago. I met Brother Suter just before he turned 100 and he explained that his driver's license was still valid and that he continues to walk a mile each day after breakfast. This September, I stopped by for a visit and he, now 101, announced that he had just returned from 10 days of traveling the world. As excited as he is about telling me about his next upcoming adventure, he is equally excited to learn about how Theta Chi is doing. His lifelong passion and dedication to our brotherhood represent the best of our Legacy Society.

## There are a myriad of ways you can leave a legacy:

### **Bequest in a Will**

A bequest in a will can take the form of a set amount of money or percentage of an estate.

### **Tangible Personal Property**

Gifts of real estate, vehicles, artwork, possessions, etc. can make a great gift to our Fraternity.

### **Beneficiary and Life Income**

For an IRA, 401(k), and other retirement accounts, you can name the Foundation Chapter of Theta Chi as a beneficiary.

### **Gifts of Insurance**

If you have a life insurance policy that has outlasted its original purpose, consider making a gift of your policy.

### **Tax ID Information**

Foundation Chapter of Theta Chi

Tax ID: 21-4014559

It is critical that you list our legal name and tax ID as the beneficiary of your gift.

When the time is right for you to create or revise your estate plan, I encourage you to consider joining Brother Bill Suter and many others by leaving your legacy and including Theta Chi in those plans.

Fraternally,

*John M. Berghoff*  
John Berghoff  
Chief Development Officer



Theta Chi Legacy Society member  
Bill Suter (Beta Delta/Rutgers 1943)



# Theta Chi Honor Roll of Donors

Support for the Foundation Chapter is vital to the development of our brothers throughout North America.

Your gifts provide scholarships to collegiate and graduate students and fund many of our leadership education programs. This listing reflects gifts received between July 1, 2022, and June 30, 2023. Please join thousands of other Theta Chis in supporting our brothers by making a gift at [www.thetachi.org/give](http://www.thetachi.org/give). You can also mail a check with the envelope included in the center of this issue. Thank you for your Helping Hand!

## ALPHA

NORWICH

### Chase Council

Brig. Gen. Paul F.  
Kavanaugh (Ret.)

### Century Club

Donald E. De Blieux

## BETA

MIT

### Freeman Fellow

Gregory J. Wilson

### Century Club

Frank A. Ruiz

### Men Since '56

David S. Baumgartner

### Founders Club

Ryan M. Andrews

## GAMMA

MAINE

### Chairman's Council

Richard S. Doyon

James C. Otis

### Century Club

Jayson H. Bearce

Gary A. Henry

Steven Sargent

### Men Since '56

David A. Denis

Victor E. McGrath

Donald E. Stowell

### Snake & Sword

Frank W. Amadon, III

Col. Douglas W. Curtis, Jr.

Peter B. Derby

Paul T. Leonard

Dr. Mark C. Torres

### Heritage Club

Rev. Russell A. Newbert

## DELTA

TROY, NY

### Century Club

Gerald E. Duffy

John D. Haytaian

John J. Koziol

### Snake & Sword

David Ramonas, Jr.

## EPSILON

WPI

### Chairman's Council

Peter J. Mulvihill

### Chase Council

Paul Chodak, III

Joseph A. Gugliemino

John J. Marczewski

### Century Club

James A. Alfieri

Joseph A. Cappuccio

Stephen L. Goodwin

Dr. Allen H. Levesque

Norman J. Taupeka

### Men Since '56

Paul J. Landino

Jonathan H. Tucker

### Snake & Sword

Leigh H. Hickcox

### Founders Club

Ronald F. Baruzzi

## ZETA

NEW HAMPSHIRE

### Century Club

Scott A. Hopkins

Scott W. Lowe

### Men Since '56

Cliff E. Beidleman

### Snake & Sword

John R. Dulude

Joseph P. Orzechowski, IV

### Founders Club

David J. Chase

William Koromhas

Mark L. Rioux

### Heritage Club

Donald F. VanDenBerghe

## ETA

RHODE ISLAND

### Chase Council

Edward P. Foster

Thomas A. Pizza

### Century Club

Brian W. Campbell

### Snake & Sword

Col. Philip J. Saulnier (Ret.)

Stuart R. Dexter

## THETA

MASSACHUSETTS

### Freeman Fellow

Richard I.L. Partridge

### Chase Council

Robert F. Ferrara

### Century Club

Donald H. Baptiste, Jr.

Lee N. Goyette

Dr. Howard D. Stowe

### Men Since '56

Dr. Charles A. Correia

Gerald F. McAvoy

Michael C. Moschos

### Snake & Sword

R. Craig DeWallace

### Founders Club

Ronald L. Annand

## IOTA

COLGATE

### Chase Council

John Z. Hecker

### Century Club

James M. Hughes

### Men Since '56

David W. Herpy, Jr.

### Founders Club

Kyle M. Coven

### Heritage Club

Jonathan K. Smith

## KAPPA

PENNSYLVANIA

### Men Since '56

Gerald F. Metzheiser

## LAMBDA

CORNELL

### Century Club

Zacharias A. Kollias

Cal Organ

### Men Since '56

Dale S. Coats

William R. Lang

### Snake & Sword

Reginald Y. Haseltine

Peter H. Mitchell

## MU

CALIFORNIA

### Board of Visitors

George P. Lamb, III

### Chairman's Council

Matthew M. Ogburn

### Freeman Fellow

Loring A. Wyllie, Jr.

### Chase Council

Col. John F. Bouldry

Richard C. Otter

### Century Club

Melvyn P. Brodie

Mario Donati

David M. Walters

### Men Since '56

Matthew J. McCarthy

David A. Steiner

William D. Whisler

### Founders Club

Steve C. Marquez

## NU

HAMPDEN-SYDNEY

### Freeman Fellow

Daniel S. Kelly

### Century Club

Matthew M. Bloch

## XI

VIRGINIA

### Freeman Fellow

Steven J. Agosti, M.D.

### Chase Council

Dr. Richard E. Topping, Jr.

### Century Club

Michael E. Atwood

Gerald H. Barnes, CFA

James N. Garrett, Jr.

William C. Hamilton, II

James R. Hart

Joseph P. Renzetti

### Men Since '56

Laurence J. Burke

John A. Caldwell

Richard M. Cross

Charles A. White, III

Andrew W. Wright

### Snake & Sword

William M. Bickley

John R. Grespin

## OMICRON

RICHMOND

### Chase Council

Dr. John S. Prince, Jr.

### Century Club

Charles F. Benjamin

John G. Cosby, Jr.

Thomas L. Fendley

James B. Frith, Jr.

### Snake & Sword

Richard C. Nagle

## PI

DICKINSON

### Century Club

James E. Goens

Anthony F. Kern

Robert A. Mairone

### Men Since '56

Lt. Rocco A. Falvello

Harold M. Shaw, III

Rev. William Sherman, Jr.

Lt. Col. William Waterman

## RHO

ILLINOIS

### Chairman's Council

William A. Frey, III

Thomas N. Thompson

### Chase Council

James L. Munson

Henry F. Pierce, Jr.

### Century Club

Jason V. Bauer

Richard M. Franks

James J. Kelly, Jr.

C. Drew Kofahl

Gordon E. Moskal

### Men Since '56

Kevin W. Baldwin

G. Grant Weichbrodt

### Snake & Sword

David J. Winter

### Heritage Club

Justin P. Miner

## SIGMA

OREGON STATE

### Benefactor Club

Kenneth W. Johnson

Gilbert N. Miller

### Board of Visitors

Peter A. Nelson

Gordon C. Root

### Chairman's Council

Steve D. Daniels

Jeffery P. Hough

## LIFETIME GIVING LEVELS

(LEVEL INDICATES  
LIFETIME GIVING TOTAL)

### Presidents Circle

\$250,000+

### Leadership Club

\$100,000–\$249,999

### Benefactor Club

\$50,000–\$99,999

### Board of Visitors

\$25,000–\$49,999

### Chairman's Council

\$10,000–\$24,999

### Freeman Fellow

\$5,000–\$9,999

### Chase Council

\$2,500–\$4,999

### Century Club

\$1,000–\$2,499

### Men Since '56

\$500–\$999

### Snake & Sword

\$250–\$499

### Founders Club

\$100–\$249

### Heritage Club

\$99 and below

David G. Roberts

Eric S. Winquist

### Century Club

Dr. James G. Bradsher

Stephen B. Jolley

Dwight J. Matson

Robert W. McCormick

### Men Since '56

Greg P. Jacob

Michael R. Lee

Richard Y. O'Shea

## TAU

FLORIDA

### Chairman's Council

J. Bruce Hoffmann

### Freeman Fellow



## Chase Council

Dr. Craig S. Kluger  
Thomas L. Miller

## Century Club

Michael H. Davidson  
Joseph E. Gazdak  
Manuel A. Gurdian  
J. Gary Hoopes  
Thomas N. Richardson  
William A. Ross, III  
Richard J. Snyder

## Men Since '56

John A. Park  
Clyde J. Pittman  
Cmdr. Charles G. Sauls

## Snake & Sword

Thomas C. Freeberg  
Thomas J. Gelli  
Joseph P. Jolley  
Francis G. Spera  
Arnold E. Zissman

## Founders Club

Louis B. Lerman

## Heritage Club

Robert R. Wheeler, Jr.

## UPSILON

NYU

## Freeman Fellow

F. Barry Nelson

## Century Club

Thomas G. Angelo

## Men Since '56

Vincent L. Cappadocia  
Hon. Joseph G. Golia

## PHI

NORTH DAKOTA STATE

## Chairman's Council

Dr. James D. Hardwick

## Freeman Fellow

Dennis J. Vonasek

## Chase Council

Douglas B. Johnson

## Century Club

Kyle R. Blake  
Jon K. Dickson  
Brian N. Fedje  
Darin R. Fossum  
Kelly J. Linster  
Cory C. Loveless  
Gary L. Rosevold  
Lt. Col. Darrell I. Tuntland

## Men Since '56

Kim M. Colwell  
Brett R. Garske  
Roger E. Gjellstad  
Brian A. Hankel  
Dean R. Kelsch  
David C. Miller

## Snake & Sword

Derek J. Hatzenbuehler  
Craig E. Johnson  
Brian M. Riches  
Michael L. Tobias

## Founders Club

Joseph D. Antonoplos  
Alan D. Edwardson  
Jason A. Link  
Eric C. Mogen  
Bradley H. Rutten  
Jerry W. Specht  
Richard L. Stradling

## Heritage Club

Tyler J. Blegen  
Aaron A. Boe  
Brandon L. Davis  
Jadon M. Draeger  
Dwight M. Evers  
Jacob A. Freed  
Jaison A. Freed  
Charles N. Gonderinger  
Joseph R. Haubrick  
Tyler V. Holland  
John W. Lynch  
Koby L. Marchus  
Alexander D. Meyer  
Robert A. Neubauer  
Mark J. Puppe  
Tyler T. Specht  
Nicholas G. Wright

## CHI

AUBURN

## Benefactor Club

Patrick T. O'Connor

## Chairman's Council

Joseph S. Couch

## Freeman Fellow

Daniel T. O'Connor  
James F. Turner, Jr.

## Chase Council

Dr. Thomas S. Achey  
Robert J. Kloeti  
Robert L. Mann  
Dr. David O. Parrish

## Century Club

Gerald L. Hackler  
Timothy J. Lockhart  
Phillip A. McPhail  
L. Noel Moore  
Neima K. Tavakoli

## Men Since '56

Carson S. Webb

## Snake & Sword

Joseph C. Borden  
Charles B. Boyd  
William J. Toothaker

## Founders Club

Robert C. Hicks  
Steven K. Sawyer

## PSI

WISCONSIN

## Freeman Fellow

William R. Schuetze  
Michael T. Weiss

## Chase Council

John F. Kluth

## Century Club

Thomas L. Bruckner

Daniel F. Creasey

Christopher W. LaRowe

John E. Munnik

Ralph O. Zahnow

## OMEGA

PENN STATE

## Freeman Fellow

James C. Stalder

## Chase Council

Robert B. Tucker

## Century Club

George E. Hoffman, Jr.  
Lamar E. Rohrbach  
Dr. Paul E. Vassil  
John N. Weiss, Jr.  
Dr. Robert V. Zedelis

## Men Since '56

Edward M. Beidel, Jr.  
Robert A. Hoffman  
Richard R. Jones  
Richard B. Maltz  
Kurt P. Rohrbach

## Snake & Sword

Robert F. Mausser

## Founders Club

Ronald Beadenkopf  
Michael R. Hetrick

## Heritage Club

Eric T. Forner

## ALPHA BETA

PITTSBURGH

## Century Club

Dr. T. John Kuehn, III

## Men Since '56

Valer V. Secarea, Jr.

## Founders Club

William H. Means

## Heritage Club

James Kremus

## ALPHA GAMMA

MICHIGAN

## Chairman's Council

Anthony L. Paalz, Jr.

## Chase Council

Dr. William R. Rude

## Century Club

Thomas G. Bobowski  
Dr. James E. Dickson, II  
Darrell E. Finken  
Bill Grover  
Brian R. Kotzian  
Geoffrey S. Larcom  
Gregory A. McKenzie

## Men Since '56

Samuel L. Spar

## Snake & Sword

Zachary H. Spar

## Founders Club

Benjamin J. Reyes

## ALPHA DELTA

PURDUE

## Chairman's Council

Richard P. Moran

## Freeman Fellow

James J. Abel  
Michael R. Berghoff  
Justin F. Brown  
Scot A. Clark  
Dr. Steven J. Hanna  
William R. Snyder

## Chase Council

James M. Durkin  
Vance J. Hinton  
Jeffrey J. Kucer  
Edward A. Milbrandt  
James E. Nowicki  
James W. Ross, Jr.  
James V. Tomochek

## Century Club

John M. Berghoff  
John V. Blagrove  
James K. Britt  
David G. Buffington  
James M. Cox  
Gary L. Dominy  
Jacob A. Faulk  
David J. Hatcher  
David A. Lach  
Walter P. Linne  
C. Patrick McGriff  
Steven P. Osborn  
William P. Przybylski  
Brian K. Schuman  
Mark J. Thomas  
Jeffrey S. Zink  
Paul D. Znika

## Men Since '56

Coleman L. Bennett  
Robert G. Bridges  
Robert B. Charles  
Daniel J. Clark  
Robert J. Dixon  
Stephen M. Fettes  
John M. Howell  
Thomas W. Kiesler  
Daniel J. Layman  
Michael J. Magin  
Hon. Thomas A. Massey  
James E. Mayberry  
Peter M. Picucci  
Michael A. Plaster  
James F. Raffin  
Michael L. Rushing  
Donald C. Sargent  
Randolph P. Truitt

## Snake & Sword

Dr. Jeffrey R. Durkin  
Kenneth W. Horn  
Kevin J. Kultgen  
Robert T. Lekowski  
Kevin B. McMahon  
Richard P. McNamar  
John W. Mybeck  
Charles E. Naab, Jr.  
Ronald R. Picking  
Ryan R. Smith  
Jeffrey A. Tudas  
Luke T. Uhrig  
Craig O. Wellnitz

## Founders Club

Robert G. Bernard  
Caley T. Coughlan  
Thomas J. Darby  
Kevin P. Donahue  
Steven R. Fero  
Kyle M. Hess  
Erik E. Kesteloot  
Todd M. Kuipers  
Vincent J. McMahon  
Timothy E. Miller  
John L. O'Reilly  
Jeffery B. Robbins  
D. Randy Royer  
Christopher G. Schmidt  
Kris A. Smith  
Nathan A. Turner

## Heritage Club

Evan M. Berghoff  
James S. Landers  
Mark A. Zerr

## ALPHA EPSILON

STANFORD

## Century Club

Alexander M. Nicholson, Jr.

## Snake & Sword

Jonathan W. Wilbor

## ALPHA ZETA

ROCHESTER

## Freeman Fellow

Martin D. Rabinowitz

## Chase Council

Dr. Kenneth A. Hubel

## Century Club

Donald A. Parry  
Mark W. Taft

## Men Since '56

Dr. Gerald D. Hagin  
John R. Luckner  
Leonard J. Star

## Snake & Sword

Steven A. Rothschild

## ALPHA ETA

NORTH CAROLINA

## Chase Council

Scott E. Cabaniss

## Century Club

James W. Summey, III

## ALPHA IOTA

INDIANA

## Board of Visitors

Warren E. Hoffman, II  
Richard L. Shirley, Jr.

## Freeman Fellow

Philip R. Holdread  
Tom Vander Luitgaren  
Derek S. Roudebush

## Chase Council

Bryan M. Alig  
Richard M. Buskirk  
Jack C. Francis, Ph.D.  
Roger K. Long  
Michael O. Thornburg

## Century Club

Matthew T. Coffman  
Norm A. Hagman, M.D.  
Nicholas G. Hoke  
Gregory A. Imboden  
Donald H. McGivern  
Capt. Gordon E. Miscoi  
Earl Nolting, Ph.D.  
Dr. Frederick E. Robbins  
Richard D. Sanders  
Mark A. Sayers  
Harry G. Schoger, Jr.  
Col. Michael A. Smith  
James W. Talbert  
Raymond W. Vanlanot, II

## Men Since '56

Dennis M. Baltimore  
Gene S. Nesbit, Jr.  
Robert C. Pollock  
Richard Schumacher, M.D.  
Charles F. Taylor

## Snake & Sword

Jason A. Gnagy  
John D. Wargel  
John J. Beaumont

## Founders Club

Jason K. Barnes

## ALPHA KAPPA

WEST VIRGINIA

## Freeman Fellow

Michael N. Farah  
David W. Horner

## Century Club

Leon E. Pilewski  
Paul C. Sirney  
William G. Volkman  
William R. Werner  
Robert W. Trenor

## Men Since '56

Tony J. Marchio

## Snake & Sword

William F. Miller

## Founders Club

Daniel R. Chalfant

## ALPHA LAMBDA

OHIO STATE

## Chase Council

Lawrence C. Berger  
Greg L. Spatz

## Century Club

Hugh E. Bonnoront  
Craig L. Franz  
Thomas G. Mosher  
Col. Roger F. Wickert (Ret.)

## Men Since '56

Robert G. Snyder  
Donald R. Williams  
Paul E. Goebel

## ALPHA MU

IOWA STATE

## Freeman Fellow

David G. Rush  
David M. Svingen  
Larry S. Buss



**Century Club**

Mark E. Steward, Jr.

**Men Since '56**

Brandon J. Cutler  
Wade R. Lancaster  
Timothy B. Schwering

**Snake and Sword**

Brian T. Clark

**ALPHA NU**

GEORGIA TECH

**Freeman Fellow**

Dwight D. Delgado

**Chase Council**

Peter J. Johns  
Robert W. Lee  
Richard K. McCrea

**Century Club**

Paul N. Clemmons  
William H. Denney, Jr.  
Col. Roy V. Fair (Ret.)  
Ronald C. Gaughf  
F. Turner Plunkett  
Charles O. Rawlins  
Devin A. Scott  
Arthur G. Springer, III  
A. Thomas White, Jr.

**Men Since '56**

Jack K. Bailey, Jr.  
John C. Cattaneo  
C. Harris Johnson  
John K. Kalter  
Jeffrey P. Schick

**Snake & Sword**

Gary T. Reed

**ALPHA XI**

DELAWARE

**Century Club**

Adam B. Lowy  
Michael A. Potter

**Men Since '56**

Albert D. Brown  
Christopher R. Homan  
Raymond M. Krett, Jr.

**Founders Club**

David E. Conner  
Robert H. Thomson, Jr.

**ALPHA OMICRON**

WASHINGTON STATE

**Chase Council**

Kelly W. Hintz

**Century Club**

Dr. Brian L. Benzel  
Michael W. Coleman  
Donald E. Dunbar  
Andrew A. Ellis  
Dr. John T. Griffith  
James A. Guess  
Steven R. Ingram  
Col. Dennis Kullander (Ret.)

**Men Since '56**

Michael S. Conklin  
Joseph D. Grim  
Miller D. Lembke  
Robert E. Wheaton

**ALPHA PI**

MINNESOTA

**Board of Visitors**

Paul R. Norstrom

**Chairman's Council**

Creig L. Andreasen

**Freeman Fellow**

Thomas H. Swain

**Chase Council**

Kelly R. Dunn

**Century Club**

Steven J. Gehrke  
Carl D. Peterson

**Men Since '56**

Alexander P. Draskovich

**Snake & Sword**

David B. Freid  
Carlos A. Landry

**ALPHA RHO**

WASHINGTON

**Century Club**

Jack V. Denton

**Snake & Sword**

Thomas G. Leduc

**Heritage Club**

Gavin C. Lake

**ALPHA SIGMA**

OREGON

**Chase Council**

Steven R. Bennett

**Century Club**

James A. Hamilton

**Men Since '56**

Keith A. Huffstutter  
Leo L. Naapi  
H. Donald Ulrich

**Founders Club**

Trey M. Cornish

**ALPHA TAU**

OHIO

**Chairman's Council**

Art Krasilovsky

**Freeman Fellow**

J. Jeffrey Smead

**Chase Council**

Thomas E. McNamara  
Wayne W. Wilson

**Century Club**

Jeffrey B. Roberts  
Michael H. Kugel  
Patrick E. Smith

**Men Since '56**

Jerry B. Beck  
Steven C. Leist  
Eugene J. Kohn

**Snake & Sword**

Geoffrey T. Penney  
James L. Schuttenberg

**Founders Club**

Paul A. Cartellone  
Tim R. Massey, III  
Robert L. Seman

**ALPHA UPSILON**

NEBRASKA

**Benefactor Club**

Michael D. Roe

**Freeman Fellow**

Eric W. Raasch

**Chase Council**

Jeffrey L. Jorgensen  
Fred J. Otradovsky

**Century Club**

Raymond N. Ashmun  
Chad W. Ellsworth  
Charlee M. Garst  
Martin E. Neal  
Dr. Donald B. Schewe  
Lt. Col. Martin Stokes (Ret.)

**Snake & Sword**

Ronny L. Legino  
Keith A. Prettyman  
Dr. John F. Tedesco

**ALPHA PHI**

ALABAMA

**Board of Visitors**

Kirby V. Montgomery

**Chairman's Council**

Peter S. Mackey  
Marvin L. McConaghy  
Tobin B. Roth  
Wesley K. Wicker, Ed.D.

**Freeman Fellow**

Capt. Lucas T. Elgie  
George C. Garikes  
John E. Hagefstration, Jr.  
Dale Taylor

**Chase Council**

Brig. Gen. Roland E.  
Ballow (Ret.)  
C. Benton Burroughs, Jr.

Peter N. Derzis, Jr.

Fulton S. Hamilton

Patrick P. Hughes

James W. Oakley, Jr.

**Century Club**

Thomas K. Keller, Sr.  
Thomas L. Renick

**Men Since '56**

Dr. Ronald L. Cox  
Michael A. Crabb, III  
Samuel P. Givhan  
Jackson D. King  
Terry N. Lewis  
Joseph G. Musick  
**Snake & Sword**  
Col. Duane A. Lamb (Ret.)  
Steven G. Woodward

**Founders Club**

John G. Tucker  
Oren D. Wool

**ALPHA CHI**

SYRACUSE

**Chase Council**

Thomas M. Kenyon  
Dennis W. Morgan

**Century Club**

Kevan R. Emmott  
Terry P. Grummitt  
Bruce M. Kehler  
Daniel S. Martindale  
Robert S. Moses  
**Men Since '56**  
Douglas I. Cotler, D.V.M.  
John S. Durand  
Dennis M. McManus

**Snake & Sword**

Robert M. Boris  
Andrew Lau  
Douglas L. Payne  
Joseph I. Peck  
Jonathan H. Zeidman

**Founders Club**

James W. Clute  
Justin A. Laughlin  
Andrew T. Morba  
Glenn Shivers  
Paul C. Vowinkel

**ALPHA PSI**

MARYLAND

**Freeman Fellow**

Joseph C. Jensen

**Chase Council**

Patrick M. Cox  
David A. Glunt  
Robert L. Hopkins  
Stephen J. O'Connell

**Century Club**

B. George Ballman  
John K. Gardner  
Thomas J. Gardner  
Charles L. Morton

**Snake & Sword**

John N. DeRosa  
Jonathan E. McHugh

**Founders Club**

Michael S. Chismar  
Carl F. Kuhne, Jr.

**Heritage Club**

Jeffery B. McConaghy

**ALPHA OMEGA**

LAFAYETTE

**Board of Visitors**

Stephen J. Macri

**Freeman Fellow**

Richard F. Engel  
John R. Harrington

**Chase Council**

Ralph E. Bothe  
Edward D. Wetzel

**Century Club**

Stephen R. Brainard  
Calvin K. Flury, Jr.  
Gary N. Gildersleeve  
Robert W. McCluskey  
Lt. Michael R. Nester  
Paul G. Tuttle

**Men Since '56**

Kevin J. Doyle  
Lt. Col. Frank J. Kohout  
David M. Little  
John G. Thomas, III

**Snake & Sword**

Thomas W. Clegg, III  
Dr. Michael J. Glick

**Founders Club**

Edward K. March

**BETA ALPHA**

UCLA

**Freeman Fellow**

James W. Baker  
Dr. Bruce E. Gelb

Paul L. Poitras

**Chase Council**

Stephen M. Baker  
James C. Sun, Esq.

**Century Club**

Robert E. Hird  
Dr. Michael P. Lafkas  
Christopher R. Pomeroy  
Dr. Peter J. Vasquez  
Neal P. Weichel  
Michael D. Weinstein

**Men Since '56**

Dr. Thomas M. McCoy  
Ihab F. Shahawi  
John C. Stoessel  
Lt. Cmdr. Louis Toth (Ret.)

**Snake & Sword**

George F. MacPherson

**Founders Club**

William Roeschlein

**BETA GAMMA**

NORTH DAKOTA

**Men Since '56**

Peter J. Stratton

**Heritage Club**

Lee E. Kieley

**BETA DELTA**

RUTGERS

**Board of Visitors**

William H. Suter

**Chase Council**

Sanford A. Goldstein

**Century Club**

David J. Boczar  
Gary A. Carmichael  
Harry J. Herrmann  
Robert D. Leonhard, Jr.  
Glenn L. Long

**BETA EPSILON**

MONTANA

**Century Club**

Gary A. Carmichael

**Men Since '56**

Louis Dudas  
Douglas D. Jones  
George L. Sherwood  
Lowell A. Tripp

**BETA ZETA**

MICHIGAN STATE

**Board of Visitors**

David L. Westol

**Chase Council**

J. Tyler Damon, II  
Lt. Col. Mark Ratliff (Ret.)  
Gary C. Steinhardt

**Century Club**

James S. Smith  
Joseph C. Wolfe

**Men Since '56**

John W. Poyhonen, Jr.

**Snake & Sword**

Thomas P. Sheridan

**BETA ETA**

WASHINGTON (MD)

**Century Club**

Christopher J. Mocella  
Dominic M. Romano

**Snake & Sword**

James W. Lewis

**BETA THETA**

DREXEL

**Chairman's Council**

Byron C. Vielehr

**Chase Council**

Howard B. Cates, III

**Century Club**

Gary S. Colton  
Daniel M. DiDomenico, III  
Frank I. Hinchcliffe

**Men Since '56**

Peter E. Pisasale

**BETA IOTA**

ARIZONA

**Chairman's Council**

Dr. Kia Sepassi

**Men Since '56**

Clifford V. Coddington

**Founders Club**

Christian Z. Reed

**Heritage Club**

Matthew Gillis

**BETA KAPPA**

HAMLINE

**Freeman Fellow**

Cory D. Olson

**Century Club**

John R. Bunde  
Benjamin J. Zurn

**Men Since '56**

Matthew R. Glocke  
Ronald C. Roberts

**Snake & Sword**

James D. Bailey  
John R. Hultquist

**Founders Club**

Scott C. Jaberg  
Michael B. O'Boyle



## BETA LAMBDA

AKRON

### Presidents Circle

William R. Dahlgren

### Freeman Fellow

Christopher N. Conley

### Century Club

William K. Bamler

Hon. James D. Ford

### Men Since '56

James R. Fresch

Daniel R. Wise

### SNAKE & SWORD

Edwin Dieringer

David R. Wobser

### Heritage Club

Tony Abou-Elias

## BETA NU

CASE WESTERN

### Chairman's Council

Dale A. Pulver

### Freeman Fellow

Mark A. Kikta

Edwin M. Salkeld, Jr.

### Chase Council

Richard R. Cook, Jr.

William D. Dickinson

Lt. Cmdr. James Gentry, Jr.

### Century Club

Louis L. Campbell

Matthew S. Davis

Thomas F. Dohnal

Neeraj J. Edward

Charles A. Green

Marvin McGowan, D.O.

Kenneth N. Ross

### Men Since '56

Manna D. Case, IV

### SNAKE & SWORD

Michael E. McHenry

Bernard L. Newman

Gordon E. Rutzen

### Founders Club

John K. Cleaver

## BETA XI

BIRMINGHAM-SOUTHERN

### Chairman's Council

Michael J.S. Pastrick

### Freeman Fellow

Nikolai Makarenko, Jr.

### Century Club

Jonathan R. Boydstun

Dr. J. Eugene Lammers

Brian M. Menke

Joseph M. Saloom

### Heritage Club

Thomas L. Porter

## BETA OMICRON

CINCINNATI

### Freeman Fellow

Donald A. Leckrone

### Chase Council

Jeffrey L. Bachmann

Dennis Demoss

Robert J. Pfaffenberger

Alan W. Shinn

### Century Club

Kent V. Attwell

Steven M. Hirsch

Robert M. McLaughlin

Gordon A. Queen

Stuart W. Small

### Men Since '56

Frank G. Coyle

Carl G. Hartman

Jon D. Parsons

Ronald H. Saemann

John C. Smith

Rodger L. Tate

### SNAKE & SWORD

Ian T. Owens

### Founders Club

Michael H. Eastman

Robert C. Stricker, Jr.

William E. Wyatt, Jr.

### Heritage Club

Michael T. Lisowski

## BETA PI

MONMOUTH

### Chase Council

Richard E. Yahnke

### Century Club

Michael F. Hoyt

### Men Since '56

Dr. Gregory I. Derbak

Jerry L. Greer

### SNAKE & SWORD

Dennis E. Walker

## BETA RHO

ILLINOIS WESLEYAN

### Board of Visitors

Howard A. Doss

### Chairman's Council

Peter C. Cappas

### Chase Council

Harry H. Chapman, III

Edward C. McKenna

Douglas E. Troutman

### Century Club

Thomas C. Cawley

J. Chris Jackson

Walter R. Sitz

Horace B. Tomlin

### Men Since '56

James S. Dunn

Stuart D. Hines, Jr.

### SNAKE & SWORD

Frederick H. Lindner

Dr. Jon B. Suzuki

### Founders Club

Craig R. Altman

## BETA SIGMA

LEHIGH

### Chairman's Council

David B. Foltz

### Freeman Fellow

Charles L. Cucullu, Jr.

Frank R. Scheid, Jr.

### Chase Council

Laurence P. Engel

Paul C. McBeth, III

James V. Morabito

Edwin M. Undercuffler

Neil W. Volant

### Century Club

Scott D. Burghoff

Gary Tilles

Kurt S. Wiesner

### Men Since '56

Charles A. Denault

P. Wayne Frey

Benjamin D. Rodney

Donald W. Stever, Jr.

### SNAKE & SWORD

Stephen W. Saunders

Nathaniel W. Soron

### Heritage Club

Dylan H. Alexander

Joseph L. Amitrano

Filip P. Barun

Humza Bengali

Lucas Bennett

Tobey E. Bill

Jacob A. Boyd

Turner P. Brown

Mason F. Bursac

Brian Cronk

Michael T. Cyran

Alexander C. Davis

John R. Duchossois, III

Ziyad Elsabbagh

Robert Erickson

Elijah Feit

Dylan Fern

Russell Fisher

Owen Fitz

Avery Fitz

James Gilman

Jonah Gross

Jacob A. Herman

Will Kelly

Wesley E. Kirin

Christopher A. Krein

Peyton Levine

Thomas P. McDonnell, III

Samuel H. Miller

Braden B. Mills

Cooper Nelson

Jacob B. Nelson

Wesley D. Patel

Theodore Polk

Henry A. Price

Ori Remen

Michael B. Rich

Thomas K. Richardson

Ryan Sabol

Blake Sanders

Matthew S. Schneiderman

William J. Schoen

Daniel Smullen

Christopher Soule

Michael Speckhart

Ethan Stine

Jason C. Tinney

Sean S. Upadhyay

Jason Wehran

Thomas R. Weinstock

Alexander Weissman

Bryce Winters

Kevin S. Yang

Alan Zhou

## BETA TAU

SOUTHERN CALIFORNIA

### Freeman Fellow

Jingwei Lei

Jiro Sakamoto

### Chase Council

John M. Brock

Wallace D. Mersereau

### Century Club

Richard D. Finken

## BETA UPSILON

FRESNO STATE

### Freeman Fellow

Thomas E. McCormick, III

### Chase Council

David R. Baxter

### Century Club

Bruce C. Paltenghi

Kevin A. Pendergrass

### SNAKE & SWORD

Michael B. Cuttione

## BETA PHI

NEVADA

### Century Club

David W. Lowe, Jr.

James T. Wright

### SNAKE & SWORD

Harvey W. Lambert

## BETA CHI

ALLEGHENY

### Benefactor Club

Dr. Philip P. Pappas, II

### Freeman Fellow

John P. Lydon

William R. Wilson

### Century Club

Carl B. Clark

Mark G. Clarke, M.D.

Frederick J. Cullen

Bruce W. Cushman

Martin L. Goldman

Dale H. Meyers

Paul A. Rockar, Jr.

Richard C. Polley

### Men Since '56

Jack L. Snitzer

Joel W. Swanson

### SNAKE & SWORD

Mark A. Tabbert

### Founders Club

Ben L. Swanson

## BETA PSI

PRESBYTERIAN

### Chairman's Council

James S. McEachern, III

### Chase Council

John S. Inman

Michael G. LeFever

Shickre A. Sabbagha

Dr. John M. Stephenson

### Century Club

Ronald H. Colvin

Alan L. Davis

M. Ronald McMahan, Jr.

### Men Since '56

Ellis W. Mills, III

### SNAKE & SWORD

Timothy C. Williams

## BETA OMEGA

SUSQUEHANNA

### Freeman Fellow

Jack E. Cisney

### Chase Council

Edward R. Schmidt

### Century Club

Kenneth C. Gift

### Men Since '56

D. Ward Plummer, Jr.

### SNAKE & SWORD

Timothy C. Williams

## GAMMA DELTA

FLORIDA SOUTHERN

### Century Club

James A. Falconer

### Men Since '56

Robert A. Brown

William M. Gainer

### Heritage Club

## **GAMMA MU**

BOWLING GREEN

### **Chase Council**

J. Kevin Telepe  
Lee J. Van Syckle  
Sean L. Williams

### **Century Club**

Richard D. Feil, Jr.  
Gilbert G. Koch  
John G. Rich  
Richard E. Wallace

### **Men Since '56**

Robert E. Rutan

### **Snake & Sword**

James W. Harty

## **GAMMA NU**

NEW MEXICO STATE

### **Freeman Fellow**

Jay T. Olson

### **Chase Council**

David J. Nishioka

### **Founders Club**

Michael W. Perkins  
Charles E. Read  
Richard C. Wilson

## **GAMMA XI**

SAN JOSE STATE

### **Chairman's Council**

Richard C. Sanders  
Alan K. Saunders

### **Freeman Fellow**

Micah N. Harrel

### **Chase Council**

John W. Davis  
Steven M. Pyle  
Marty G. Schaefer  
William R. Shivel

### **Century Club**

Bruce W. Brown  
Lt. Col. Donald Curry (Ret.)  
Ronald J. Henares  
Robert A. Huber  
Scott W. Milliken, D.D.S.

### **Snake & Sword**

Sanford S. Fish  
Steve Owyong  
Gary L. Ransom

### **Founders Club**

Daniel A. Garcia

### **Heritage Club**

Trevor P. Nemanic  
Danny D. Phan

## **GAMMA OMICRON**

WAKE FOREST

### **Chase Council**

Bradley N. Schulz

### **Century Club**

Stephen W. Christian  
Jeffrey S. Nelson  
Randolph B. Screen  
John H. Weierman

### **Men Since '56**

Wade B. Haubert Sr.

## **Snake & Sword**

C. Irvin Grigg  
Steven C. Holladay

### **Heritage Club**

Dr. Larry L. Hurst

## **GAMMA PI**

BUFFALO

### **Chairman's Council**

Keith M. Feuz

### **Freeman Fellow**

Elliot S. Rose

### **Century Club**

Jeffrey S. Kenyon  
William R. Klocko  
Barry A. Ransom

William W. Walluk

### **Men Since '56**

Kenneth J. Munro, Jr.  
TJ Latona

Dr. George Quintero

Kenneth P. Schirmuhly

### **Snake & Sword**

William D. Brucker  
Dr. David M. Civilette  
Gary T. Urquhart

## **GAMMA RHO**

FLORIDA STATE

### **Presidents Circle**

Bob Sasser

### **Board of Visitors**

Mark Hillis  
Steven J. Mudder

### **Chairman's Council**

Capt. Donald H. Ramsden

### **Freeman Fellow**

Dale W. Carlson  
George A. Turnbull

### **Chase Council**

Dr. James A. Black  
George L. Radford  
Andrew Rubinacci  
Albert C. Voll

### **Century Club**

William R. Abstein, II  
J. Joseph Bailey  
Mark E. Diaz  
Bruce L. Dunn  
J. Thomas Ellicott, Jr.  
Lewis J. Friedrichsen, Jr.  
Ross Gagliano  
Phillip A. Greenman  
Allen W. Hallas  
Dale J. Knapp  
Scott A. McLuckie  
Joseph F. Monroe  
John B. Murphy  
Robert D. Schleif  
William Suarez

### **Men Since '56**

Gregory H. Abdalla  
Christopher M. Brewer  
Douglas A. Bryant  
George E. Burkhart, Jr.  
Brian J. Condo

Joseph C. Cooper  
Clifton C. Curry, Jr.  
Lt. Col. Walter O. Fisher, Jr.

George W. Frison  
Joseph A. Garner  
Anthony J. Gill  
Sean P. Higbee  
John A. Ingani  
Burns M. Lowry, Jr.  
Corey B. Mann  
Michael Mitchell  
Russ B. Morgan  
Kenneth R. Snyder  
Joseph J. Sowinski, Jr.

### **Snake & Sword**

Keith A. Ashley  
Travis D. Bird, Esq.  
Bradley S. Bridges  
Brian J. Coan  
Matthew H. Ditslear  
Shawn P. Eastman  
Steven S. Eichenblatt  
Mark S. Eisner  
Brian P. Finnegan  
James K. Griffis, Sr.  
William F. Jacchia, II  
Robert H. Johnson  
Charles W. Lee  
Gregory Murphins  
T. Corey Neil  
Derrick J. Rivera  
Richard W. Roberts  
Steven Roogow  
William A. Schack  
Corey Smith  
Jeffrey B. Verkon  
Mike A. Vivas  
D. Eugene Walden, III  
Jeff P. Wilke  
Hamlet P. Yousef  
Eric S. Zwygart

### **Founders Club**

Travis J. Adams  
Juan G. Andreu  
John A. Brown  
Mark A. Coleman  
Michael J. Cronin  
Andrew C. Curtis  
Richard J. Erwin  
Michael F. Forslund  
Bob Gosselin  
Jeffrey A. Hausinger  
Daniel A. Kellenberger, IV  
John B. Krissel  
Matthew D. Kowal  
Emiliano Pantner  
John O. Raudenbush  
Jared Repassy  
Kenneth P. Russ  
Henry T. Sorensen  
Eric Swanson  
Nicholas D. Techera  
Dustin A. Tomlinson  
William A. Walden

## **Heritage Club**

Logan A. Abney  
Jeff Adams  
Joshua B. Armstrong  
John Austin  
Matthew Balsera  
Jean-Marc J. Becsey  
Mateus Bitencourt  
Donte J. Bristol  
Carson Brooks  
Ethan Brooks  
Marcus A. Callegari  
Connor Case  
Matteo A. Catena  
Michael R. Cernkovic  
Sebastian C. Monteverde  
Quinn Clair  
Justin Clark  
Carrie Clingan  
Aiden V. Collier  
Lucas A. Consuegra  
R. Stephen Coonrod  
Christopher D. Cordon  
Reilly Craig  
Emon Darakhshan  
Alyjah Dauda  
Cooper Dearborn  
William DiMisa  
Connor Dries  
Trent T. Drury  
Ethan Dumer  
Ethan Eastman  
Dayne Edwards  
Elio I. Eichelbaum  
Spencer R. Epps  
Jagger M. Fels  
Lucas J. Fernandez  
Luke F. Fields  
Everette J. Flora  
Wilson A. Fraley  
Davis Foody  
Ryan Garrett  
Harrison Gault  
Ian Girard  
Jaden Golston  
Harold A. Greenman  
Jake Greifelt  
William Griffin  
Christophe Grzep, III  
Gabriel Guerra  
Davis T. Hanley  
Blake S. Heyer  
Jake Hood  
Leighton J. Hyde  
Maxwell Houser  
Nicholas A. Ivonnet  
Jack Jafet  
Christopher Jeffords  
Carson M. Kane  
Patrick Keenan  
Alexander Kempton  
Tyler G. Knight  
Ross M. Landt  
Jacob H. Lefton  
Maximino M. Lich  
Payne Lipton  
Yili Liu

Jackson Llewellyn  
Nicholas M. Lopes  
Cameron Lynch  
Aidan MacFarquahar  
Kevin Madley  
Guillermo Marr  
Derek Marra  
Jacob Marrero  
Aidan M. McCarty  
Dennon R. Mills  
Jake A. Misseldine  
Jason Morrow  
Brendan Myers  
Jacob G. Nance  
James L. Napier  
Cody Nelson  
Dylan Nelson  
Logan Nelson  
Scott Newell  
Dylan O'Connor  
Jack Olsen  
Andres M. Ortiz Rodriguez  
Chase Orzel  
Andres Pacios  
Christian Padgett  
Chris R. Paniello  
Chris Pavlakis  
Jake Penta  
Mateo N. Perez-Barrero  
Oliver Petrillo  
Josh Pollard  
Adrian Quintero  
Nicholas M. Ramsden  
Bennett C. Rash  
Matthew D. Rey, Jr.  
Nicholas M. Rhoades  
Ryan A. Rizo  
Brandon Robertson  
Peter C. Rowden  
Michael Sabatello  
Emory Sanderson  
Joseph G. Scalogna  
Jack Simonsen  
Andrew Sonderegger  
Deandre Stanley  
Seth N. Stark  
Ayden B. Sturza  
Kevin Stenger  
Cristian Suarez  
Marco Suarez  
Marcos A. Tejera  
Joshua I. Thomas  
Jay C. Thomason  
Matthew W. Touchstone  
Daniel Underwood  
Adam Utter  
Gabriel A. Valladares-Ruiz  
James Viard  
Brady Walden  
Nicolas R. Walker  
Coleman Weller  
Zachary M. Weston  
Sean R. Wolfington  
Brian N. Yablunsky  
Christian Yatsula  
Aidan Yount

## **GAMMA SIGMA**

DUKE

### **Snake & Sword**

Derrick F. Coleman

### **Founders Club**

Rev. William H. Privette

## **GAMMA TAU**

DRAKE

### **Freeman Fellow**

Thomas J. Rossley, Jr.

### **Chase Council**

Michael J. Elston  
Nolan C. Mitchell  
John B. Shrader

### **Century Club**

Laurence K. Apple  
Barry R. Blankfield  
James W. Carson  
Allen L. McCoy

### **Men Since '56**

Christopher E. Swan

### **Heritage Club**

Gregg A. Shaffer

## **GAMMA UPSILON**

BRADLEY

### **Benefactor Club**

Dru A. Neikirk

### **Board of Visitors**

Sean M. DonCarlos

### **Chase Council**

Gregory L. Fletcher  
Robert D. Goodale  
Ronald J. McGauvran

### **Century Club**

William T. Griffin  
William H. Haynes  
Craig M. Sjurset

### **Men Since '56**

John E. Kemp

### **Founders Club**

Ryan M. Oloris  
Bruce E. Semlow

### **Heritage Club**

James E. Knuth

## **GAMMA PHI**

NEBRASKA WESLEYAN

### **Chase Council**

Hal L. Guyer

### **Century Club**

Dustin E. Bartley  
Marvin G. Bures  
Gerald L. Clark  
Dean L. Crewdson  
Kenneth A. Kluck

## **GAMMA CHI**

RANDOLPH-MACON

### **Century Club**

Jason D. Carmichael  
Henry S. Chenault, Jr.  
Michael W. Goynne

### **Men Since '56**

Joseph E. Hurley



## GAMMA PSI

### PUGET SOUND

#### Century Club

Milton M. Fukuda  
James F. Leggett  
Michael A. Ramoska  
George C. Wirsdorfer

#### Men Since '56

Gregory M. Elley  
G. Randall Nulle

#### Founders Club

Richard A. Nevitt

## GAMMA OMEGA

### VANDERBILT

#### Snake & Sword

Joe B. Brown

## DELTA ALPHA

### LINFIELD

#### Chairman's Council

Leon W. Stroud

#### Freeman Fellow

Harold R. Gibson

#### Century Club

Steven A. Pickering

#### Men Since '56

David C. Rohrer

## DELTA BETA

### GEORGIA

#### Freeman Fellow

Thomas R. Sawyer, II

#### Chase Council

David B. Bentley  
Henry P. Long, Jr.  
Bruce R. Smith

#### Century Club

George B. Duke, Jr.  
Claude G. Horne, Jr.

#### Men Since '56

Benjamin S. Grayson

#### Snake & Sword

Joseph A. Musick  
John C. Strickland

#### Heritage Club

Robert E. Walter

## DELTA GAMMA

### WV WESLEYAN

#### Century Club

Dr. James P. Godsey  
Gregory D. Lessig  
Clyde R. Trathowen

#### Men Since '56

David M. Callahan

#### Snake & Sword

William R. Fahrner

## DELTA EPSILON

### MIAMI (FL)

#### Founders Club

Joseph V. Miller, III

## DELTA ZETA

### NEBRASKA-OMAHA

#### Freeman Fellow

Capt. Michael L. Farquhar

#### Century Club

James M. Harrington  
Dr. Thomas D. Wintle

#### Founders Club

Loren E. Bender

#### Heritage Club

Eugene D. Mertz  
Jimmie L. Pinkham, III

## DELTA ETA

### COLORADO STATE

#### Century Club

Dr. Thomas A. Jones

#### Men Since '56

Matthew B. Brewer  
Victor J. Esposito

#### Founders Club

Paul H. Graham

#### Heritage Club

Brandon B. Majmudar

## DELTA THETA

### TOLEDO

#### Chase Council

Dr. Thomas J. Haverbush  
James D. Neumeyer

#### Century Club

Archie D. Call  
Thomas Kerscher  
Kevin P. Kross  
Corey A. Obringer  
Michael J. Truchan

#### Men Since '56

T. Mark Sweeney

#### Snake & Sword

William M. Romp  
Donald R. Sroczynski

#### Heritage Club

Allan R. Lacy

## DELTA IOTA

### NORTHWESTERN

#### Century Club

James D. Jeffrey  
Keith R. Knoblock  
Dr. Eric E. Moum  
Bruce A. Petsche

#### Men Since '56

Dr. G. Todd Bessinger

#### Snake & Sword

Jack D. Ehrhardt, Jr.

#### Heritage Club

Martin B. McClintock

## DELTA KAPPA

### BALL STATE

#### Chairman's Council

Scott M. Thomas

#### Freeman Fellow

Bradrick S. Burk  
Tyler J. Clemens  
Chad M. Ellis

Richard L. McCauley

Robert H. Stine

#### Chase Council

Dr. Norman D. Ross  
Joshua A. Wilson

#### Century Club

Thomas L. Axon  
Darrell Brammer  
Christopher J. Clemens  
Dale F. Hughes  
Larry K. Ottinger  
Raymond E. Schafer

#### Men Since '56

Matthew L. Dafforn  
Joseph L. Kaiser  
Jesse F. Shriver, Jr.  
Thomas W. Tripp  
Bernhard G. Wallmann  
Craig C. Winegardner

#### Snake & Sword

Scott A. Cole  
Richard A. Davisson  
David E. Fidler, II  
Jeffrey D. Foraker  
Jeffrey R. Fordeck  
Neal E. Lang  
Ryan S. Stemen

#### Heritage Club

Allerdyce D. Fidler  
Maj. Nicholas T. Sporinsky

## DELTA MU

### TEXAS

#### Freeman Fellow

Paul A. Broman

#### Chase Council

Joshua M. Harkins

## DELTA NU

### VERMONT

#### Century Club

David L. Greemore

## DELTA XI

### VALPARAISO

#### Century Club

Cary T. Conrad  
Elliott L. Manke  
Otto Teske, Jr.  
Howard A. Thrun, Jr.

#### Snake & Sword

Gary L. Kovanda

## DELTA OMICRON

### GETTYSBURG

#### Freeman Fellow

David E. Cowan

#### Chase Council

Alfred J. Darold  
Mark R. Gage  
Lt. Col. Glenn J. Meigel  
Shawn T. Prohaska  
R. S. Snyder  
Thomas J. Vignola

#### Men Since '56

Jeffrey H. Glisson  
Dr. J. Stephen Munzinger  
Chauncey O. Johnstone

#### Snake & Sword

George G. Young, III

#### Founders Club

Brian P. Malfettone  
David R. Petry

## DELTA PI

### INDIANA STATE

#### Board of Visitors

Robert W. Best

#### Chairman's Council

Ralph H. Hansen

#### Century Club

Robert L. Baxter  
Jeffrey R. Bogdan  
Douglas L. Craig  
James L. Powell  
James R. Steed

#### Men Since '56

Jonathan O'Neal  
Tad H. Randolph

#### Snake & Sword

Richard W. Hinton

#### Founders Club

Brett C. Deckard  
Daniel R. Maehler  
William J. McGill  
John M. Schoenle

## DELTA RHO

### NC STATE

#### Chase Council

Donald C. Etheridge  
Brett G. Gillies

#### Century Club

Robert K. Fisher  
Dr. Allen G. Greenwood  
Bryan A. Hogan  
Raymond E. Littlefield  
William E. McCullough, Jr.  
Marvin B. Sutton  
Robert K. Updegrave Jr

#### Men Since '56

Thomas H. Eck  
Irving G. Hay

#### Heritage Club

Dylan Inman

## DELTA SIGMA

### CLARKSON

#### Chase Council

Jeffrey D. Sturtz

#### Snake & Sword

Vito Debartolo

#### Heritage Club

Sean P. Sweeney

## DELTA TAU

### KENT STATE

#### Century Club

Keith W. Keller  
Dr. Keith D. McFarland

#### Men Since '56

Kenneth F. Dornbush  
Kent B. McKinnell

#### Snake & Sword

Bradley L. Heiges

## DELTA UPSILON

### ARIZONA STATE

#### Benefactor Club

M. Walt Davis

#### Freeman Fellow

Dennis L. Crow  
David H. Lee  
Richard A. Menzel  
Jason P. Tortorici

#### Chase Council

Stephen A. Baker, Ph.D.  
Scott C. Mara  
Col. Dave O. Paul

#### Century Club

Ronald Bernal  
Bradley J. Duchain  
Andy J. James  
Paul R. Ohlendorf  
Gary C. Quinn  
John D. Sandner  
Frank M. Thomas, IV

#### Men Since '56

Jonathan M. Elliott  
Antonio R. Espinoza

#### Founders Club

Joseph Bacskay  
Justin M. Lane  
Devin B. Paltenghi

## DELTA PHI

### NORTH TEXAS

#### Benefactor Club

Vance K. Maultsby, Jr.

#### Freeman Fellow

Travis D. Sullivan, Jr.

#### Chase Council

George B. Foster  
Craig O. Nicholson

#### Century Club

Joseph L. Longoria  
Dr. Gregory S. Rab  
John T. Wilkinson

#### Snake & Sword

Gregory P. Dowdy  
Timothy J. McNamara

#### Founders Club

Matthew H. Reaves

#### Heritage Club

James McCubbin

## DELTA CHI

### LENOIR-RHYNE

#### Chase Council

Robert R. Rhyne, III

#### Century Club

Michael W. Hinshaw  
Bruce T. Million  
Ryan N. Pruett

#### Men Since '56

John W. Sieverts

#### Snake & Sword

Joe C. Epting, Jr.

## DELTA PSI

### KANSAS

#### Leadership Club

M. Lindsay Olsen

#### Benefactor Club

Stephen D. Edwards

#### Chairman's Council

James A. Baumann  
Ryan P. Gerstner  
Christopher H. Kennedy  
David W. Wurth

#### Freeman Fellow

Daniel W. Deaver  
Dana K. Richardson

#### Chase Council

David M. Garcia  
John C. Williams

#### Century Club

Benny D. Croyle  
Dr. Richard K. Friesner  
Mitchell J. Nolan  
Bradley P. Proctor  
Kenneth R. Rueff  
Martin E. Seem

#### Men Since '56

Blake T. Denniston  
Linus J. Grikis  
Paul G. Hohmann  
Andrew J. Knopp  
Christopher H. Rahimian  
Joseph P. Schulte  
Dan L. Smith

#### Snake & Sword

Dr. Cleve W. Howard

#### Founders Club

Mason T. Brown  
Christopher C. Mandernach  
Nick A. Saleh  
James P. Scherer  
Brian J. Votava

#### Heritage Club

Eliot N. Alpert  
Brandon D. Petty  
Thomas J. Watson  
Matthew G. Weldon  
Michael L. Whitcomb, Jr.

## DELTA OMEGA

### RIPON

#### Century Club

Zachary R. Baitinger  
James R. Mensching

#### Men Since '56

Daniel V. Burk  
David S. Fleming  
Nicholas J. Osenberg

#### Founders Club

William C. Bartlett  
Anthony J. Kemp  
Caleb R. Klinzing

## EPSILON ALPHA

### HIGH POINT

#### Chase Council

Wayne F. Dietz

#### Century Club

Ronald A. Moore

# Foundation Chapter Scholarship Recipients

The Foundation Chapter provides scholarships to brothers seeking undergraduate or graduate degrees who demonstrate outstanding academic performance, service to the Fraternity, school, and community; leadership abilities; financial need; and other clear personal and career goals and objectives.

This year, more than **\$266,000** in Sherwood and Janet Blue Memorial Scholarships was awarded to brothers pursuing a wide range of studies. The Victor Simon Memorial Scholarship awarded **\$44,750** to brothers majoring in engineering.

## Beta/MIT

Brian Robinson  
Andres Sevilla

## Gamma/Maine

Tyler Humphrey  
Justin McCauley  
Laird Stratton

## Zeta/New Hampshire

Jack Kearing

## Mu/California

Robert Carillo  
Shane Schulte  
Ashok Sundararaman  
Gavin Whiteside

## Xi/Virginia

Jake Antmann  
Orion Cohen

## Tau/Florida

Justin Clark  
Matias Jaramillo  
Jack Levy  
Aidan Lubin  
Sazzad Mabud  
Sam Stone  
Jared Weingard

## Phi/North Dakota State

Nicholas Antonoplos  
Jacob Freed  
Matthew Landon  
Tyson Marshall  
Thomas Milbauer  
Ben Pocta  
Nathan Thiner

## Chi/Auburn

Brady Davidson  
Dylan Pearson  
Robert Rivera  
Will White  
Richard Wingate

## Alpha Delta/Purdue

Andrew Callas  
Jacob Hill  
Jett Stad

## Alpha Iota/Indiana

Zach Finder

## Alpha Lambda/ Ohio State

Ryan Hernandez

## Alpha Mu/Iowa State

Liam Dacre  
Logan Engebretson  
Like Friedrichs  
Joseph Hansen  
Blake Wagoner

## Alpha Nu/Georgia Tech

Cole Scott

## Alpha Xi/Delaware

Cole Operbeck

## Alpha Pi/Minnesota

J.J. Dewing  
David Peterson

## Alpha Rho/Washington

Merric Malley

## Alpha Tau/Ohio

Ethan Flora

## Alpha Psi/Maryland

Rece Gardner  
Eric Tien

## Beta Theta/Drexel

Josh Do

## Beta Kappa/Hamline

Carter Arhart  
William Walker

## Beta Lambda/Akron

Jonathan Clawson  
William Prescott  
Zachary Stachera

## Beta Nu/Case Western

Aditya Rengaswamy

## Beta Omicron/ Cincinnati

Caulin Booher

## Beta Sigma/Lehigh

Kevin Yang

## Beta Phi/Nevada

Carter Gehlken

## Beta Psi/Presbyterian

Jacob Cannon  
Sam Johnson  
Lyle Jones

## Gamma Delta/ Florida Southern

Dylan Olive

## Gamma Lambda/ Denver

Connor McCray

## Gamma Xi/ San Jose State

Umesh Singh

## Gamma Rho/ Florida State

Robert Cotter  
Kenneth Romero

## Gamma Tau/Drake

Eli Benson  
Caden Collins  
Michael Cummings  
Matt Glazier  
Isaac Hager  
Ben Jackels  
Griffin Kohl  
Patrick Lucas  
Ethan Roemmich  
Jacob Vins

## Gamma Phi/ Nebraska Wesleyan

Kyle Goodban  
Mason Lee  
Matthew Utey

## Gamma Chi/ Randolph-Macon

Ryan Deavers

## Delta Alpha/Linfield

Vinny Niosi

## Delta Beta/Georgia

Joshua Baylor  
Joseph Crisanti  
Owen Mazanetz

## Delta Eta/ Colorado State

Kagan Baker  
Nick Gerry  
Tyler Johnson  
William Maher  
William Murphy

## Delta Theta/Toledo

Michael Ellerman

## Delta Mu/Texas

Diego Ayala  
Ryan Doherty  
Christopher Favela

James Gatta  
William Kristo  
Saketh Mamidi  
Andrew Tang

## Delta Pi/Indiana State

Jonathan Mueller

## Delta Rho/NC State

Cian Hughes  
Jake Wade

## Delta Upsilon/ Arizona State

Sterling Kelley  
Reese Kokitus

## Delta Psi/Kansas

Wyatt Hofstetter

## Delta Omega/Ripon

Jacob Nelson

## Epsilon Delta/ Youngstown State

Jacob Huzyak

## Epsilon Eta/IUP

Alex Swan

## Epsilon Theta/Tufts

Liam Castrucci  
Kevin Zeng

## Epsilon Kappa/Idaho

Zackary Bridges  
Derrek Flynn  
Same Pape

## Epsilon Phi/ Central Missouri

Ethen Albert

## Zeta Alpha/ Slippery Rock

Lucian Dean

## Zeta Epsilon/ Long Beach State

Peter Atyia  
Jason Massey

## Zeta Kappa/ Ohio Northern

Evan Fisher

## Zeta Lambda/ Westminster

Izayah Bojanac

## Zeta Xi/UC-Davis

Brady Bennigson

## Zeta Tau/Michigan-Flint

Douglas Self

## Eta Beta/ Eastern Kentucky

Travis Pendygraft

## Eta Kappa/ James Madison

Joshua Schaffner

## Eta Lambda/ Virginia Tech

Hunter Samaniego

## Eta Omicron/ Northwestern State

Jairus Killings

## Eta Pi/East Stroudsburg

Joe Halus

## Eta Upsilon/Texas A&M

Devon Kelly

## Eta Psi/UAB

Bailey Anderson  
Preston Askew  
Mac Baxter  
Joseph Bell  
Winfred Brittain  
Logan Burnett  
Alex Chatta  
Nicholas Christian  
Edwin Cruz  
Roshan Dahale  
Jacob Graves  
Joseph Helmsing  
Ethan Hollans  
Joe McClellan  
John Moody  
Justin Ryu  
Luke Statom  
Tyler Thomas  
Oren Turnbough

## Eta Omega/Chico, CA

Mitchell Morrison  
Austin Wilson

## Theta Eta/Sam Houston

Zach Baggett  
Brooks Havard

## Theta Nu/Rowan

Connor Handley

## Theta Rho/ McNeese State

Trajan Cella  
Dalton Guillory  
Cameron Scallan

## Iota Beta/ Missouri State

Clay Armour  
Matthew Huff  
Dane Keller  
Andrew Trimble

## Iota Theta/ Central Florida

Oliver Beardsley  
Thomas Boccagno  
Alec Degen  
Alex Olsen

## Iota Lambda/Longwood

Austin Rapole

## Iota Pi/LSU

Collin Casseri

## Iota Tau/ Northern Kentucky

Ben Lambert

## Iota Phi/South Carolina

Nick Baldino  
Grant Ruhlen

## Iota Psi/RIT

Bertan Berker  
Aidan Lynch  
Tanishq Meka

## Kappa Theta/ SUNY Geneseo

Jason Copella  
Orlando DiBacco  
Marcus Kautzman

## Kappa Nu/Colorado

Dominic Mazzuca  
Bradley Sides

## Kappa Omicron/ Tennessee

Jack Peters  
Gianni Peterson  
Paul Poole  
Benjamin Reid



## EPSILON BETA

LYCOMING

**Century Club**

Bruce R. Tucker

**Men Since '56**

Kenneth J. DeGraw, Jr.  
Gregory M. Helbeck

## EPSILON GAMMA

WIDENER

**Chase Council**

Edwin S. Carpenter  
David M. Drass

**Century Club**

Dr. Carl Spirazza  
Kevin J. Spross

**Men Since '56**

Ronald J. Deramo  
John R. Derr  
Charles K. Miller  
Herbert K. Schulze, III

**Snake & Sword**

John R. Balis  
David B. Meltzer  
George F. Tittmann  
Hunter N. Tower

**Heritage Club**

Capt. John C. Smith

## EPSILON DELTA

YOUNGSTOWN STATE

**Chairman's Council**

Dr. Raymond A. Yozwiak

**Freeman Fellow**

Robert E. Cooley, II

**Chase Council**

Peter E. Dalton

**Century Club**

Thomas P. Ambrose  
Craig J. Brenner  
Steven S. Casper  
Gary D. Swanson

**Men Since '56**

James R. Degregory  
James C. Klepin

**Snake & Sword**

James A. Kiracofe

## EPSILON ZETA

TAMPA

**Century Club**

Gilmore A. Dominguez  
Charles A. Ferguson  
Jack N. Rodriguez  
Paul Tomasino

## EPSILON ETA

IUP

**Century Club**

Francis C. Baum  
William L. Burdett  
Jennings F. Stright, Jr.

**Men Since '56**

George H. Gould

**Snake & Sword**

Dr. James H. McCormick

Andrew H. Schmitt

**Founders Club**

Theodore R. Hervol

## EPSILON THETA

TUFTS

**Century Club**

Mark S. Louchheim

**Men Since '56**

Daniel J. Hochman

**Snake & Sword**

James H. Hysen

**Heritage Club**

Evan L. Wecksell

## EPSILON IOTA

EAST CAROLINA

**Men Since '56**

Lyle W. Paradise

## EPSILON KAPPA

IDAHO

**Chase Council**

David L. Birsch  
Michael R. Miller

**Century Club**

John L. Blewett  
Jon M. Smith

**Men Since '56**

David H. Hawk

**Snake & Sword**

Justin G. Novacek

**Heritage Club**

Connor P. Dahlquist

## EPSILON MU

EASTERN MICHIGAN

**Century Club**

Col. Leroy E. Conner, Jr.  
Michael C. Pherson  
Robert W. Shaffer, Jr.  
Dr. George M. Yellich

**Men Since '56**

Eric R. Helling, M.D.  
Ralph M. Miron

**Founders Club**

Col. James R. Starr

## EPSILON NU

CSU-LA

**Chase Council**

Dr. Robert Benavides, Jr.

**Century Club**

Michael J. Schoettler

**Men Since '56**

Donald E. Kurtz

**Snake & Sword**

Richard H. Schott

## EPSILON XI

CLARION

**Chase Council**

Paul R. Gray

**Century Club**

James J. Cunningham  
William M. Russo  
Charles A. Steck

**Snake & Sword**

Todd E. Pavoli  
John F. Torchia

## EPSILON OMICRON

WAYNESBURG

**Chase Council**

Phillip E. Pulis, Jr.

**Century Club**

Jeffery L. Ness

**Snake & Sword**

David G. Rogers

## EPSILON PI

NORTHERN ILLINOIS

**Chairman's Council**

William A. Priebe

**Chase Council**

Benjamin Reyes

**Century Club**

Jerome J. Webb

**Men Since '56**

Federico A. Dugena  
Gary M. Krewer

**Founders Club**

Harold A. Anderson  
Michael J. Steffens

## EPSILON RHO

RIDER

**Chase Council**

John K. Smith

**Century Club**

Stuart J. Bury  
Raymond A. Hiza  
Bruce N. Spring

**Snake & Sword**

Robert J. Kakoleski Jr

## EPSILON SIGMA

WAGNER

**Chase Council**

Richard P. Santoriello

**Century Club**

John A. Mattheson  
Robert E. McDivitt, Jr.  
Michael D. Murphy

**Men Since '56**

Hon. Joseph J. Maltese  
Robert M. Rams  
Michael J. Shannon, III  
John K. Sheldon  
Peter M. Syrdahl

**Founders Club**

Patrick R. DeMarco  
Raymond A. Menna  
Ronald A. Rainero

**Heritage Club**

James Serton

## EPSILON TAU

STEPHEN F. AUSTIN

**Freeman Fellow**

David S. Harry

**Century Club**

Harold F. Christmann, Jr.  
Douglas J. Kayem

Paul W. Wright

**Men Since '56**

Bart A. Reese

**Snake & Sword**

Dakota W. Watson

## EPSILON UPSILON

CENTRAL MICHIGAN

**Board of Visitors**

Michael J. Kistler

**Freeman Fellow**

James W. Smith

**Snake & Sword**

Steven D. Horaney  
Thomas M. Manney

**Founders Club**

Gary M. Van Ornum

## EPSILON PHI

CENTRAL MISSOURI

**Chairman's Council**

Michael J. Mayer  
Douglas G. Schemenauer

**Freeman Fellow**

William A. Tetley, Jr.

**Chase Council**

Craig D. Coen  
Steven A. Cumbea

**Century Club**

T. Chastian Parks  
Phillip R. Rodewald  
Fred A. Rollert, Jr.  
Charles E. Simmons

**Men Since '56**

Col. Roger Baskett (Ret.)  
William H. Clay, II  
Casey C. Cochran  
Jeffrey L. Johnson

**Snake & Sword**

Andrew T. Boehm  
Kenneth D. McAlpin  
Christopher R. Murray  
Daryl G. Redel  
Richard A. Schmidt, II  
Stanley E. Sweeney

**Founders Club**

Darren R. Scotti  
Timothy R. Tinnin

## EPSILON CHI

MISSOURI S&T

**Century Club**

Lawson G. Wideman, Ph.D.

## EPSILON PSI

NJIT

**Chairman's Council**

Vincent F. Bennett

**Chase Council**

Joseph P. Bieksha

**Century Club**

Joseph F. Petersack  
Thomas K. Rospos  
Michael E. Rusak  
Joseph C. Striedl

**Men Since '56**

Vahe Baboobian  
Patrick M. Kelleher  
Michael J. Noble  
**Snake & Sword**  
Charles R. Hentz  
Alan F. Guillemain

## EPSILON OMEGA

SACRAMENTO STATE

**Freeman Fellow**

David J. Lucchetti

**Heritage Club**

Eric T. Twohey

## ZETA ALPHA

SLIPPERY ROCK

**Century Club**

Dr. Donald F. Hannon  
Kevin W. Krepinevich  
Robert V. Schoeller, Jr.

**Snake & Sword**

Sky R. Pederson

**Heritage Club**

James W. Jackson  
Pfc. Daniel S. Pennell

## ZETA BETA

ADRIAN

**Chairman's Council**

Alan B. Copeland  
John C. McCurdy  
Rev. Dr. Terrance Robinson

**Century Club**

Gregory R. Dalida  
Troy A. Schmidli  
James D. Schweigert

**Men Since '56**

James R. Grissinger  
S. Maxwell Smith

**Founders Club**

Brian Copeland  
Dr. Robert C. Guy  
Daniel W. Hobson  
Patrick J. Kilbane, Jr.  
Christopher P. Ludwig, II  
William E. McCaulley  
James F. Thompson  
Steven A. Wells

**Heritage Club**

James E. Carlson, D.V.M.

## ZETA GAMMA

ALBERTA

**Snake & Sword**

Marc J. Essensa

## ZETA DELTA

ST. CLOUD STATE

**Century Club**

Wayne D. Kruchten

**Men Since '56**

Brandon J. Manderscheid

## ZETA EPSILON

LONG BEACH STATE

**Board of Visitors**

James J. McMahon

**Chairman's Council**

Charles A. Hodgdon  
Carl J. Johnson

**Chase Council**

Brian P. Comstock  
James D. Ciampa  
Christopher H. Graham  
Nathan T. Perez  
Michael G. Pilatos  
Richard S. Robbins  
Tyler J. Whaley

**Century Club**

Hon. John F. Briscoe, Jr.  
John M. Giacomini  
Carl E. Lord  
Gary R. Okafuji  
Kurt C. Riegelman  
Jon P. Timmons

**Men Since '56**

Todd C. Stauder  
Dean P. Zibas  
Scott M. Young

**Snake & Sword**

David C. Arnold

**Founders Club**

Giovanni Hortua  
Aaron A. Porras

## ZETA THETA

TROY

**Chase Council**

Mark B. Howell  
Danny L. Sikes

**Century Club**

Benjamin B. Williams, II

**Men Since '56**

John P. McKeown

## ZETA KAPPA

OHIO NORTHERN

**Freeman Fellow**

William J. Sweet

**Chase Council**

Douglas R. Pfitzenmaier

**Century Club**

Richard E. Deeter  
Gene R. Eckler  
Richard L. Erb  
James W. Pyle, Jr.  
William B. Rowe  
Jeffery A. Shick

**Men Since '56**

Timothy A. Dersch  
Gregory P. Dunham  
Wayne L. Fryback

**Snake & Sword**

John E. Tuthill

**Founders Club**

Barry A. McEwen

**Heritage Club**

William L. Sampson

## ZETA LAMBDA



## Staffing Updates:

In October 2023, we welcomed Jill Zager as Director of Annual Giving. Jill is responsible for overseeing all stewardship and annual giving, as well as marketing, communications, and branding for the Excellence Fund. A graduate of Southern Illinois University and a proud alumna of Sigma Sigma Sigma, Jill has served Tri Sigma in a variety of roles at the local, regional, and International levels.

### Chase Council

Dr. Preston E. Pierce

### Century Club

Harry C. Neel

### Men Since '56

Carl H. Greene  
Steven P. Klebacha

### Snake & Sword

Jay A. Cummins  
James P. Warnock

### Founders Club

Nathaniel C. Ferrebee  
Douglas A. Osman  
Jeremy A. Roberts

### Heritage Club

Brice J. Bokesch  
Brian D. Farrington  
Anthony J. Groves  
Daniel J. Larson

### ZETA NU

#### PARSONS

### Freeman Fellow

Michael G. Friedel  
Bruce B. Rotherforth

### Chase Council

William T. Clark

### Century Club

John E. Dickinson

### ZETA XI

#### UC-DAVIS

### Chairman's Council

Dr. Bryan J. Holcomb

### Century Club

Winthrop H. Banning  
Selim F. Freiha  
Shaun L. Hamlin  
James E. Walker

### Men Since '56

Steven L. Ashton  
Gary R. Gailbreath  
Dr. Jon K. Hooper  
Hon. Thomas M. Maddock  
William C. Marks

### Heritage Club

Derek Yau

### ZETA OMICRON

#### SHIPPENSBURG

### Century Club

Charles C. Yohn

### ZETA PI

#### OLD DOMINION

### Benefactor Club

Carlton F. Bennett  
John R. Vispo

### Board of Visitors

Kevin R. Mack

### Chase Council

Townsend N. Barnett, Jr.  
Thomas D. Capozzi  
Steve W. Gonzalez  
James J. Kendall, III  
Norman G. Odeneal, II  
Everette T. Smith  
Donald Wilhelm

### Century Club

Christopher Curtis  
Dr. David R. Farmer  
James G. Hunt, Jr.  
William M. Martens  
Samuel N. Mayo, III  
William B. Osborn  
Everette T. Smith  
Harold J. Winer

### Men Since '56

Edward M. Coyle Sr.  
Kenneth I. Frohlich  
Michael J. Henry  
Sean T. Huggins  
Christopher Jones  
John F. Jones  
Matthew D. Lynch  
Glenn K. McGrath  
Brett A. Scholz  
Robert J. Wenner

### Snake & Sword

Lt. Cmdr. Thomas Condit  
Brian P. Dewan  
Raymond A. Gunter

### Founders Club

Jeffery F. Rhue

### Heritage Club

John M. Horton

### ZETA RHO

#### KENTUCKY

### Chase Council

Jerry E. Crail  
L. Kenneth Fister

### Century Club

Thomas H. Porter  
Rev. Gary M. Simpson  
Richard A. Whitaker

### Men Since '56

Joseph L. Brooks

### Snake & Sword

John E. Hinkel  
Brandon A. Loschiavo

### Founders Club

Evan C. Botkin  
Michael M. Bryant  
Michael T. Feamster  
Renaldo O. Juanso  
Craig W. Hardin  
Herman M. Lucas

### Heritage Club

Gregory B. Poat

### ZETA SIGMA

#### WISCONSIN-RIVER FALLS

### Board of Visitors

David A. May  
Murray B. Wachtel

### Chairman's Council

Gary W. Maier  
Robert H. Moody, II  
Jeffrey R. Storey

### Freeman Fellow

David J. Chell  
Chad R. Goetsch  
James R. Henkel

Royce A. Keehr  
John P. McLaughlin  
Kyle J. Weaver

### Chase Council

Derek C. Brandt  
Chadd E. Novak  
Keegan R. Olson  
Joshua T. Pals  
Jeremy J. Untz

### Century Club

Brian D. Alton  
Larry F. Behne  
Shaun R. Bird  
Benjamin V. Blanchard  
Frederick D. Benson  
Mark C. Goetsch  
Jeremy S. Knospe  
Robert D. Moody  
Reese L. Pfeiffer  
Robert H. Rasmussen  
Aaron S. Taylor  
Frederic L. Wiese

### Men Since '56

Terry G. Cooney  
Nicholas M. Doten  
Robert L. Kondrasuk  
James R. Marzolf  
Patrick J. May  
Dr. John W. Mercer  
David E. Olson  
Evan T. Siranni  
Stephen M. Zillmer

### Snake & Sword

David A. Chinnock  
John M. Egan  
Marcus A. Engle  
A. William Gorham, Jr.  
Mikhael A. Keyser  
Gradon E. Nelson

### Founders Club

James E. Crain  
Dylan J. Giebel  
Warren E. Higgins  
Jon M. Hogan  
Devin B. McDaniels  
Kevin J. Monzel  
Robert W. Olson  
David J. Tennie  
Eric D. Westerman  
Robert L. Worm  
Matthew D. Zastrow

### Heritage Club

Travis C. Bretoi  
Daniel H. Gavin  
Kyle J. Kinzer  
Joseph F. Roche  
Joseph Schulte

### ZETA TAU

#### MICHIGAN-FLINT

### Century Club

Joseph M. Macko

### Men Since '56

Richard F. Jackson

### Snake & Sword

Wade T. Merrill

### Founders Club

Eric G. Freiss

### ZETA UPSILON

#### HARTFORD

### Century Club

Jeremy R. Bombard

### Snake & Sword

Charles P. Boornazian

### Heritage Club

Jacob D. Unger

### ZETA PHI

#### CAL POLY

### Century Club

Jon A. Fasola

### Men Since '56

Y. Laurence Kimura

### Snake & Sword

Richard M. Pollastrini

### Founders Club

Connor V. Crawford

### ZETA PSI

#### WESTERN ILLINOIS

### Century Club

Col. Kevin Burdick (Ret.)

### Men Since '56

Robert J. Bialk  
Victor D. Caricato  
Richard L. Lundeen  
David D. Onion

### Snake & Sword

Mark K. Ebben  
Bruce R. Hovanec  
Keith A. Kohlmann

### Founders Club

Gary L. Bialk

### ETA ALPHA

#### CLEMSON

### Chase Council

Tobin E. Proctor

### Century Club

Darrin A. Shoemaker

### ETA BETA

#### EASTERN KENTUCKY

### Chase Council

Thomas E. Seward, Jr.

### Century Club

Michael S. Fletcher  
Thomas H. Knight, Jr.  
Lt. Col. Jack C. Whitney

### Men Since '56

Jacob C. Bates  
Walter S. Brown, Jr.  
Gary S. Brueggen  
Craig T. Hafer

### Snake & Sword

John L. Ison

### Founders Club

John A. Kinnett  
Larry C. Heinzelman

### ETA GAMMA

#### MOREHEAD

### Chairman's Council

Darick H. Brown

### Chase Council

Todd O. Kamphaus

### Century Club

Mark J. Fairchild  
Frederic G. McCarty, II  
Timothy P. McGill

### Men Since '56

David K. Miller  
Robert C. Swearingen

### Snake & Sword

Richard C. Brown  
Justin D. Price  
Darrel T. Sadowski

### Founders Club

Harold S. Fry  
Jeremy L. Mullins  
John D. High

### Heritage Club

Robert S. Kelly

### ETA DELTA

#### BABSON

### Chase Council

John D. Fridholm  
David M. Gottlieb

### Century Club

Christopher I. Johnson  
Owen S. Mael  
John A. Zanchi, Jr.

### Men Since '56

Marc A. Green  
Stephen J. Perry  
Adam M. Sachs

### Snake & Sword

Harold M. Cooper, III  
James W. Craig

### Founders Club

Richard Snyder

### ETA ZETA

#### EDINBORO

### Men Since '56

Jared P. Brown  
Eric M. Pope  
Kurt D. Schiemer

### Snake & Sword

Thomas E. Ryan  
David C. Strieder

### Founders Club

Daniel Kliber, Jr.

### ETA IOTA

#### NEWBERRY

### Century Club

William M. Cromley, III

### ETA KAPPA

#### JAMES MADISON

### Chase Council

G. Larry Short  
Benjamin R. Hill

### Men Since '56

Dr. Ronald T. Buchanan  
Christopher P. Russo

### Snake & Sword

Matthew J. Babaian  
Dennis R. Willis

### Founders Club

Patrick C. Mellon  
Jason A. Pinneri  
Anthony P. Riley, II

### ETA LAMBDA

#### VIRGINIA TECH

### Chairman's Council

Taylor H. Lewis  
David M. Wilberger, Jr.

### Freeman Fellow

Rear Adm. J. Scott Burhoe  
(Ret.)

Franklin T. Overbey

### Chase Council

Patrick L. Devlin  
Charles G. Maton

### Century Club

Skip Lemanski

### Men Since '56

Garland S. Bradfield  
Thomas J. Weeks, Jr.

### Snake & Sword

Donald T. Hajec

### Heritage Club

Michael S. Christensen  
John C. Irwin  
Michael F. Irwin

### ETA MU

#### FINDLAY

### Freeman Fellow

Stephen P. Piwowar

### Chase Council

David R. Hinds  
C. Douglas Lyon  
Bruce A. Olson

### Century Club

Benjamin A. Ciesinski  
Robert C. Solomon

### Men Since '56

Gary J. Herman  
Ray F. Kanzig

### ETA NU

#### ALMA

### Men Since '56

Kevin M. Kosch  
Snake & Sword  
Chad S. Merricle

### ETA OMICRON

#### NORTHWESTERN STATE

### Chase Council

Robert F. Chauvin

### Century Club

Paul W. Griffith  
Vanner J. Erikson

### Founders Club

Allen F. Carter



## ETA PI

EAST STROUDSBURG

### Board of Visitors

Dr. Richard W. Leland

### Chairman's Council

Allan J. Calarco  
Joseph R. D'Amore, Jr.

### Freeman Fellow

James A. Viola

### Chase Council

Randy S. Maugle  
Joseph J. Zywicki, Jr.

### Men Since '56

Winston J. Banks  
Daniel P. Bosillo  
Sean M. Fitzgerald

### SNAKE & SWORD

Michael D. Ratcliffe

### Founders Club

Eugene Milewski

### Heritage Club

Brandon E. Younkin

## ETA RHO

CENTENARY (LA)

### Freeman Fellow

Dr. J. Michael Wieting

## ETA SIGMA

ARKANSAS TECH

### Chairman's Council

Joe L. Clack

## ETA TAU

CSU-STANISLAUS

### Men Since '56

John Oushana

## ETA PHI

OAKLAND

### Chairman's Council

Edward A. Eickhoff

### Chase Council

James H. Pratt

### Century Club

Scott B. Kuzma  
John P. Stebbins

### Men Since '56

Justin A. Suarez

### SNAKE & SWORD

Joshua J. King  
Michael A. Young

### Founders Club

Jacob M. Johansson  
Thomas J. Lauder

## ETA CHI

GEORGE MASON

### Men Since '56

Amante DeCastro

### SNAKE & SWORD

Victor F. Altherr

### Founders Club

David M. Thomas  
Robert W. Thomas

## ETA PSI

UAB

### Founders Club

Christopher J. Chatta

## ETA OMEGA

CHICO, CA

### Freeman Fellow

David J. Scotto

### Century Club

Jeffrey P. Gutsch  
Michael J. Pusateri

### Men Since '56

Michael G. Nemetz  
Gregory A. Romer

## THETA BETA

TCNJ

### Freeman Fellow

William J. Stephenson, IV

### Century Club

Matthew E. Cohen  
Scott K. Friedly  
Matthew P. Green, Sr.

### Men Since '56

William C. Frazier, Jr.  
Roger D. McLarnon

### SNAKE & SWORD

Dennis F. Chavis  
Myron M. Gellman

## THETA DELTA

SANTA CLARA

### SNAKE & SWORD

Darren W. K. Ching

## THETA EPSILON

KENNESAW STATE

### Chase Council

Brian C. Kennel

## THETA ETA

SAM HOUSTON

### Freeman Fellow

Brian K. Hall

### Century Club

Ronald M. White

### Men Since '56

Monty Meave

## THETA IOTA

UC-SANTA CRUZ

### Benefactor Club

Herbert W. Morgan, III

### Board of Visitors

Eric R. Jayaweera

### Chairman's Council

Tyson Y. Lai

### Chase Council

Andres F. Velasquez

## THETA KAPPA

TEXAS TECH

### Founders Club

Cesar D. Rodriguez Jr

## THETA NU

ROWAN

### Century Club

Robert C. Moran, Jr.

### Men Since '56

Ronald T. Bansky

## THETA XI

VCU

### Chairman's Council

Jonathan N. Chasen

### Century Club

Anthony M. Engel

### Men Since '56

Brian C. Murphy

## THETA SIGMA

UC-SANTA BARBARA

### Chase Council

Michael A. Kohler

## THETA PSI

WISCONSIN-OSHKOSH

### Board of Visitors

Joshua J. Palleon

### Chairman's Council

Chad R. Strelow

## IOTA ALPHA

UNC-WILMINGTON

### Founders Club

David P. Hoxie

### Men Since '56

Brent S. Liner

## IOTA BETA

MISSOURI STATE

### Chase Council

Dr. Matthew B. Meyer

### Century Club

Peter J. Langston  
Scott A. Turk

### Men Since '56

Robert J. Eberling

### SNAKE & SWORD

Dalton J. Fischer  
Zachary T. Smith  
Brandon M. McCoy

### Founders Club

Jeff W. Kennedy  
Spencer W. Martin  
Landon W. Swearngin

### Heritage Club

John C. Byers  
Brandon P. Colter  
Gabriel R. Crain  
Abdillahi A. Dirie  
Sawyer A. Hawkins  
Matthew M. Hunt  
Austin C. Nolan  
Nicholas T. Schneider  
Elijah N. Warren

## IOTA ZETA

RADFORD

### Men Since '56

Joseph M. Longo

## IOTA ETA

PACIFIC

### Freeman Fellow

Matthew J. Olson

Gerald D. Latasa, Jr.

### Century Club

Erick M. Hernandez

### Heritage Club

Nathaniel A. Lopez  
Stanley D. Ngo

## IOTA THETA

CENTRAL FLORIDA

### Men Since '56

Dr. Corey Esquenazi

### Founders Club

Nicolas B. Bottiglieri

### Heritage Club

Nikolas Fernandez  
Evan A. Nitzschke

## IOTA LAMBDA

LONGWOOD

### Chase Council

Thomas J. Dolan, III

### Founders Club

Phillip D. Burns

### Heritage Club

Cameron D. Patterson

## IOTA MU

MISSOURI

### SNAKE & SWORD

Justin C. Weisgarber

### Heritage Club

Zachary Tucker

## IOTA OMICRON

FIU

### Founders Club

Steven M. Gonzalez

## IOTA PI

LSU

### Men Since '56

Ethan Gremillion

### Heritage Club

Jacob A. Rogers  
Austin A. Howton

## IOTA PHI

SOUTH CAROLINA

### Founders Club

Michael M. Jennings

## IOTA PSI

RIT

### Chase Council

Dr. Reginald Rogers, Jr.

## AT-LARGE

### Heritage Club

Harold B. Grimes

## FRIENDS

### Board of Visitors

Liz Richardson  
Anonymous Donor

## Freeman Fellow

Dawn M. Taylor

## Chase Council

James R. England

## Century Club

Linda C. Buford  
John Przybylinski

## Men Since '56

Chris Louie  
Gary Mudder  
Sharon Nichols  
Kevin O'Neill  
Leslie Swathwood

## SNAKE & SWORD

Gary Altstadt  
Rebecca Easterling  
Denise Reikofski  
George Thomas  
Scott Wilson

## Founders Club

Dan Daley  
Dale Detjen  
Julia Egly  
Sue Gath  
Emma Geshay  
Rikki Jenkins  
Charles Keith  
David Klumb  
Loren Lorig  
Diane Mayer  
David Pope  
Jennifer Pritchard  
Constance Richardson  
Mary Ellen Sturm  
Jerry Teeson

## Heritage Club

Joel Abrahamsen  
Carrie Andersen  
Craig Batson  
Ron Becker  
Joe Boles  
Tim Booth  
Tom Brockway  
Dave Conner  
Jill Easterling  
James Emond  
Erick Faust  
Craig Froke  
Patti Goeway  
Patti Hiniker  
Mel Hokanson  
Lorulai Illa

Patty Johnson  
Peggy Johnson  
Brenda Kadlec  
Phyllis Kelly  
Roni Klein  
Linda Landwehr  
Boyd Lane  
Samantha Lewis  
Kirsten Mogren  
Katie Nolan  
Natalie Nolan  
Orland Olson  
Glen Otte  
Dan Raway

James Schoenberg  
John Sowieja  
Richard Storlie  
Taylor Supplee  
Duane Uhl  
Barbara Westenberg

## ASSOCIATIONS

### Presidents Circle

Grand Chapter of Theta Chi

### Leadership Club

Norwich Housing  
Corporation

## COMPANIES

### Leadership Club

Fidelity Charitable Gift Fund

### Board of Visitors

Benevity Community  
Impact Fund  
Morgan Stanley GIFT

### Chairman's Council

American Endowment  
Foundation

ImpactAssets  
Markel Corporation  
Schwab Charitable Fund

### Freeman Fellow

Wells Fargo Community  
Support Campaign  
YourCause

### Chase Council

AmazonSmile Foundation  
Charities Aid Foundation of  
America  
GE Foundation  
Mile High United Way  
Network for Good  
Renaissance Charitable

### Century Club

Communities Foundation  
of Texas  
Lumina Foundation  
United Way of Greater  
Atlanta

### Men Since '56

Bank of America Employee  
Giving Campaign  
Charities Aid Foundation of  
America c/o CyberGrants  
CyberGrants SPV, LLC  
Fidelity Brokerages  
Services LLC

### SNAKE & SWORD

Bank of America  
EIX Employee Giving  
Lockheed Martin  
Progressive

### Founders Club

Dakota Electric Association  
Give Lively Foundation  
KPMG  
Minnesota Realtors  
Wells Fargo



# Reunions and Relics

Within a few months of each other, alumni from Epsilon Xi/Clarion and Epsilon Eta/IUP, two chapters located only 60 miles apart in western PA, both held reunions and submitted stories that referenced paddles made by their pledge classes decades ago. These decorative, handmade wooden relics were displayed in both chapter houses and typically listed the men of a particular pledge class.



*Fifty years ago, Epsilon Xi's 1973 pledge class never dreamed where they would find their pledge paddle. L-R: Jay Desantis (1976), Lou "Bud" Faulx (1976), Mike "Spike" Cunningham (1975), Gary Gibson (1976), and Mike "Face" Ranallo (1976).*

## Pledge Class Finds Lost Antique

BY RON WILSHIRE, EXPLORECLARION.COM

Every year, some of the Theta Chi alumni [of Epsilon Xi Chapter at Clarion University] meet before Father's Day in Latrobe for a weekend of golf. However, this year members of the 1973 pledge class decided to visit Clarion to look at their old fraternity house.

They decided to meet at 11 a.m. at the fraternity house in Clarion, now called the Fulmer House Books and Collectibles, but the building was closed.

Jennifer Fulmer Vinson, owner of the business and mayor of Clarion Borough, told exploreClarion.com, "I was walking home from Main Street and got to 6th and Wood and glanced down toward the shop and noticed a few cars and several guys milling in front of the building, and I wanted to see if I could help.

"One of the guys turned around, and he was wearing a Theta Chi alumni shirt, and my suspicions were confirmed."

It was a matter of being in the right place at the right time.

Theta Chi alumnus **Jay DeSantis** said, "Mayor Vinson was very nice and opened it (the previous fraternity house) for us and gave us a tour.

"It was really a nice adventure, and she was so welcoming."

The adventure would continue as the former pledges explored their old stomping grounds.

"It was awesome and unbelievable; it was almost like divine intervention," said **Lou "Bud" Faulx**. "The timing was unreal. If you're from Clarion, you have got an awesome mayor."

The big surprise of the day occurred on the tour of the house when **Mike "Spike" Cunningham** discovered a pledge paddle

inside a closet on the house's third floor.

"Mike sees the names of our fraternity brothers, and then he looks, and the next thing he sees, Cunningham, and that's him. It's one of those tall ones with the names of the whole pledge class," explained Faulx.

"Guess what? I'm the one who made it. I painted it in 1973 and put the guys' names on it. Everybody's name was in alphabetical order, and nine guys on there pledged with us. It's unbelievable, and what's the chance of finding it 50 years later?"

The group said they wanted to buy the 1973 paddle, but Vinson said they could just take it, so the group contributed to the Fulmer House. Looking at all of the antiques on display in the Fulmer House, the pledge class of 1973 realized that they also treasure its antiques.

## The "Mean 15"

Epsilon Eta's spring 1983 pledges held a 40th class reunion in Conneaut Lake, PA, with 10 members of "The Mean 15" gathering at the home of one of their classmates. Reminiscing, tall tales, and much laughter added to the new memories created by the weekend's fellowship. The group FaceTimed a few brothers who were unable to attend, made toasts to others, and cherished the enduring bonds of brotherhood that remain strong over four decades and 15 lifetimes! We were also joined by **Kevin Gramley's** (1986) son, **Matthew** (2026), who is a freshly minted brother courtesy of Eta Alpha Chapter at Clemson. The Mean 15 class paddle also made a noteworthy appearance. **Bob Purdue** (1985) plans to restore the 40-year-old class paddle and deliver it back to the chapter house at IUP during homecoming.



*FRONT: Kevin Gramley (1986), Bob Purdue (1985), and Kevin Gaydosh (1985). BACK: Ed Baker (1986), Kurt Wallisch (1985), Tom Halligan (1985), Henry Szyman-ski (1986), Bob Chambers (1986), Larry Kasten (1985), and Chris Warwick (1986).*





## ETA/RHODE ISLAND

**Jack Eustis** (2023) earned the Cramer's Saber Award for Outstanding Senior Cadet. The award was named in honor of 1st Lt. Parker Cramer who was the first URI graduate to lose his life in Vietnam. The top senior each year is selected for the award.



## ALPHA DELTA/PURDUE

**Evan Patterson** (2024) received a full-time job offer in Washington, D.C., after attending the Capitol Hill Resolute Man Experience.

## BETA SIGMA/LEHIGH

Poets and Quants selected **Tobey Bill** (2023) for its 100 Best & Brightest Undergraduate Business Majors of 2023, describing him as a "finance and engineering double-major with an entrepreneurial mindset and a want to do good."



## GAMMA TAU/DRAKE

We raised \$28,000 to help send children to school in Belize.



## Teaming Up to Support the USO

Utilizing support from the USO, brothers of **Iota Sigma Chapter** at Towson University organized a charity event to help children of veterans. The brothers teamed up with the women of Alpha Phi to create and donate more than 100 care packages filled with school supplies. These packages will be sent to the USO D.C. Metro area stations for their 'Rucksacks to Backpacks' program, which helps children of service members by providing pens, pencils, notebooks, and more to aid them in their schoolwork.

This event not only demonstrated Theta Chi's commitment to extending an "Assisting Hand," but also highlighted Towson University's strong sense of community and togetherness. Students, teachers, and staff donated to support this effort, revealing the university's commitment to community impact, and making a positive impact beyond campus.







## From Gamma Mu with Love



Jim Ponstingle



Jim Baker

Just prior to entering Ohio University, **Nolan Ponstingle** (2027) and **Tyler Baker** (2027) became aware that their grandfathers had both attended Bowling Green State University in the 1960s. The two young men asked to be roommates and moved into the dorm together and soon both signed up for fall rush. It was then that the two finally discovered that their grandfathers were both Theta Chis—from the same chapter! Recently initiated by Alpha Tau Chapter, Nolan and Tyler are the grandsons of Gamma Mu/Bowling Green's **Jim Ponstingle** (1965) and **Jim Baker** (1967). Jim and Jim are good friends and still loyal brothers who were strong leaders and huge financial supporters during

Gamma Mu's recent reinstallation and beyond. They are both very proud of their grandsons and hope that they have the same great Theta Chi experience!



Nolan Ponstingle (front row, third from left), Tyler Baker (front row, second from left), and the fall 2023 initiates of Alpha Tau Chapter at Ohio University.



### ETA OMICRON/ NORTHWESTERN STATE

◀ **Jairus Killings** (2025) received the IFC's Outstanding Chapter Leader Award for bringing good energy and representation for Theta Chi to IFC and on campus, executing a lot of successful events, increasing participation of brothers, and for holding members accountable.

### IOTA THETA/CENTRAL FLORIDA

This fall, we hosted **International Marshal Steve Gonzales** who held a Sacred Purpose presentation about hazing prevention. We enjoyed his visit and hope to see him again! ▶



### IOTA MU/MISSOURI

We teamed up with Kappa Kappa Gamma to help support **Tim Tinnin's** (Epsilon Phi/Central Missouri 1982) Red Slipper Warrior Project with "Kobbler with the Kappas" and "Pies with Theta Chi." Kappas served 1,100 delicious bowls of cobbler to students who could also choose to throw a pie in the face of one of our brothers. Together we raised nearly \$13,000!



LEFT: Iota Mu/Missouri's **Grant Meyer** (2025) and **Walker Piles** (2024) join Kappa Kappa Gamma's **Samantha Chapman** to present a check for nearly \$13,000 both organizations raised to support **Tim Tinnin's** (Epsilon Phi/Central Missouri 1982) Red Slipper Warrior Project.





## Showers of Hope

BY GREG RUSH, ASSISTANT EDITOR



In 2022, the My Hero International Film Festival premiered *Building a Shower Trailer for Chico's Houseless on a Budget... of Love*, a short film featuring **Charles Withuhn** (Mu/California 1972) and his community service efforts in Chico, CA. The short film and Brother Withuhn were recognized with the festival's Humanitarian Award.

Brother Withuhn has been a commercial and electric contractor for 40 years, executing all the signage for Sierra Nevada Brewery in Chico, CA.

When he moved to Butte County in 2017, there was a shelter shortage and Withuhn began volunteering with the Chico Housing Action Team and would later become the volunteer director and president of North State Shelter Team.

Due to the COVID-19 pandemic, many people faced hard times, increasing the local homeless population. After Withuhn heard a story of a woman who hadn't had a shower in a year, he decided it was time to start making a difference in his community by designing mobile, self-contained showers for the less fortunate.

The film documents Withuhn's efforts in designing and building two shower stalls and water tanks on a car trailer with welders, carpenters, plumbers, cabinetmakers, and sheet metal workers lovingly donating their labor or providing materials at no cost or with a significant discount. Upon completion, the solar-powered mobile shower trailer offers two stalls, with one being ADA compliant, and costing \$40,000.

Withuhn reflected, "This is why Theta Chi and fraternity are important; it helps build a network of friends who can see you through life to call, talk to, vent to, laugh with, get some direction, and ask for help. If we are going to succeed as a nation, we need each other and we can't turn a blind eye to someone asking for help."

He added, "Creating and delivering opportunities for someone to have access to a clean, hot shower has been fun, fulfilling, and it makes me feel good that I've been able to lend an Assisting Hand."

Since opening, the mobile trailer has provided more than 1,000 showers to Chico's homeless population. And hope to the 1,000 who utilized it.



### ALPHA DELTA/PURDUE

**Wade Seaburg** (2002) is the chief revenue officer for Dragonfly Energy and collaborated with Purdue, replacing the Boiler-maker 'Xtra Special's' broken and end-of-life power components with Battle Born lithium-ion batteries.



ALPHA DELTA

RIGHT: **GAMMA/MAINE's** **Bruce Trull** (1985), **Rusty Smith** (1986), **JJ Johansen** (1986), **Rick Chute** (1982), and **Tony Chute** (1986) met for lunch at Fairgrounds Pub in Cornish, ME, for a mini reunion. Evidently, Rusty didn't get the black shirt memo...



### CHI/AUBURN

#### Tim Lockhart

(1977) authored *Evil Intentions Come*, a thriller published by Stark House Press involving a lawyer and his femme fatale client in her divorce case.



### ALPHA IOTA/INDIANA



**Jerome Collins** (1998) and the members of acapella group Straight No Chaser released their ninth

studio album, *Yacht on the Rocks*.



### ALPHA NU/GEORGIA TECH

Introduced as "An architectural designer and master's student from Peachtree City, GA," **Devin Lohman** (2022) appeared on two episodes of *Jeopardy!*, winning more than \$2,000.

### BETA ALPHA/UCLA

The National Aeronautics Association recognized **Lou Toth** (1978) as setting two national records for "Speed Over a Recognized Course" during flights on March 31, 2023, in his Class R (Microlight & Paramotors) two-crew aircraft built by Lou Toth Aviation Services LLC. The record was set at an average speed of 110.58 mph between Pensacola, FL, and Pascagoula, MS, and an average speed of 107.13 mph on the return trip. Toth notes that at one point, they were traveling at 169 mph. (photo above)

### BETA CHI/ALLEGHENY



**Tom Ess** (2004) was appointed executive director of Autism Services, Inc. a company dedicated to providing the highest standard of service and support for people with autism throughout Western New York for more than 30 years.





BETA ALPHA



GAMMA



ALPHA PSI

**ALPHA PSI/MARYLAND** brothers gather in Ocean City, MD, for another great weekend at the beach during their annual Theta Chi fishing trip.



ALPHA NU

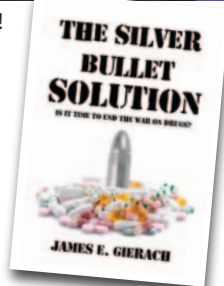
Devin Lohman (R) on the set of Jeopardy!

#### BETA RHO/ ILLINOIS WESLEYAN



**William Keller** (2002) was promoted as Chemonics' senior vice president, Nigeria country operations, and

previously served as the chief financial officer and as the director of the company's finance and compliance review team. He recently visited IWU to lead a lunch and learn session.



#### BETA ZETA/MICHIGAN STATE



**James E. Gierach** (1966) wrote *The Silver Bullet Solution*, challenging global, drug-prohibition policies and UN-sponsored drug-control treaties.



BETA RHO

ABOVE: **BETA RHO/ILLINOIS WESLEYAN** brothers gather in Jamaica for their annual trip! From left to right: **Scott Searles** (1995), **Scott Harris** (1996), **Ben Miller** (1996), **Scott Rosenberg** (1996), and **Mark Estock** (1995).

#### GAMMA RHO/FLORIDA STATE



**Andrew Rubinacci** (1991) was honored by the Hospitality Sales and Marketing Association International (HSMAI) with the Vanguard Award for Achievement in Revenue Optimization. Rubinacci is currently the executive vice president, commercial & revenue strategy of Aimbridge Hospitality and is a

seasoned hospitality veteran with over 25 years of experience. He is considered by many in the industry to be one of the foremost experts in revenue management and global distribution.



**Jonathan Bigelow** (1995) was appointed deputy chief of the Orlando Police Department.





# Ramblin' Wreck Odometer Reaches 100

BY TONY KEDZIERSKI (ALPHA NU/GEORGIA TECH 2023)



*Theta Chi CEO Mike Mayer and International Chaplain James Black present a resolution from the Grand Chapter honoring Alpha Nu's centennial anniversary.*



Last April, brothers, alumni, and guests came together at a local Atlanta brewery to celebrate 100 uninterrupted and continuous years of Alpha Nu Chapter's existence on Georgia Tech's campus. Brothers from six decades came together for a night not many will soon forget.

Just under a year before the big night, collegiate members of the chapter and Alpha Nu Building Association came together and devised a plan to throw the largest alumni event in recent memory—a celebration of the chapter's 100th anniversary. With an idea in mind, these brothers worked tirelessly in the coming months to put together a night that celebrated all the accomplishments of the chapter and its brothers over the past century. It was all-hands-on-deck to craft the perfect evening.

All the late nights and phone calls paid off. On the evening of April 22, brothers and guests gathered just south of downtown Atlanta at Best End Brewing Company, owned-and-operated by **Rob Hayes** (1994). As the doors opened, guests poured into the event space and reconnected with pledge brothers, former Marshals, Big and Little Brothers, former Dream Girls, and everyone and everything in between.

**Richard McCrea** (1972), **Kevin Murray** (1990), and **Tony Kedzierski** (2023) formally welcomed attendees and provided a rundown of the festivities. First, and most importantly on the itinerary, dinner. As brothers lined up for dinner in pledge class order, they were greeted with a classic Southern meal consisting of pulled pork, collard greens, and mac and cheese. As they

returned to their tables, brothers of all ages came together to talk about their collegiate and Fraternity experiences. With full stomachs, the brothers of Alpha Nu were then greeted by **International Chaplain Dr. James Black** and **Theta Chi CEO Mike Mayer** who presented Chapter President **Ryan Martin** (2025) with a resolution from the Grand Chapter, congratulating Alpha Nu on 100 years of continuous operation.

As the night went on, and the venue space began bursting at the seams with those who hold Alpha Nu dear to their hearts, you could hear the classic screams for "Jet!" by brothers eager to play their favorite game. Brothers spanning 55 years huddled into their circles of eight players and competed to their hearts' content, introducing rules—new and old. While games continued on one end, **Dan Shinedling** (1992) and **Jared Burns** (2025) came together to fill the dance floor with live music.

To conclude the night, brothers and guests were presented a commemorative glass, individually laser-engraved by collegiate brothers in Georgia Tech's Invention Studio, as a token of the chapter's appreciation for attending. Beyond 100 years, we had one more thing to celebrate: By the end of the event, the Alpha Nu Building Association had raised over \$60,000 for needed house improvements!

We would like to thank all the alumni who came and celebrated, those who donated, and those who continue to support the chapter. We hope to see you at future alumni events and gameday tailgates. Here's to the next 100 years!





**DELTA BETA/GEORGIA's** **Scott Keeble** (1994), his younger brother, **Adam Keeble** (1997), and his father **Allen Keeble** (1967) help move his nephew **Ben Keeble** (2025) into the Delta Beta Chapter house, making three generations of this family who have lived at 645 South Milledge Avenue.



**DELTA UPSILON/ARIZONA STATE's** **Rich Menzel** (1995) writes, "Our fall 1991 pledge class dedicated a brick at Sun Devil Stadium at ASU. It is located in Section 5 near the southwest entrance of Sun Devil Stadium."



**DELTA PSI/KANSAS' Chris Rogala** (1991) volunteers at the border between Poland and Ukraine to offer help, provide supplies, and promote awareness for the Ukrainian refugees. His GoFundMe raised more than \$20,000 and he plans to return to provide additional assistance. Rogala is currently president of Office Space Chicago, Inc.

#### DELTA BETA/GEORGIA



**Pat Wilson** (1996) was named "2023 Georgian of the Year" by *Georgia Trend* magazine.

#### DELTA KAPPA/BALL STATE

Past Grand Chapter and Foundation Chapter Board member **Brad Burk** (1991) received Ball State's Alumni Award of Achievement. He was one of 16 Ball State alumni recognized in 2023 for service and achievements. Brad currently serves as vice president of the Zionsville (IN) Town Council.



#### DELTA PI/INDIANA STATE

**Craig Maschino** (1992) was named director of Terre Haute Regional Airport.



#### EPSILON BETA/LYCOMING

**Joseph Ciccione** (1995) was elected to the Lycoming College Alumni Association Executive Board.



#### EPSILON DELTA/YOUNGSTOWN STATE

The YSU IFC renamed their IFC Service Award in memory of **William Mays** (2001) and made a posthumous presentation in recognition of his exceptional service to the IFC, YSU campus, and community. Bill was a long-time supporter of Epsilon Delta and the greater Greek community and had served on the YSU Police Department for 20 years.

#### EPSILON ETA/IUP

**Jan Garrett** (1969), a golfer for IUP, was inducted with the other members of the 1968 NAIA national championship golf team into IUP's Athletic Hall of Fame. The team won their 72-hole tournament by 30 strokes.



**Patrick Kochanowski** (1989) began his two-year term as president of the International Hearing Society in January 2023.



#### EPSILON THETA/TUFTS

Comedian **Evan Wecksell** (2001) and **Mike "The Miz" Mizanin** (Gamma Kappa/Miami (OH) 2003) were both part of *Wheel of Fortune's* WWE Week where a WWE Superstar was paired up with a superfan. The episodes aired leading up to WrestleMania. This was The Miz's second *Wheel* appearance. Although they were not paired together, the grip was exchanged.



#### EPSILON UPSILON/CENTRAL MICHIGAN



**Doug Groves** (1989) retired from the Tampa Police Department after nearly 29 years of service.

**EPSILON PHI/CENTRAL MISSOURI**  
The Warrensburg R-VI School District's Board of Education

(continued)



**EPSILON MU/EASTERN MICHIGAN's Josh Megdell** (1994) was featured in *Inside Man*, a film based on true events involving New York City's infamous Gambino crime family.







# Theta Chi's Blue Hens Celebrate Centennial

BY VICE PRESIDENT HARRY ANDERSON (2024) AND SECRETARY ZACH ATANASOV (2024)

On April 22, 2023, Alpha Xi Chapter celebrated 100 years at the University of Delaware. For months, collegiate brothers prepared for a celebration that would include pledge classes spanning across decades. This preparation included reviving our alumni network to help with fundraising as well as spreading the word about the celebration.

The celebration itself was one to remember as brothers young and old compared their Theta Chi experiences with each other. **Ryan Becker** (2024) said, "Brotherhood is something that you always know exists, but it was incredibly rewarding to see a concrete exhibition of that bond as many generations of Theta Chi men came together to celebrate the centennial of our chapter."

Sharing and laughing about different traditions the chapter accumulated through the years while reflecting on the ways in which the chapter has stayed true to Theta Chi's founding principles reminded brothers and alumni alike of the deep impact of being a part of this brotherhood. One of the notable events of the day was when **International Vice President Toby Roth** presented Chapter President **Bazel Brady** (2024) with a resolution from the Grand Chapter recognizing Alpha Xi's centennial. As he read the text, a sense of pride, accomplishment, and unity swept over the crowd. It was truly special to hear the impact we as a Fraternity have had on the lives of each other, our school, and our community.

Next, collegians and alumni separated into groups to discuss the Fraternity, current classes, jobs, and future plans. Everyone bonded over old composites from the late '90s, early 2000s, and 2010s, pointing out alumni who paved the way for the future, allowing younger members to attach a face to the names they have heard from older brothers. **Chapter Adviser Connor O'Rourke** (2015) brought a box full of historical documents,



Several Alpha Xi historical items on display during the event.

including Alpha Xi's original charter, a book full of newsletters spanning decades, and a plethora of awards that have accumulated over the years.

As the centennial celebration came to an end, brothers reflected on the day. **Jake Holzapfel** (2025) said, "It was a celebration of the tight-knit group of Resolute Men I call my brothers. Seeing past alumni who made the chapter what it is today was extremely rewarding. On top of everything, just spending a great day with my chapter just can't be beat."

**Lorenzo Degl'Innocenti** (2024) shared, "This was an incredible congregation of alumni brothers from years past, current collegiate brothers, and representatives from the International Fraternity all coming together to appreciate the history and future of our Fraternity. It was a great networking and social experience to meet brothers from years past and to start to reconnect and establish a true and supportive alumni network that we can lean on for years to come."

Our opportunity to pause and celebrate our centennial provided a clear display of how the strong ideals of our Fraternity have persisted and led to the successful chapter we are today, 100 years later.





### HOUSTON ALUMNI FOUNDERS DAY LUNCHEON

During our Founders Day luncheon, we had over 40 brothers in attendance representing 24 chapters. Our largest attendance per chapter included nine in Texas from Theta Eta/Sam Houston and for out-of-state, Delta Upsilon/Arizona State with three. Brothers dined and socialized and it was announced that **Raul Rizo-Patron** (Alpha Iota/Indiana 1990) will be spearheading the Houston Theta Chi Golf Club.



tapped **Dr. Steve Ritter** (2003) as the next superintendent of schools.

Dr. Ritter previously served as the superintendent of the Sherwood-Cass R-VIII School District.

### EPSILON OMEGA/ SACRAMENTO STATE



**Dan Freschi** (2000) authored a new professional development book called *Where Leadership Begins*, featuring many references to his Theta Chi experience.



**ZETA PSI/WESTERN ILLINOIS'**  
**Ken Caldwell** (1978), Walt Disney Studios Motion Picture's executive vice president & general sales manager, (left) travels to Djibouti to premiere *Guardians of the Galaxy Vol. 3* to servicemen and women stationed at Camp Lemonnier.

### ZETA EPSILON/ LONG BEACH STATE



**Tyler Whaley** (2006) was named Outstanding Branch Officer by the American Society of Civil Engineers San Francisco Section.



Brother Mitch (left) and Jeff (right), hold the Theta Chi flag on top of the highest mountain in Africa.

### 'Brothers' summit Mt. Kilimanjaro

In 2021, **Matt Reaves** (Delta Phi/North Texas 1981) and his two sons, **Mitch Reaves** (Chi/Auburn 2016) and Jeff Duncan, traveled to Africa to climb Mt. Kilimanjaro. After an 18-hour flight from Atlanta and two days' rest, the group began an 8-day adventure summiting the mountain. For the final climb, they left base camp at 16,100 feet after 11 p.m., and set off to reach Uhuru Peak at 19,143 feet. Unfortunately, Matt experienced back spasms at 17,300 feet and had to return to camp. Undaunted, Mitch and Jeff continued and reached the summit at 7:30 a.m. and took a photo.

### ZETA SIGMA/ WISCONSIN-RIVER FALLS



**Ryan Stovern** (2007) was honored with the Polaris Leadership Award from the Minnesota GIS/LIS Consortium.

### ETA KAPPA/JAMES MADISON



**Mike McDonald** (2005) was promoted to captain at the Montgomery Country (VA) Fire and Rescue Service.





## Kickin' the Asphalt Out of Cancer

BY JIM CARLSON (ZETA BETA/ADRIAN 1989)

The annual Pan Ohio Hope Ride raises money for the American Cancer Society's Hope Lodge in Cleveland to provide free housing for those undergoing cancer treatments. The ride encompasses 350 miles over four days, starting in Cleveland and traveling southwest to Cincinnati. One of the many teams on this 18th annual ride was "Kickin' the Asphalt Out of Cancer," a team composed of 28 riders including five Theta Chi brothers from four different chapters. Team Captain **Mark Taft** (Alpha Zeta/Rochester 1981), **Jeff Malish** (Gamma Kappa/Miami (OH) 1991), **Vince Crawford** (Zeta Beta/Adrian 1988), **Mike Kamm** (Delta Theta/Toledo 1993), and **Jim Carlson** (Zeta Beta/Adrian 1989) rode through hot weather (with two of the days biking roughly 100 miles) and spent nights at various colleges. The entire team raised over \$175,000—a new record for the event—and was awarded the Hero of Research Award. Mark Taft was the top overall fundraiser with more than \$40,000, while Jeff Malish was in the Top 5 with \$10,000. It's just another example of Theta Chi for Life and extending the Helping Hand.



(L-R): Team Captain Mark Taft (Alpha Zeta/Rochester 1981), Jeff Malish (Gamma Kappa/Miami (OH) 1991), Vince Crawford (Zeta Beta/Adrian 1988), Mike Kamm (Delta Theta/Toledo 1993), and Jim Carlson (Zeta Beta/Adrian 1989).

### ETA OMICRON/ NORTHWESTERN STATE

**Eddie Higginbotham** (2010), a past Colley Award recipient and former IHQ staff member, was recognized with Zoominfo's Difference Maker Award from leaders and peers on the onboarding, implementations, and training team.



### ETA PHI/OAKLAND



**Joseph Current** (2012) was hired as the Campus Support Center director of nursing at Dorsey College in Michigan.

### IOTA ALPHA/ UNC-WILMINGTON



**Jason Collins** (2000), a GIS manager at the Henrico County (VA) Department of Public Works, won a Special

Achievement in GIS Award for software implementation.



ETA PI/EAST STROUDSBURG brothers gather over the summer for a successful alumni golf outing.

### IOTA BETA/MISSOURI STATE



**Brett Kaprelian** (2016), morning news producer for KSDK's Today in St. Louis, was nominated for a Mid-America

EMMY Award for Morning News-cast—Markets 1-49. He previously won the award in 2022.

### IOTA PSI/RIT

**Dr. Reginald Rogers** (2021) was selected as the inaugural recipient of the Award for Excellence in

Chemical Engineering Teaching Practice from the American Institute of Chemical Engineers. This new award recognizes innovative, caring, and supportive approaches to inclusive excellence in teaching and mentoring. In his nomination, students described Rogers as the best professor they've had, someone who challenges them to learn but is always willing to help.



### KAPPA BETA/ LONG ISLAND-POST



**Steven Gerlang** (2017) was recently assigned as a trauma therapist for the Post Traumatic Stress Disorder Residential Rehabilitation Program (PRRP) at Northport VA Medical Center on Long Island. The PRRP is a 90-day voluntary intensive treatment program for combat-related PTSD.



# OUR HOUSE, YOUR HOME

BY JOE KENDALL (ZETA PI/OLD DOMINION 1969)



*The former Zeta Pi Chapter House, lovingly shared by Kyla and Nick Shawyer.*

In 1967, our then-Theta Chi Colony at Old Dominion College in Norfolk, VA, was shopping for a house to rent. We located a run-down fixer-upper in a historic but decaying area of Norfolk. The house was three stories with a basement and 2,000 square feet per floor, featuring eight bedrooms, 3 1/2 baths, five fireplaces, and the main floor was a totally open area with large pocket doors between each room. It was a perfect house for social events with bedroom space for 16+ brothers. The new owner offered the house to us for \$185 a month, if Theta Chi provided the manpower for massive home clean up and improvements. Over the next year, we cleaned, stripped wallpaper, patched holes, painted, refinished floors, and restored the home. In April 1968, we were installed as Zeta Pi Chapter. After seven years, the owner forced us out of the building because his family wanted to move in.

Fast forward to 2017, when an alumnus brother was taking a nostalgic drive, his wife said, "There is someone sitting on the porch of your old house!" He stopped, introduced himself, and asked, "Do you want to know about the history of your house?" They did, and a great friendship was born.

The residents were Kyla and Nick Shawyer and their two sons, Caelan and Jaden. Kyla was born in England and Nick was from New Zealand. After a few visits to their home, the sharing of old pictures from inside the house, and a multitude of old fraternity stories, the family suggested, "Why don't you plan another party here at our house?" Who invites a college fraternity into their home for a party and gives them the keys to their house? Kyla and Nick, that's who!

Delays caused by COVID shifted our event from a 50th to a 55th Anniversary Reunion and Founders Day Celebration held in April 2023. Nearly 125 alumni brothers, alumni sweethearts and Little Sisters, spouses, and guests attended. **Past International President Carlton Bennett (1972)** was master of ceremonies. He welcomed everyone, sincerely thanked the homeowners, and presented 35 brothers with either Silver Legion or Golden Guard certificates for 25 or 50 years of membership and loyalty to the Fraternity.

The evening was packed with renewed friendships, personal reconnections, and fond memories. Comments overheard included, "I had my wedding reception here."; "I met my future wife at one of the parties in this house."; "Working on this house next to my brothers gave me skills which changed my life."; "Discussions with my brothers around the dinner table in this room were the best part of college."; "I met the most wonderful people right here."; "I had my bachelor party and my wedding rehearsal dinner in these three rooms."; "My parents used to love to come here to parties when the school required adult chaperones at all functions."; and, "I grew up here."

If Zeta Pi Alumni Association had a sweetheart, it would have to be Kyla Shawyer. Nick would be one of our four-sport athletic brothers, if we had fraternity sports of cricket, rugby, soccer, and sailing.

Kyla and Nick, thank you for opening your home and hearts to us on our 55th anniversary and "Thanks for the Memories."



*Zeta Pi brothers return 'home' to celebrate Founders Day and their 55th anniversary.*





## Wanted: More Snowboarders

BY WARREN SCHWARTZ (THETA IOTA/UC-SANTA CRUZ 1991)

The 42nd David E. DeVol International Ski Trip returned to its starting locale, Mammoth Mountain in California. It was met with epic amounts of powder and brotherhood. Anchored by noted connoisseur of fine literature, the ageless **AI “EZ-AZ” Zale** (Gamma Theta/San Diego State 1954), our intrepid group met on February 24, 2023, for some tradition, turns, and meals.

The Gamma Theta crew originally started this event and was well attended by AI Zale and **Mark Manlove** (1969) (who hold the highest attendance records). Theta Iota/UC-Santa Cruz, who has helped uphold this annual tradition, had regulars **Herb Morgan** (1988), **Tyson Lai** (1989), **Dave Young** (1989), **Warren Schwartz** (1991), and Chef **Harris “Get Outta my Kitchen” Miller** (1988), who cooked an incredible meal for the entire crew. First-timer **Alex Alanis** (Gamma Xi/San Jose State 1990) reconnected with the Bay Area brothers and didn’t miss a beat. Rounding out the group were regulars including **International Treasurer Tom Thompson** (Rho/Illinois 1998), **Rob “Real Bourbon” Leitch** (Eta Beta/Eastern Kentucky 1996), **Andrew Voss** (Zeta Epsilon/Long Beach State 2010), and, of course, **Spencer Morgan** (Kappa Alpha/Spokane, WA 2016). **Jim Moylan** (Gamma Lambda/Denver 1969) had a last-minute cancelation but is hosting in 2024. We also hope to see **TJ Dolan** (Iota Lambda/Longwood 2006) next year as he claimed he had to make an appearance in court. We hope your arraignment went well, TJ!

The 43rd Annual Ski Trip will be February 22–25, 2024, in Steamboat Springs, CO. For information, contact Jim Moylan ([jjmoylanlaw@gmail.com](mailto:jjmoylanlaw@gmail.com)) or visit [thetachi.org/events](http://thetachi.org/events). It’s a great time to connect with brothers of all generations and keep a wonderful tradition going. P.S. Warren would like more snowboarders in 2024...we’re reaching our max on those tele guys...







We share the names of our brothers reported to the International Headquarters between April 11, 2023, and October 5, 2023, as passing to the Chapter Eternal.

## ALPHA

*Norwich*  
Walter C. Everett (1935)  
Calvin B. Hastings (1936)

## GAMMA

*Maine*  
William J. Munsey (1960)

## DELTA

*RPI*  
William G. Moller, Jr. (1953)

## EPSILON

*WPI*  
Edward E. Ahigian (1986)

## ZETA

*New Hampshire*  
Dr. Paul R. Quinney (1949)  
Richard T. Snow (1953)

## ETA

*Rhode Island*  
Michael R. Mainelli (1964)  
James L. Sullivan (1959)

## THETA

*Massachusetts*  
R. Craig DeWallace (1964)

## IOTA

*Colgate*  
Robert L. Leslie, III (1952)  
Jeffrey D. Palgut (1969)

## LAMBDA

*Cornell*  
Dr. Owen H. Griffith (1951)  
Victor H. Ham (1952)

## MU

*California*  
Jere J. Austin (1944)

## XI

*Virginia*  
Dr. Charles T. Faulkner (1965)  
August S. Raber (1949)

## OMICRON

*Richmond*  
Thomas O. Bondurant, Sr. (1949)  
Thomas O. Bondurant, Jr. (1971)  
Preston P. Purdum, Jr. (1953)  
Benjamin F. Wingfield (1956)

## PI

*Dickinson*  
Aivars Baumanis (1955)  
Elmer J. Gruver, Jr. (1959)  
Robert C. Lightburn (1974)  
William M. Steckley (1962)  
Richard S. Thatcher (1962)

## RHO

*Illinois*  
Roger L. Roth (1954)

## SIGMA

*Oregon State*  
Thomas E. Barker (1967)  
George C. Holzgang (1954)  
Philip A. Lehenbauer (1952)  
Joseph P. Mazzoni (1984)  
Dr. Norman L. Wyers (1954)

## TAU

*Florida*  
James R. Eriksen (1972)  
Kenneth E. Houpp, Jr. (1967)  
William A. Timmons (1957)  
Tore G. Wistedt (1977)

## PHI

*North Dakota State*  
Todd J. Buehler (1981)  
James M. Kleffman (1994)  
Howard W. Preckel (1951)  
Paul R. Reinhardt (1951)

## CHI

*Auburn*  
Carter O. Bridges (2011)  
B. Harry Strack, Jr. (1965)  
Joseph M. Wood, III (1998)

## PSI

*Wisconsin*  
William B. Arden, II (1977)  
William A. Stanley (1951)  
Charles L. Tonar (1948)

## OMEGA

*Penn State*  
Joseph R. Bucci (1957)  
Richard I. McLean (1968)  
James E. Noll (1987)  
G. Bickley Remmey, Jr. (1957)

## ALPHA DELTA

*Purdue*  
James E. Fisher (1993)  
John P. McCoy (1978)  
William S. Oesterle (1987)  
Michael G. Stodola (1988)

## ALPHA EPSILON

*Stanford*  
Rammy G. Rasmussen (1964)

## ALPHA ZETA

*Rochester*  
Dr. Roger W. Nelson (1960)

## ALPHA IOTA

*Indiana*  
Grover C. Bishop (1965)  
R. W. Weaver, Jr. (1967)

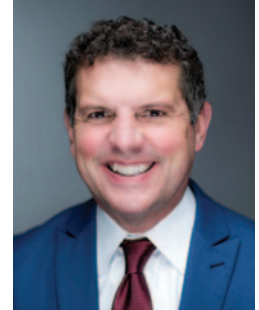
## Business and Community Leader

### WILLIAM S. OESTERLE

(ALPHA DELTA/PURDUE 1987)

September 26, 1965–May 10, 2023

Following his graduation from Purdue and Harvard Business School, Bill Oesterle was a venture capitalist when he founded Angie's List (now known as Angi), a popular home improvement review website. He later served as its executive, taking time off to run Mitch Daniel's campaign for Indiana governor. He also co-founded the Orr Fellowship to attract, shape, and retain talent in Indiana and served as a member of Purdue's board of trustees from 2005–2010, and proudly reconstructed an old ambulance into a tailgating machine: the Boilermaker Bambalance. After the sale of Angie's List, he established MakeMyMove to offer incentives for remote workers to relocate to different communities.



## ALPHA KAPPA

*West Virginia*  
Joshua L. Burselson (2012)  
Dr. E. Lee Rice (1971)

## ALPHA MU

*Iowa State*  
Dr. Garold L. A. Mallo (1956)

## ALPHA XI

*Delaware*  
Parag A. Patel (2005)  
Donald G. Schnetzer (1962)  
Walter A. Sparks, Jr. (1957)

## ALPHA OMICRON

*Washington State*  
Allen H. Quist (1963)  
David E. Roach (1951)  
Dr. Graham M. Watkins (1952)

## ALPHA PI

*Minnesota*  
Mitchell S. Brod (1983)  
David V. Deach (1959)  
Richard W. Edblom (1952)  
Wallace C. Gibson (1960)  
Russell L. Hohn (1957)  
Arnold R. Johnson (1949)  
Daniel T. Jonas (1984)  
Lt. Col. Gerald F. Sacre (1959)  
Wayne R. Sather (1954)  
Steven E. Scarborough (1962)  
James L. Scherbarth (1945)  
Anno K. von Heimburg (1956)  
Charles F. Wallander (1954)  
Dr. Wesley K. Wharton (1968)  
Nyle H. Wisted (1951)

## ALPHA RHO

*Washington*  
Michael W. Heathman (1954)  
Robert A. Loudon (1952)  
Donald E. Pollard (1961)

## ALPHA SIGMA

*Oregon*  
William A. Babcock, Jr. (1963)

## ALPHA TAU

*Ohio*  
Thomas G. Coyne, Jr. (1976)  
Raymond L. Cummins (1960)  
William A. Higgs (1949)  
Algie D. McEndree (1965)

## ALPHA UPSILON

*Nebraska*  
Dale R. Link (1952)  
Merle A. Rudebusch (1961)

## ALPHA PHI

*Alabama*  
Joseph E. Barber (1993)  
Charles J. Brady, Jr. (1936)  
James R. Burnett (1972)  
William C. Coile, Jr. (2000)  
Frank J. Delbridge, Jr. (1958)  
Richard Dipiazza (1975)  
George E. Hartwell, Jr. (1952)  
William R. Houston (1949)  
David C. London, Sr. (1931)  
Earl S. Miles, Jr. (1950)  
Gilbert G. Miller (1950)  
Dr. Stancel M. Riley, Jr. (1968)  
Cecil B. Scott, Jr. (1970)

Carl B. Smith (1959)  
Lee B. Tindell (2005)  
Thomas R. Walker (1984)

## ALPHA CHI

*Syracuse*  
Timothy J. Galus (1979)  
John E. Unbehend (1969)

## ALPHA PSI

*Maryland*  
Samuel Castaneda (2025)  
Ernest E. Eskridge, Jr. (1977)

## ALPHA OMEGA

*Lafayette*  
Hugh M. Forman (1945)  
Stephan L. Fundakowski (1977)  
Russell A. Hammond (1967)  
D. Richard Hersh (1960)  
Robert N. Kelson (1965)  
Joseph D. Swan (1944)  
Donald G. Swartz (1966)  
Donald E. Thompson, Jr. (1964)  
Jacob A. Wagner (1954)

## BETA ALPHA

*UCLA*  
Todd B. Ostling (1980)

## BETA GAMMA

*North Dakota*  
Paul A. Dahl (1955)  
Ronald C. McPhail (1966)

## BETA DELTA

*Rutgers*  
Hewitt Decker (1944)





## Theta Chi for Life

### SEAN M. DONCARLOS

(GAMMA UPSILON/BRADLEY 2003)

August 10, 1981–April 22, 2023

Sean DonCarlos earned a full scholarship to Bradley University and served as President of Gamma Upsilon Chapter. Following graduation, he served 12 years as chapter adviser and an additional six years on its Chapter Advisory Board.

At the International level, Sean served on the Foundation Chapter's Scholarship Selection Committee for seven years and had recently been named as its chairman. He consistently attended Fraternity events including Conventions, where he provided wisdom to both young and old.

Sean was a generous donor to the Foundation Chapter and, in 2018, was named as one of the Top 40 donors under 40 years of age. He is the youngest brother in our history to have given \$25,000 or more to benefit collegiate brothers. He was a recipient of the Citation of Honor, the George T. Kilavos Alumni Award, and the David E. DeVol Award.

When brothers learned Sean was diagnosed with a terminal illness, the Fraternity wanted to recognize Sean for his lifetime of service to Theta Chi. Lifetime can take on different meanings and can be varying lengths. What was constant was Brother DonCarlos' Helping Hand at the local, regional, and International levels. Thus, on February 15, 2023, Theta Chi International President Creig Andreasen and CEO Mike Mayer traveled to the St. Louis-area and presented the Earl D. Rhodes Theta Chi for Life Award to Brother DonCarlos.

After receiving the award, Sean posted on social media:

"All I will say is that I am grateful for the opportunity to have been part of our brotherhood. When the day comes, rest assured that if there is anything I can do to advance our cause from the Chapter Eternal, such opportunities will be seized with both hands. Until then, know that I draw immense strength and comfort from your love and support. Had it not been for both the Fraternity and my local friends and family, I likely would have slipped away long before now. Theta Chi for Life, Theta Chi Forever."

Amen. Thank you, Sean. You will be missed.



## Charter Member

### BRANDON J. MULINA

(IOTA DELTA/SOUTHEASTERN LOUISIANA 2004)

February 22, 1981–August 17, 2023

Brandon Mulina was a Charter Member of Iota Delta Chapter at Southeastern Louisiana University in Hammond. Following graduation, Brandon began his more than 15 years of devoted service as a respected chapter adviser, alumni corporation officer, and as a Counselor and faculty member for the International Fraternity. He was a loyal friend, a reliable brother, a role model, a mentor, and a positive voice with an infectious laugh for anyone who needed it. His ceaseless dedication to his brothers, his chapter, and his Fraternity is an example to all. His life will certainly be celebrated by

those who knew him during International Convention in August 2024 in his beloved New Orleans.

## BETA EPSILON

Montana

Jon A. Hudak (1963)  
Douglas R. Reiner (1954)  
Robert L. Rogers (1955)

## BETA ZETA

Michigan State

Donald B. Churchill (1958)

## BETA THETA

Drexel

Robert L. Eschelman (1947)

## BETA KAPPA

Hamline

Steven B. Dirks (1973)  
Walter B. Jensen (1963)  
Walter B. Kean (1954)  
Joseph D. Muchlinski (2013)

## BETA LAMBDA

Akron

Earl S. Hatfield (1964)

## BETA OMICRON

Cincinnati

Charles T. Fischer, Jr. (1948)  
Walter S. Mac Kay (1955)

## BETA PI

Monmouth

Roger L. Conant (1953)  
James I. Johnson (1957)  
Marshall H. Peterson (1964)

## BETA SIGMA

Lehigh

Robert O. Davidson (1948)  
William R. Kinkead (1954)  
John K. Sellers (1955)  
Alan W. Smolowe (1975)

## BETA TAU

Southern California

James D. Cence (1955)  
Byron F. Story (1952)  
Henry B. Waller, Jr. (1967)

## BETA PHI

Nevada

Edward F. Gomes (1950)

## BETA CHI

Allegheny

Philip M. Barnes, Jr. (1968)  
Charles R. Skinner (1984)  
George H. Zilliac (1955)

## BETA OMEGA

Susquehanna

Jeffrey A. Larose (1976)

## GAMMA BETA

Furman

Robert E. Rasmussen (1963)

## GAMMA ZETA

Oklahoma State

Lt. Delbert Clancy (1952)  
Robert H. Rooker (1949)

## GAMMA ETA

Bucknell

Wayne H. Sheffer (1950)

## GAMMA THETA

San Diego State

Richard J. Malotte (1986)  
Frank A. Weismantel (1953)

## GAMMA IOTA

Connecticut

Burton H. Anderson (1950)

## GAMMA KAPPA

Miami (OH)

Carl K. Benhase (1951)  
Dave W. Byers (1963)  
William C. Glaser (1977)  
A. Myron Hanon (1956)  
James W. Pellot (1963)  
Charles J. Schafer (1966)

## GAMMA LAMBDA

Denver

John A. Cumming (1959)

## GAMMA NU

New Mexico State

Steve T. Brown (1990)  
Oscar E. Carter, Jr. (1953)

## GAMMA XI

San Jose State

Edmund R. Attanasio, Jr. (1979)  
David L. Elam (1954)  
Christopher A. Reid (1984)  
Ronald S. Sobel (1969)

## GAMMA OMICRON

Wake Forest

John D. Ault (1972)  
Dr. Kenneth R. Braun (1954)  
Joseph H. Bridges (1965)  
William S. Britt (1977)  
Charlie B. Casper (1951)  
William P. Childers, Jr. (1956)  
Thomas J. Druitt (1976)  
Buddy R. Glance (1958)  
Kevin B. Grealey, Jr. (1982)  
Ronald C. Kelly (1954)  
Dr. James A. Maultsby (1954)  
Robert C. Medford (1960)  
John T. Mills (1960)  
Dr. Alva E. Parris (1949)  
Alexander R. Perry (1980)  
Henry R. Randall (1949)  
Rhodes T. Rumsey (1960)  
David E. Sizer (1977)  
Dr. Paul C. Steadman (1958)  
Richard B. Strosnider (1969)  
Lloyd K. Swaringen (1952)  
Capt. Ted E. Thomas (1951)  
Richard O. Wasson (1976)

**GAMMA PI**

*Buffalo*  
James A. Anderson (1963)  
Paul A. Granger (1969)  
Gary D. Nowak (1972)  
Vincent Pavis (1971)  
George H. St. George (1970)  
Lee B. Zeltzer (1969)

**GAMMA UPSILON**

*Bradley*  
Sean M. DonCarlos (2003)  
James S. Hill (1965)  
John S. Niklewicz (1992)  
Fred M. Szabados, Jr. (1954)

**GAMMA PHI**

*Nebraska Wesleyan*  
Michael R. Mahoney (1975)  
Lawrence A. Moffet (2009)  
Eric C. Peterson (1972)  
Scot A. Rutherford (1986)  
Clifford D. Sibley (1962)

**GAMMA PSI**

*Puget Sound*  
James C. Carlisle (1957)  
Keith C. Jangard (1964)

**DELTA ALPHA**

*Linfield*  
John C. Campbell (1960)  
Floyd J. McKay (1957)  
Alden R. Stephens (1951)  
Orvel D. Thorne (1966)

**DELTA BETA**

*Georgia*  
David S. Allen (1979)

**DELTA GAMMA**

*WV Wesleyan*  
W. Leroy Jones (1955)

**DELTA ZETA**

*Nebraska-Omaha*  
George L. Marling (1952)  
Jack T. Stovall (1967)

**DELTA IOTA**

*Northwestern*  
Kenneth R. Kersey (1962)

**DELTA KAPPA**

*Ball State*  
Daniel J. Csikos (1973)  
Joshua D. Ditsch (1999)

**DELTA NU**

*Vermont*  
Rollie G. White, Jr. (1964)

**DELTA XI**

*Valparaiso*  
Paul R. Blanke (1957)  
Dr. L. W. Ehrett (1954)  
Roger G. Ketelsen (1956)

**DELTA OMICRON**

*Gettysburg*  
Barry L. Colyer (1963)

**DELTA PI**

*Indiana State*  
William C.A. Maddox (2001)

**DELTA RHO**

*NC State*  
John M. Kenny (1984)

**DELTA SIGMA**

*Clarkson*  
Benigno Muniz, Jr. (1980)

**DELTA TAU**

*Kent State*  
Louis J. Papalas (1968)

**DELTA PHI**

*North Texas*  
Aloren C. Mince (1953)

**DELTA OMEGA**

*Ripon*  
John R. Owan (1959)

**EPSILON ETA**

*IUP*  
Albert A. Betts, Jr. (1977)

**EPSILON IOTA**

*East Carolina*  
Capt. Wilson T. Arnold (1962)  
Vernon R. Crumpler (1961)  
Robert W. Dowd (1969)

**EPSILON KAPPA**

*Idaho*  
Wayne T. Birch (1969)

**EPSILON OMICRON**

*Waynesburg*  
Arthur W. Swartwout (1966)

**EPSILON PI**

*Northern Illinois*  
Harold G. Gilbert (1942)

**EPSILON RHO**

*Rider*  
Ronald F. Cadic (1963)  
John J. Lazarus (1966)

**EPSILON TAU**

*Stephen F. Austin*  
Wallace C. Goodman (1967)

**EPSILON PHI**

*Central Missouri*  
Thomas J. Flick (1977)  
Guy A. Lyberger (1984)  
Michael C. McIntosh (1976)  
Dr. James T. O'Malley (1957)  
Bradley E. Thomas (1977)

**EPSILON OMEGA**

*Sacramento State*  
William R. Espenshade (1970)

**ZETA ALPHA**

*Slippery Rock*  
James E. Noll (1987)  
Ernest F. Pozzuto (1982)

**ZETA THETA**

*Troy*  
Ruben W. Dejernette (1976)  
James J. Hastings (1969)

**ZETA KAPPA**

*Ohio Northern*  
Jon R. Clevenger (1995)

**ZETA PI**

*Old Dominion*  
James C. Bright (1973)  
Lawrence D. McKinley (1967)  
George H. McQueen (1974)

**ZETA OMEGA**

*West Chester*  
Andrew J. Dougherty (2007)  
Christopher Higgins (1977)

**ETA ALPHA**

*Clemson*  
Steven H. Wright (1977)

**ETA GAMMA**

*Morehead*  
Ronald W. Mace (1983)

**ETA DELTA**

*Babson*  
Michael P. Clancy (1981)  
Donald K. Heap (1978)  
Douglas M. Hermance (1980)  
Christopher L. Sherman (1993)

**ETA OMICRON**

*Northwestern State*  
Jerry A. Kollman (1976)

**ETA XI**

*Tarkio*  
William C. Blanton (1971)

**ETA SIGMA**

*Arkansas Tech*  
Jeffrey N. Whitmer (1981)

**ETA OMEGA**

*Chico, CA*  
Randy B. Schrieffer (1993)  
Donald J. Steele (1994)

**THETA BETA**

*TCNJ*  
Charles L. Parent (1987)

**THETA EPSILON**

*Kennesaw State*  
Scott G. Perry (1987)

**THETA ETA**

*Sam Houston*  
Kelly J. Cordova (2000)

**THETA MU**

*CSU-East Bay*  
Michael A. Weavil (2000)

**IOTA DELTA**

*Southeastern Louisiana*  
Brandon J. Mulina (2004) +

**Carnation Award Recipients****SUSAN K. MAY**

June 13, 1950–June 3, 2023

**LYNNETTE W. McMAHON**

November 23, 1956–August 9, 2023

The Fraternity is deeply saddened and mourns the loss of Suzie May and Lynnette McMahon, wives of Past Foundation Chapter President Dave May and International Historian Jim McMahon. Both women were staunch supporters of their husbands and our Fraternity, often accompanying them to board meetings and other Fraternity events. Suzie met Dave while both were students at Wisconsin-River Falls. Suzie was an excellent hostess and assisted Dave with numerous Zeta Sigma Chapter Cornerstone Banquet fundraising events in their home over the years. Lynnette met Jim during their collegiate days at Long Beach State and was voted Dream Girl of Zeta Epsilon Chapter and was involved with the Daughters of the Crossed Swords. She joined Alpha Omicron Pi, was elected Chapter President, and continued her life-long membership and dedication to her sisterhood.

We thank these magnificent women for their support of their husbands and our brotherhood.



Susan K. May



Lynnette W. McMahon



Members of the Grand Chapter and Zeta Epsilon/Long Beach State brothers gather to celebrate the life of Lynnette McMahon.

**IOTA THETA**

*Central Florida*  
Alexander W. Kaplan (2011)

**IOTA RHO**

*Southern Poly*  
Jeremy R. Wilson (2013)

**BK FRATERNITY**

Wallace E. Green (1930)

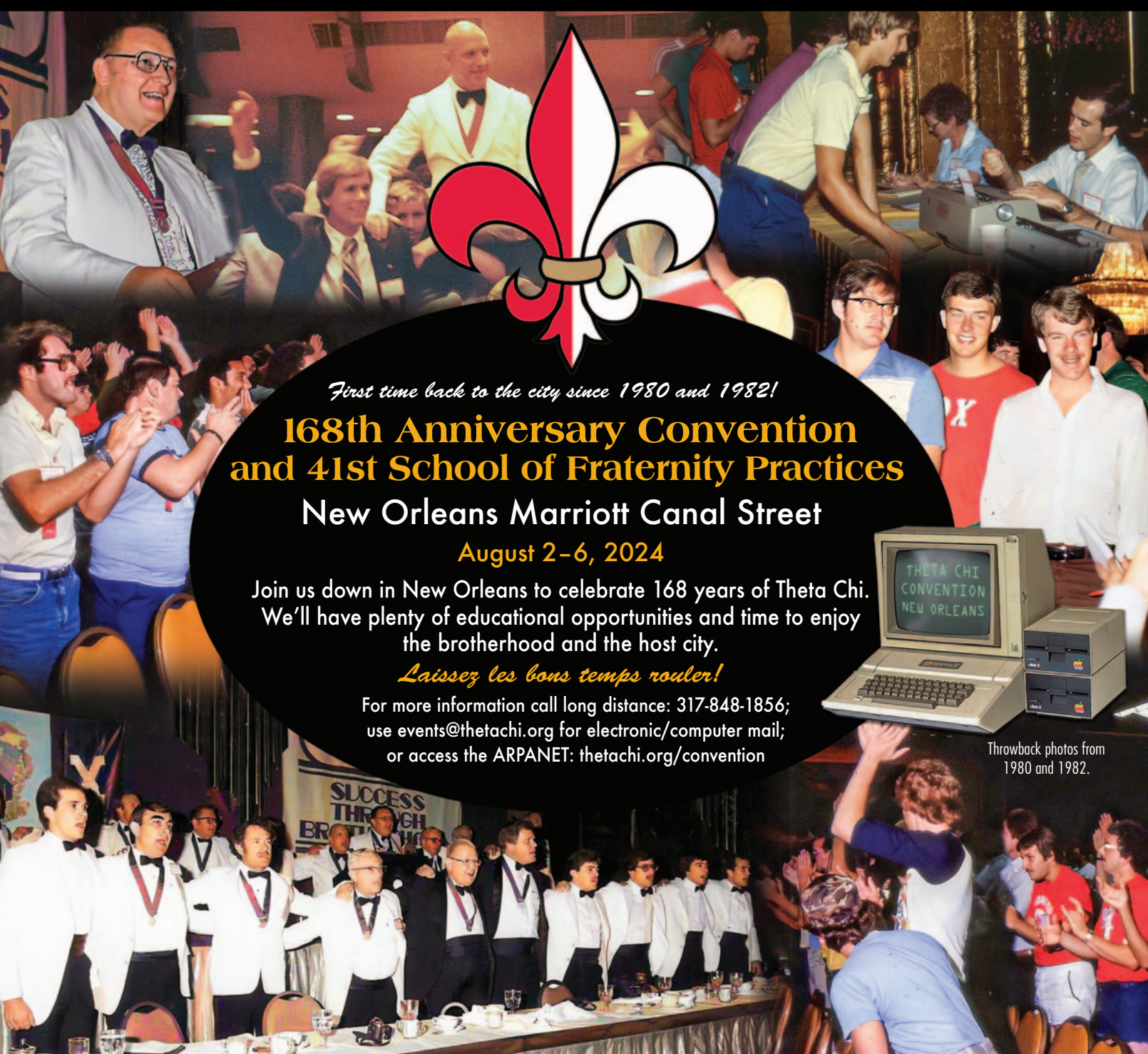
+ Past Counselor



Theta Chi Fraternity, Inc.  
PO Box 503  
Carmel, IN 46082

Non-Profit Org  
U.S. Postage  
PAID  
Permit No. 185  
Bolingbrook, IL

**PARENTS:** This magazine is sent to your son's home address; we hope you enjoy reading it before he does. If he has left college and is not living at home, please update us with his new mailing address by sending an email to [rattle@thetachi.org](mailto:rattle@thetachi.org). THANK YOU!



*First time back to the city since 1980 and 1982!*

## **168th Anniversary Convention and 41st School of Fraternity Practices**

### **New Orleans Marriott Canal Street**

**August 2-6, 2024**

Join us down in New Orleans to celebrate 168 years of Theta Chi.  
We'll have plenty of educational opportunities and time to enjoy  
the brotherhood and the host city.

*Laissez les bons temps rouler!*

For more information call long distance: 317-848-1856;  
use [events@thetachi.org](mailto:events@thetachi.org) for electronic/computer mail;  
or access the ARPANET: [thetachi.org/convention](http://thetachi.org/convention)



Throwback photos from  
1980 and 1982.